

**APPENDIX 8E. LIFE-CYCLE COST AND PAYBACK PERIOD RESULTS  
AT 3 AND 7% DISCOUNT RATES**

**TABLE OF CONTENTS**

8E.1	LIFE-CYCLE COST AND PAYBACK PERIOD RESULTS, 3% DISCOUNT RATE.....	8E-1
8E.1.1	Distribution of Life-Cycle Cost Results, 3% Discount Rate .....	8E-3
8E.1.1.1	Polyphase Motors.....	8E-3
8E.1.1.2	Capacitor-Start Induction Run Motors.....	8E-6
8E.1.1.3	Capacitor-Start Capacitor Run Motors .....	8E-10
8E.1.2	Distribution of Payback Period Results, 3% Discount Rate .....	8E-14
8E.1.2.1	Polyphase Motors.....	8E-14
8E.1.2.2	Capacitor-Start Induction Run Motors.....	8E-17
8E.1.2.3	Capacitor-Start Capacitor Run Motors .....	8E-21
8E.2	LIFE-CYCLE COST AND PAYBACK PERIOD RESULTS, 7% DISCOUNT RATE.....	8E-25
8E.2.1	Distribution of Life-Cycle Cost Results, 7% Discount Rate .....	8E-27
8E.2.1.1	Polyphase Motors.....	8E-27
8E.2.1.2	Capacitor-Start Induction Run Motors.....	8E-30
8E.2.1.3	Capacitor-Start Capacitor Run Motors .....	8E-34
8E.2.2	Distribution of Payback Period Results, 7% Discount Rate .....	8E-38
8E.2.2.1	Polyphase Motors.....	8E-38
8E.2.2.2	Capacitor-Start Induction Run Motors.....	8E-41
8E.2.2.3	Capacitor-Start Capacitor Run Motors .....	8E-45

**TABLE OF TABLES**

Table 8E.1.1	Polyphase Motors: Life-Cycle Cost and Payback Period Results, 3% Discount Rate.....	8E-1
Table 8E.1.2	Capacitor-Start Induction Motors: Life-Cycle Cost and Payback Period Results, 3% Discount Rate.....	8E-1
Table 8E.1.3	Capacitor-Start Capacitor Run Motors: Life-Cycle Cost and Payback Period Results, 3% Discount Rate .....	8E-2
Table 8E.2.1	Polyphase Motors: Life-Cycle Cost and Payback Period Results, 7% Discount Rate.....	8E-25
Table 8E.2.2	Capacitor-Start Induction Motors: Life-Cycle Cost and Payback Period Results, 7% Discount Rate.....	8E-25
Table 8E.2.3	Capacitor-Start Capacitor Run Motors: Life-Cycle Cost and Payback Period Results, 7% Discount Rate .....	8E-26

## TABLE OF FIGURES

Figure 8E.1.1	Polyphase Motors: Distribution of Life-Cycle Cost Impacts for Efficiency Level 1, 3% Discount Rate.....	8E-3
Figure 8E.1.2	Polyphase Motors: Distribution of Life-Cycle Cost Impacts for Efficiency Level 2, 3% Discount Rate.....	8E-3
Figure 8E.1.3	Polyphase Motors: Distribution of Life-Cycle Cost Impacts for Efficiency Level 3, 3% Discount Rate.....	8E-4
Figure 8E.1.4	Polyphase Motors: Distribution of Life-Cycle Cost Impacts for Efficiency Level 4, 3% Discount Rate.....	8E-4
Figure 8E.1.5	Polyphase Motors: Distribution of Life-Cycle Cost Impacts for Efficiency Level 5, 3% Discount Rate.....	8E-5
Figure 8E.1.6	Polyphase Motors: Distribution of Life-Cycle Cost Impacts for Efficiency Level 6, 3% Discount Rate.....	8E-5
Figure 8E.1.7	Polyphase Motors: Distribution of Life-Cycle Cost Impacts for Efficiency Level 7, 3% Discount Rate.....	8E-6
Figure 8E.1.8	Capacitor-Start Induction Run Motors: Distribution of Life-Cycle Cost Impacts for Efficiency Level 1, 3% Discount Rate .....	8E-6
Figure 8E.1.9	Capacitor-Start Induction Run Motors: Distribution of Life-Cycle Cost Impacts for Efficiency Level 2, 3% Discount Rate .....	8E-7
Figure 8E.1.10	Capacitor-Start Induction Run Motors: Distribution of Life-Cycle Cost Impacts for Efficiency Level 3, 3% Discount Rate .....	8E-7
Figure 8E.1.11	Capacitor-Start Induction Run Motors: Distribution of Life-Cycle Cost Impacts for Efficiency Level 4, 3% Discount Rate .....	8E-8
Figure 8E.1.12	Capacitor-Start Induction Run Motors: Distribution of Life-Cycle Cost Impacts for Efficiency Level 5, 3% Discount Rate .....	8E-8
Figure 8E.1.13	Capacitor-Start Induction Run Motors: Distribution of Life-Cycle Cost Impacts for Efficiency Level 6, 3% Discount Rate .....	8E-9
Figure 8E.1.14	Capacitor-Start Induction Run Motors: Distribution of Life-Cycle Cost Impacts for Efficiency Level 7 .....	8E-9
Figure 8E.1.15	Capacitor-Start Capacitor Run Motors: Distribution of Life-Cycle Cost Impacts for Efficiency Level 1, 3% Discount Rate .....	8E-10
Figure 8E.1.16	Capacitor-Start Capacitor Run Motors: Distribution of Life-Cycle Cost Impacts for Efficiency Level 2, 3% Discount Rate .....	8E-10
Figure 8E.1.17	Capacitor-Start Capacitor Run Motors: Distribution of Life-Cycle Cost Impacts for Efficiency Level 3, 3% Discount Rate .....	8E-11
Figure 8E.1.18	Capacitor-Start Capacitor Run Motors: Distribution of Life-Cycle Cost Impacts for Efficiency Level 4, 3% Discount Rate .....	8E-11
Figure 8E.1.19	Capacitor-Start Capacitor Run Motors: Distribution of Life-Cycle Cost Impacts for Efficiency Level 5, 3% Discount Rate .....	8E-12
Figure 8E.1.20	Capacitor-Start Capacitor Run Motors: Distribution of Life-Cycle Cost Impacts for Efficiency Level 6, 3% Discount Rate .....	8E-12
Figure 8E.1.21	Capacitor-Start Capacitor Run Motors: Distribution of Life-Cycle Cost Impacts for Efficiency Level 7, 3% Discount Rate .....	8E-13
Figure 8E.1.22	Capacitor-Start Capacitor Run Motors: Distribution of Life-Cycle Cost Impacts for Efficiency Level 8, 3% Discount Rate .....	8E-13

Figure 8E.1.23	Polyphase Motors: Distribution of Payback Period Impacts for Efficiency Level 1, 3% Discount Rate.....	8E-14
Figure 8E.1.24	Polyphase Motors: Distribution of Payback Period Impacts for Efficiency Level 2, 3% Discount Rate.....	8E-14
Figure 8E.1.25	Polyphase Motors: Distribution of Payback Period Impacts for Efficiency Level 3, 3% Discount Rate.....	8E-15
Figure 8E.1.26	Polyphase Motors: Distribution of Payback Period Impacts for Efficiency Level 4, 3% Discount Rate.....	8E-15
Figure 8E.1.27	Polyphase Motors: Distribution of Payback Period Impacts for Efficiency Level 5, 3% Discount Rate.....	8E-16
Figure 8E.1.28	Polyphase Motors: Distribution of Payback Period Impacts for Efficiency Level 6, 3% Discount Rate.....	8E-16
Figure 8E.1.29	Polyphase Motors: Distribution of Payback Period Impacts for Efficiency Level 7, 3% Discount Rate.....	8E-17
Figure 8E.1.30	Capacitor-Start Induction Run Motors: Distribution of Payback Period Impacts for Efficiency Level 1, 3% Discount Rate .....	8E-17
Figure 8E.1.31	Capacitor-Start Induction Run Motors: Distribution of Payback Period Impacts for Efficiency Level 2, 3% Discount Rate .....	8E-18
Figure 8E.1.32	Capacitor-Start Induction Run Motors: Distribution of Payback Period Impacts for Efficiency Level 3, 3% Discount Rate .....	8E-18
Figure 8E.1.33	Capacitor-Start Induction Run Motors: Distribution of Payback Period Impacts for Efficiency Level 4, 3% Discount Rate .....	8E-19
Figure 8E.1.34	Capacitor-Start Induction Run Motors: Distribution of Payback Period Impacts for Efficiency Level 5, 3% Discount Rate .....	8E-19
Figure 8E.1.35	Capacitor-Start Induction Run Motors: Distribution of Payback Period Impacts for Efficiency Level 6, 3% Discount Rate .....	8E-20
Figure 8E.1.36	Capacitor-Start Induction Run Motors: Distribution of Payback Period Impacts for Efficiency Level 7, 3% Discount Rate .....	8E-20
Figure 8E.1.37	Capacitor-Start Capacitor Run Motors: Distribution of Payback Period Impacts for Efficiency Level 1, 3% Discount Rate .....	8E-21
Figure 8E.1.38	Capacitor-Start Capacitor Run Motors: Distribution of Payback Period Impacts for Efficiency Level 2, 3% Discount Rate .....	8E-21
Figure 8E.1.39	Capacitor-Start Capacitor Run Motors: Distribution of Payback Period Impacts for Efficiency Level 3, 3% Discount Rate .....	8E-22
Figure 8E.1.40	Capacitor-Start Capacitor Run Motors: Distribution of Payback Period Impacts for Efficiency Level 4, 3% Discount Rate .....	8E-22
Figure 8E.1.41	Capacitor-Start Capacitor Run Motors: Distribution of Payback Period Impacts for Efficiency Level 5, 3% Discount Rate .....	8E-23
Figure 8E.1.42	Capacitor-Start Capacitor Run Motors: Distribution of Payback Period Impacts for Efficiency Level 6, 3% Discount Rate .....	8E-23
Figure 8E.1.43	Capacitor-Start Capacitor Run Motors: Distribution of Payback Period Impacts for Efficiency Level 7, 3% Discount Rate .....	8E-24
Figure 8E.1.44	Capacitor-Start Capacitor Run Motors: Distribution of Payback Period Impacts for Efficiency Level 8, 3% Discount Rate .....	8E-24
Figure 8E.2.1	Polyphase Motors: Distribution of Life-Cycle Cost Impacts for Efficiency Level 1, 7% Discount Rate.....	8E-27

Figure 8E.2.2	Polyphase Motors: Distribution of Life-Cycle Cost Impacts for Efficiency Level 2, 7% Discount Rate.....	8E-27
Figure 8E.2.3	Polyphase Motors: Distribution of Life-Cycle Cost Impacts for Efficiency Level 3, 7% Discount Rate.....	8E-28
Figure 8E.2.4	Polyphase Motors: Distribution of Life-Cycle Cost Impacts for Efficiency Level 4, 7% Discount Rate.....	8E-28
Figure 8E.2.5	Polyphase Motors: Distribution of Life-Cycle Cost Impacts for Efficiency Level 5, 7% Discount Rate.....	8E-29
Figure 8E.2.6	Polyphase Motors: Distribution of Life-Cycle Cost Impacts for Efficiency Level 6, 7% Discount Rate.....	8E-29
Figure 8E.2.7	Polyphase Motors: Distribution of Life-Cycle Cost Impacts for Efficiency Level 7, 7% Discount Rate.....	8E-30
Figure 8E.2.8	Capacitor-Start Induction Run Motors: Distribution of Life-Cycle Cost Impacts for Efficiency Level 1, 7% Discount Rate .....	8E-30
Figure 8E.2.9	Capacitor-Start Induction Run Motors: Distribution of Life-Cycle Cost Impacts for Efficiency Level 2, 7% Discount Rate .....	8E-31
Figure 8E.2.10	Capacitor-Start Induction Run Motors: Distribution of Life-Cycle Cost Impacts for Efficiency Level 3, 7% Discount Rate .....	8E-31
Figure 8E.2.11	Capacitor-Start Induction Run Motors: Distribution of Life-Cycle Cost Impacts for Efficiency Level 4, 7% Discount Rate .....	8E-32
Figure 8E.2.12	Capacitor-Start Induction Run Motors: Distribution of Life-Cycle Cost Impacts for Efficiency Level 5, 7% Discount Rate .....	8E-32
Figure 8E.2.13	Capacitor-Start Induction Run Motors: Distribution of Life-Cycle Cost Impacts for Efficiency Level 6, 7% Discount Rate .....	8E-33
Figure 8E.2.14	Capacitor-Start Induction Run Motors: Distribution of Life-Cycle Cost Impacts for Efficiency Level 7 .....	8E-33
Figure 8E.2.15	Capacitor-Start Capacitor Run Motors: Distribution of Life-Cycle Cost Impacts for Efficiency Level 1, 7% Discount Rate .....	8E-34
Figure 8E.2.16	Capacitor-Start Capacitor Run Motors: Distribution of Life-Cycle Cost Impacts for Efficiency Level 2, 7% Discount Rate .....	8E-34
Figure 8E.2.17	Capacitor-Start Capacitor Run Motors: Distribution of Life-Cycle Cost Impacts for Efficiency Level 3, 7% Discount Rate .....	8E-35
Figure 8E.2.18	Capacitor-Start Capacitor Run Motors: Distribution of Life-Cycle Cost Impacts for Efficiency Level 4, 7% Discount Rate .....	8E-35
Figure 8E.2.19	Capacitor-Start Capacitor Run Motors: Distribution of Life-Cycle Cost Impacts for Efficiency Level 5, 7% Discount Rate .....	8E-36
Figure 8E.2.20	Capacitor-Start Capacitor Run Motors: Distribution of Life-Cycle Cost Impacts for Efficiency Level 6, 7% Discount Rate .....	8E-36
Figure 8E.2.21	Capacitor-Start Capacitor Run Motors: Distribution of Life-Cycle Cost Impacts for Efficiency Level 7, 7% Discount Rate .....	8E-37
Figure 8E.2.22	Capacitor-Start Capacitor Run Motors: Distribution of Life-Cycle Cost Impacts for Efficiency Level 8, 7% Discount Rate .....	8E-37
Figure 8E.2.23	Polyphase Motors: Distribution of Payback Period Impacts for Efficiency Level 1, 7% Discount Rate.....	8E-38
Figure 8E.2.24	Polyphase Motors: Distribution of Payback Period Impacts for Efficiency Level 2, 7% Discount Rate.....	8E-38

Figure 8E.2.25	Polyphase Motors: Distribution of Payback Period Impacts for Efficiency Level 3, 7% Discount Rate.....	8E-39
Figure 8E.2.26	Polyphase Motors: Distribution of Payback Period Impacts for Efficiency Level 4, 7% Discount Rate.....	8E-39
Figure 8E.2.27	Polyphase Motors: Distribution of Payback Period Impacts for Efficiency Level 5, 7% Discount Rate.....	8E-40
Figure 8E.2.28	Polyphase Motors: Distribution of Payback Period Impacts for Efficiency Level 6, 7% Discount Rate.....	8E-40
Figure 8E.2.29	Polyphase Motors: Distribution of Payback Period Impacts for Efficiency Level 7, 7% Discount Rate.....	8E-41
Figure 8E.2.30	Capacitor-Start Induction Run Motors: Distribution of Payback Period Impacts for Efficiency Level 1, 7% Discount Rate .....	8E-41
Figure 8E.2.31	Capacitor-Start Induction Run Motors: Distribution of Payback Period Impacts for Efficiency Level 2, 7% Discount Rate .....	8E-42
Figure 8E.2.32	Capacitor-Start Induction Run Motors: Distribution of Payback Period Impacts for Efficiency Level 3, 7% Discount Rate .....	8E-42
Figure 8E.2.33	Capacitor-Start Induction Run Motors: Distribution of Payback Period Impacts for Efficiency Level 4, 7% Discount Rate .....	8E-43
Figure 8E.2.34	Capacitor-Start Induction Run Motors: Distribution of Payback Period Impacts for Efficiency Level 5, 7% Discount Rate .....	8E-43
Figure 8E.2.35	Capacitor-Start Induction Run Motors: Distribution of Payback Period Impacts for Efficiency Level 6, 7% Discount Rate .....	8E-44
Figure 8E.2.36	Capacitor-Start Induction Run Motors: Distribution of Payback Period Impacts for Efficiency Level 7, 7% Discount Rate .....	8E-44
Figure 8E.2.37	Capacitor-Start Capacitor Run Motors: Distribution of Payback Period Impacts for Efficiency Level 1, 7% Discount Rate .....	8E-45
Figure 8E.2.38	Capacitor-Start Capacitor Run Motors: Distribution of Payback Period Impacts for Efficiency Level 2, 7% Discount Rate .....	8E-45
Figure 8E.2.39	Capacitor-Start Capacitor Run Motors: Distribution of Payback Period Impacts for Efficiency Level 3, 7% Discount Rate .....	8E-46
Figure 8E.2.40	Capacitor-Start Capacitor Run Motors: Distribution of Payback Period Impacts for Efficiency Level 4, 7% Discount Rate .....	8E-46
Figure 8E.2.41	Capacitor-Start Capacitor Run Motors: Distribution of Payback Period Impacts for Efficiency Level 5, 7% Discount Rate .....	8E-47
Figure 8E.2.42	Capacitor-Start Capacitor Run Motors: Distribution of Payback Period Impacts for Efficiency Level 6, 7% Discount Rate .....	8E-47
Figure 8E.2.43	Capacitor-Start Capacitor Run Motors: Distribution of Payback Period Impacts for Efficiency Level 7, 7% Discount Rate .....	8E-48
Figure 8E.2.44	Capacitor-Start Capacitor Run Motors: Distribution of Payback Period Impacts for Efficiency Level 8, 7% Discount Rate .....	8E-48

**APPENDIX 8E. LIFE-CYCLE COST AND PAYBACK PERIOD RESULTS  
AT 3 AND 7% DISCOUNT RATES**

**8E.1 LIFE-CYCLE COST AND PAYBACK PERIOD RESULTS, 3% DISCOUNT RATE**

**Table 8E.1.1 Polyphase Motors: Life-Cycle Cost and Payback Period Results, 3% Discount Rate**

Energy Efficiency Level	Efficiency (%)	Life-Cycle Cost				Life-Cycle Cost Savings			Payback Period (years)	
		Average Installed Price (\$)	Average Annual Energy Use (KWh)	Average Annual Operating Cost (\$)	Average Cost (\$)	Average Savings (\$)	Consumers with		Average	Median
							Net Cost (%)	Net Benefit (%)		
Baseline	77.15	512	1735	132	1380					
1	78.70	524	1706	130	1378	2	57.4	42.6	33.3	10.6
2	80.00	531	1671	127	1367	13	44.9	55.1	22.7	7.3
3	81.60	543	1618	123	1352	29	40.5	59.5	19.9	6.3
4	82.50	551	1602	122	1352	28	43.7	56.3	22.2	7.1
5	85.20	645	1524	116	1406	-26	66.4	33.6	47.4	14.0
6	86.70	699	1504	114	1451	-71	78.0	22.0	61.2	19.2
7	88.30	1465	1469	112	2200	-820	97.1	2.9	262.0	56.6

**Table 8E.1.2 Capacitor-Start Induction Motors: Life-Cycle Cost and Payback Period Results, 3% Discount Rate**

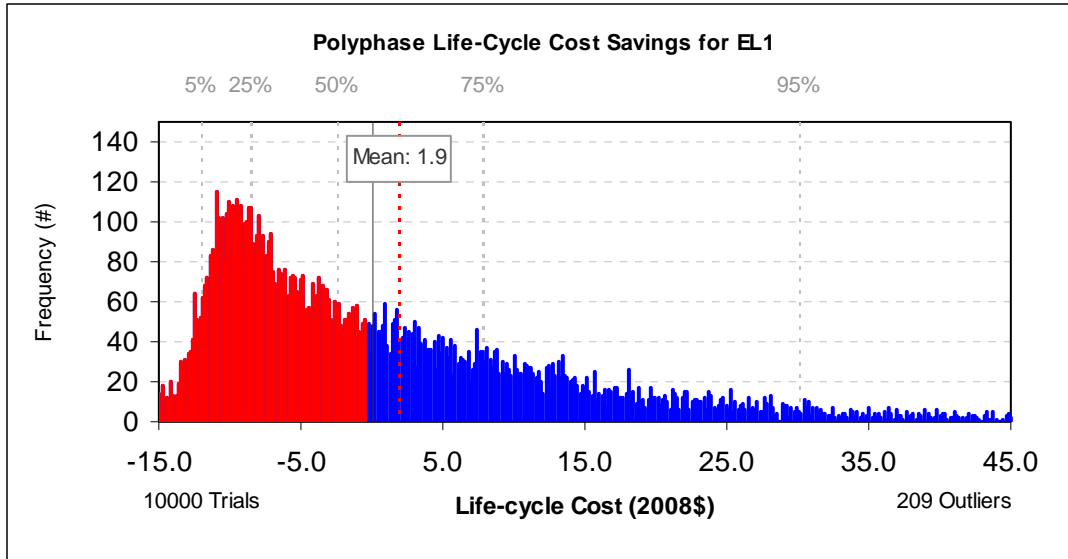
Energy Efficiency Level	Efficiency (%)	Life-Cycle Cost				Life-Cycle Cost Savings			Payback Period (years)	
		Average Installed Price (\$)	Average Annual Energy Use (KWh)	Average Annual Operating Cost (\$)	Average Cost (\$)	Average Savings (\$)	Consumers with		Average	Median
							Net Cost (%)	Net Benefit (%)		
CSCR Baseline	65.53	502	1075	81	916					
Baseline	57.70	491	1292	97	989					
1	59.50	500	1240	93	978	11	35.8	64.2	13.8	4.1
2	62.00	505	1178	88	960	29	29.4	70.6	10.3	3.1
3	64.20	508	1123	84	941	48	24.1	75.9	8.3	2.5
4	68.50	526	1033	77	924	66	29.6	70.4	10.9	3.3
5	71.20	544	983	74	923	66	35.7	64.3	13.7	4.2
6	73.00	589	953	72	956	33	48.6	51.4	23.2	6.5
7	77.00	991	888	67	1332	-343	59.9	40.1	100.5	11.2

**Table 8E.1.3 Capacitor-Start Capacitor Run Motors: Life-Cycle Cost and Payback Period Results, 3% Discount Rate**

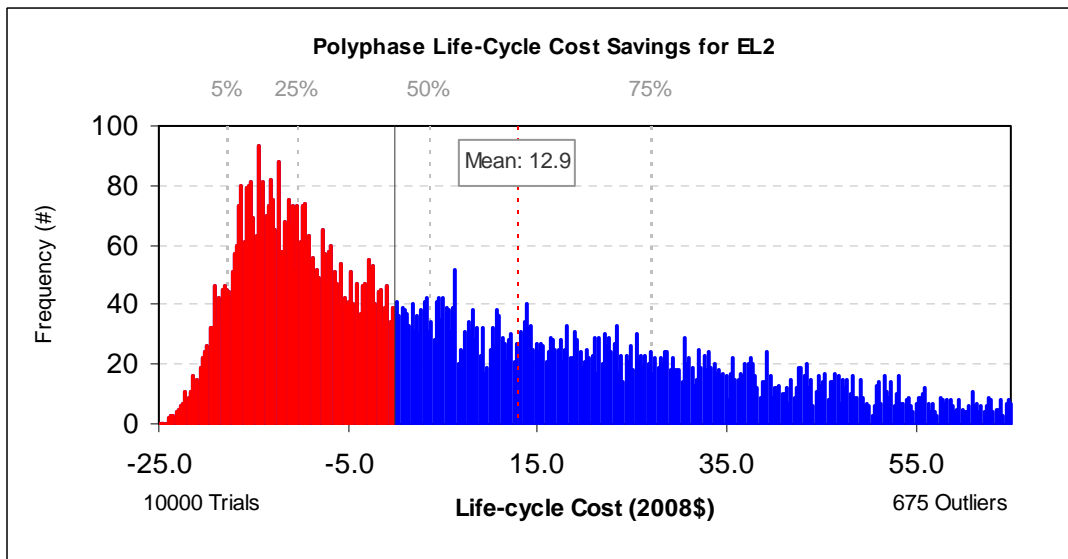
Energy Efficiency Level	Efficiency (%)	Life-Cycle Cost				Life-Cycle Cost Savings			Payback Period (years)	
		Average Installed Price (\$)	Average Annual Energy Use (KWh)	Average Annual Operating Cost (\$)	Average Cost (\$)	Average Savings (\$)	Consumers with		Average	Median
							Net Cost (%)	Net Benefit (%)		
CSIR Baseline	63.38	544	1734	130	1213					
Baseline	71.00	542	1469	110	1107					
1	74.30	552	1407	106	1092	15	30.4	69.6	12.8	4.0
2	78.30	581	1294	97	1076	31	39.5	60.5	17.6	5.2
3	80.30	591	1249	94	1069	38	40.5	59.5	17.9	5.3
4	81.60	607	1255	94	1085	23	48.4	51.7	23.5	7.3
5	82.70	620	1242	93	1093	14	53.3	46.7	26.8	8.3
6	83.70	669	1234	93	1139	-31	67.7	32.3	43.4	12.1
7	85.40	688	1191	89	1141	-33	68.0	32.0	41.8	11.8
8	87.30	1515	1158	87	1956	-848	98.5	1.5	247.1	50.5

## 8E.1.1 Distribution of Life-Cycle Cost Results, 3% Discount Rate

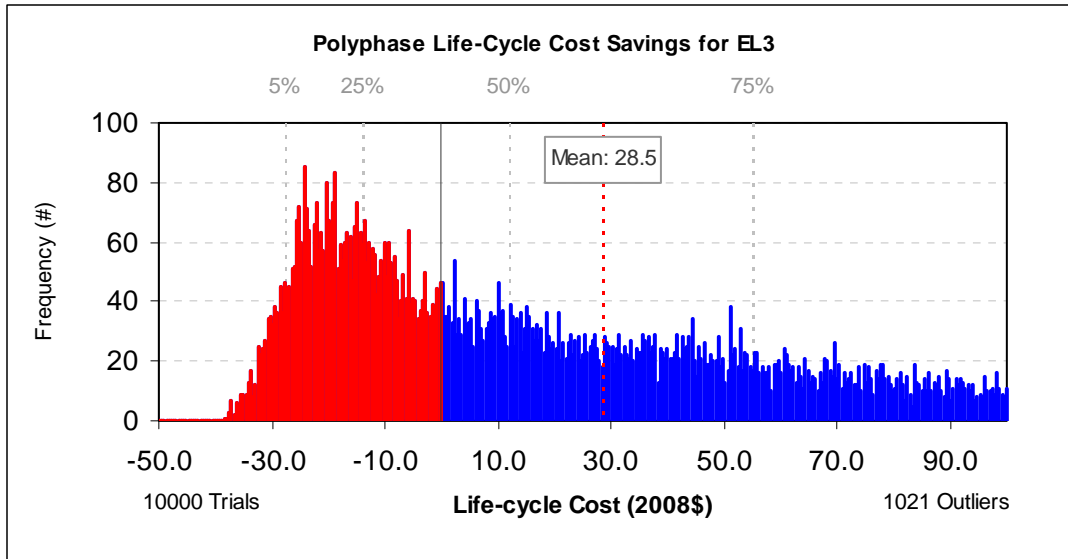
### 8E.1.1.1 Polyphase Motors



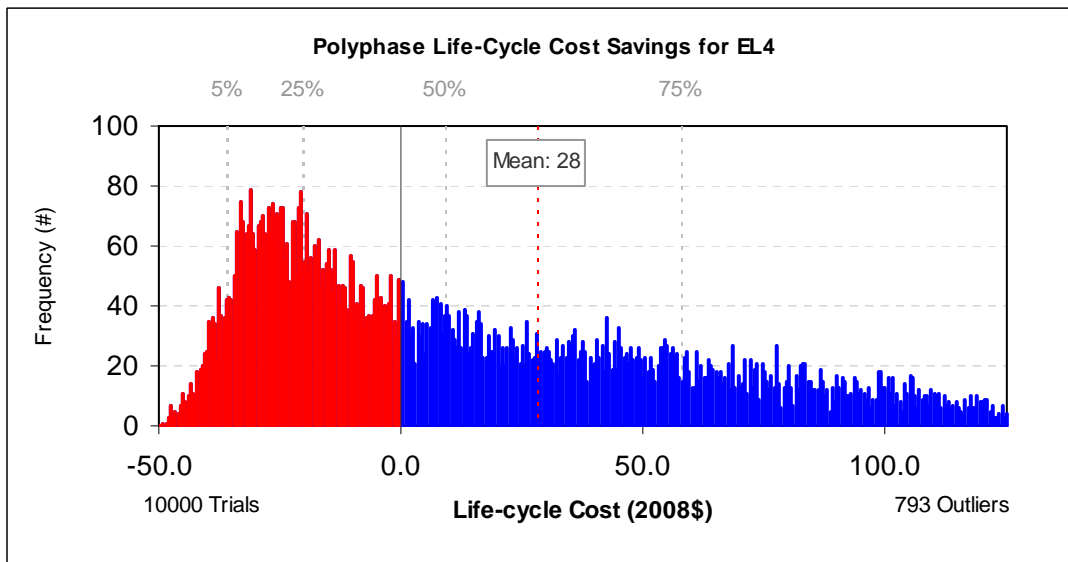
**Figure 8E.1.1 Polyphase Motors: Distribution of Life-Cycle Cost Impacts for Efficiency Level 1, 3% Discount Rate**



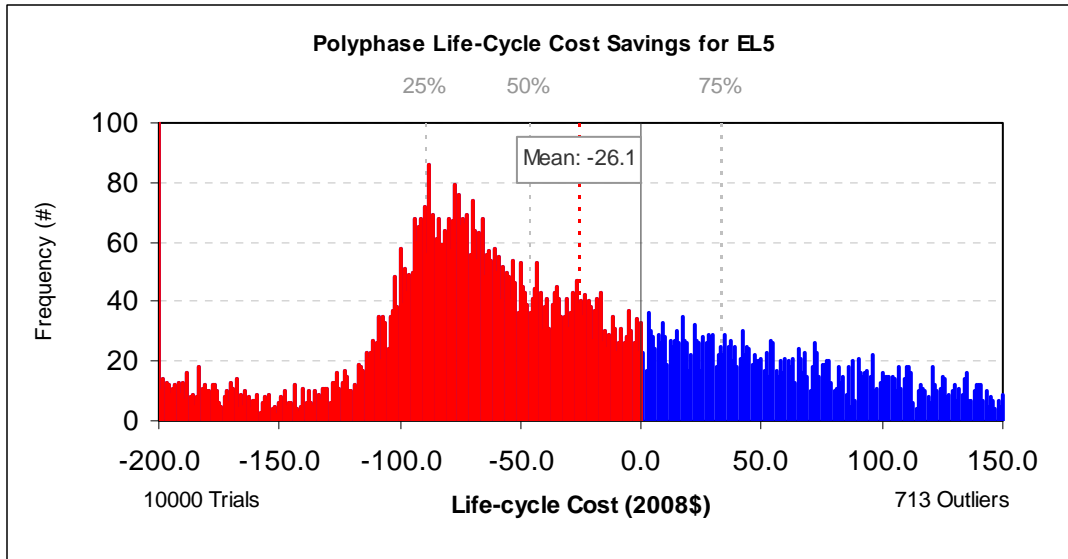
**Figure 8E.1.2 Polyphase Motors: Distribution of Life-Cycle Cost Impacts for Efficiency Level 2, 3% Discount Rate**



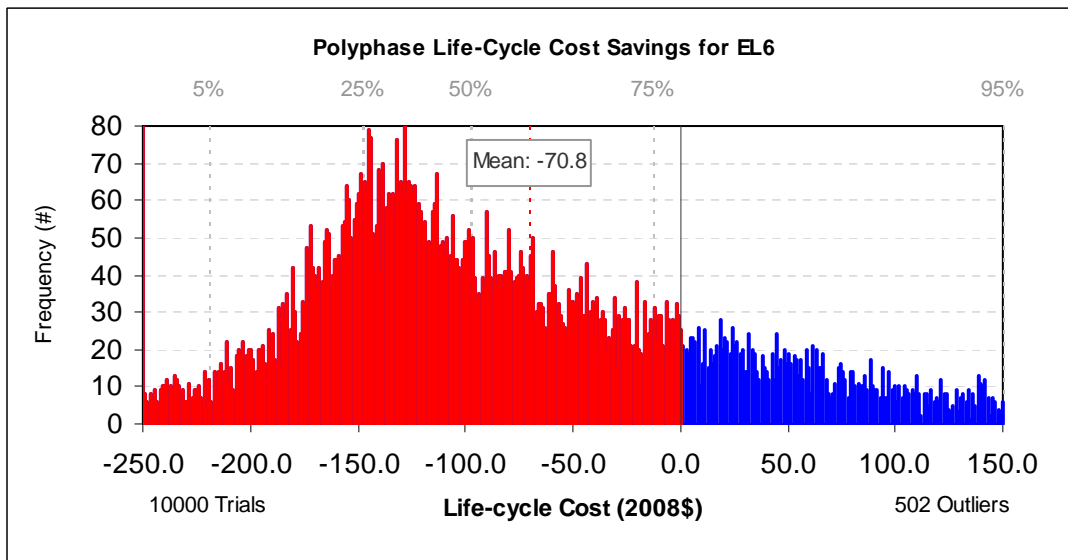
**Figure 8E.1.3 Polyphase Motors: Distribution of Life-Cycle Cost Impacts for Efficiency Level 3, 3% Discount Rate**



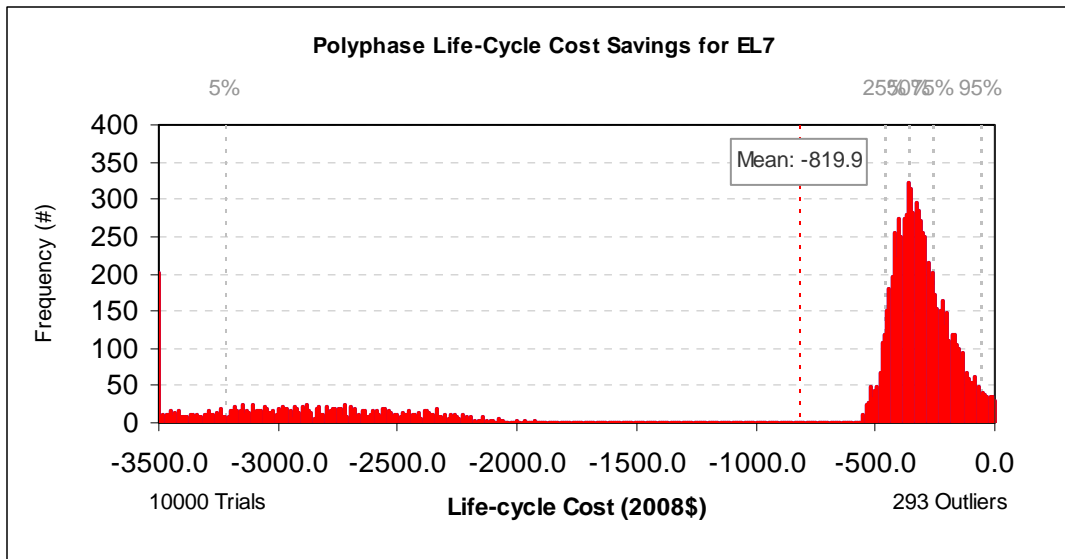
**Figure 8E.1.4 Polyphase Motors: Distribution of Life-Cycle Cost Impacts for Efficiency Level 4, 3% Discount Rate**



**Figure 8E.1.5 Polyphase Motors: Distribution of Life-Cycle Cost Impacts for Efficiency Level 5, 3% Discount Rate**

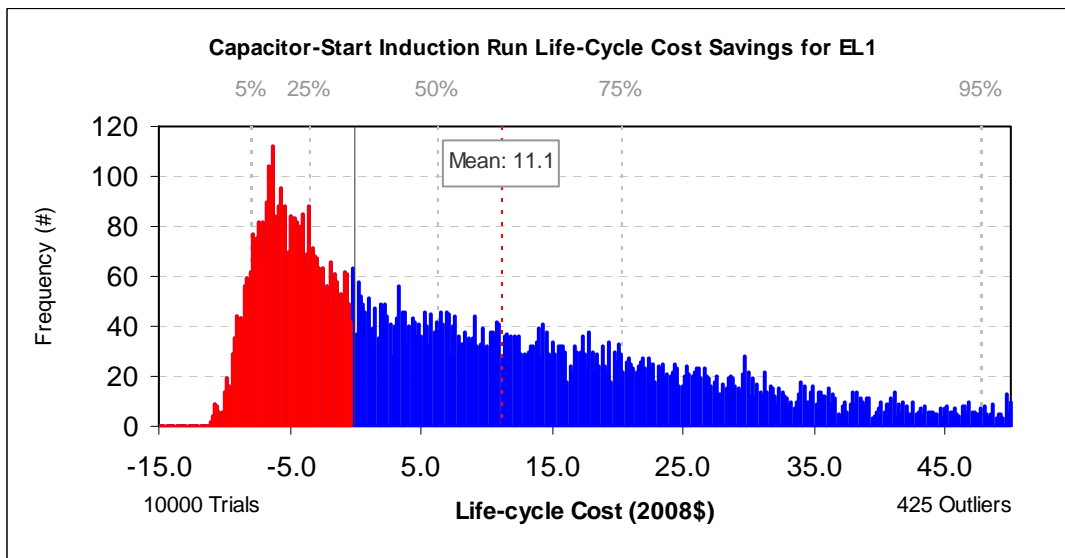


**Figure 8E.1.6 Polyphase Motors: Distribution of Life-Cycle Cost Impacts for Efficiency Level 6, 3% Discount Rate**

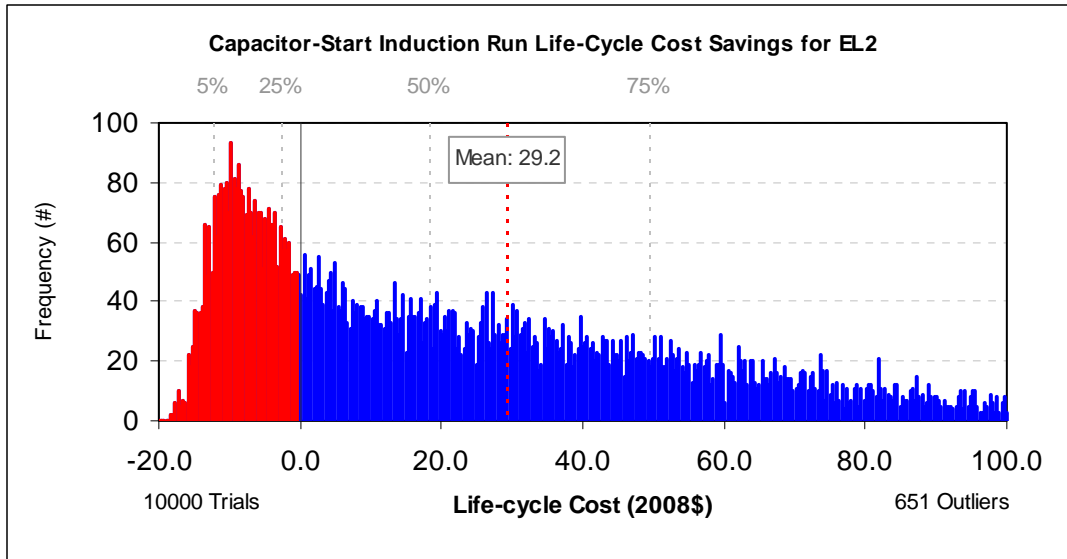


**Figure 8E.1.7 Polyphase Motors: Distribution of Life-Cycle Cost Impacts for Efficiency Level 7, 3% Discount Rate**

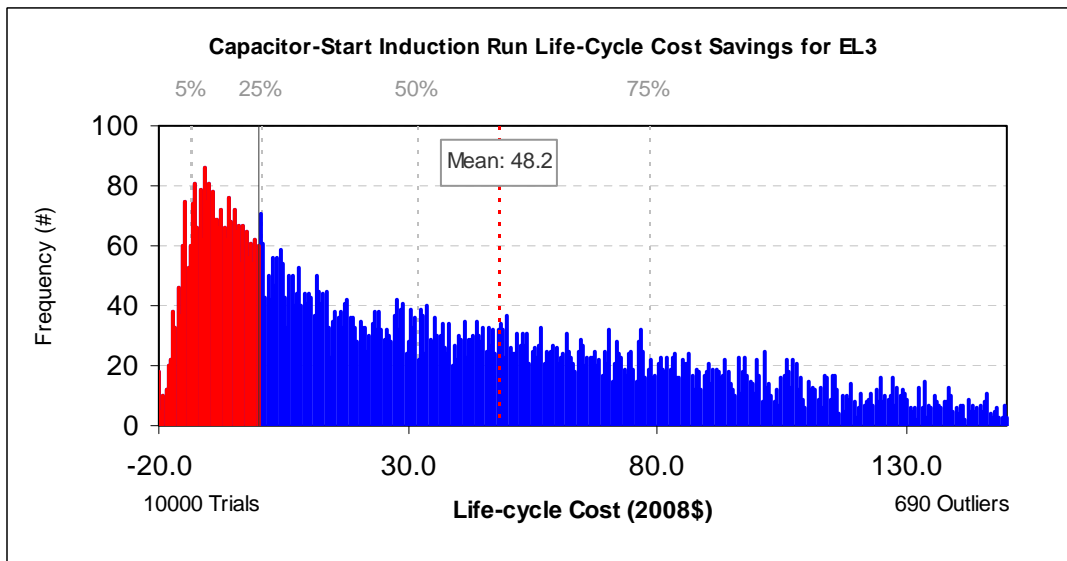
### 8E.1.1.2 Capacitor-Start Induction Run Motors



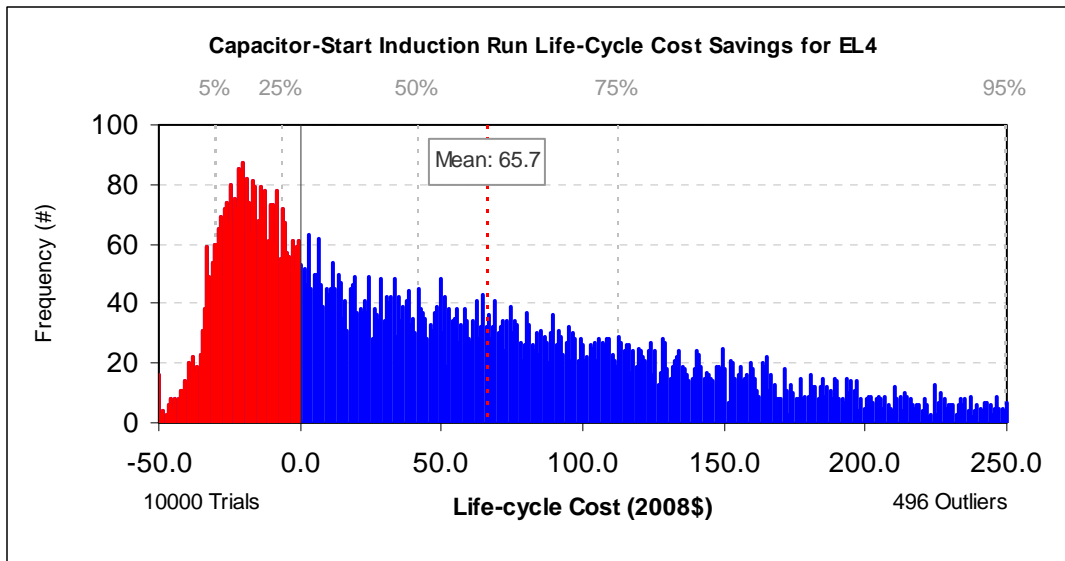
**Figure 8E.1.8 Capacitor-Start Induction Run Motors: Distribution of Life-Cycle Cost Impacts for Efficiency Level 1, 3% Discount Rate**



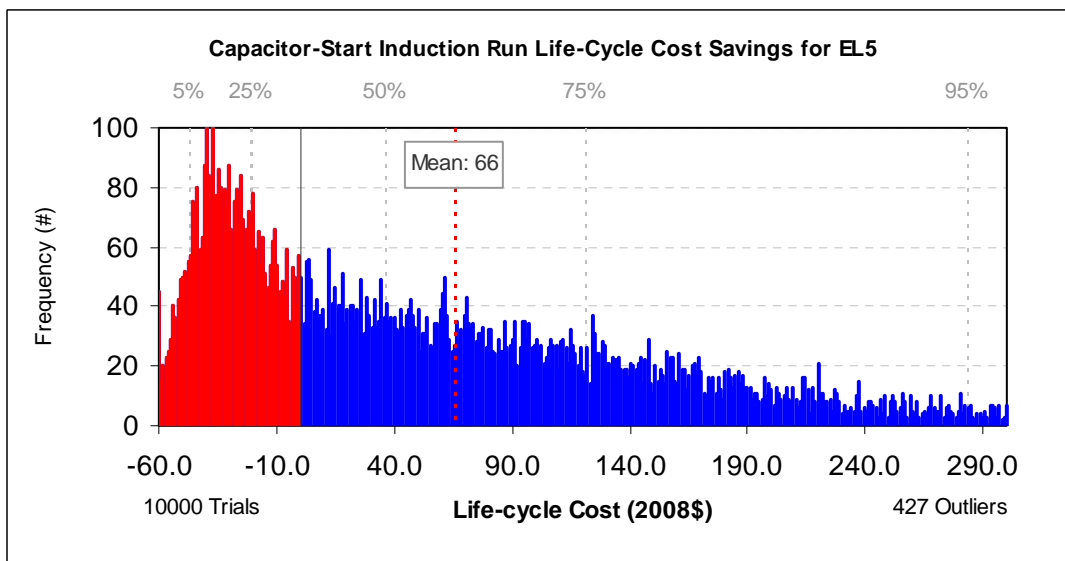
**Figure 8E.1.9 Capacitor-Start Induction Run Motors: Distribution of Life-Cycle Cost Impacts for Efficiency Level 2, 3% Discount Rate**



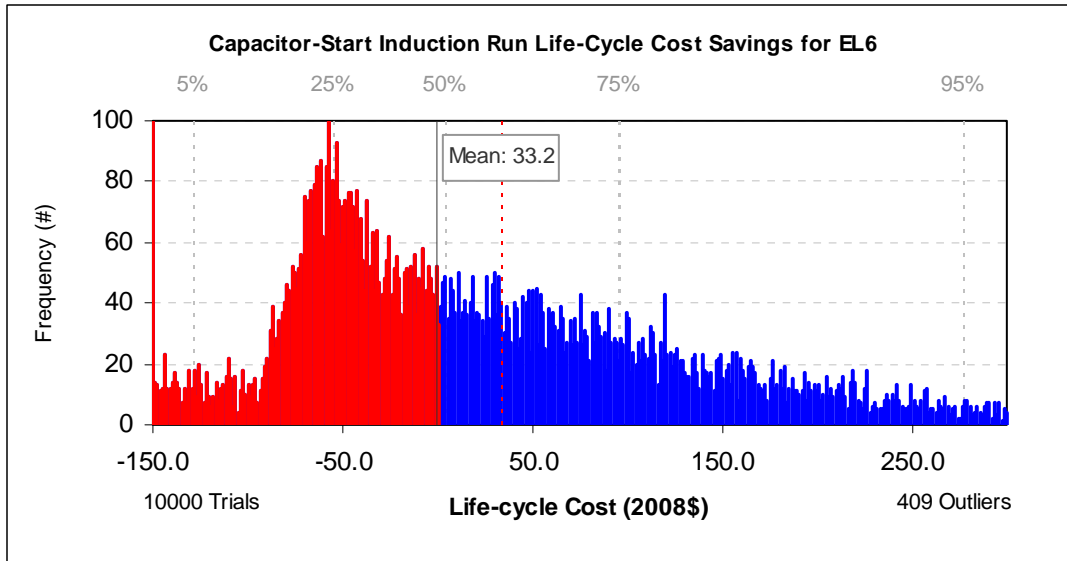
**Figure 8E.1.10 Capacitor-Start Induction Run Motors: Distribution of Life-Cycle Cost Impacts for Efficiency Level 3, 3% Discount Rate**



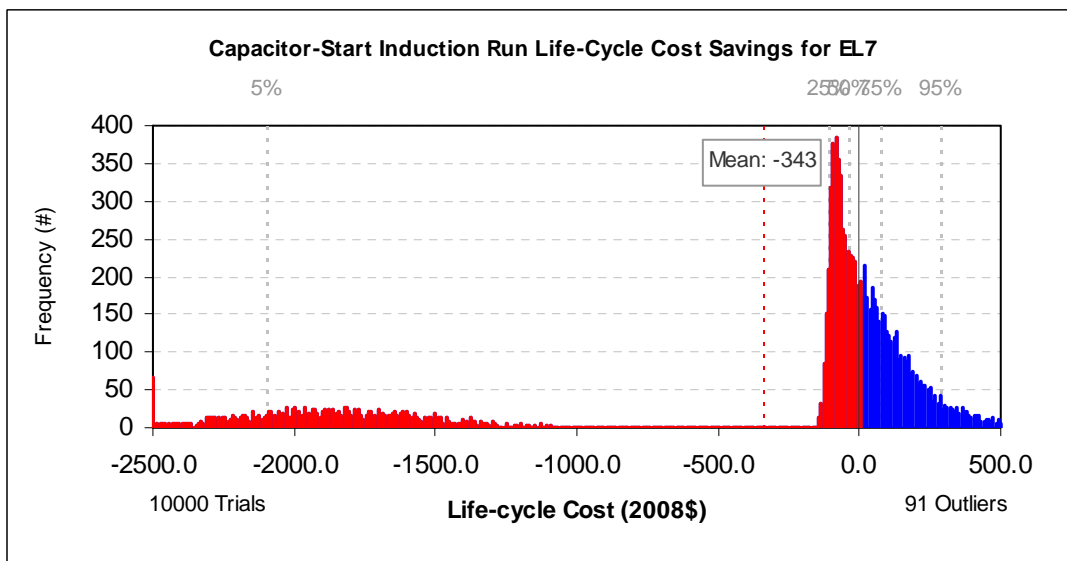
**Figure 8E.1.11 Capacitor-Start Induction Run Motors: Distribution of Life-Cycle Cost Impacts for Efficiency Level 4, 3% Discount Rate**



**Figure 8E.1.12 Capacitor-Start Induction Run Motors: Distribution of Life-Cycle Cost Impacts for Efficiency Level 5, 3% Discount Rate**

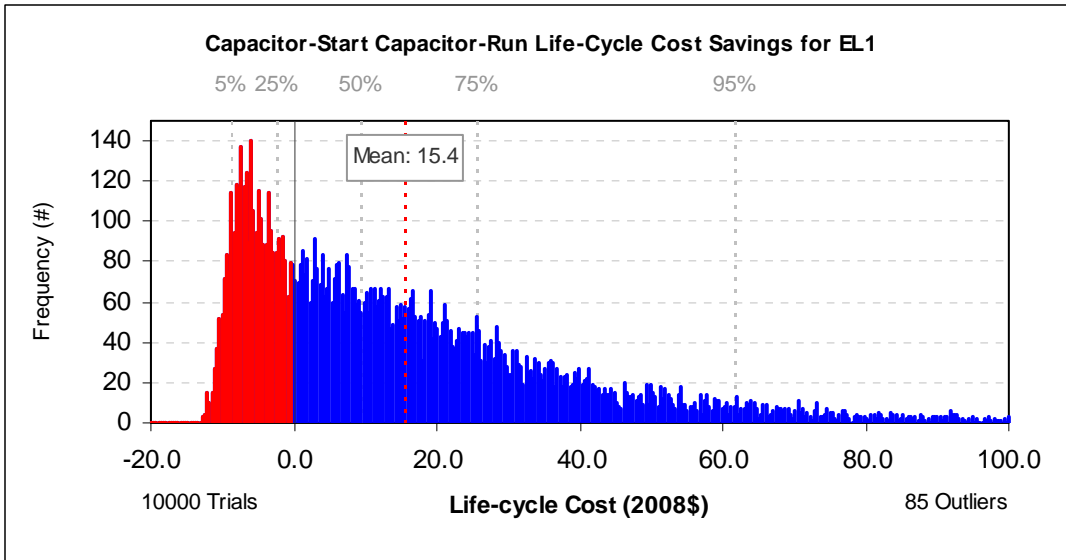


**Figure 8E.1.13 Capacitor-Start Induction Run Motors: Distribution of Life-Cycle Cost Impacts for Efficiency Level 6, 3% Discount Rate**

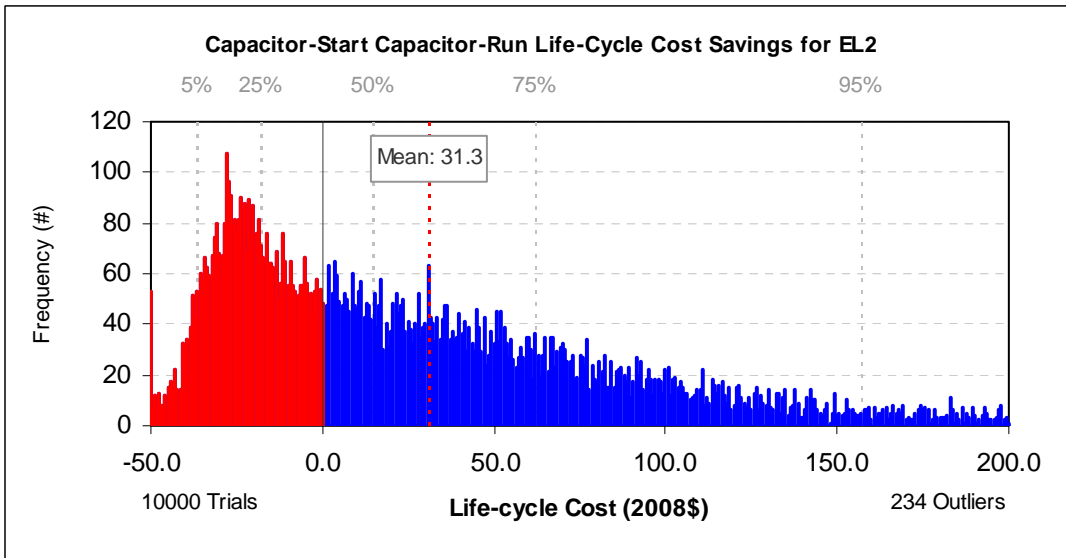


**Figure 8E.1.14 Capacitor-Start Induction Run Motors: Distribution of Life-Cycle Cost Impacts for Efficiency Level 7**

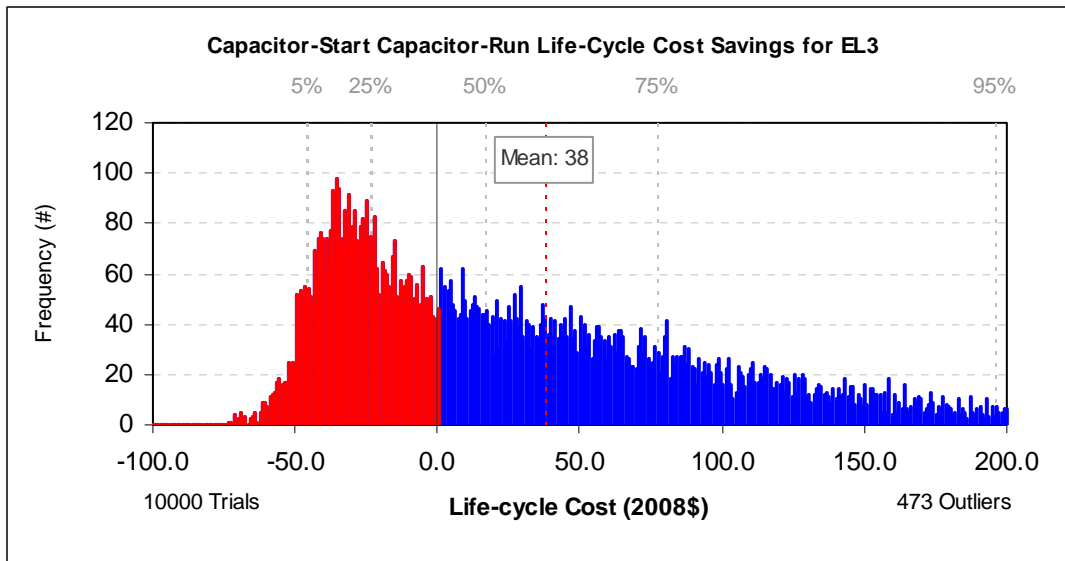
### 8E.1.1.3 Capacitor-Start Capacitor Run Motors



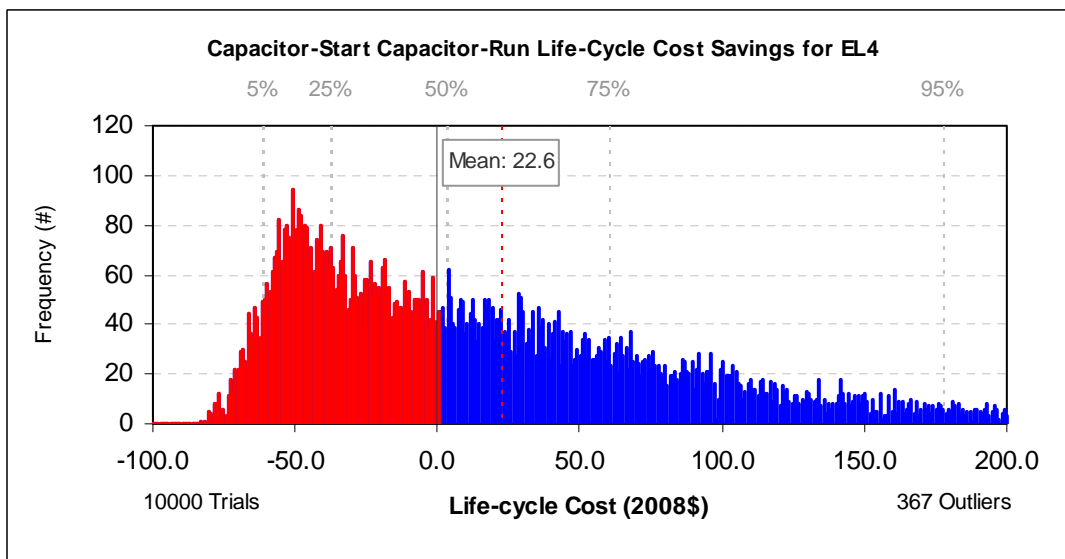
**Figure 8E.1.15** Capacitor-Start Capacitor Run Motors: Distribution of Life-Cycle Cost Impacts for Efficiency Level 1, 3% Discount Rate



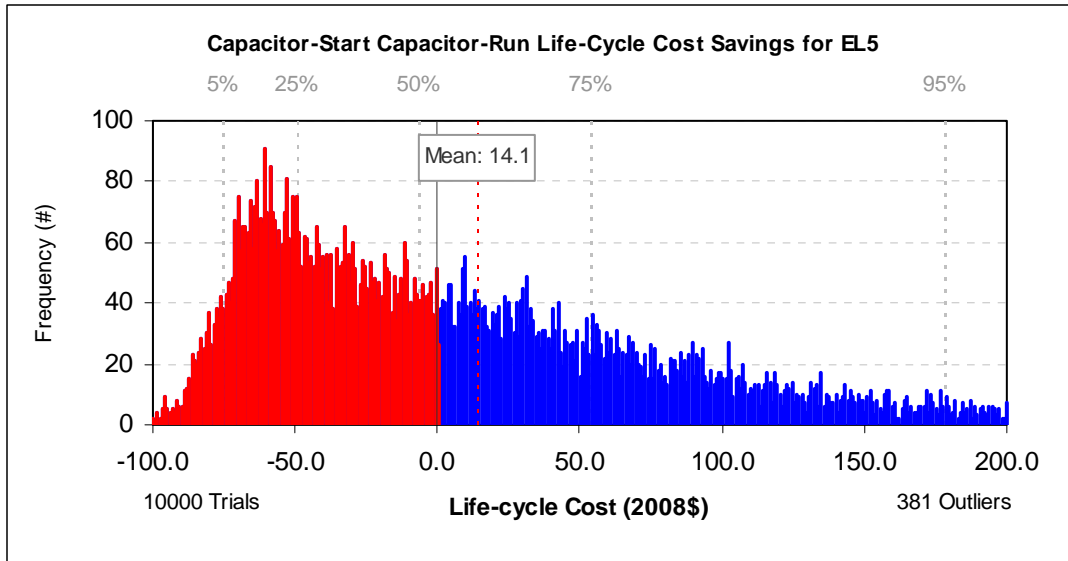
**Figure 8E.1.16** Capacitor-Start Capacitor Run Motors: Distribution of Life-Cycle Cost Impacts for Efficiency Level 2, 3% Discount Rate



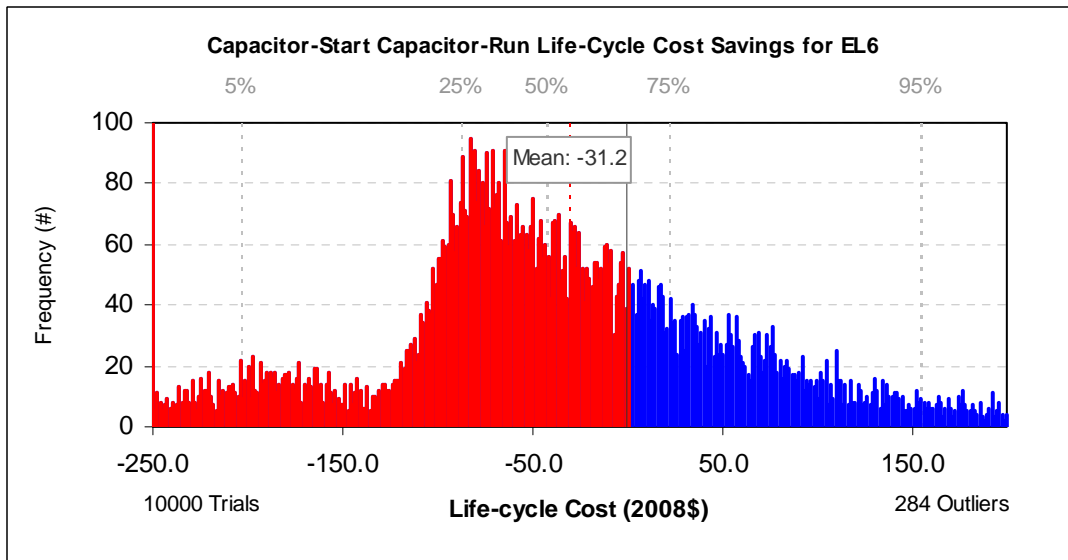
**Figure 8E.1.17 Capacitor-Start Capacitor Run Motors:  
Distribution of Life-Cycle Cost Impacts for  
Efficiency Level 3, 3% Discount Rate**



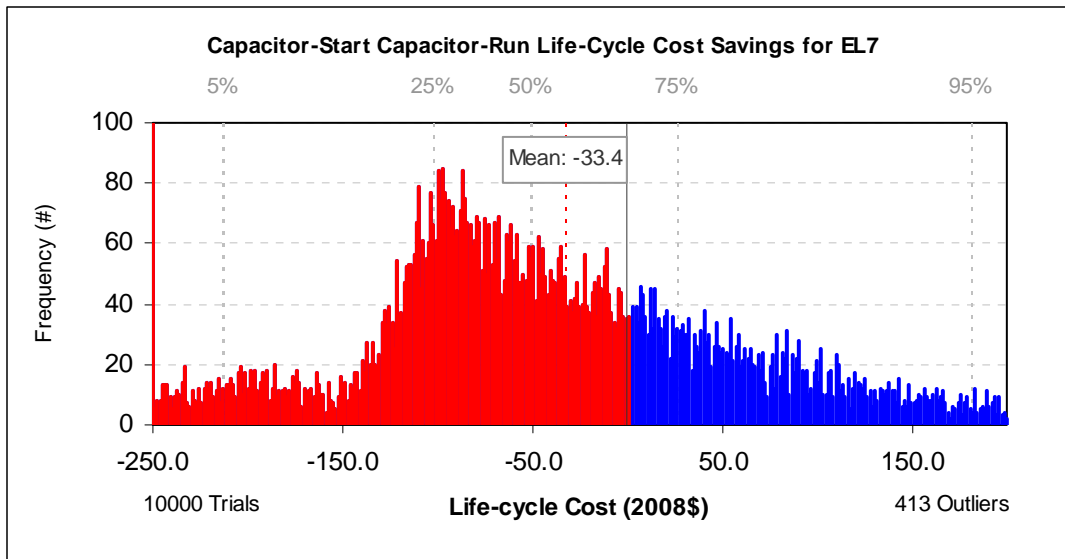
**Figure 8E.1.18 Capacitor-Start Capacitor Run Motors:  
Distribution of Life-Cycle Cost Impacts for  
Efficiency Level 4, 3% Discount Rate**



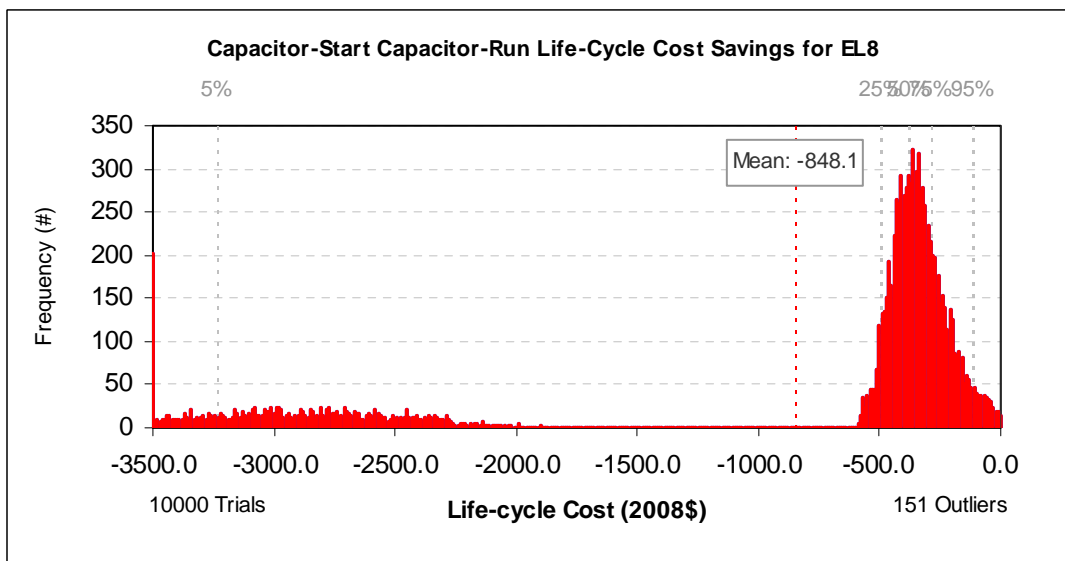
**Figure 8E.1.19 Capacitor-Start Capacitor Run Motors:  
Distribution of Life-Cycle Cost Impacts for  
Efficiency Level 5, 3% Discount Rate**



**Figure 8E.1.20 Capacitor-Start Capacitor Run Motors:  
Distribution of Life-Cycle Cost Impacts for  
Efficiency Level 6, 3% Discount Rate**



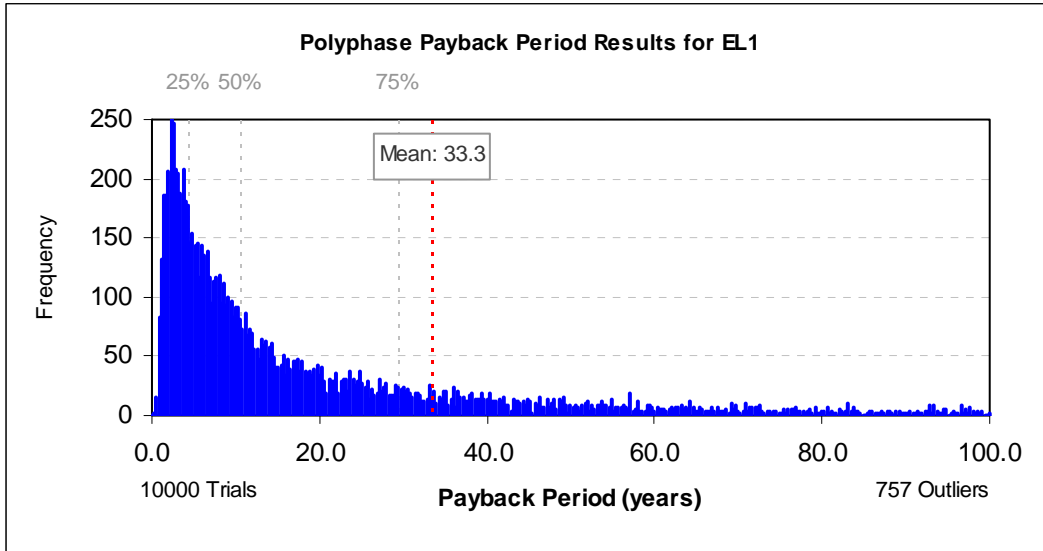
**Figure 8E.1.21 Capacitor-Start Capacitor Run Motors: Distribution of Life-Cycle Cost Impacts for Efficiency Level 7, 3% Discount Rate**



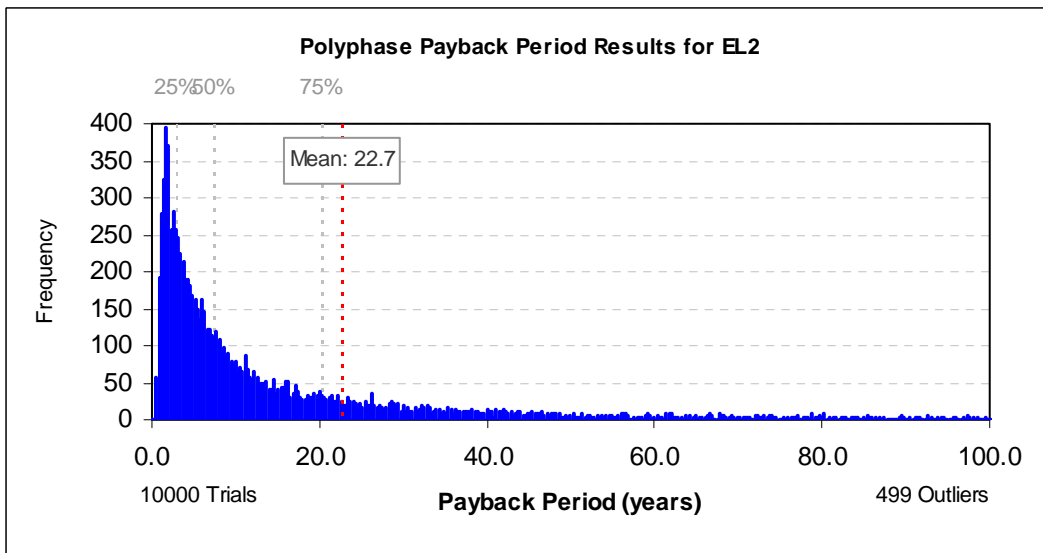
**Figure 8E.1.22 Capacitor-Start Capacitor Run Motors: Distribution of Life-Cycle Cost Impacts for Efficiency Level 8, 3% Discount Rate**

## 8E.1.2 Distribution of Payback Period Results, 3% Discount Rate

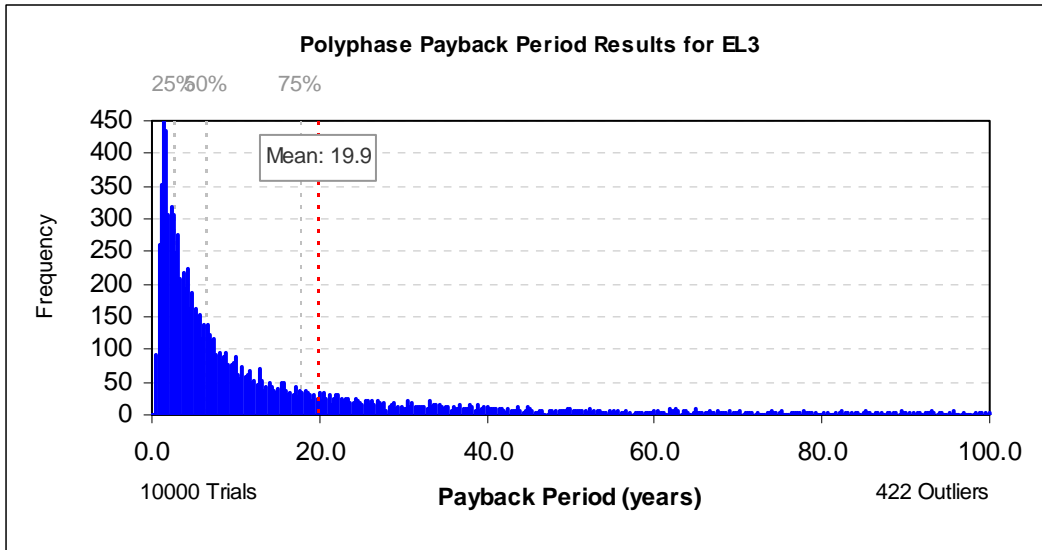
### 8E.1.2.1 Polyphase Motors



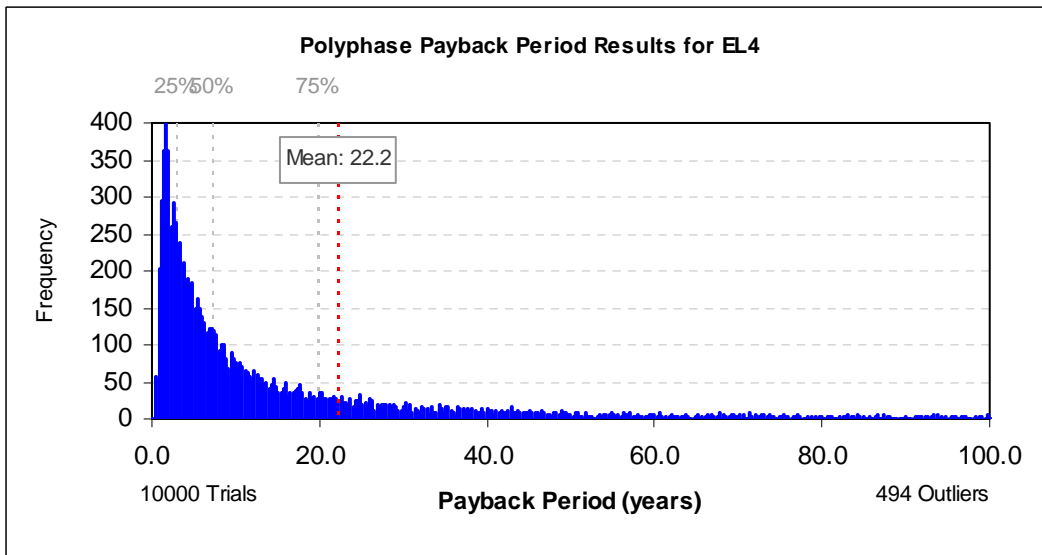
**Figure 8E.1.23 Polyphase Motors: Distribution of Payback Period Impacts for Efficiency Level 1, 3% Discount Rate**



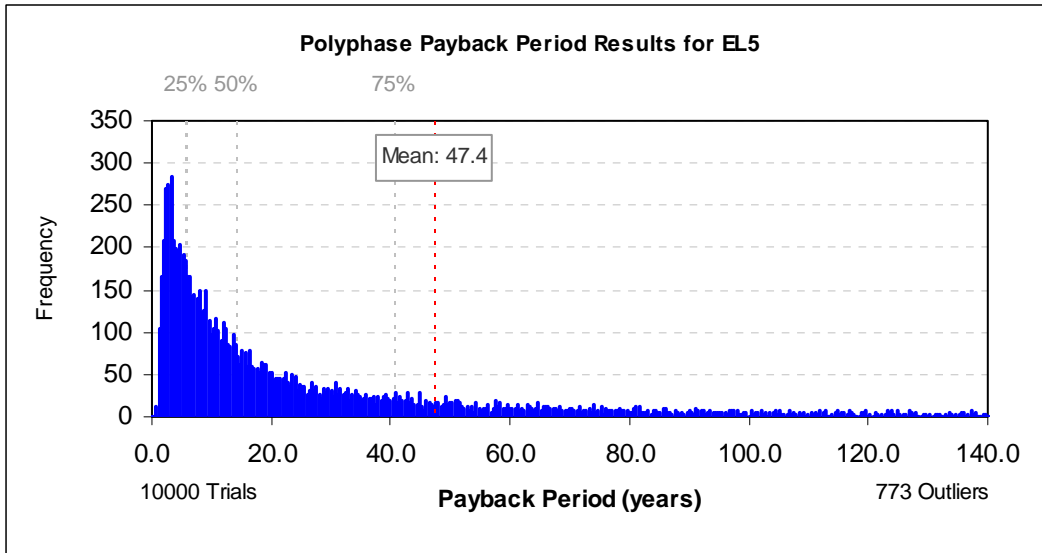
**Figure 8E.1.24 Polyphase Motors: Distribution of Payback Period Impacts for Efficiency Level 2, 3% Discount Rate**



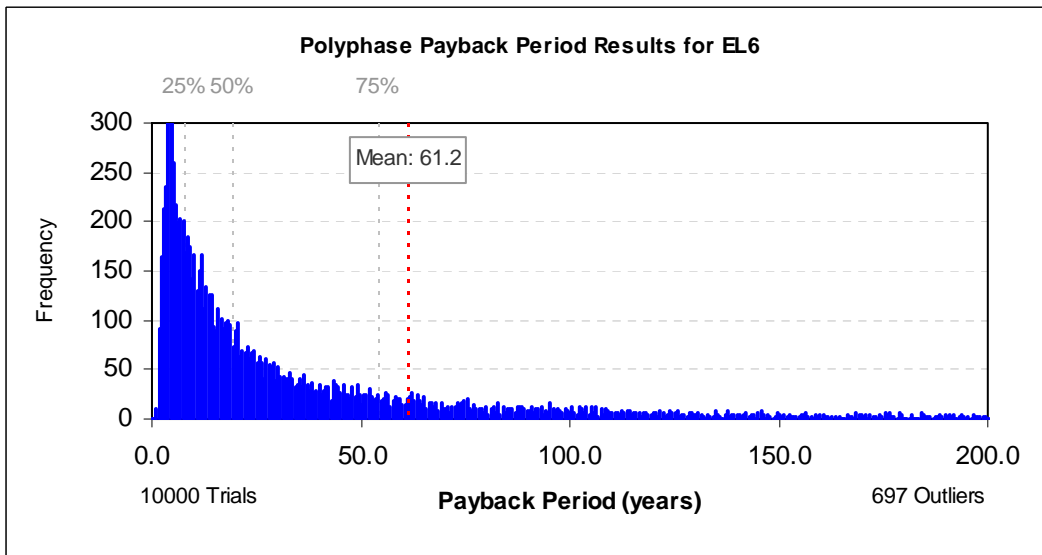
**Figure 8E.1.25 Polyphase Motors: Distribution of Payback Period Impacts for Efficiency Level 3, 3% Discount Rate**



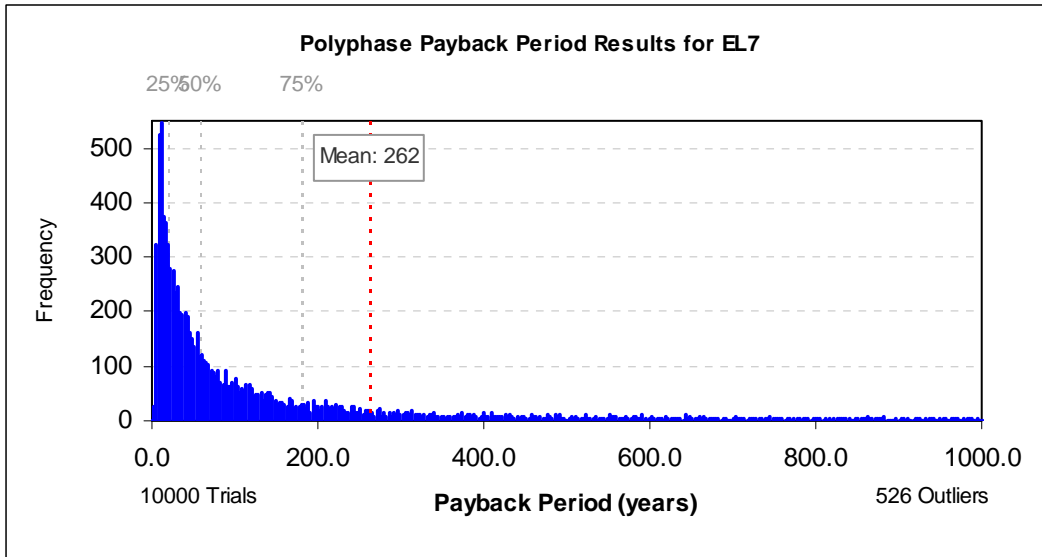
**Figure 8E.1.26 Polyphase Motors: Distribution of Payback Period Impacts for Efficiency Level 4, 3% Discount Rate**



**Figure 8E.1.27 Polyphase Motors: Distribution of Payback Period Impacts for Efficiency Level 5, 3% Discount Rate**

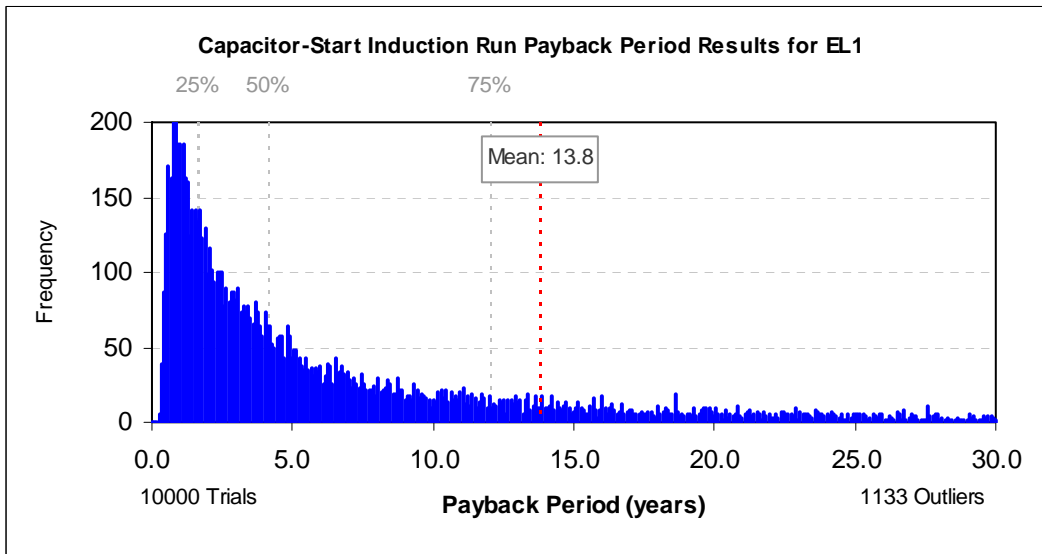


**Figure 8E.1.28 Polyphase Motors: Distribution of Payback Period Impacts for Efficiency Level 6, 3% Discount Rate**

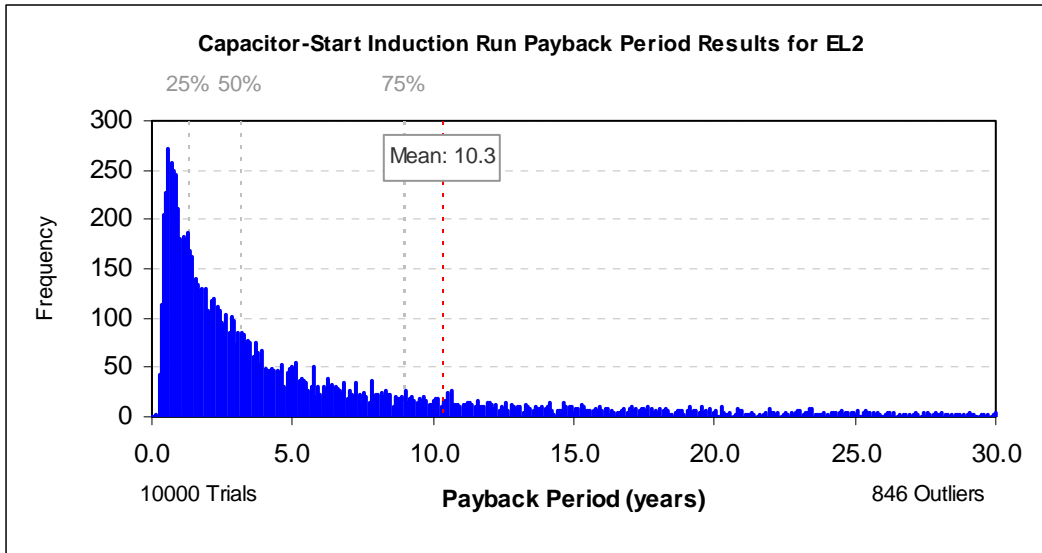


**Figure 8E.1.29 Polyphase Motors: Distribution of Payback Period Impacts for Efficiency Level 7, 3% Discount Rate**

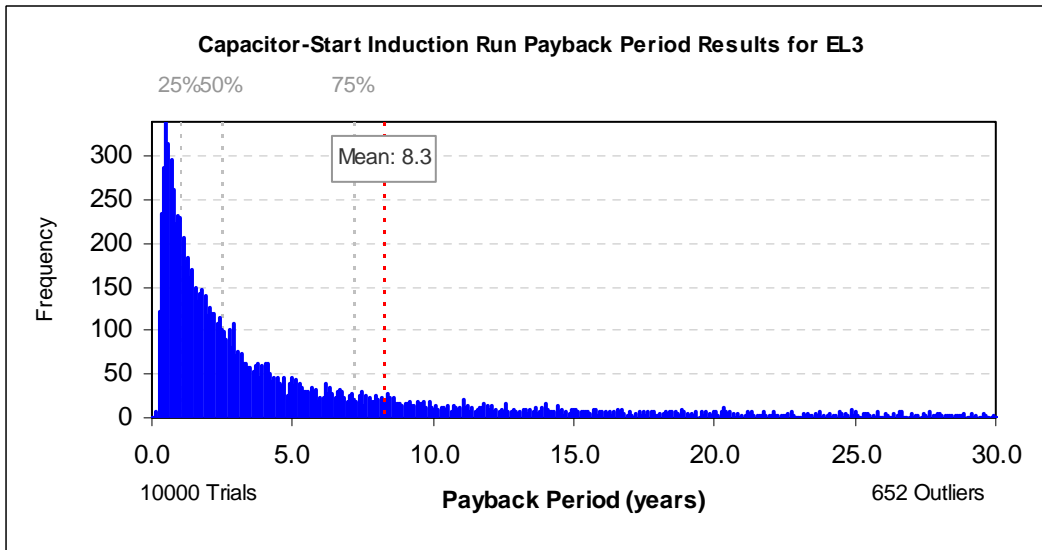
### 8E.1.2.2 Capacitor-Start Induction Run Motors



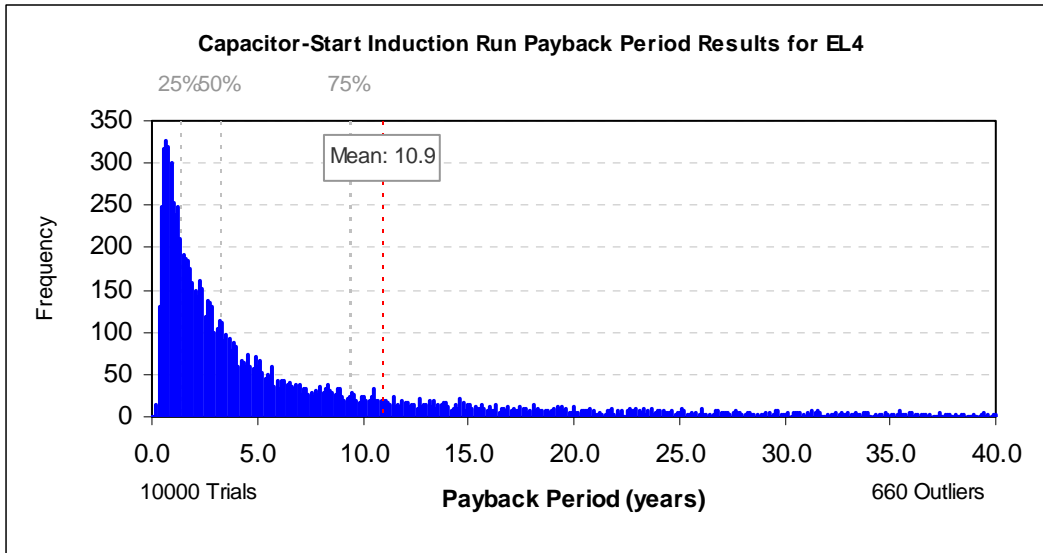
**Figure 8E.1.30 Capacitor-Start Induction Run Motors: Distribution of Payback Period Impacts for Efficiency Level 1, 3% Discount Rate**



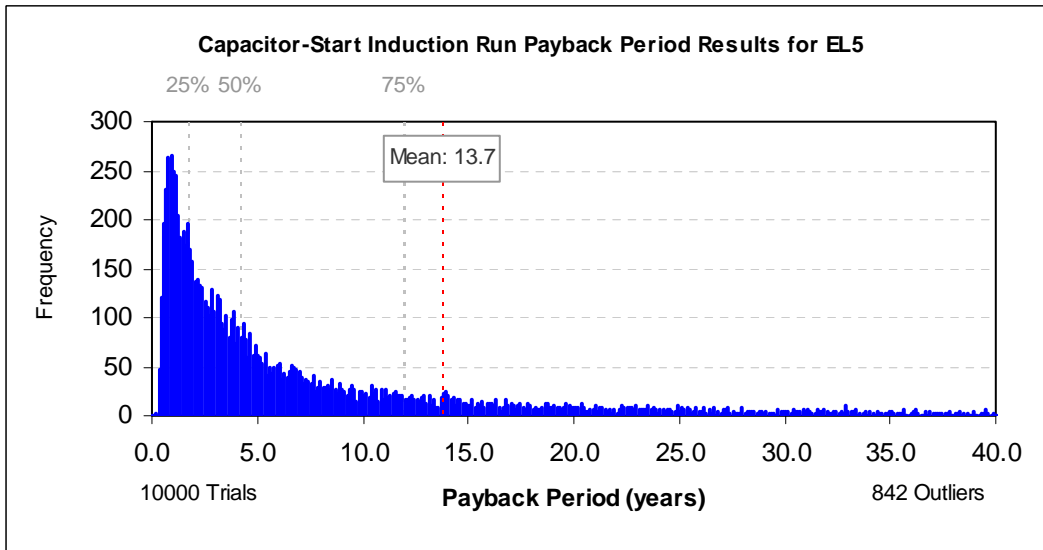
**Figure 8E.1.31 Capacitor-Start Induction Run Motors: Distribution of Payback Period Impacts for Efficiency Level 2, 3% Discount Rate**



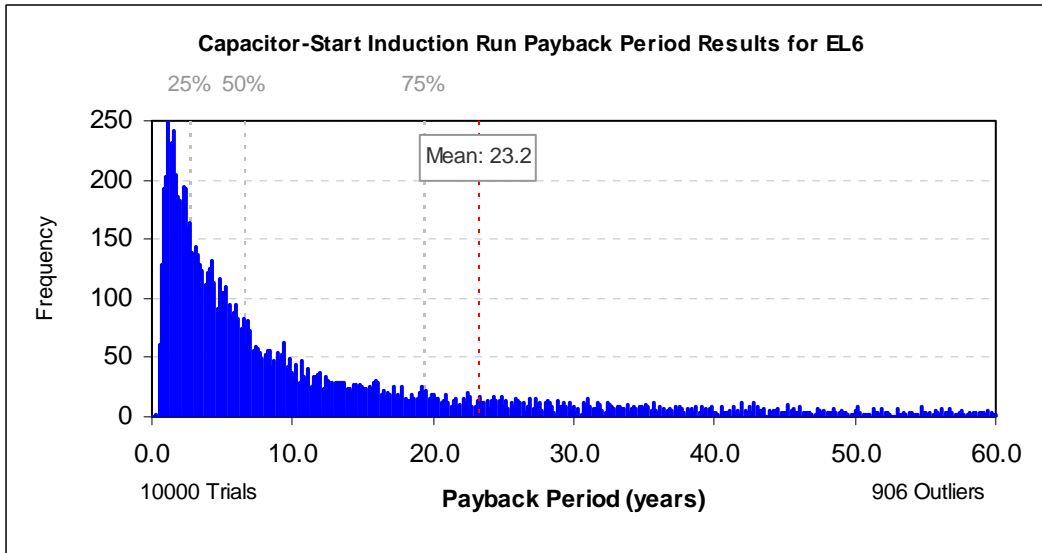
**Figure 8E.1.32 Capacitor-Start Induction Run Motors: Distribution of Payback Period Impacts for Efficiency Level 3, 3% Discount Rate**



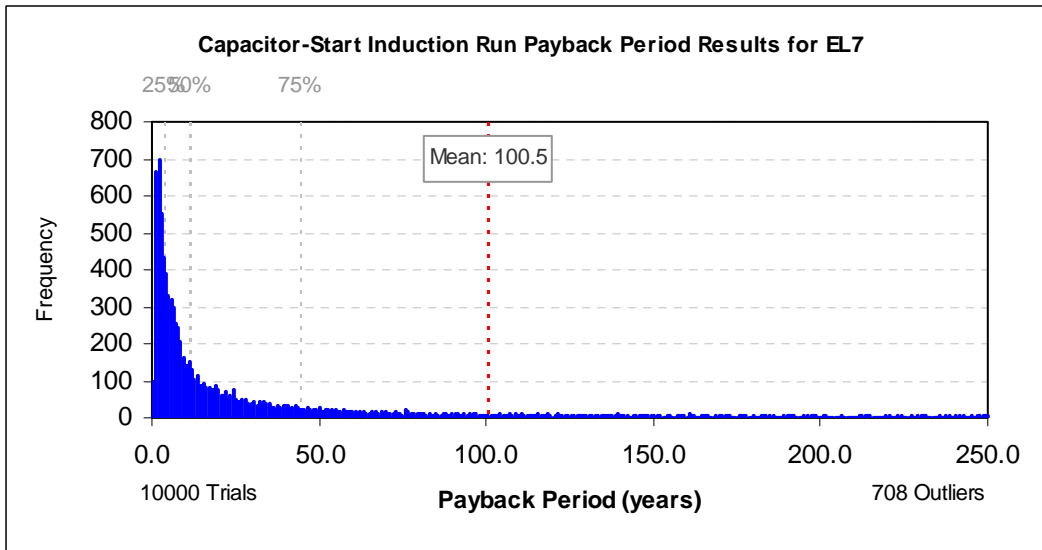
**Figure 8E.1.33 Capacitor-Start Induction Run Motors: Distribution of Payback Period Impacts for Efficiency Level 4, 3% Discount Rate**



**Figure 8E.1.34 Capacitor-Start Induction Run Motors: Distribution of Payback Period Impacts for Efficiency Level 5, 3% Discount Rate**

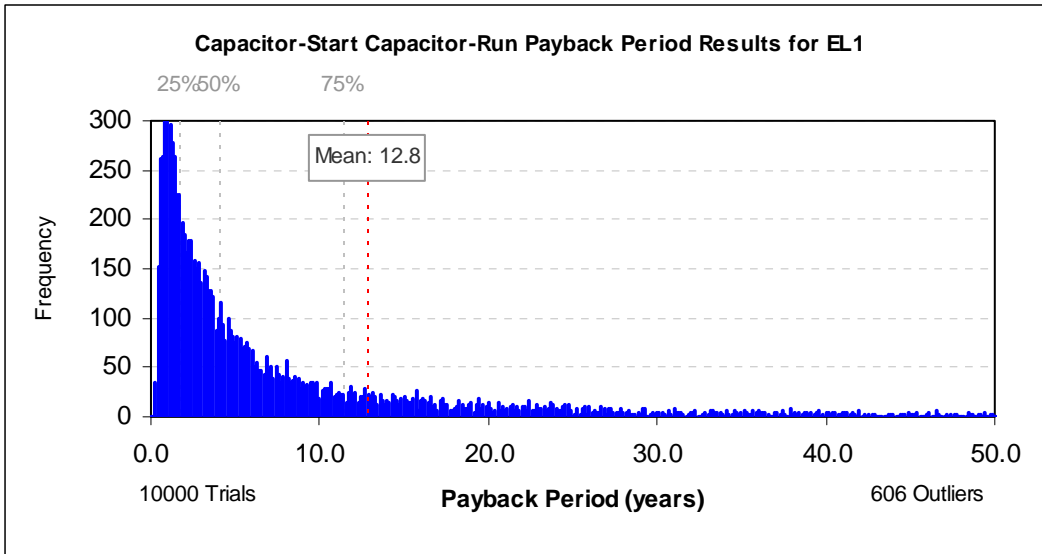


**Figure 8E.1.35 Capacitor-Start Induction Run Motors: Distribution of Payback Period Impacts for Efficiency Level 6, 3% Discount Rate**

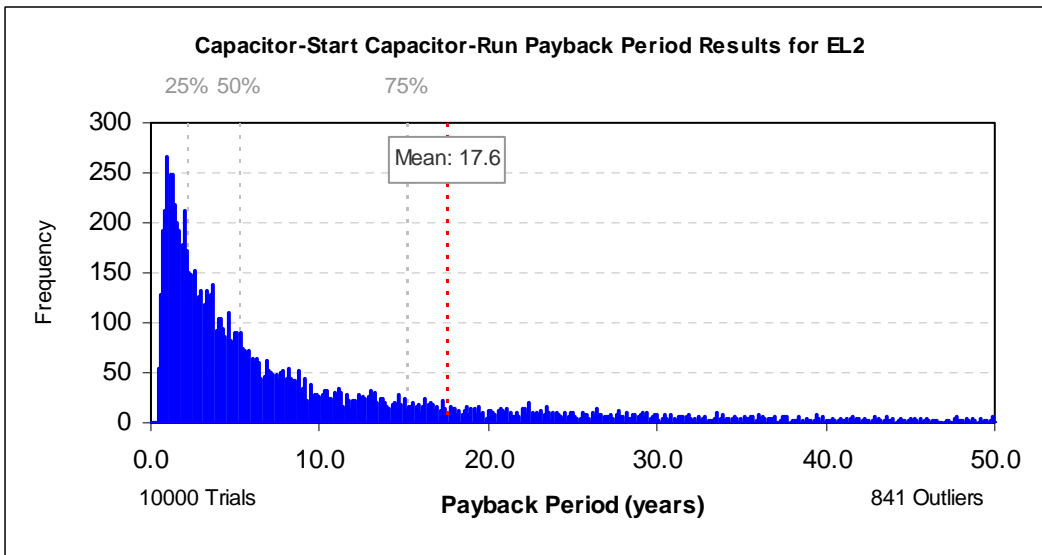


**Figure 8E.1.36 Capacitor-Start Induction Run Motors: Distribution of Payback Period Impacts for Efficiency Level 7, 3% Discount Rate**

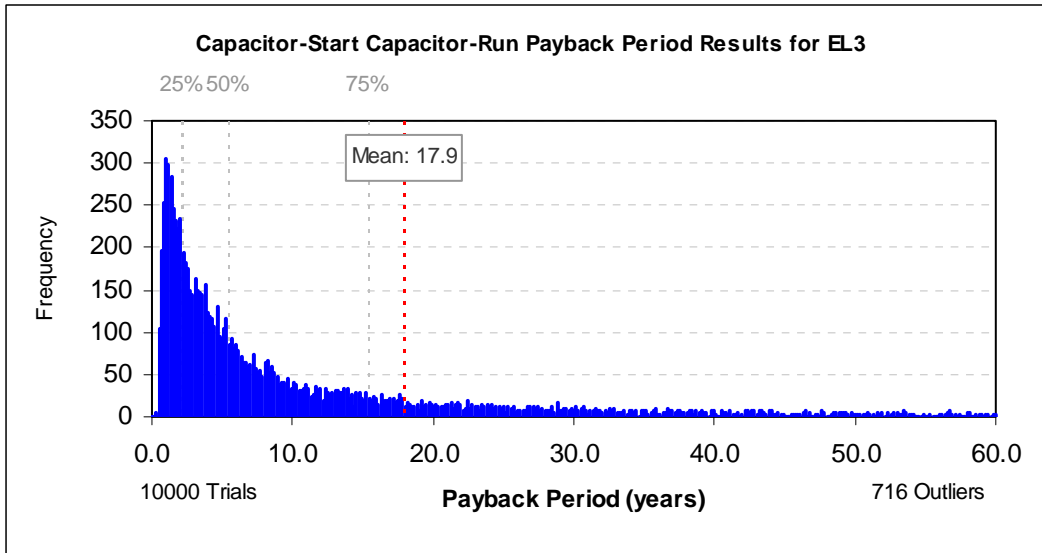
### 8E.1.2.3 Capacitor-Start Capacitor Run Motors



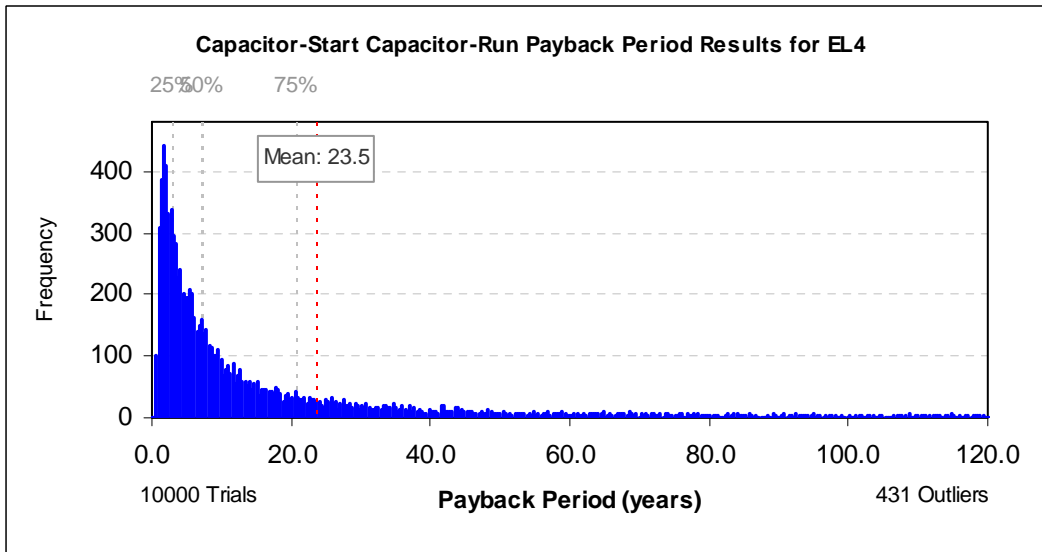
**Figure 8E.1.37 Capacitor-Start Capacitor Run Motors: Distribution of Payback Period Impacts for Efficiency Level 1, 3% Discount Rate**



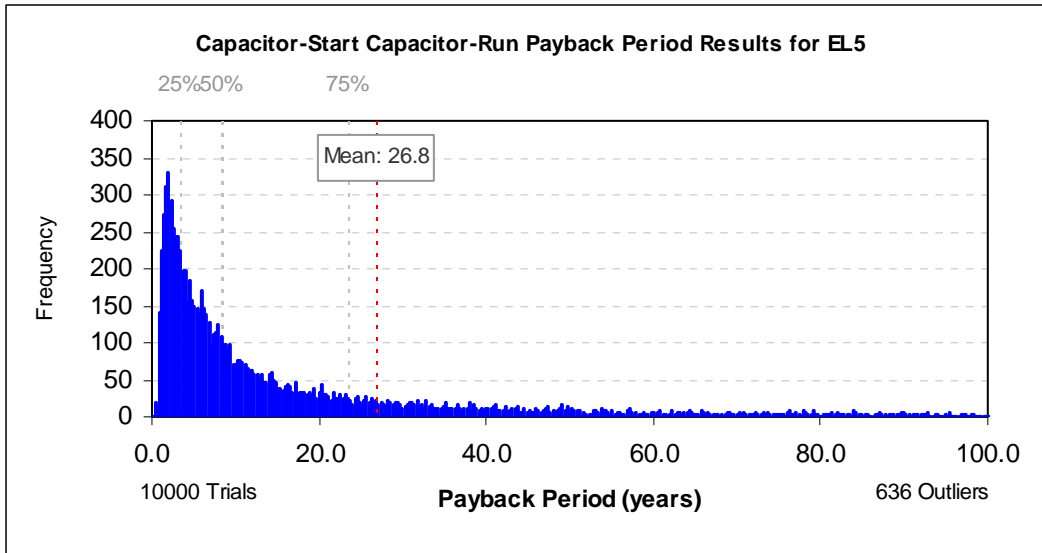
**Figure 8E.1.38 Capacitor-Start Capacitor Run Motors: Distribution of Payback Period Impacts for Efficiency Level 2, 3% Discount Rate**



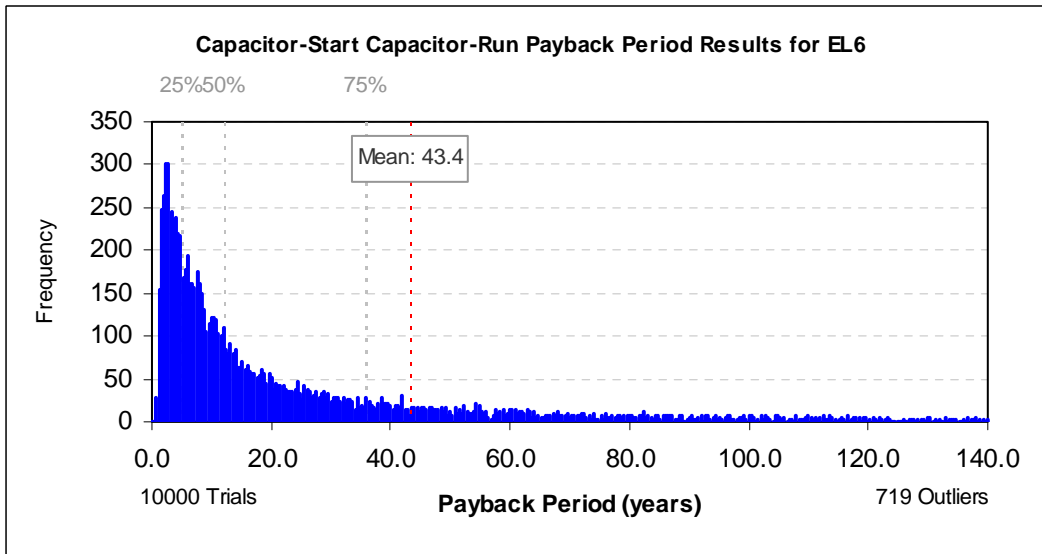
**Figure 8E.1.39 Capacitor-Start Capacitor Run Motors:  
Distribution of Payback Period Impacts for  
Efficiency Level 3, 3% Discount Rate**



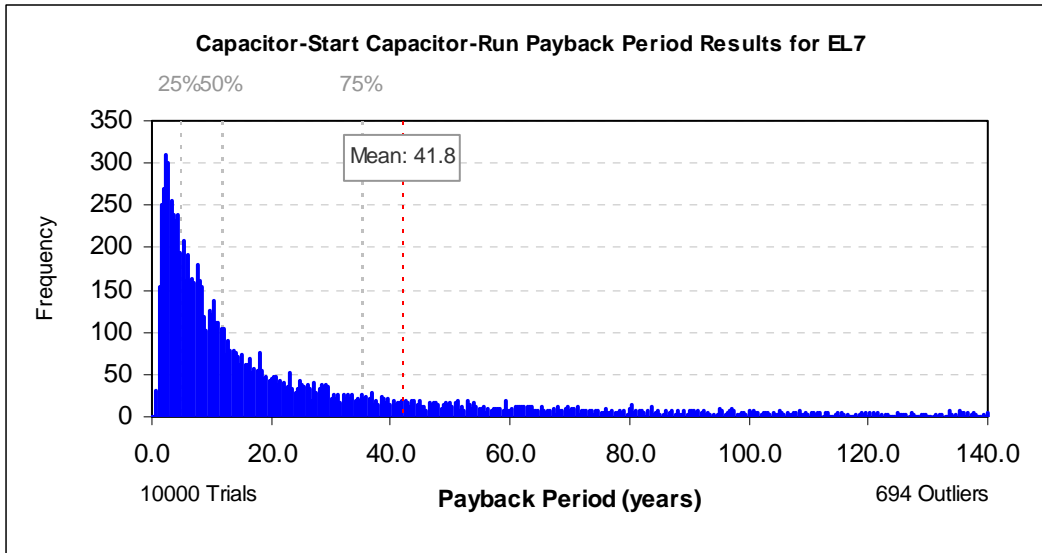
**Figure 8E.1.40 Capacitor-Start Capacitor Run Motors:  
Distribution of Payback Period Impacts for  
Efficiency Level 4, 3% Discount Rate**



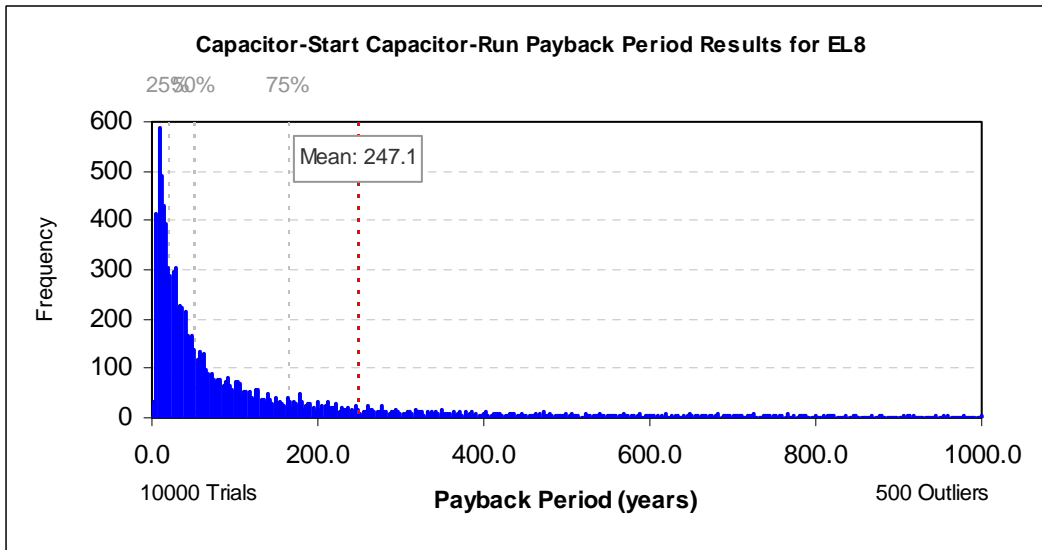
**Figure 8E.1.41 Capacitor-Start Capacitor Run Motors:  
Distribution of Payback Period Impacts for  
Efficiency Level 5, 3% Discount Rate**



**Figure 8E.1.42 Capacitor-Start Capacitor Run Motors:  
Distribution of Payback Period Impacts for  
Efficiency Level 6, 3% Discount Rate**



**Figure 8E.1.43 Capacitor-Start Capacitor Run Motors:  
Distribution of Payback Period Impacts for  
Efficiency Level 7, 3% Discount Rate**



**Figure 8E.1.44 Capacitor-Start Capacitor Run Motors:  
Distribution of Payback Period Impacts for  
Efficiency Level 8, 3% Discount Rate**

## 8E.2 LIFE-CYCLE COST AND PAYBACK PERIOD RESULTS, 7% DISCOUNT RATE

**Table 8E.2.1 Polyphase Motors: Life-Cycle Cost and Payback Period Results, 7% Discount Rate**

Energy Efficiency Level	Efficiency (%)	Life-Cycle Cost				Life-Cycle Cost Savings			Payback Period (years)	
		Average Installed Price (\$)	Average Annual Energy Use (KWh)	Average Annual Operating Cost (\$)	Average Cost (\$)	Average Savings (\$)	Consumers with		Average	Median
							Net Cost (%)	Net Benefit (%)		
Baseline	77.15	512	1735	132	1256					
1	78.70	524	1706	130	1256	0	63.6	36.4	33.3	10.6
2	80.00	531	1671	127	1247	8	50.2	49.8	22.7	7.3
3	81.60	543	1618	123	1236	20	45.5	54.5	19.9	6.3
4	82.50	551	1602	122	1237	18	48.9	51.1	22.2	7.1
5	85.20	645	1524	116	1297	-41	71.7	28.3	47.4	14.0
6	86.70	699	1504	114	1343	-87	83.0	17.0	61.2	19.2
7	88.30	1465	1469	112	2095	-839	98.1	1.9	262.0	56.6

**Table 8E.2.2 Capacitor-Start Induction Motors: Life-Cycle Cost and Payback Period Results, 7% Discount Rate**

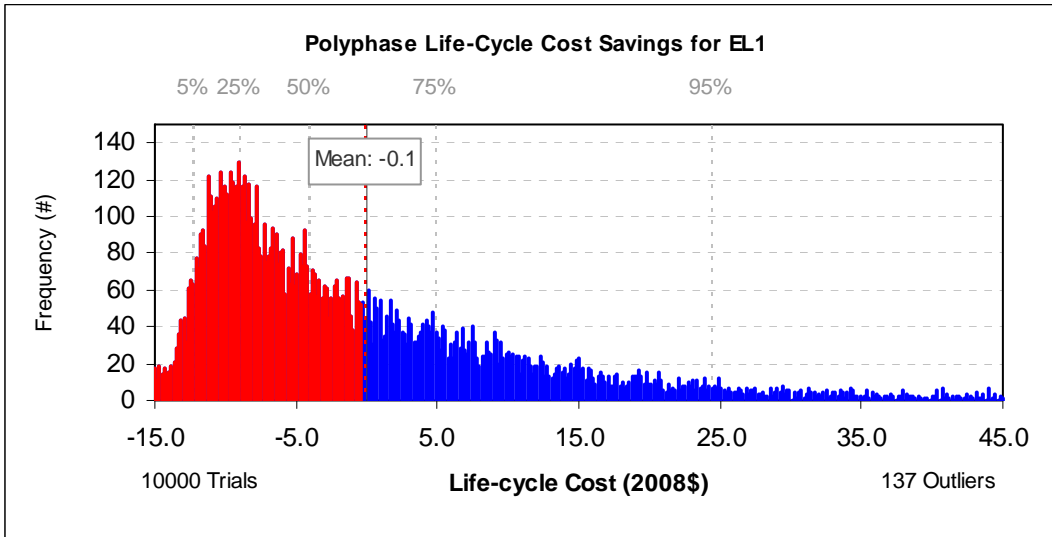
Energy Efficiency Level	Efficiency (%)	Life-Cycle Cost				Life-Cycle Cost Savings			Payback Period (years)	
		Average Installed Price (\$)	Average Annual Energy Use (KWh)	Average Annual Operating Cost (\$)	Average Cost (\$)	Average Savings (\$)	Consumers with		Average	Median
							Net Cost (%)	Net Benefit (%)		
CSCR Baseline	65.53	502	1075	81	867					
Baseline	57.70	491	1292	97	930					
1	59.50	500	1240	93	921	9	39.4	60.6	13.8	4.1
2	62.00	505	1178	88	906	24	32.7	67.3	10.3	3.1
3	64.20	508	1123	84	889	40	27.2	72.8	8.3	2.5
4	68.50	526	1033	77	876	54	33.2	66.8	10.9	3.3
5	71.20	544	983	74	878	52	39.3	60.7	13.7	4.2
6	73.00	589	953	72	912	18	53.1	46.9	23.2	6.5
7	77.00	991	888	67	1292	-362	64.0	36.0	100.5	11.2

**Table 8E.2.3 Capacitor-Start Capacitor Run Motors: Life-Cycle Cost and Payback Period Results, 7% Discount Rate**

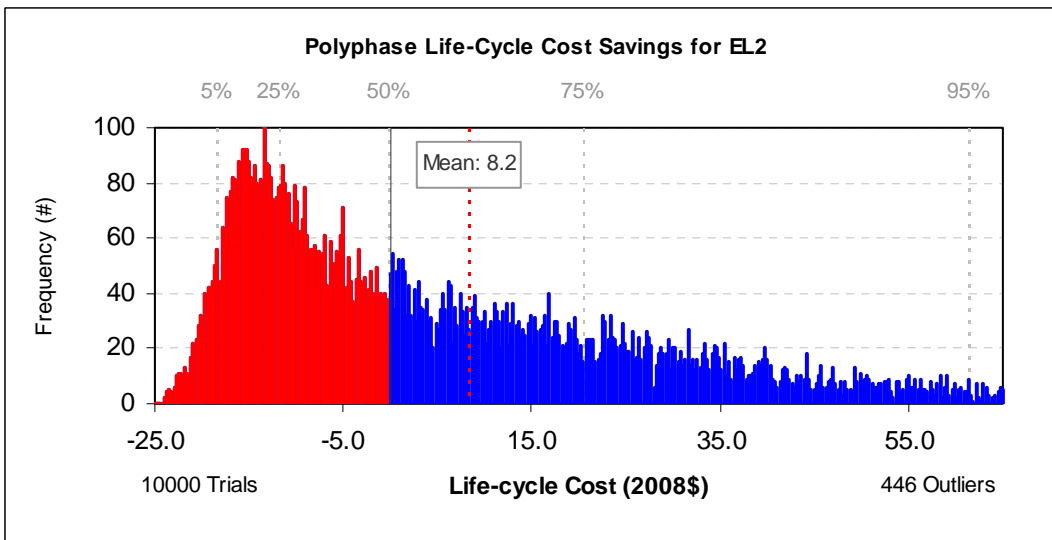
Energy Efficiency Level	Efficiency (%)	Life-Cycle Cost				Life-Cycle Cost Savings			Payback Period (years)	
		Average Installed Price (\$)	Average Annual Energy Use (KWh)	Average Annual Operating Cost (\$)	Average Cost (\$)	Average Savings (\$)	Consumers with		Average	Median
							Net Cost (%)	Net Benefit (%)		
CSIR Baseline	63.38	544	1734	130	1133					
Baseline	71.00	542	1469	110	1040					
1	74.30	552	1407	106	1028	12	34.1	65.9	12.8	4.0
2	78.30	581	1294	97	1017	23	44.1	55.9	17.6	5.2
3	80.30	591	1249	94	1012	28	45.1	54.9	17.9	5.3
4	81.60	607	1255	94	1028	12	53.6	46.4	23.5	7.3
5	82.70	620	1242	93	1037	3	58.8	41.2	26.8	8.3
6	83.70	669	1234	93	1083	-43	72.8	27.2	43.4	12.1
7	85.40	688	1191	89	1087	-47	73.0	27.0	41.8	11.8
8	87.30	1515	1158	87	1903	-863	99.1	0.9	247.1	50.5

## 8E.2.1 Distribution of Life-Cycle Cost Results, 7% Discount Rate

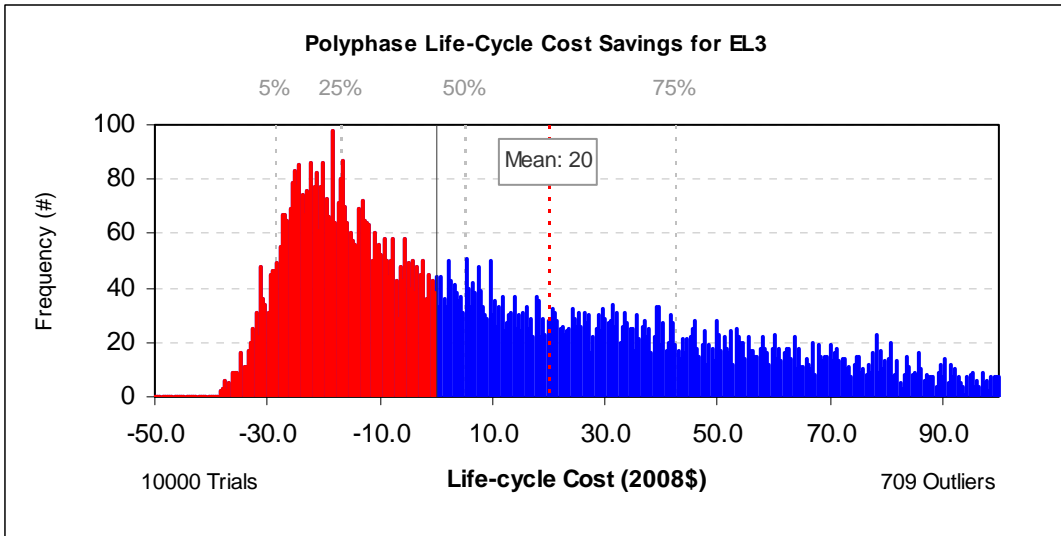
### 8E.2.1.1 Polyphase Motors



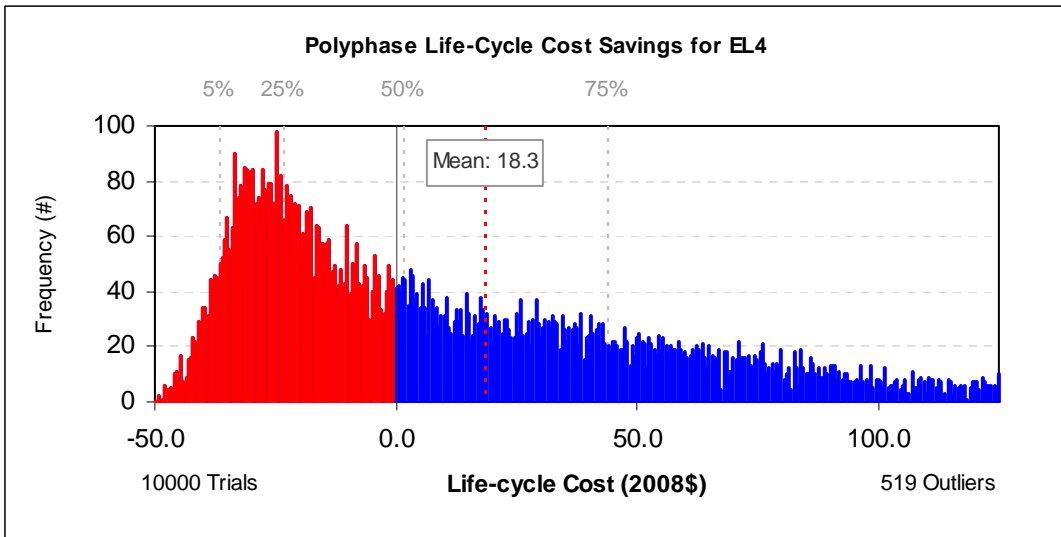
**Figure 8E.2.1 Polyphase Motors: Distribution of Life-Cycle Cost Impacts for Efficiency Level 1, 7% Discount Rate**



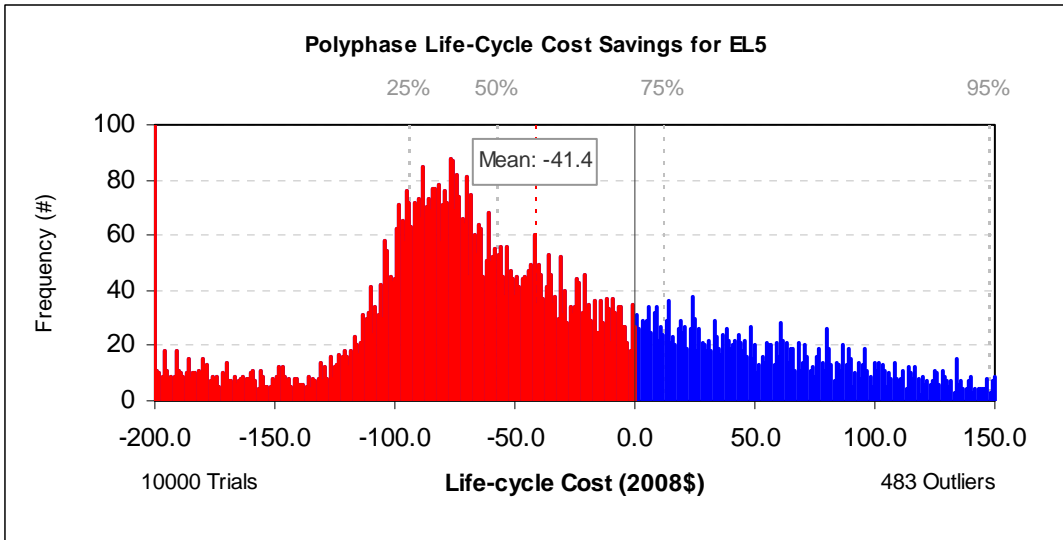
**Figure 8E.2.2 Polyphase Motors: Distribution of Life-Cycle Cost Impacts for Efficiency Level 2, 7% Discount Rate**



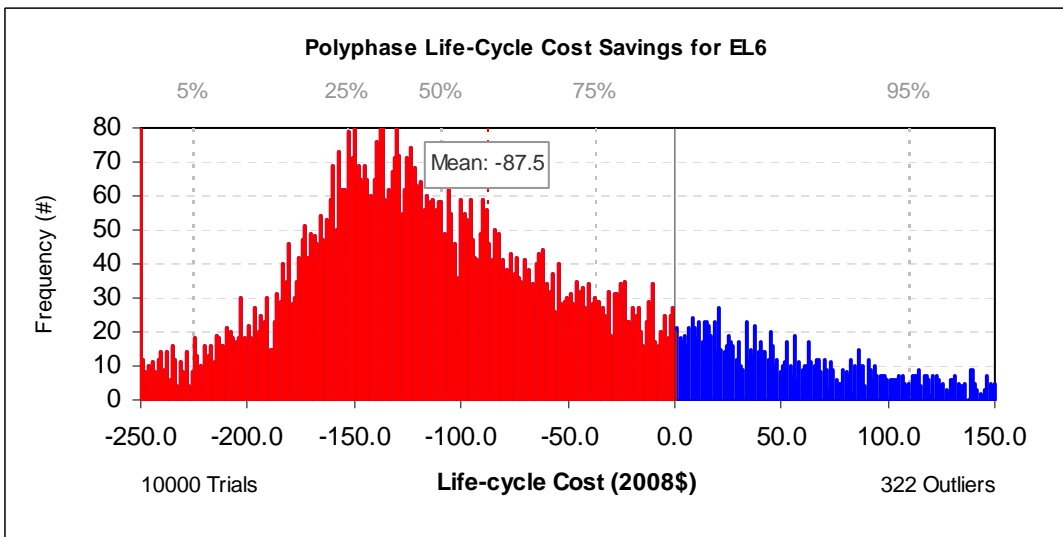
**Figure 8E.2.3 Polyphase Motors: Distribution of Life-Cycle Cost Impacts for Efficiency Level 3, 7% Discount Rate**



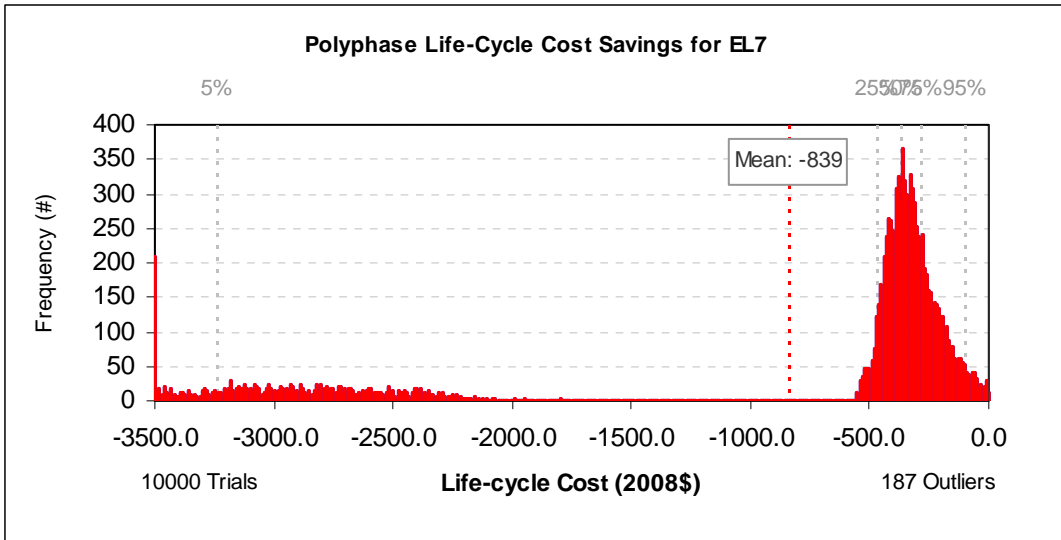
**Figure 8E.2.4 Polyphase Motors: Distribution of Life-Cycle Cost Impacts for Efficiency Level 4, 7% Discount Rate**



**Figure 8E.2.5 Polyphase Motors: Distribution of Life-Cycle Cost Impacts for Efficiency Level 5, 7% Discount Rate**

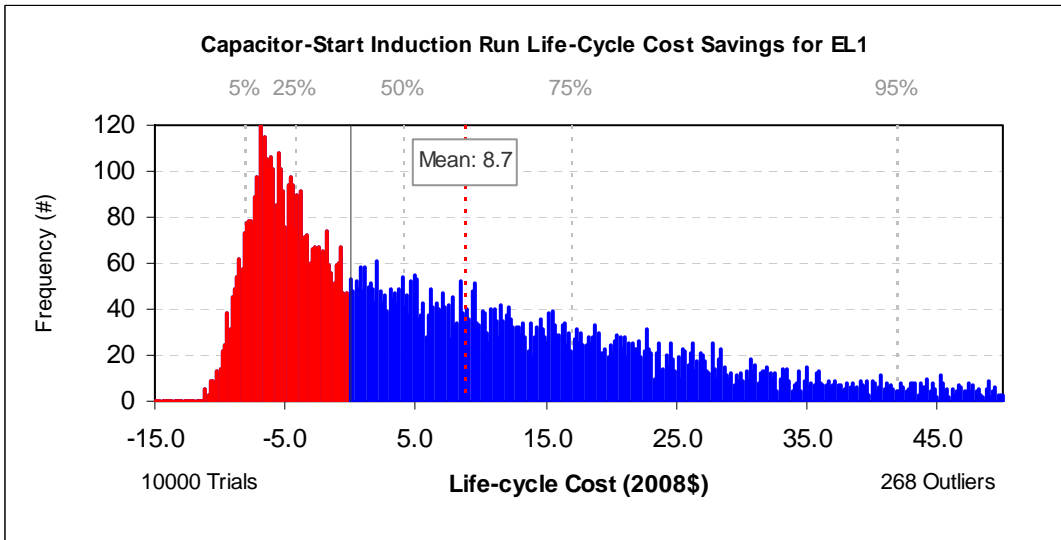


**Figure 8E.2.6 Polyphase Motors: Distribution of Life-Cycle Cost Impacts for Efficiency Level 6, 7% Discount Rate**

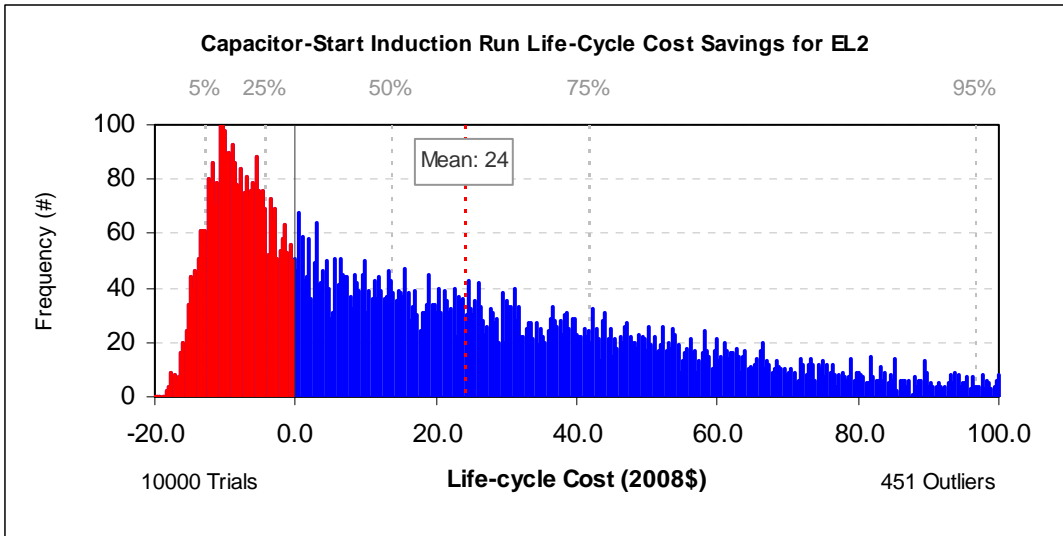


**Figure 8E.2.7 Polyphase Motors: Distribution of Life-Cycle Cost Impacts for Efficiency Level 7, 7% Discount Rate**

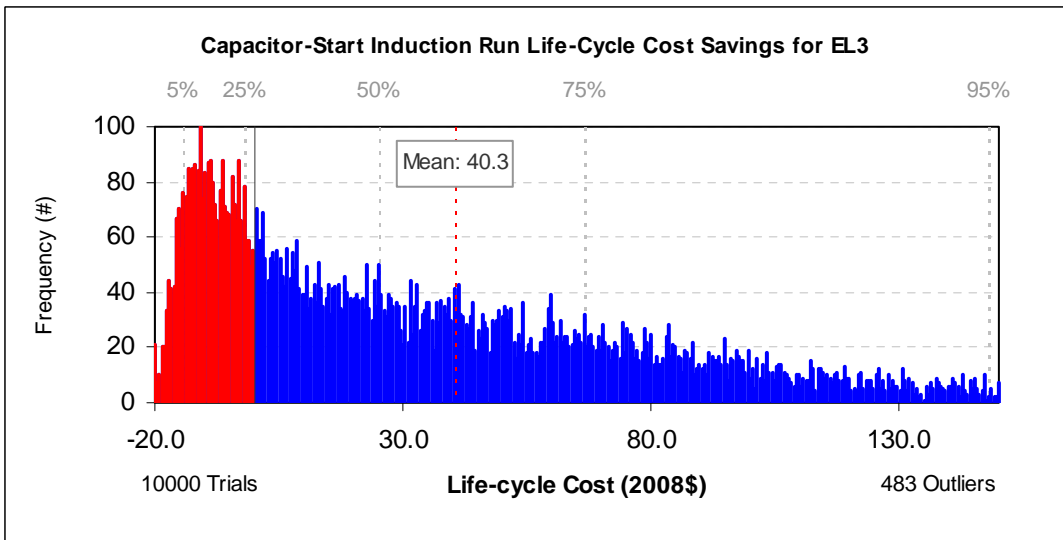
**8E.2.1.2 Capacitor-Start Induction Run Motors**



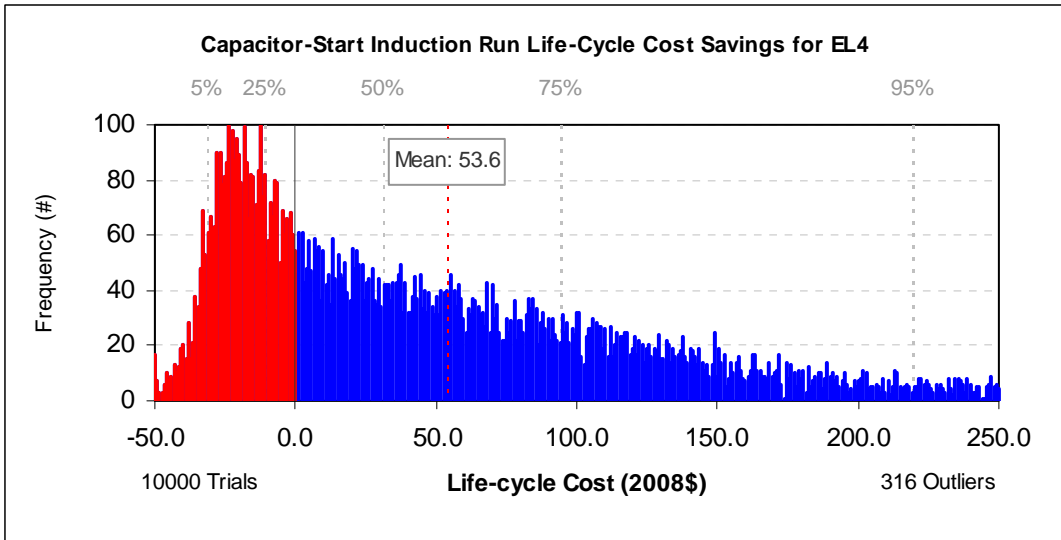
**Figure 8E.2.8 Capacitor-Start Induction Run Motors: Distribution of Life-Cycle Cost Impacts for Efficiency Level 1, 7% Discount Rate**



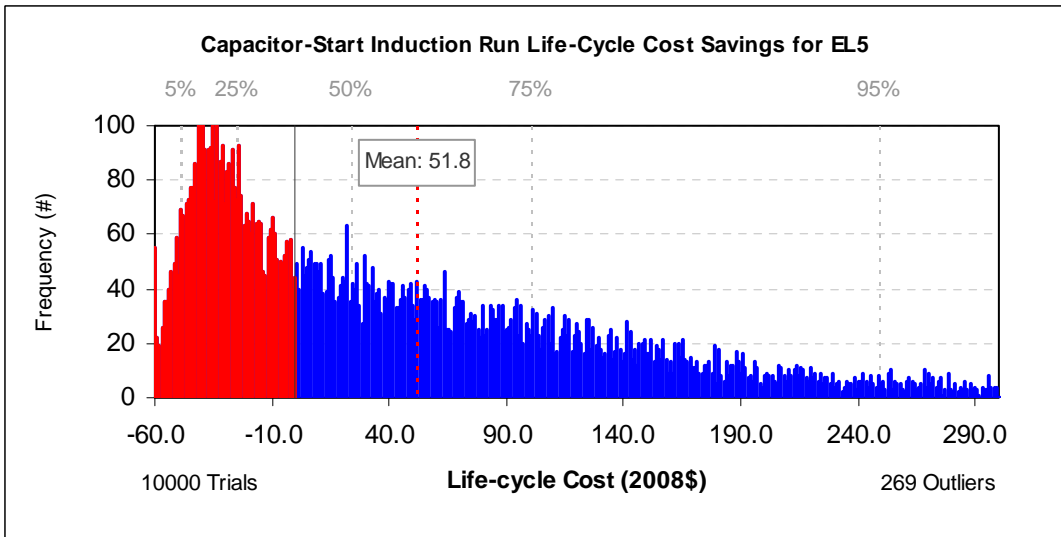
**Figure 8E.2.9 Capacitor-Start Induction Run Motors: Distribution of Life-Cycle Cost Impacts for Efficiency Level 2, 7% Discount Rate**



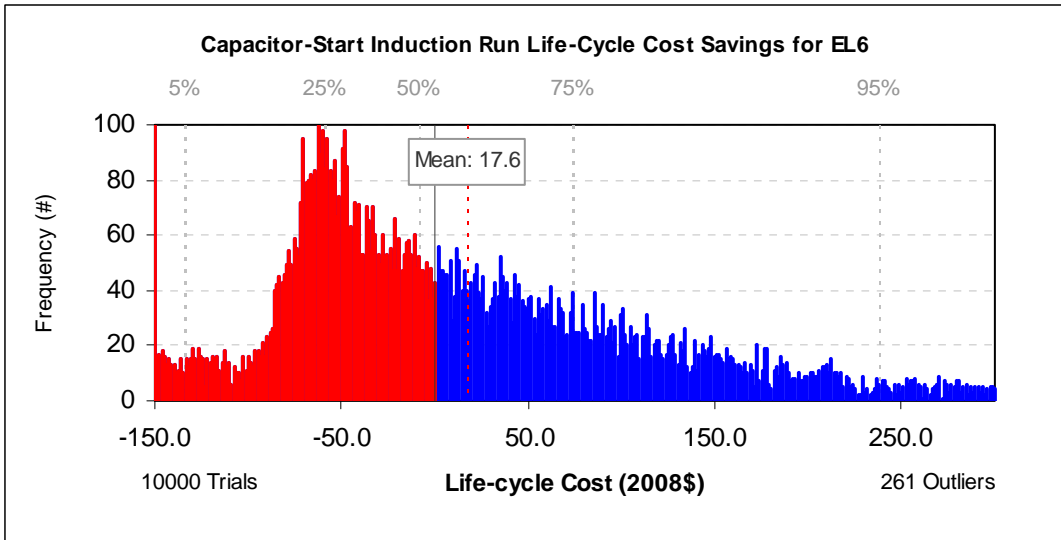
**Figure 8E.2.10 Capacitor-Start Induction Run Motors: Distribution of Life-Cycle Cost Impacts for Efficiency Level 3, 7% Discount Rate**



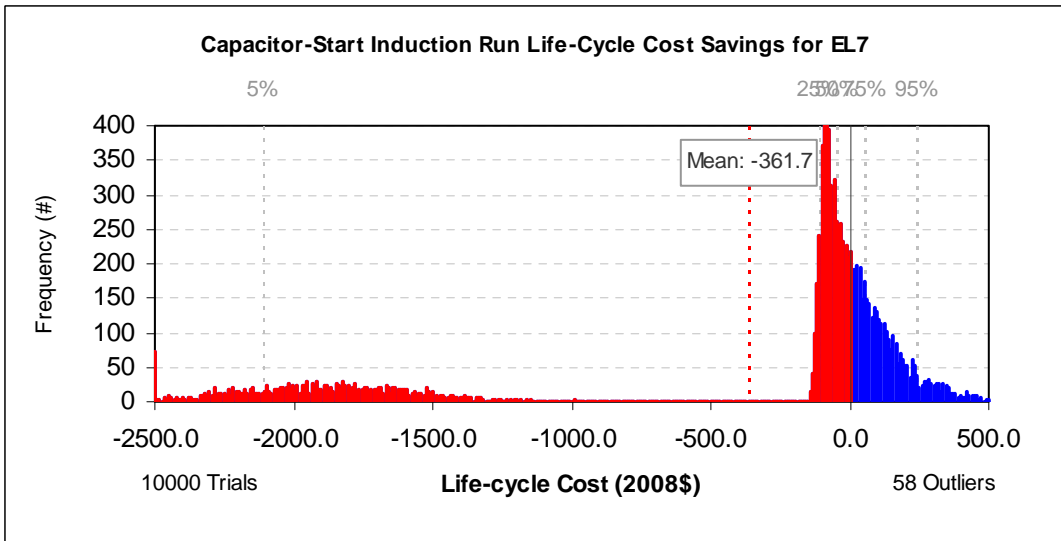
**Figure 8E.2.11 Capacitor-Start Induction Run Motors: Distribution of Life-Cycle Cost Impacts for Efficiency Level 4, 7% Discount Rate**



**Figure 8E.2.12 Capacitor-Start Induction Run Motors: Distribution of Life-Cycle Cost Impacts for Efficiency Level 5, 7% Discount Rate**

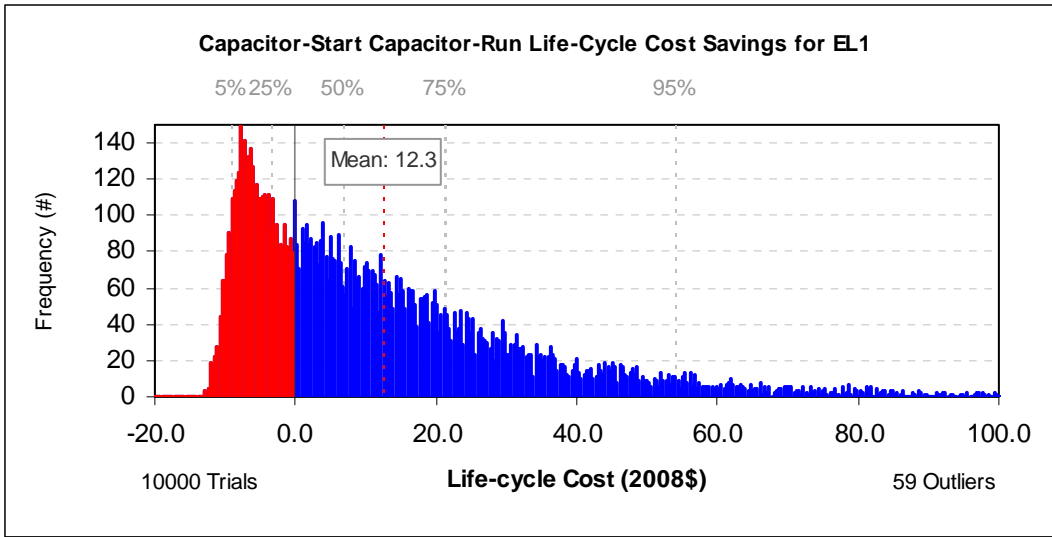


**Figure 8E.2.13 Capacitor-Start Induction Run Motors: Distribution of Life-Cycle Cost Impacts for Efficiency Level 6, 7% Discount Rate**

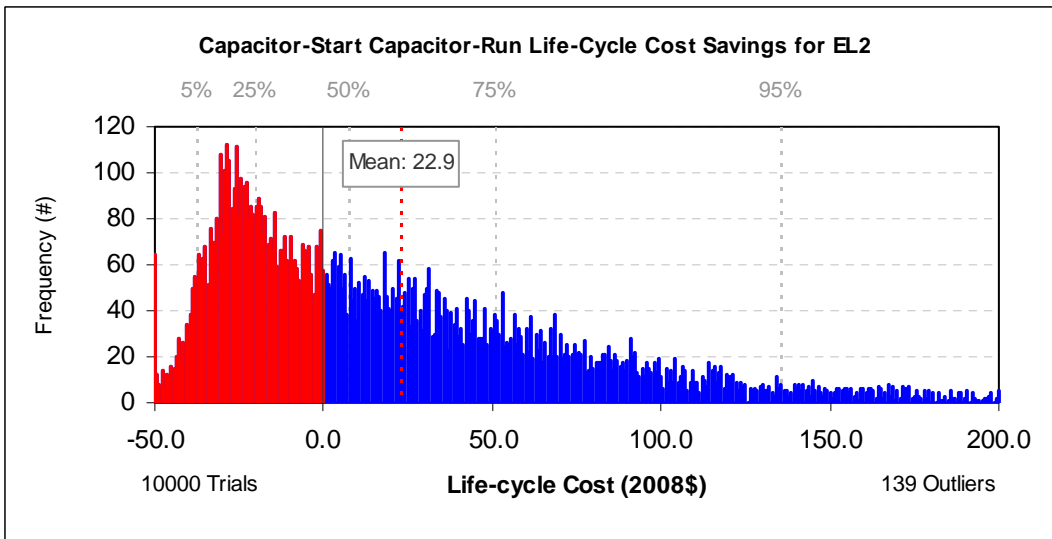


**Figure 8E.2.14 Capacitor-Start Induction Run Motors: Distribution of Life-Cycle Cost Impacts for Efficiency Level 7**

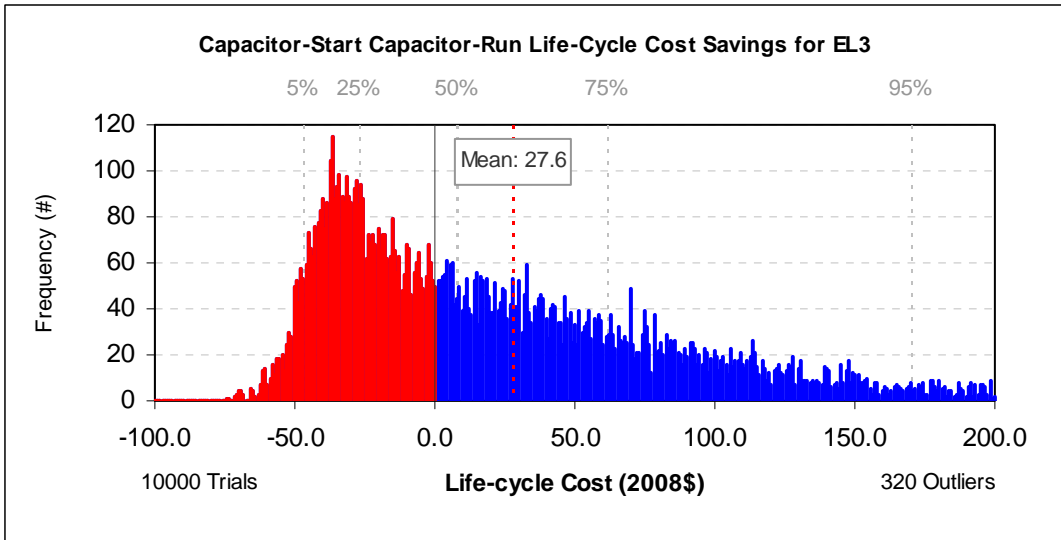
### 8E.2.1.3 Capacitor-Start Capacitor Run Motors



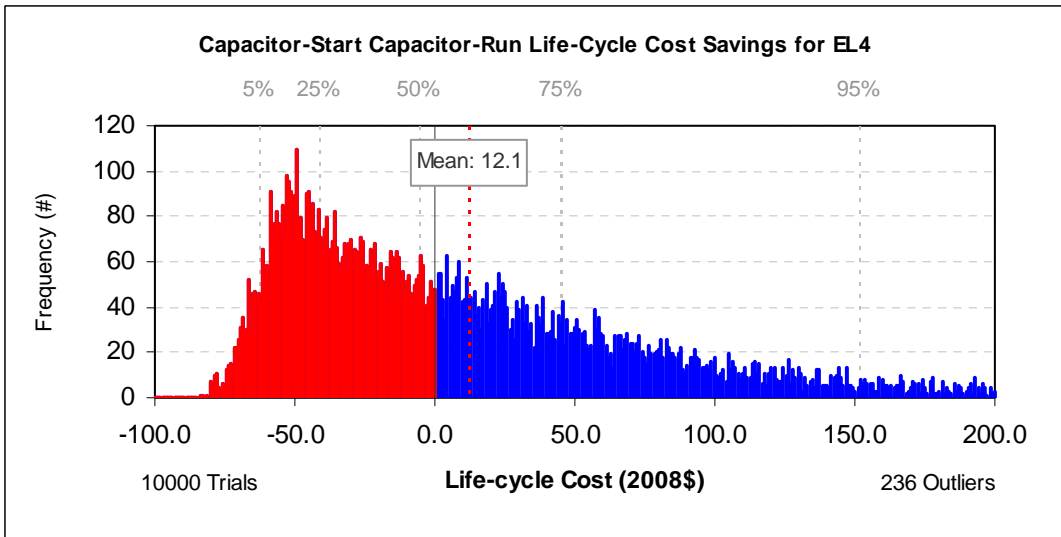
**Figure 8E.2.15** Capacitor-Start Capacitor Run Motors: Distribution of Life-Cycle Cost Impacts for Efficiency Level 1, 7% Discount Rate



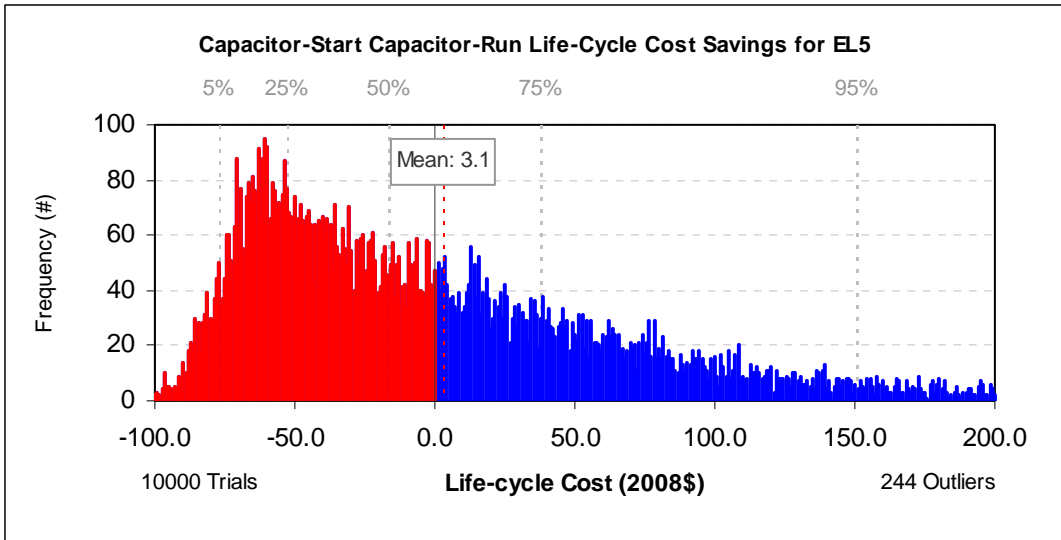
**Figure 8E.2.16** Capacitor-Start Capacitor Run Motors: Distribution of Life-Cycle Cost Impacts for Efficiency Level 2, 7% Discount Rate



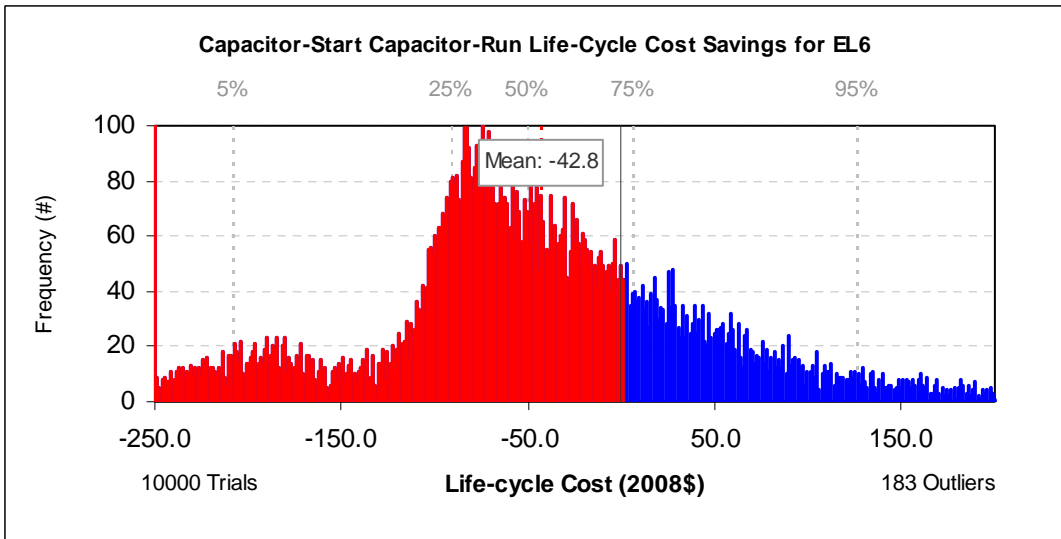
**Figure 8E.2.17 Capacitor-Start Capacitor Run Motors:  
Distribution of Life-Cycle Cost Impacts for  
Efficiency Level 3, 7% Discount Rate**



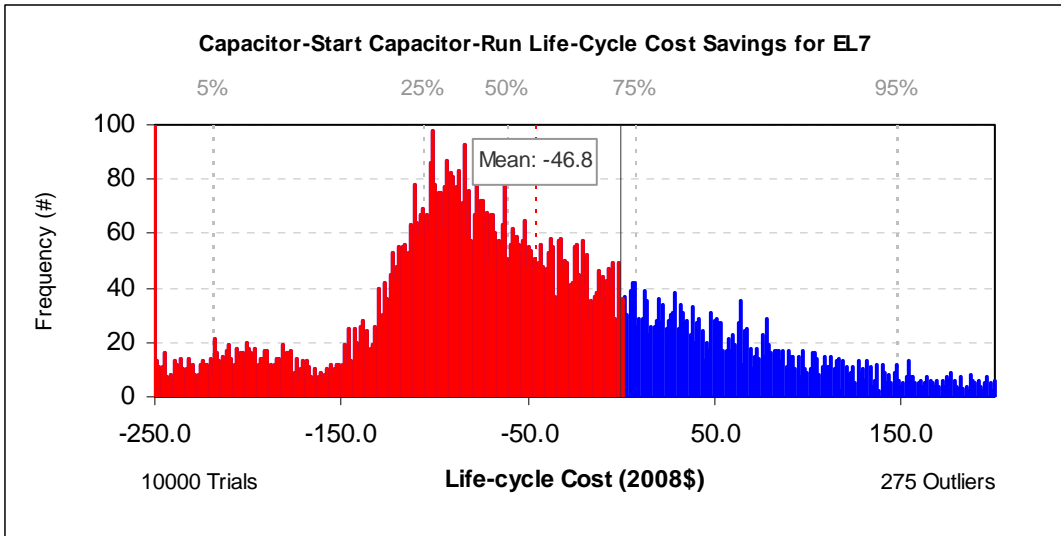
**Figure 8E.2.18 Capacitor-Start Capacitor Run Motors:  
Distribution of Life-Cycle Cost Impacts for  
Efficiency Level 4, 7% Discount Rate**



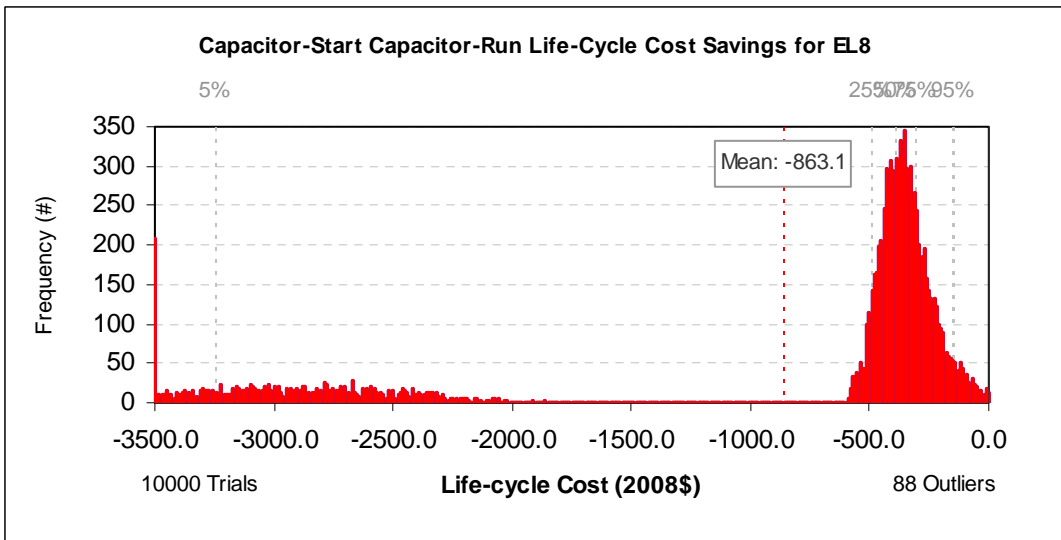
**Figure 8E.2.19 Capacitor-Start Capacitor Run Motors:  
Distribution of Life-Cycle Cost Impacts for  
Efficiency Level 5, 7% Discount Rate**



**Figure 8E.2.20 Capacitor-Start Capacitor Run Motors:  
Distribution of Life-Cycle Cost Impacts for  
Efficiency Level 6, 7% Discount Rate**



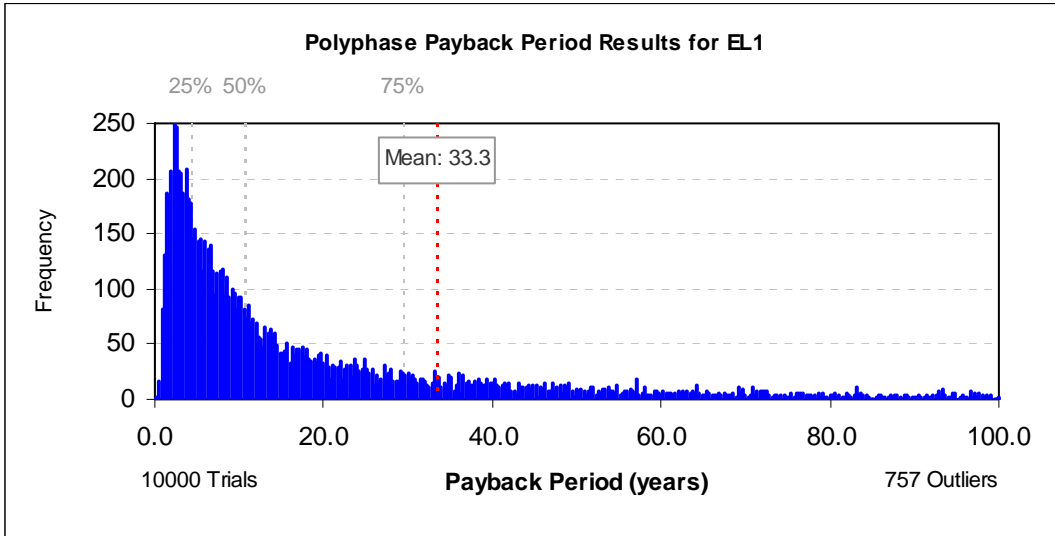
**Figure 8E.2.21 Capacitor-Start Capacitor Run Motors: Distribution of Life-Cycle Cost Impacts for Efficiency Level 7, 7% Discount Rate**



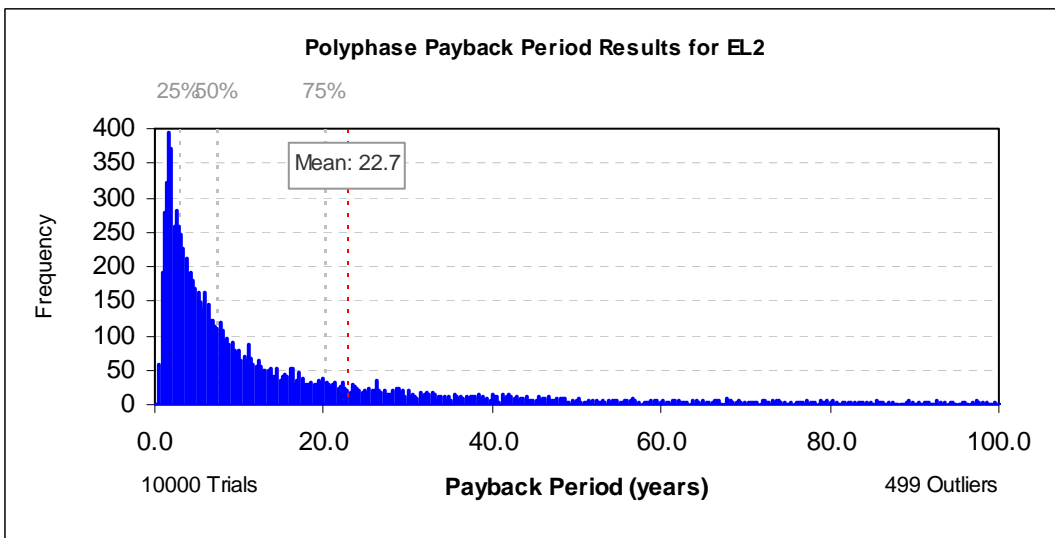
**Figure 8E.2.22 Capacitor-Start Capacitor Run Motors: Distribution of Life-Cycle Cost Impacts for Efficiency Level 8, 7% Discount Rate**

## 8E.2.2 Distribution of Payback Period Results, 7% Discount Rate

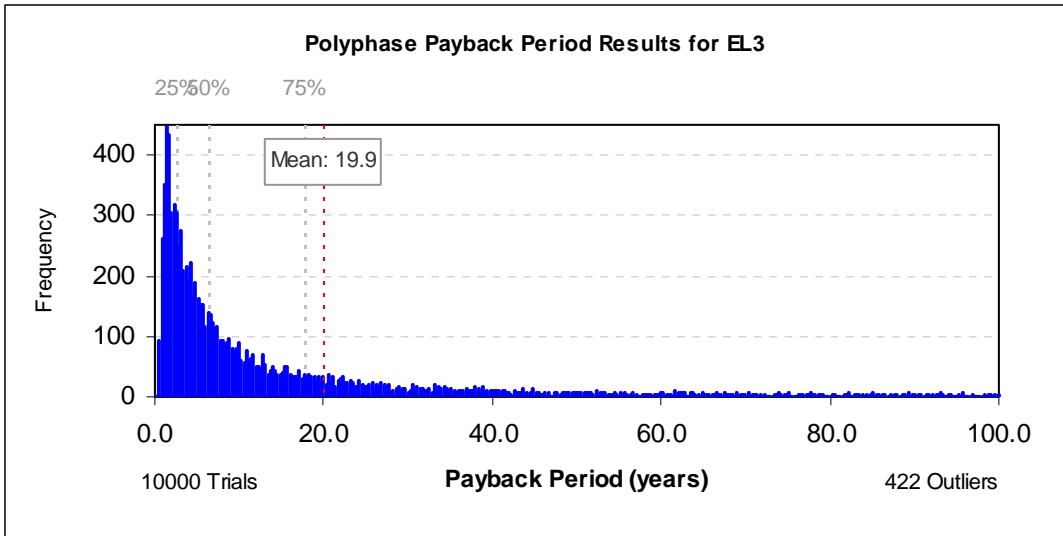
### 8E.2.2.1 Polyphase Motors



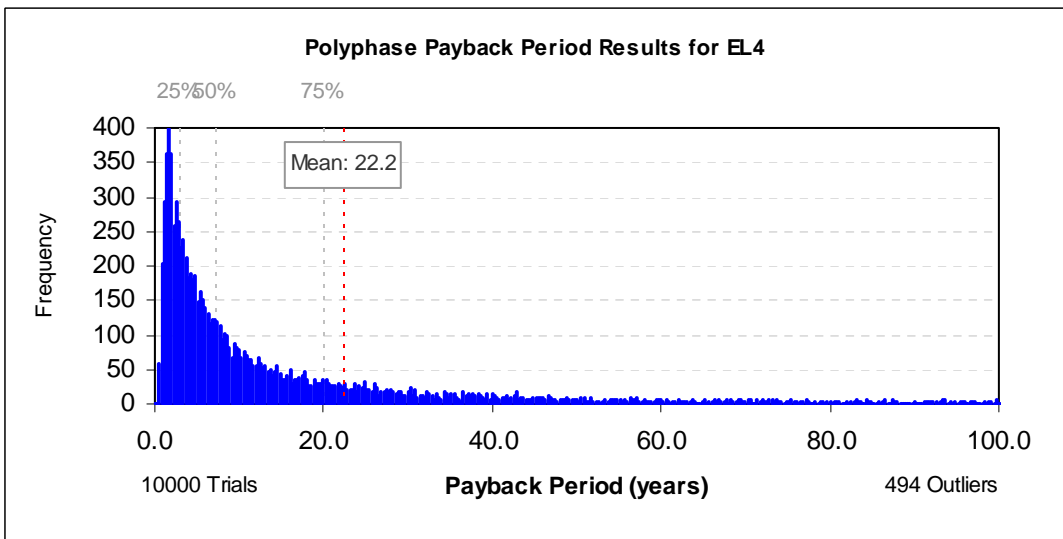
**Figure 8E.2.23 Polyphase Motors: Distribution of Payback Period Impacts for Efficiency Level 1, 7% Discount Rate**



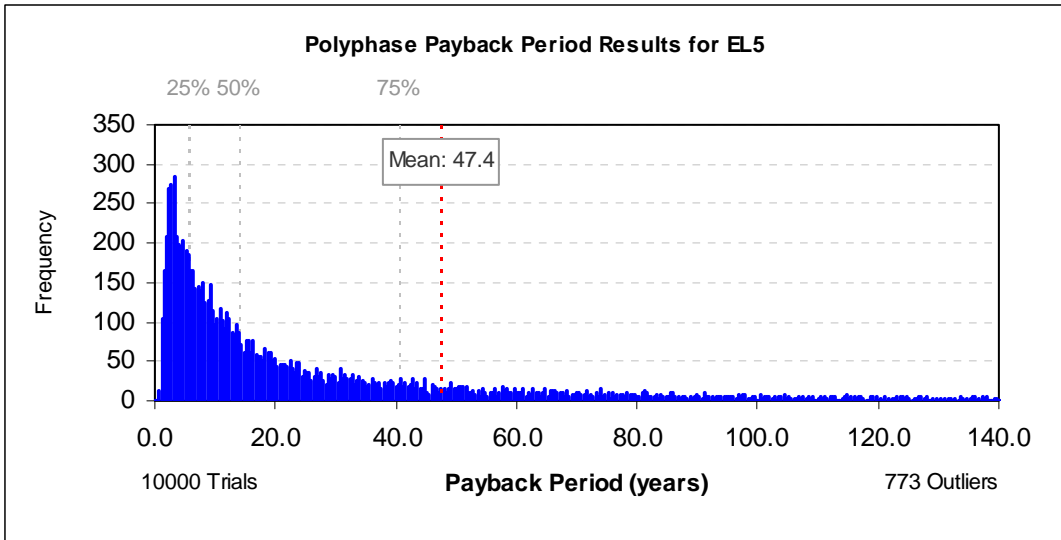
**Figure 8E.2.24 Polyphase Motors: Distribution of Payback Period Impacts for Efficiency Level 2, 7% Discount Rate**



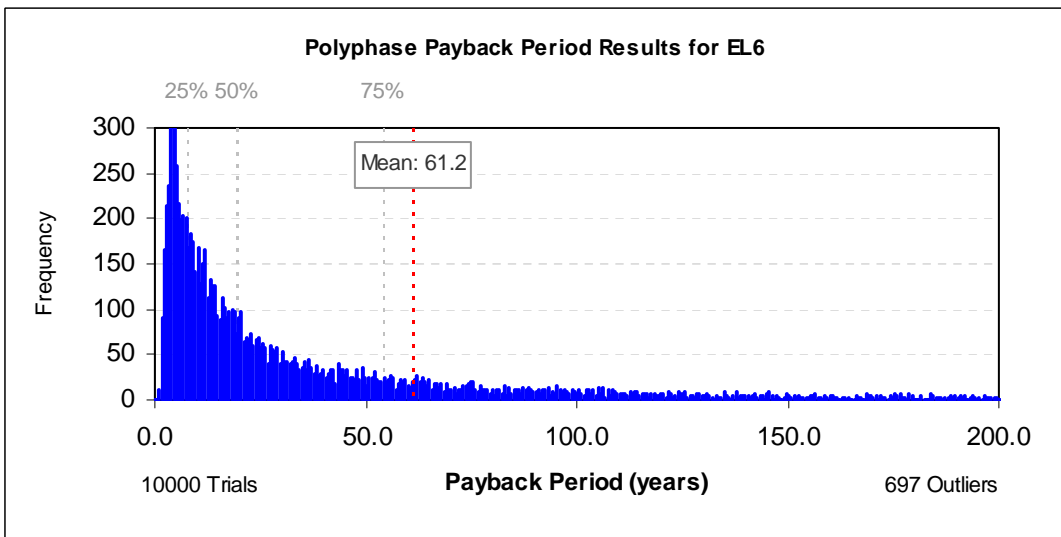
**Figure 8E.2.25 Polyphase Motors: Distribution of Payback Period Impacts for Efficiency Level 3, 7% Discount Rate**



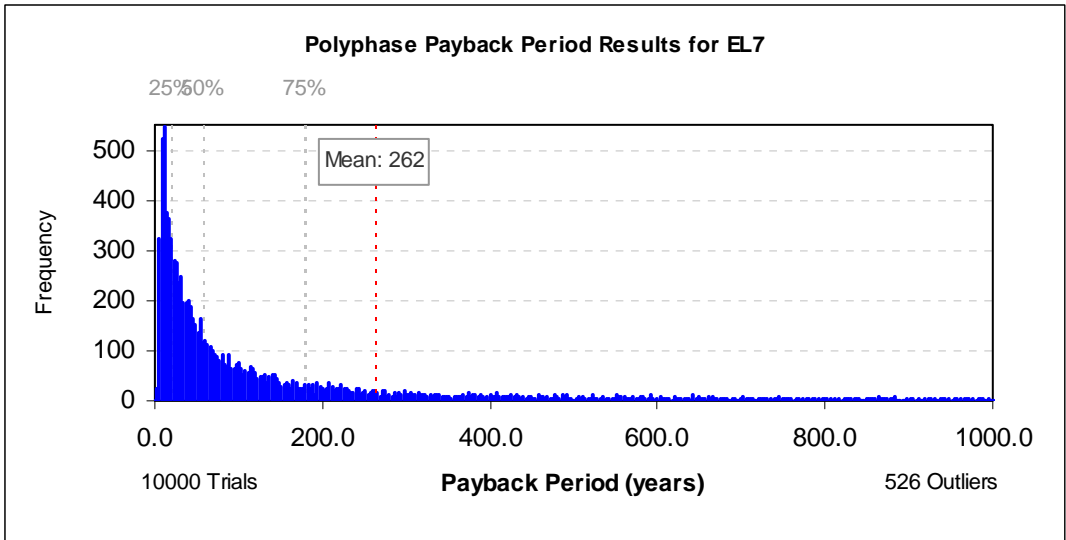
**Figure 8E.2.26 Polyphase Motors: Distribution of Payback Period Impacts for Efficiency Level 4, 7% Discount Rate**



**Figure 8E.2.27 Polyphase Motors: Distribution of Payback Period Impacts for Efficiency Level 5, 7% Discount Rate**

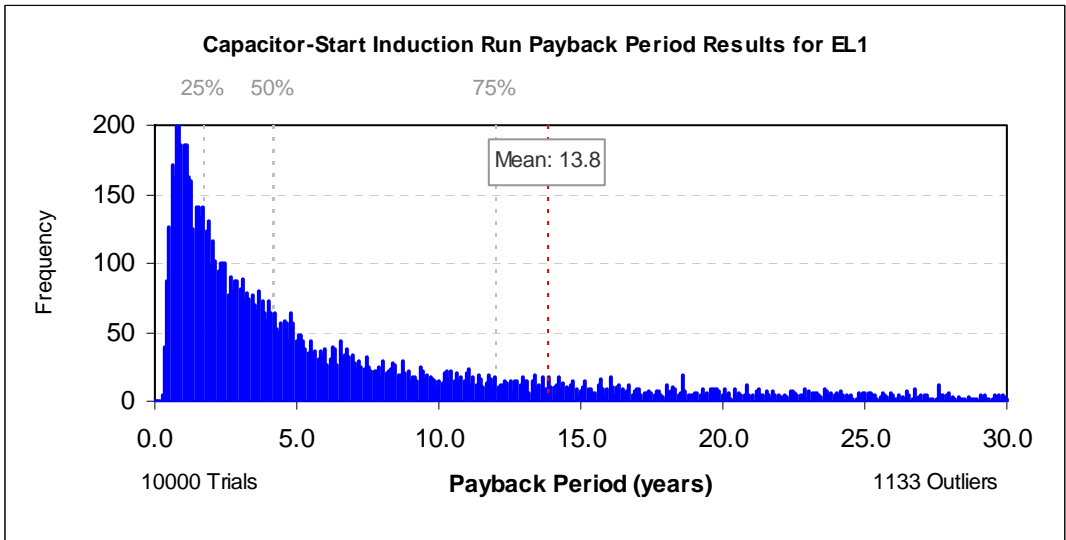


**Figure 8E.2.28 Polyphase Motors: Distribution of Payback Period Impacts for Efficiency Level 6, 7% Discount Rate**

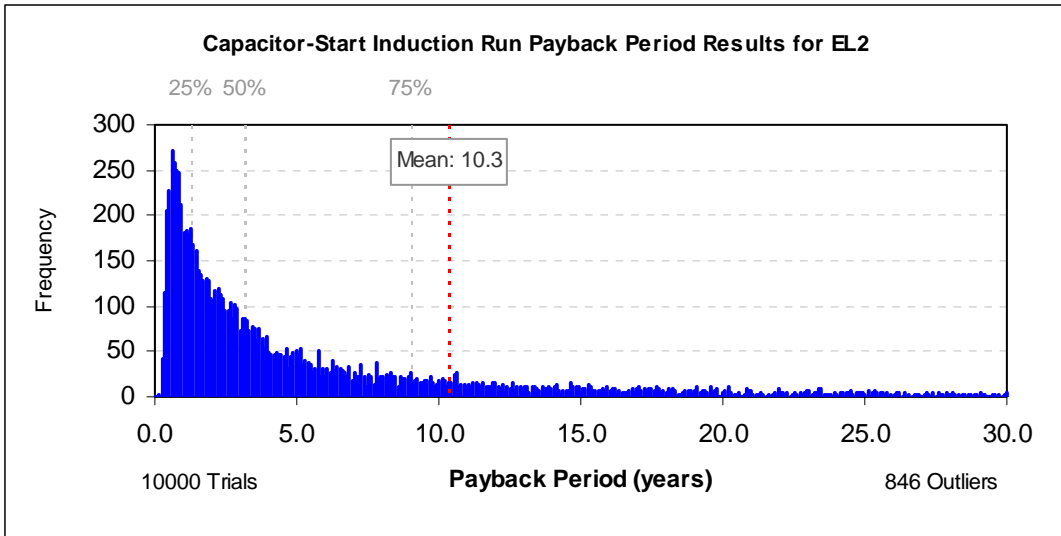


**Figure 8E.2.29 Polyphase Motors: Distribution of Payback Period Impacts for Efficiency Level 7, 7% Discount Rate**

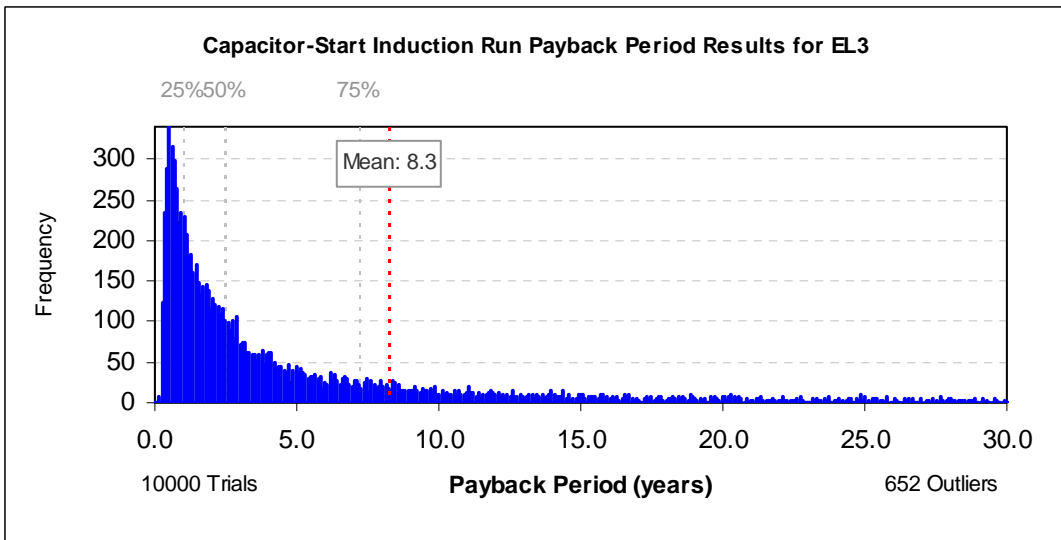
**8E.2.2.2 Capacitor-Start Induction Run Motors**



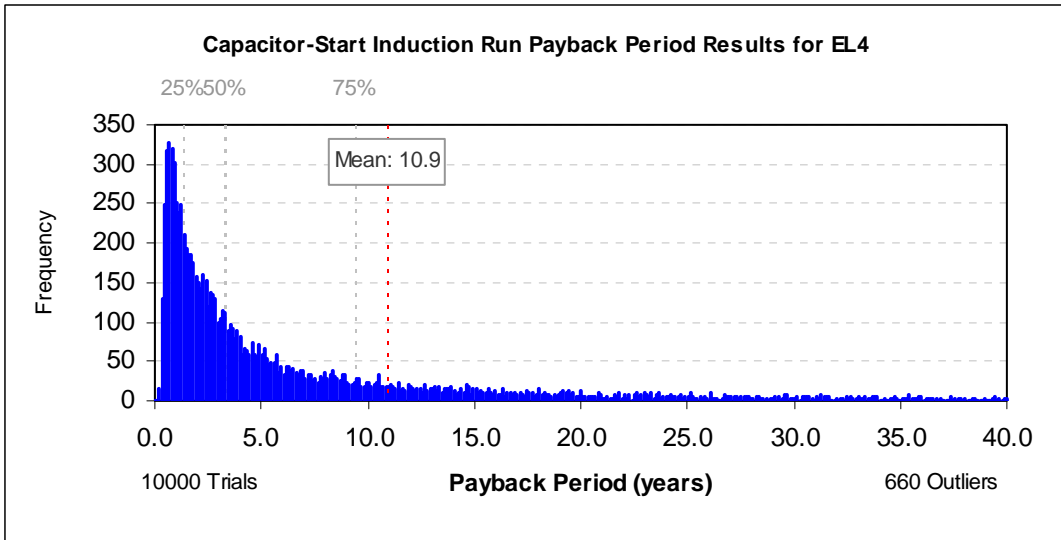
**Figure 8E.2.30 Capacitor-Start Induction Run Motors: Distribution of Payback Period Impacts for Efficiency Level 1, 7% Discount Rate**



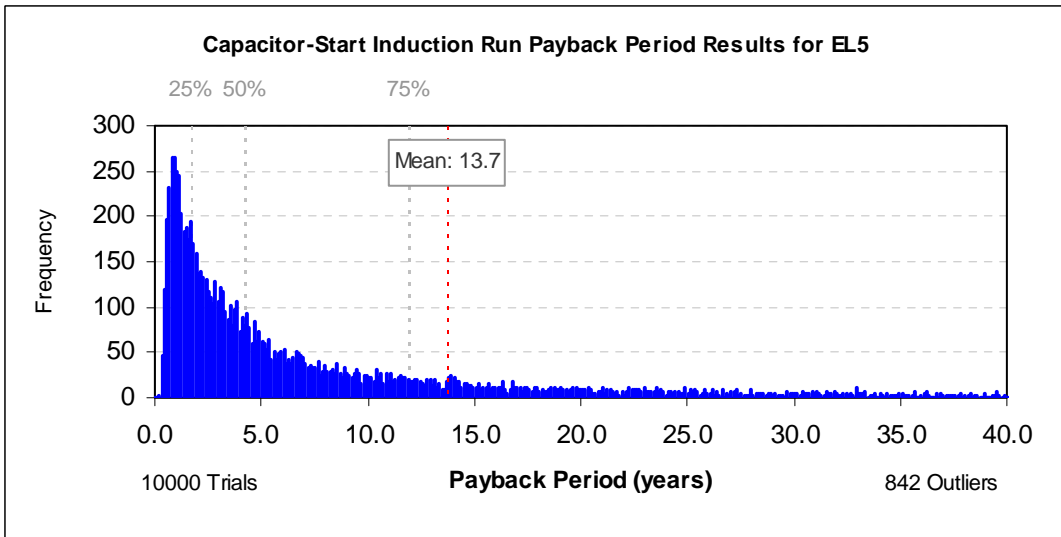
**Figure 8E.2.31 Capacitor-Start Induction Run Motors: Distribution of Payback Period Impacts for Efficiency Level 2, 7% Discount Rate**



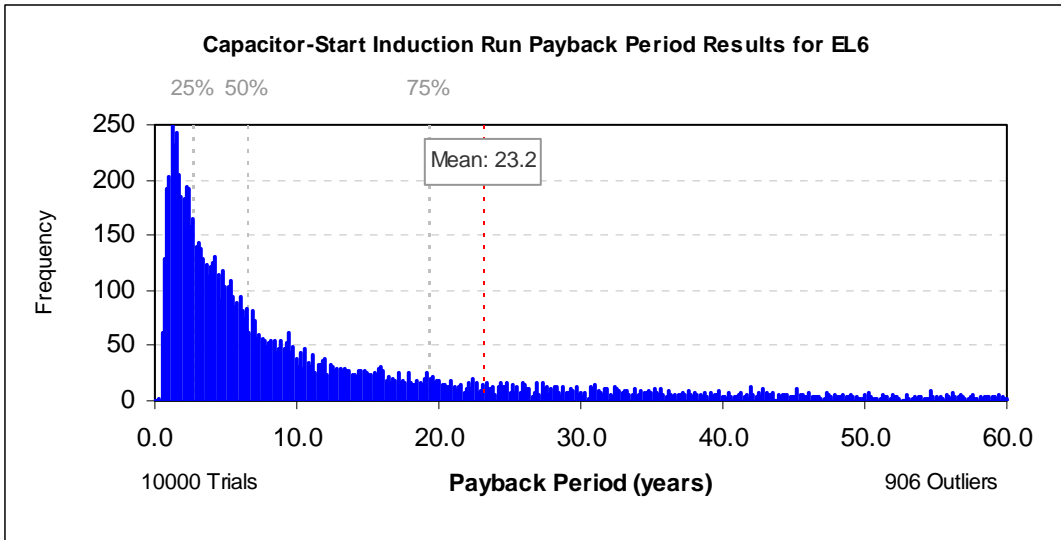
**Figure 8E.2.32 Capacitor-Start Induction Run Motors: Distribution of Payback Period Impacts for Efficiency Level 3, 7% Discount Rate**



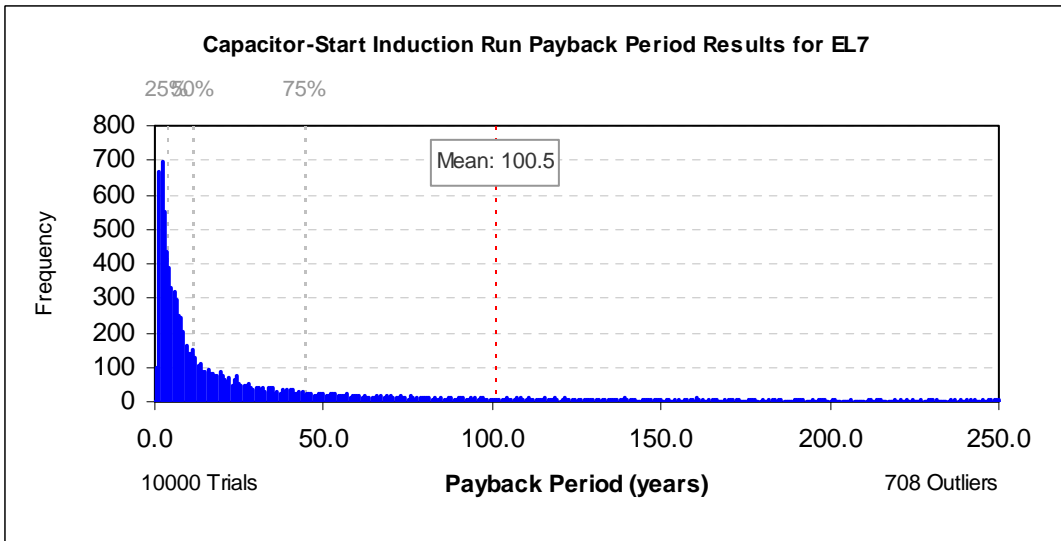
**Figure 8E.2.33 Capacitor-Start Induction Run Motors: Distribution of Payback Period Impacts for Efficiency Level 4, 7% Discount Rate**



**Figure 8E.2.34 Capacitor-Start Induction Run Motors: Distribution of Payback Period Impacts for Efficiency Level 5, 7% Discount Rate**

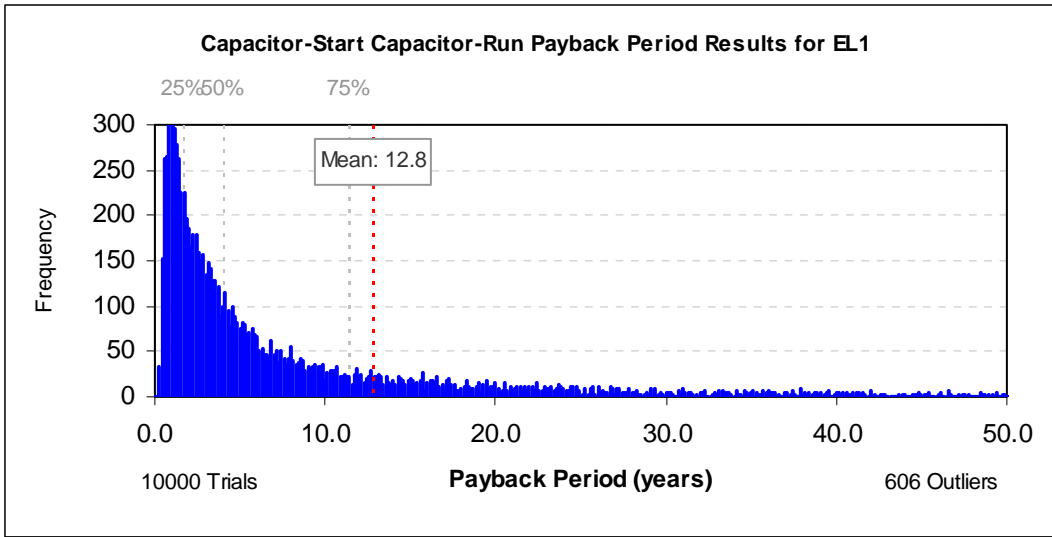


**Figure 8E.2.35 Capacitor-Start Induction Run Motors: Distribution of Payback Period Impacts for Efficiency Level 6, 7% Discount Rate**

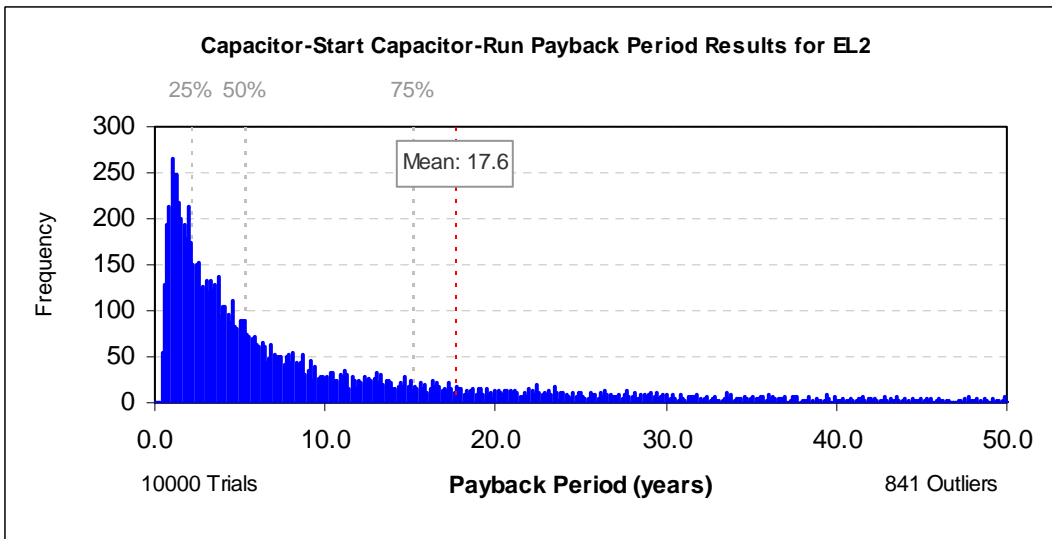


**Figure 8E.2.36 Capacitor-Start Induction Run Motors: Distribution of Payback Period Impacts for Efficiency Level 7, 7% Discount Rate**

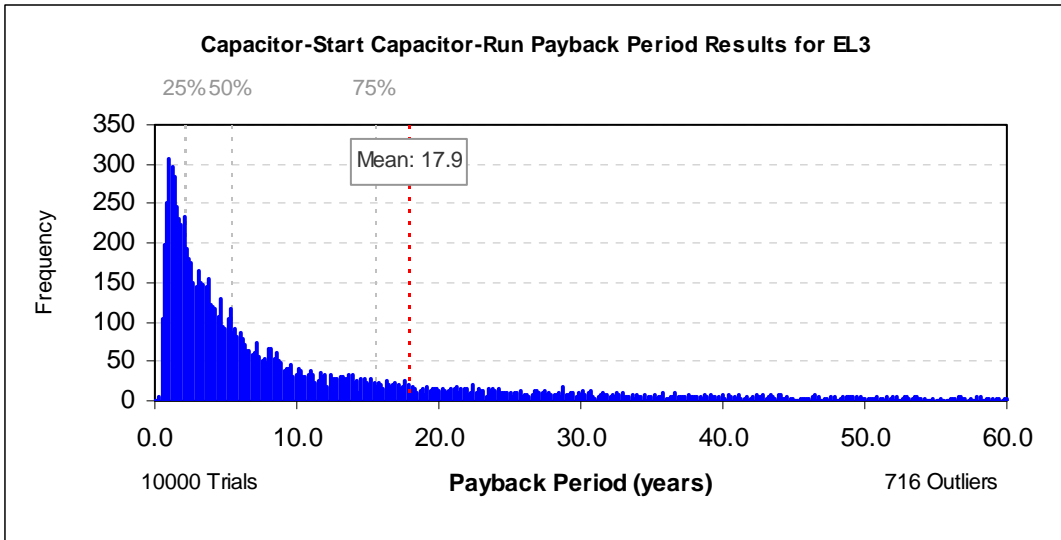
### 8E.2.2.3 Capacitor-Start Capacitor Run Motors



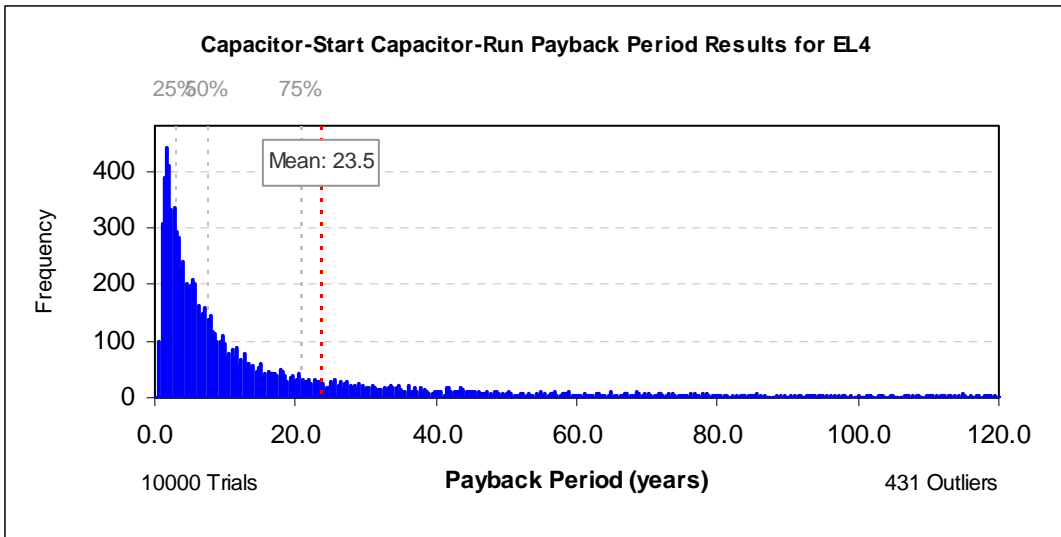
**Figure 8E.2.37 Capacitor-Start Capacitor Run Motors: Distribution of Payback Period Impacts for Efficiency Level 1, 7% Discount Rate**



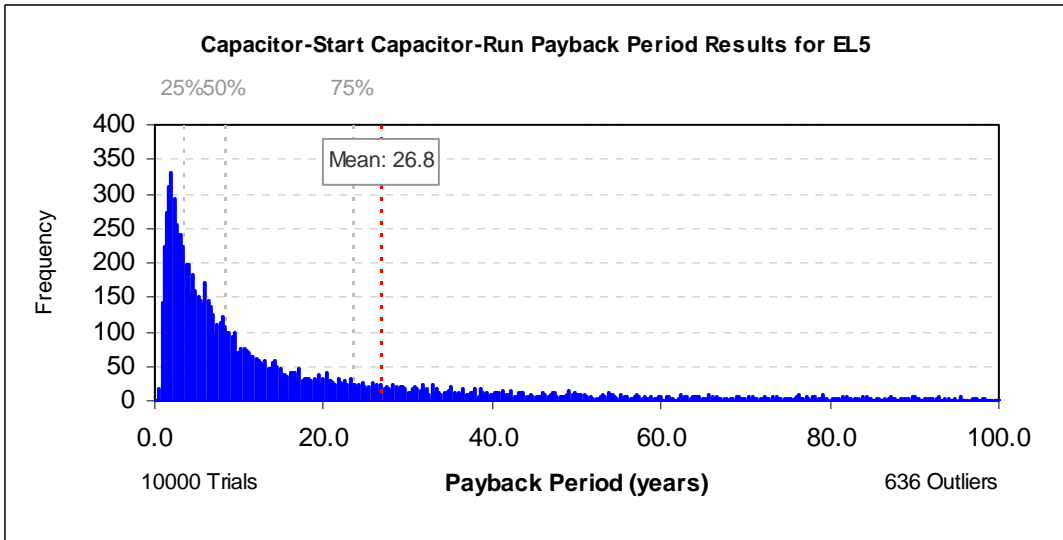
**Figure 8E.2.38 Capacitor-Start Capacitor Run Motors: Distribution of Payback Period Impacts for Efficiency Level 2, 7% Discount Rate**



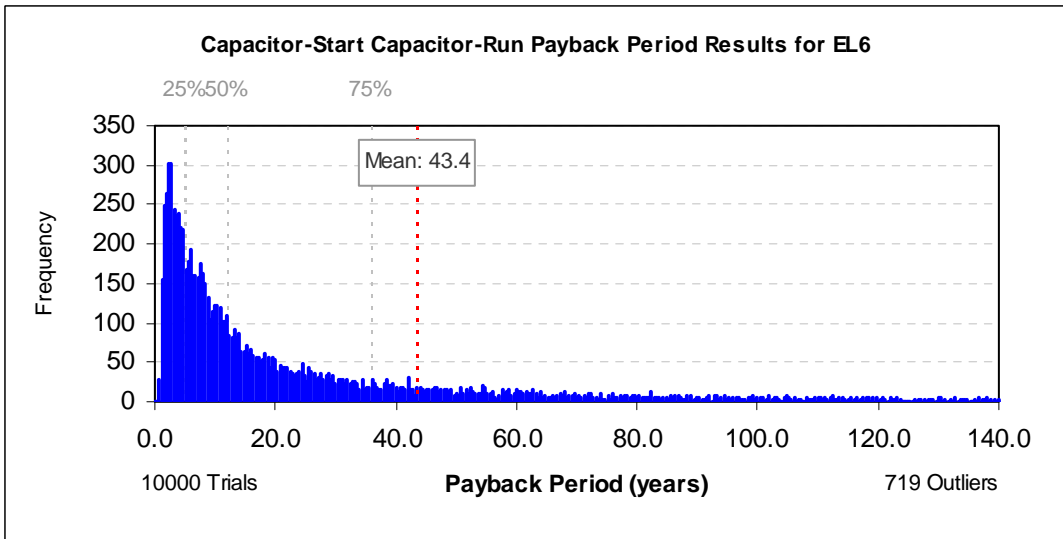
**Figure 8E.2.39 Capacitor-Start Capacitor Run Motors: Distribution of Payback Period Impacts for Efficiency Level 3, 7% Discount Rate**



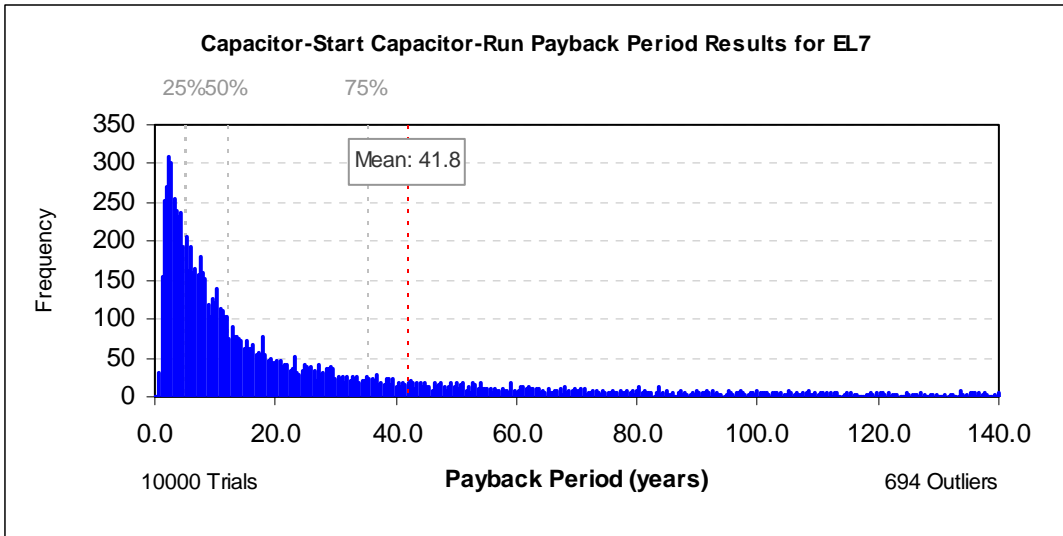
**Figure 8E.2.40 Capacitor-Start Capacitor Run Motors: Distribution of Payback Period Impacts for Efficiency Level 4, 7% Discount Rate**



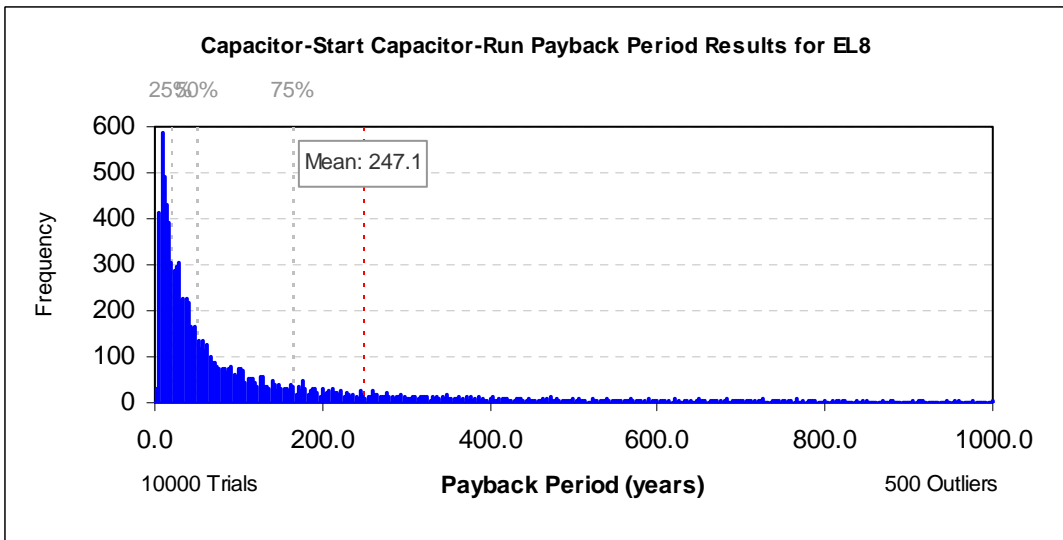
**Figure 8E.2.41 Capacitor-Start Capacitor Run Motors: Distribution of Payback Period Impacts for Efficiency Level 5, 7% Discount Rate**



**Figure 8E.2.42 Capacitor-Start Capacitor Run Motors: Distribution of Payback Period Impacts for Efficiency Level 6, 7% Discount Rate**



**Figure 8E.2.43 Capacitor-Start Capacitor Run Motors:  
Distribution of Payback Period Impacts for  
Efficiency Level 7, 7% Discount Rate**



**Figure 8E.2.44 Capacitor-Start Capacitor Run Motors:  
Distribution of Payback Period Impacts for  
Efficiency Level 8, 7% Discount Rate**