

# Airflow Resistance of Loose-Fill Mineral Fiber Insulations in Retrofit Applications

C.J. Schumacher and M.J. Fox  
*Building Science Laboratories*

J. Lstiburek  
*Building Science Corporation*

February 2015

## NOTICE

This report was prepared as an account of work sponsored by an agency of the United States government. Neither the United States government nor any agency thereof, nor any of their employees, subcontractors, or affiliated partners makes any warranty, express or implied, or assumes any legal liability or responsibility for the accuracy, completeness, or usefulness of any information, apparatus, product, or process disclosed, or represents that its use would not infringe privately owned rights. Reference herein to any specific commercial product, process, or service by trade name, trademark, manufacturer, or otherwise does not necessarily constitute or imply its endorsement, recommendation, or favoring by the United States government or any agency thereof. The views and opinions of authors expressed herein do not necessarily state or reflect those of the United States government or any agency thereof.

Available electronically at <http://www.osti.gov/bridge>

Available for a processing fee to U.S. Department of Energy and its contractors, in paper, from:

U.S. Department of Energy  
Office of Scientific and Technical Information  
P.O. Box 62  
Oak Ridge, TN 37831-0062  
phone: 865.576.8401  
fax: 865.576.5728  
email: <mailto:reports@adonis.osti.gov>

Available for sale to the public, in paper, from:

U.S. Department of Commerce  
National Technical Information Service  
5285 Port Royal Road  
Springfield, VA 22161  
phone: 800.553.6847  
fax: 703.605.6900  
email: [orders@ntis.fedworld.gov](mailto:orders@ntis.fedworld.gov)  
online ordering: <http://www.ntis.gov/ordering.htm>

## **Airflow Resistance of Loose-Fill Mineral Fiber Insulations in Retrofit Applications**

Prepared for:

The National Renewable Energy Laboratory

On behalf of the U.S. Department of Energy's Building America Program

Office of Energy Efficiency and Renewable Energy

15013 Denver West Parkway

Golden, CO 80401

NREL Contract No. DE-AC36-08GO28308

Prepared by:

C.J. Schumacher and M.J. Fox

Building Science Laboratories

167 Lexington Ct., Unit5

Waterloo, ON, Canada

and

J. Lstiburek

Building Science Corporation

3 Lan Drive, Suite 102

Westford, MA 01886

NREL Technical Monitor: Stacey Rothgeb

Prepared under Subcontract No. KNDJ-0-40337-05

February 2015

The work presented in this report does not represent performance of any product relative to regulated minimum efficiency requirements.

The laboratory and/or field sites used for this work are not certified rating test facilities. The conditions and methods under which products were characterized for this work differ from standard rating conditions, as described.

Because the methods and conditions differ, the reported results are not comparable to rated product performance and should only be used to estimate performance under the measured conditions.

## Contents

List of Figures .....	vi
List of Tables .....	vi
Definitions.....	vii
Executive Summary .....	viii
<b>1 Introduction and Background .....</b>	<b>1</b>
1.1 Introduction.....	1
1.2 Background.....	1
1.3 Scope of This Work .....	1
1.4 Material Sample Identification and Collection .....	1
<b>2 Experimental Apparatus and Method.....</b>	<b>3</b>
2.1 Test Wall Assembly.....	3
2.2 Fiber Moving Machine .....	4
2.3 Manufacturer-Recommended Installation Methods and Densities .....	5
2.4 Installation Methods and Densities for Test Wall Specimens .....	9
2.5 Other Experimental Methods.....	10
<b>3 Results and Discussion .....</b>	<b>11</b>
3.1 Test Program.....	11
3.2 General Airflow Test Results.....	11
3.2.1 Long- and Short-Path Airflow Test Results.....	11
3.2.2 Flow Regime and Pressure Range .....	12
3.3 Influence of Material and Installation Method .....	13
3.3.1 Material O .....	13
3.3.2 Material P.....	14
3.3.3 Material Q.....	15
3.3.4 Material R .....	16
3.3.5 Installation Methods .....	17
<b>4 Conclusions and Recommendations .....</b>	<b>19</b>
<b>Appendix A: Loose-Fill Fiberglass Insulation Products for Dense-Pack Retrofit Applications .....</b>	<b>21</b>
<b>Appendix B: Loose-Fill Stone Wool Insulation Products (Not Intended for Dense-Pack Retrofit Applications).....</b>	<b>77</b>
<b>Appendix C: Example of Dense-Packing Instructions From a Cellulose Insulation Manufacturer..</b>	<b>89</b>

## List of Figures

Figure 1. Schematic of airflow paths through test wall assembly .....	3
Figure 2. InsulMaxx 2000 all fiber machine (left) with double agitators (right) .....	4
Figure 3. Flow exponents for all MFI tests .....	13
Figure 4. Flow exponents for previous CFI tests.....	13
Figure 5. Material O: long-path airflow rest results versus installed density and installation method.....	14
Figure 6. Material P: long-path airflow rest results versus installed density and installation method.....	15
Figure 7. Material Q: long-path airflow rest results versus installed density and installation method.....	16
Figure 8. Material R: long-path airflow rest results versus installed density and installation method.....	17

*Unless otherwise noted, all figures were created by Building Science Corporation.*

## List of Tables

Table 1. Survey of Dense-Pack and Retrofit Information for Loose-Fill Fiberglass Products .....	6
Table 2. Survey of Machine and Hose Recommendations for Dense-Pack and Retrofit Applications Using Loose-Fill Fiberglass Products .....	7
Table 3. Survey of Recommended Dense-Pack and Retrofit Techniques for Loose-Fill Fiberglass Products .....	8
Table 4. Summary of Mineral Fiber Test Results With Comparison to Previous Cellulose Tests....	11

*Unless otherwise noted, all tables were created by Building Science Corporation.*

## Definitions

BPI	Building Performance Institute
CFI	Cellulose fiber insulation
cfm	Cubic feet per minute
ft <sup>2</sup>	Square foot
ft <sup>3</sup>	Cubic foot
ID	Inside diameter
MFI	Mineral fiber insulation
pcf	Pounds per cubic foot
psi	Pounds per square inch
scfh	Standard cubic feet per hour

## Executive Summary

In 2011, Building Science Corporation, working under the Building America Program, completed research to support the development of standards for testing the airflow resistance of insulation materials used in dense-pack retrofit applications. Building America Report 1109, *High Impact Project: Support of Standards Development – Dense-pack Airflow Resistance, Final Research Report*, provides a detailed summary of the research program, including a summary of airflow resistance test results for 10 cellulose fiber insulation materials. Recently, mineral fiber insulation (MFI) materials (glass fiber, stone wool, etc.) have also been developed and/or suggested for dense-pack retrofit applications. Testing is needed to support the inclusion of MFI in new dense-pack air resistance standards.

This report expands on Building America Report 1109 by applying the experimental apparatus and test method to dense-pack retrofit applications using MFI materials. Three fiberglass insulation materials and one stone wool insulation material were tested, and the results compared to the cellulose results from the previous study. Test wall specimens were prepared to cover densities in the range of roughly 1.8–2.5 pcf. Three installation methods were tested, based on a survey of installation instructions provided by a sample of five fiberglass manufacturers: (1) bottom fill, using an insertion tube installed up through a hole at approximately 24 in. above the bottom plate; (2) top fill, using an insertion tube installed down through a hole at approximately 6 in. below the top plates; and (3) 2-in. nozzle, installed through two or three holes (e.g., at holes approximately 24 in., 72 in., and 90 in. above the bottom plate).

Airflow resistance varied significantly between loose-fill fiberglass products, even though all the compared products are marketed and supported for use in dense-pack retrofit applications. When these fiberglass products were installed at approximately 2.2 pcf, the variance was 0.33–1.73  $\text{cfm}_{50}/\text{ft}^2$ . The distribution of the installed material, and thus the airflow resistance, also depend on installation method.

Two of the three loose-fill fiberglass products tested (installed at approximately 2.3 pcf) produced long-path flow rates of 0.28 and 0.42  $\text{cfm}_{50}/\text{ft}^2$  and short-path airflow rates of 0.76 and 1.1  $\text{cfm}_{50}/\text{ft}^2$ . These are comparable to the cellulose dense-pack retrofits benchmarks of 0.33 and 1.0  $\text{cfm}_{50}/\text{ft}^2$  for the long- and short-path airflow rates, respectively (cellulose fiber insulation installed at 3.5 pcf as required by Building Performance Institute). However, the fiberglass test walls were prepared using the 2-in. nozzle installation method, not the insertion tube methods recommended as best practice for retrofit applications. These results indicate a potential for dense-pack applications of MFI, but more work needs to be done to develop appropriate standards for real-world installation needs. In particular, further testing should be conducted to establish recommended install densities for insertion tube installation methods.

None of the stone wool manufacturers support dense-pack retrofit applications using their products. As a result, only one loose-fill stone wool insulation product was collected for testing. The stone wool fibers and nodules were too large to successfully install using either of the insertion tube techniques. Loose-fill stone wool is not recommended for dense-pack retrofit applications.



# 1 Introduction and Background

## 1.1 Introduction

This report documents airflow resistance test results for dense-pack retrofit applications using mineral fiber insulation (MFI) materials (i.e., glass fiber and stone wool). The test results are compared to previous airflow resistance tests for dense-pack retrofit applications using 10 different cellulose fiber insulation (CFI) materials.

## 1.2 Background

In the early 1980s, researchers acknowledged and studied the airflow resistance of dense-pack CFI in materials in retrofit applications (EDU 1986). In 2011, Building Science Corporation (BSC), working under the Building America Program, completed research work to support the development of standards for testing the airflow resistance of insulation materials used in dense-pack retrofit applications. Building America Report 1109, *High Impact Project: Support of Standards Development – Dense-pack Airflow Resistance, Final Research Report*, provides a detailed summary of the research program, including the test apparatus and method that were developed (Schumacher 2011). The same report also provides a summary of airflow resistance test results for 10 CFI materials.

More recently, MFI materials (glass fiber, stone wool, etc.) have been developed and/or suggested for dense-pack retrofit applications. Research is needed to develop standards for airflow resistance for these new materials. More specifically, testing is needed to support the development of two new standards by the Building Performance Institute (BPI): BPI-102, which will set requirements for the airflow resistance of insulation used in retrofit cavity (dense-pack) installations, and BPI-103, which will define acceptable test methods to measure the airflow resistance of insulation materials used in dense-pack applications.

## 1.3 Scope of This Work

This report documents airflow resistance test results for three fiberglass insulation materials and one stone wool insulation material.

## 1.4 Material Sample Identification and Collection

Suitable mineral insulation materials were identified through discussion with weatherization industry practitioners, a review of literature from trade publications and online sources, and through discussion with a manufacturer experts' panel from the North American Insulation Manufacturers Association.

To begin sample selection, five fiberglass insulation materials were identified as intended for and/or used in retrofit wall applications:

- Certaineed's Optima
- Guardian's CWI Plus
- Johns Manville's Spider
- Knauf's EcoFill-WX
- Owens Corning's ProPink L77.

BSC collected six or more sample bags of each fiberglass retrofit product from the respective manufacturers. Appendix A includes manufacturer's literature for each of the products. Three fiberglass products were randomly selected from the five products collected.

Four stone wool insulation manufacturers produce granular/loose-fill products in North America; however, none of these are intended for or (to the best of BSC's knowledge) used in retrofit wall applications:

- Amerrock's RockWool Premium Plus
- Rolan's Fibra Mineral Nodular
- Roxul's Rockfill
- Thermafiber's Spray Wool (one of many Granulated Products).

The stone wool insulation manufacturers were less interested in providing samples, emphasizing that their products were not developed for or supported if used in dense-pack retrofits in residential applications. BSC was able to collect sample bags from only one of the stone wool insulation manufacturers. To maintain anonymity, BSC will not identify the stone wool sample that they were able to collect and test. Appendix B includes manufacturer's literature for each of the products.

## 2 Experimental Apparatus and Method

The dense-pack mineral fiber tests were performed using the same apparatus and method that were developed for the dense-pack cellulose fiber tests described by Schumacher (2011). The calibration box, electronic scale, test wall assembly, wall balance, and load cell were the same as those used for the cellulose testing in 2011. Only the fiber moving machine and installation methods were changed.

### 2.1 Test Wall Assembly

Figure 1 shows the test wall assembly and the two flow paths that are evaluated during testing: the short- and long-flow paths. A fan depressurizes the wall assembly so air is drawn in through the air inlet holes in the back panel. The top and bottom inlet holes are used for long path tests; the upper and lower inlet holes are used for short-path tests. The air travels through the dense-packed insulation and out of the wall assembly at the air outlet slot that is located at mid-height on the front panel. The outlet air is collected in a manifold and drawn through a series of flow measurement devices before traveling through the fan and being expelled to the laboratory. This arrangement maximizes the uniformity of airflow, pressures, and temperatures.

A background leakage test is conducted with the top, bottom, upper and lower inlet holes sealed. The top and bottom holes are opened to produce two 45 ¼-in. long-flow paths. The top and bottom holes are then resealed and the upper and lower holes are opened to produce two 16-in. short-flow paths.

Airflow rates are reported in  $\text{cfm}_{50}/\text{ft}^2$  where the area is perpendicular to the flow path. Each test involves flow paths up through three stud spaces and down through three stud spaces so the total flow area is  $6 \times (3.5 \times 14.5 \text{ in.}) = 304.5 \text{ in.}^2$ .

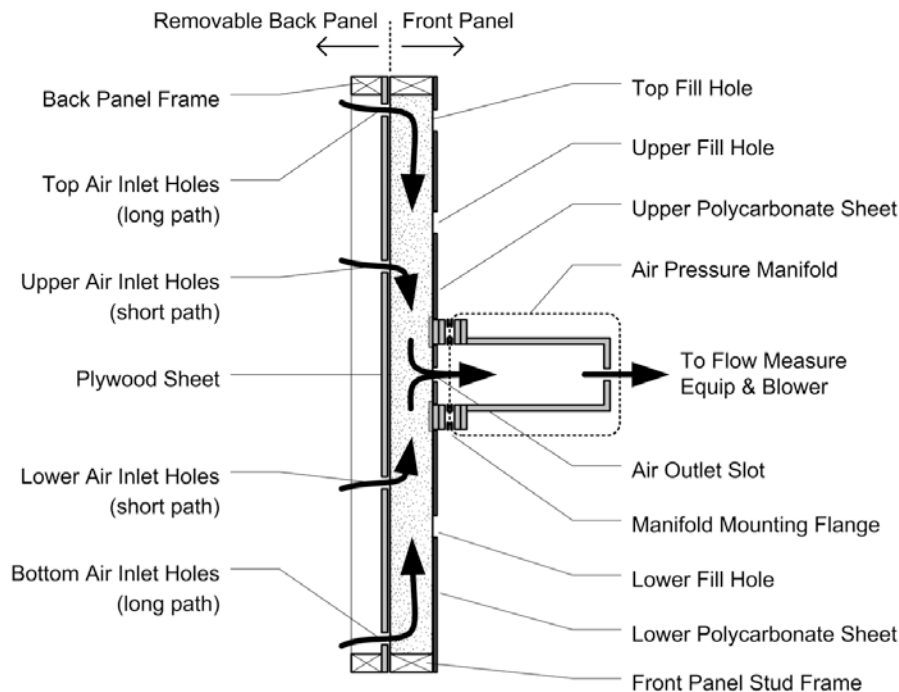


Figure 1. Schematic of airflow paths through test wall assembly

The installed density is measured with an uncertainty of  $\pm 1\%$  or  $\pm 0.035$  pcf. Air pressures are measured using an auto-zeroing digital manometer having a measurement accuracy of  $\pm 1\%$  of reading. Flow rates are measured using rotometers having uncertainty of  $\pm 2\%$  of reading and capable of measuring flow rates down to  $5 \pm -0.6$  scfh.

Schumacher (2011) provides more detailed explanation of the apparatus, test method, and uncertainty.

## 2.2 Fiber Moving Machine

A Krendl Model 450A All-Fiber Machine was used to prepare the cellulose fiber test wall specimens that Schumacher (2011) described. Several fiberglass test wall specimens had been prepared using this machine in 2011; however, the Krendl 450A did not have appropriate mixing paddles and shredders to properly condition the fiberglass material for dense-pack applications.

For the purposes of the mineral fiber dense-pack tests, BSC sought to identify and secure a single machine that could be used for all planned tests. The team approached members of a manufacturer experts' panel from the North American Insulation Manufacturers Association for input, and all agreed that the following small (i.e., portable, not truck-mount) machines were appropriate for dense-packing fiberglass insulation:

- Accu1 9100 series
- Intec Force 3
- Krendl Model 425 or 475
- Spray Insulation Components InsulMaxx 2000 or 4000.

A brand new InsulMaxx 2000 machine, pictured in Figure 2, was secured for the preparation of fiberglass and stone wool test wall specimens. The InsulMaxx 2000 has a variable-speed blower, and double agitators (one set of shredders and one set of mixing paddles) suitable for conditioning fiberglass loose-fill products.



Figure 2. InsulMaxx 2000 all fiber machine (left) with double agitators (right)

### 2.3 Manufacturer-Recommended Installation Methods and Densities

Cellulose insulation manufacturers provide few, if any, special instructions for installing their products in dense-pack retrofit applications. The installation instructions generally reflect those of BPI's Insulation and Airsealing Technician certification course. These requirements were summarized by Schumacher (2011). Appendix C of this report provides an example of one cellulose manufacturer's instructions for installing its product in a dense-pack retrofit application.

Fiberglass manufacturers, similarly, provide relatively little instruction for dense-pack retrofits. Table 1 provides a survey of the installation instructions and fill tables/coverage charts for each of the five loose-fill fiberglass insulation materials collected. The survey considered information on the product packaging and information readily available in the manufacturers' dense-pack and weatherization/retrofit literature. Table 2 provides a survey of the machine and hose recommendations for each of the five fiberglass materials. Finally, Table 3 provides a survey of the recommended installation methods/techniques for dense-pack and retrofit applications.

Only one of the five fiberglass products had packaging that included a dense-pack fill table. One other provided a fill table for "closed cavities that are compression filled," which implies dense-pack application. For these two products the package-recommended dense-pack install densities were 2.2 and 1.8 pcf, respectively. The other packages provided recommended install densities of 1.0–1.8 pcf for "closed cavities."

Where dense-pack installation instructions and fill tables are not provided on the packaging, it is reasonable for installers to seek this information online and from their local suppliers. References to dense-pack applications were found in the general documentation for four of the five products. Most documentation contained statements about the ability to dense pack to a certain density. Some documents said to install to "a minimum of" 2.5 pcf; others said install "up to" 2.5 pcf. Yet others suggested a range of dense-pack install densities (e.g., 1.8–2.6 pcf). In several cases, the recommended dense-pack install densities from the packages did not agree with the separate documentation.

Through discussions with installers, BSC found that some are using installation instructions and fill tables from manufacturers' weatherization and retrofit documentation. This documentation provides a third set of install densities that often contradict the information on the packaging and in other literature for the same product. The weatherization and retrofit documentation, where available, suggests install densities of 1.3–1.8 pcf for one product, 1.6 pcf for another. A third product, Knauf EcoFill Wx, instructs weatherization installers to use dense-pack methods and fill to 2.2 pcf.

Loose-fill fiberglass insulation products perform differently from cellulose insulation products. Fiberglass products are expected to have dense-pack install densities that are different from and lower than those for cellulose materials. Furthermore, there may be a range of dense-pack install densities for different fiberglass products.

**Table 1. Survey of Dense-Pack and Retrofit Information for Loose-Fill Fiberglass Products**

Manufacturer	Certainteed	Guardian	Johns Manville	Knauf	Owens Corning
Product	Optima	CWI Plus	Spider	EcoFill Wx	ProPink L77
<b>Package Information</b>					
Dense-Pack Instructions?	No		No	Yes	No
Dense-Pack Fill Table?	Yes <sup>1</sup>	Unknown <sup>2</sup>	No <sup>3</sup>	Yes <sup>4</sup>	
Install Density	1.8 pcf “compression filled closed cavities”		1.0–1.8 pcf “spray applied and [Blown-In Batt System] BIBS”	2.2 pcf “cavity wall”	1.3–1.8 pcf “enclosed cavity”
<b>Dense-Pack Documentation</b>					
Instructions/Fill Tables On-Line	Yes	Yes	Yes	Yes	Partial
Document(s)	Insulsafe SP/Optima Dense-Pack Sell Sheet	CWI Plus Technical Install Guide	Spider Dense-Pack Sell Sheet; Spec Sheet	EcoFill WX Fact Sheet	ProPick L77 Loose-Fill Brochure; Sell Sheet
Install Density	Min. 2.5 pcf “dense-pack”	2.2 pcf “dense-pack”	1.8–2.6 pcf “dense-pack”	2.2 pcf “dense-pack”	“up to” 2.5 pcf “dense-pack”
<b>Weatherization/Retrofit Documentation</b>					
Instructions/Fill Tables On-Line	Yes	None Found	None Found	Yes	Yes
Document(S)	Optima Sidewall Reinsulation Spec Sheet			EcoFill WX Data sheet (BW-DS-08);	ProPick L77 Loose Fill Insulation Fact Sheet
Install Density	1.6 pcf “sidewall re-insulation”			2.2 pcf “cavity wall”	1.3 - 1.8 pcf “closed cavity wall”

<sup>1</sup> Certainteed Optima packaging provides a coverage chart only for “closed cavities that are compression filled.”

<sup>2</sup> Guardian CWI Plus product packaging was unavailable at time of testing; correct product was provided in European Union packaging; North American package information unknown.

<sup>3</sup> JM Spider packaging provides instructions and tables for Blown-In Batt System applications; weatherization contractors familiar with cellulose often consider netted installations (such as Blown-In Batt System) to employ dense-pack techniques and densities.

<sup>4</sup> Knauf EcoFill WX package provides machine settings for dense-pack and a fill table for “Cavity Wall Application.”

**Table 2. Survey of Machine and Hose Recommendations for Dense-Pack and Retrofit Applications Using Loose-Fill Fiberglass Products**

Manufacturer	Certainteed	Guardian	Johns Manville	Knauf	Owens Corning
Product	Optima	CWI Plus	Spider	EcoFill Wx	ProPink L77
<b>Blowing Machine Recommendations</b>					
<b>General Requirements</b>	Fiber agitation and conditioning with pressure control	Stewart 1000, 750, 500, and 350; InsulMaxx 5000, 4000, and 2000; Force/2, Force/3, and Wasp; Krendl 1000, 1300, 2000, 2300	None provided	Example Machines: Large: Volumatic III Medium: Krendl 2300 Small: Force II and WASP	None provided
<b>Speed</b>	Per machine manufacturer's recommendations				
<b>Slide Gate</b>	1/3–1/2 open	75% of position for a "typical attic job"		4–4.5 in. open	
<b>Air Pressure @ End of Hose or Insertion Tube</b>	2–2.4 psi 55–66 in. H2O			2 psi 55 in. H2O	
<b>Acceptable Feed Rate</b>				5–35 lb/min	
<b>Blowing Hose Recommendations</b>					
<b>General Requirements</b>	Internally corrugated with smooth transition reducers		None Provided	Min. 1/4 in. internal corrugations	None Provided
<b>1st Section</b>	Min. 100 ft of 2.5 in. ID*	Min. 50 ft of 2.5 in. ID		Min. 150 ft	
<b>2nd Section</b>	50 ft of 2 in. ID	50 ft of 2 in. ID			
<b>3rd Section</b>	10–25 ft of 1.5 in. ID	Min. 10 ft of 1.5 in. ID			
<b>Insert Tube</b>	10 ft of 1.25–1.5 in. ID	10 ft of 1–1.5 in. ID		Min. 1 in. ID	

\* Inside diameter

**Table 3. Survey of Recommended Dense-Pack and Retrofit Techniques for Loose-Fill Fiberglass Products**

<b>Manufacturer</b>	<b>Certainteed</b>	<b>Guardian</b>	<b>Johns Manville</b>	<b>Knauf</b>	<b>Owens Corning</b>
<b>Product</b>	<b>Optima</b>	<b>CWI Plus</b>	<b>Spider</b>	<b>EcoFill Wx</b>	<b>ProPink L77</b>
<b>Dense-Pack Techniques</b>					
<b>Preferred</b>	Insertion tube upward through 1 lower hole	Insertion tube upward through 1 lower hole	None provided	None provided	None provided
<b>Alternative 1</b>	Insertion tube downward through 1 top hole	Insertion tube downward through 1 top hole			
<b>Alternative 2</b>	Insertion tube through 2 holes: upper and lower	Nozzle through 3 holes (drill and fill)			
<b>Retrofit Techniques</b>					
<b>Method 1</b>	Directional nozzle through at least two holes: 3 ft above bottom + 2 ft below top	None provided	None provided	None provided	None provided
<b>Method 2</b>	Insertion tube through hole at mid-height				



Only one of the five materials collected had consistent instructions and recommended install densities between the packaging, dense-pack documentation and weatherization retrofit documentation. In all other cases, the installer is faced with a range of instructions and install densities to work toward. Greater clarity and consistency are needed in the installation instructions and recommended install densities for fiberglass products used in dense-pack retrofit applications.

## 2.4 Installation Methods and Densities for Test Wall Specimens

The experimental program for this work was modified to address the range of installation methods and install densities provided on the material packaging and in other documentation from the five loose-fill fiberglass insulation manufacturers. None of the stone wool insulation manufacturers support dense-pack applications, so none provided any directions or target densities for this application. The same insulation techniques and target densities were used for fiberglass and stone wool products.

The InsulMaxx 2000 machine was set up with 150 ft of internally corrugated hose with smooth transitions down to either a 2-in. ID nozzle or an 8-ft. long, 1-1/4-in. ID insertion tube. Test wall specimens were prepared using three installation methods:

- **Bottom fill.** The insertion tube was fed into the cavity, upward through one lower hole and drilled at approximately 24 in. above the bottom plate, until it was approximately 6 in. from the top of the cavity. The cavity was filled with insulation and the tube was slowly withdrawn as the cavity filled, the material compressed, and the feed rate slowed. This method most closely reflects the install method used for dense-packing cellulose. However, to achieve the lower densities recommended for fiberglass materials, the tube must be removed before the material flow comes to a complete stop and, unlike cellulose dense-packing, the tube is not pulled out and pushed part way back in.
- **Top fill.** The insertion tube was fed into the cavity, downward through one top hole and drilled at approximately 6 in. below the top plates, until it was approximately 6 in. from the bottom of the cavity. The cavity was filled with insulation and the tube was slowly withdrawn as the cavity filled, the material compressed, and the feed rate slowed.
- **Two-inch nozzle.** The cavity was filled with a 2-in. ID nozzle, using a “two-hole” or “three-hole” approach. The nozzle was introduced first through a lower hole and drilled at approximately 24 in. above the bottom plate. Insulation was filled first downward and then upward until it reached the level of an upper hole and drilled at approximately 24 in. below the top plates. The nozzle was then moved to the upper hole and insulation was filled upward until it reached the top of the cavity. When using the “three-hole” variation, the nozzle was inserted into the top hole and drilled approximately 6 in. below the top plates. Then material was added until the insulation was slightly packed.

The fiberglass insulation packaging and other documentation suggest a range of installation densities covering 1.0–2.6 pcf. BSC set out to prepare test wall specimens to address everything from median densities recommended for weatherization/retrofit/reinsulation applications (e.g., 1.5–1.8 pcf) to the higher densities clearly intended for dense-pack (e.g., 2.2–2.6 pcf) and even into higher fiberglass dense-pack densities reported by some installers (e.g., 3.0 pcf). BSC

intentionally avoided the lowest densities listed in “closed cavity” fill tables on packaging (e.g., 1.0 to < 1.5 pcf), expecting that they would not provide any effective airflow resistance.

## **2.5 Other Experimental Methods**

Other aspects of the test wall specimen preparation and airflow resistance testing followed the procedures summarized by Schumacher (2011). Installation techniques were refined and machine settings were established using the same density box method that was used for the previous cellulose tests. The installed material density was established using the same apparatus and methods as used for the cellulose tests. Finally, the background air leakage, short-path airflow test, and long-path airflow tests were conducted using the same equipment and methods as used for the cellulose tests.

### 3 Results and Discussion

This section provides a summary of airflow resistance test results for select fiberglass and stone wool insulation materials.

#### 3.1 Test Program

Three loose-fill fiberglass insulation products were randomly selected from the five collected. Only one stone wool product was collected and tested. Only Building Science Laboratories staff know which manufacturers’ materials were used in the testing; the reporting is done using material codes (e.g., tests A1, A2, and A3 represent tests 1, 2, and 3 conducted using materials from manufacturer A). This reporting method was also used in the cellulose tests reported by Schumacher (2011). To avoid confusion with the previously completed cellulose test results, the three fiberglass materials tested were designated with letters O, P, and Q; the lone stone wool product was designated with letter R.

Test wall specimens were prepared to cover the range of densities identified on the packaging and in other documentation: roughly 1.8–2.5 pcf.

#### 3.2 General Airflow Test Results

Roughly 16 fiberglass test wall specimens and three stone wool test wall specimens were prepared and tested.

##### 3.2.1 Long- and Short-Path Airflow Test Results

Table 4 provides a summary of the test results for the four MFI products (three fiberglass and one stone wool) that were evaluated in this project. The highest and lowest measured flow rates are reported for each material along with the install density that was associated with each flow rate. For purposes of comparison, the table also includes the highest and lowest measured test results for the cellulose materials that were evaluated in 2011. Finally, the table includes the CFI benchmark flow rates recommended by Schumacher (2011).

**Table 4. Summary of Mineral Fiber Test Results With Comparison to Previous Cellulose Tests**

	Material O (fiberglass)		Material P (fiberglass)		Material Q (fiberglass)		Material R (stone wool)		Materials A–J (cellulose)	
	cfm <sub>50</sub> /ft <sup>2</sup>	pcf	cfm <sub>50</sub> /ft <sup>2</sup>	pcf	cfm <sub>50</sub> /ft <sup>2</sup>	pcf	cfm <sub>50</sub> /ft <sup>2</sup>	pcf	cfm <sub>50</sub> /ft <sup>2</sup>	pcf
<b>Long-Path Airflow</b>										
<b>High</b>	2.6	2.0	1.2	1.5	1.7	2.2	1.3	3.1	0.45	3.4
<b>“Benchmark”</b>									0.33	3.5
<b>Low</b>	0.42	2.3	0.28	2.0	0.62	2.7	0.67	4.1	0.12	3.7
<b>Short-Path Airflow</b>										
<b>High</b>	6.8	2.0	4.1	1.7	4.7	2.2	4.8	3.1	1.3	3.5
<b>“Benchmark”</b>									1.0	3.5
<b>Low</b>	1.1	2.3	0.76	2.3	1.8	2.7	2.0	4.1	0.37	3.7

When installed to higher densities (e.g., approximately 2.3–2.7 pcf) two of the three fiberglass insulation materials (O and P) produced long-path airflow test results that were comparable with the cellulose insulation long-path airflow test results obtained by Schumacher in 2011. That

testing established long- and short-path airflow “benchmarks” of 0.33 and 1.0 cfm<sub>50</sub>/ft<sup>2</sup>, respectively, for historical dense-pack cellulose retrofits installed to 3.5 pcf. Again, when installed to higher densities (e.g., higher than approximately 2.3–2.7 pcf), two of the fiberglass insulation materials (O and P) produced short-path airflow test results that were comparable with the cellulose insulation short-path airflow test results obtained in 2011. The measured performance of the fiberglass test wall specimens depended highly on the material tested and the installation method. These issues are discussed further in Section 3.3 of this report.

The long- and short-path airflow tests for the stone wool insulation resulted in airflow rates that were 1.5–2 times higher than the cellulose tests, despite the fact that the stone wool was installed at higher densities (e.g., 3.1–4.1 pcf).

### 3.2.2 Flow Regime and Pressure Range

Dense-pack fiber insulation provides significant resistance to the flow of air. When the fibers completely fill a stud bay or other framed cavity, air must flow through the fiber matrix rather than through open voids. The resulting airflow should be laminar and, if data regression is performed assuming a power law relationship, the flow exponent (n) should be close to 1.

Figure 3 plots the flow exponents calculated for the background leakage (blue squares in lower part of plot), long-flow path (red squares in upper part of plot) and short-flow path (green triangles in upper part of plot) tests for each of the mineral fiber test wall specimens. For all but one of the long- and short-flow path tests, the flow exponent is 0.9 or higher, suggesting that laminar flow is dominant and that the dense-pack fiber insulation largely eliminates open voids that would permit higher airflow rates. Figure 4 shows the same plot for the CFI tests that were conducted in 2011. The flow exponents for the long- and short-flow path tests of the cellulose test wall assemblies are slightly higher.

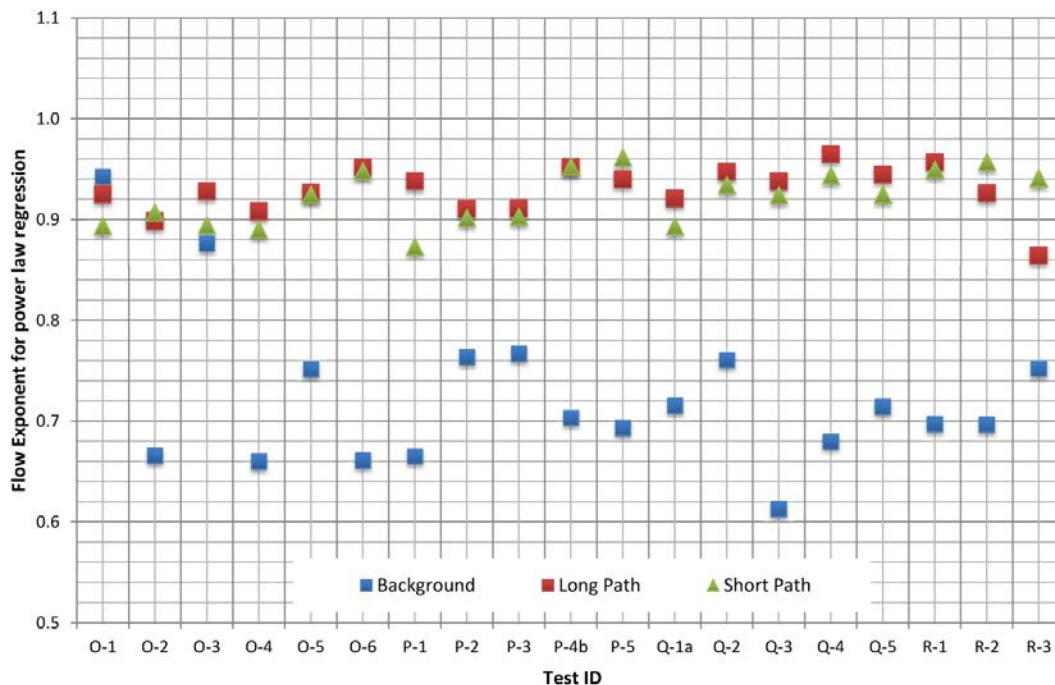


Figure 3. Flow exponents for all MFI tests

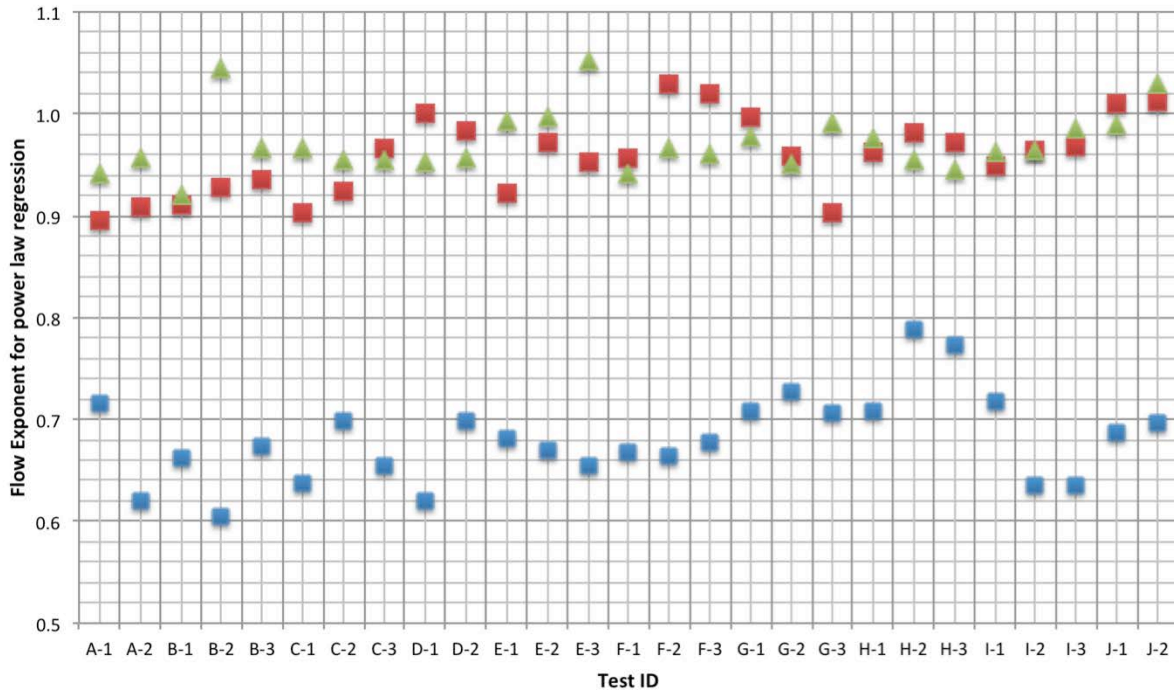


Figure 4. Flow exponents for previous CFI tests

(Schumacher 2011)

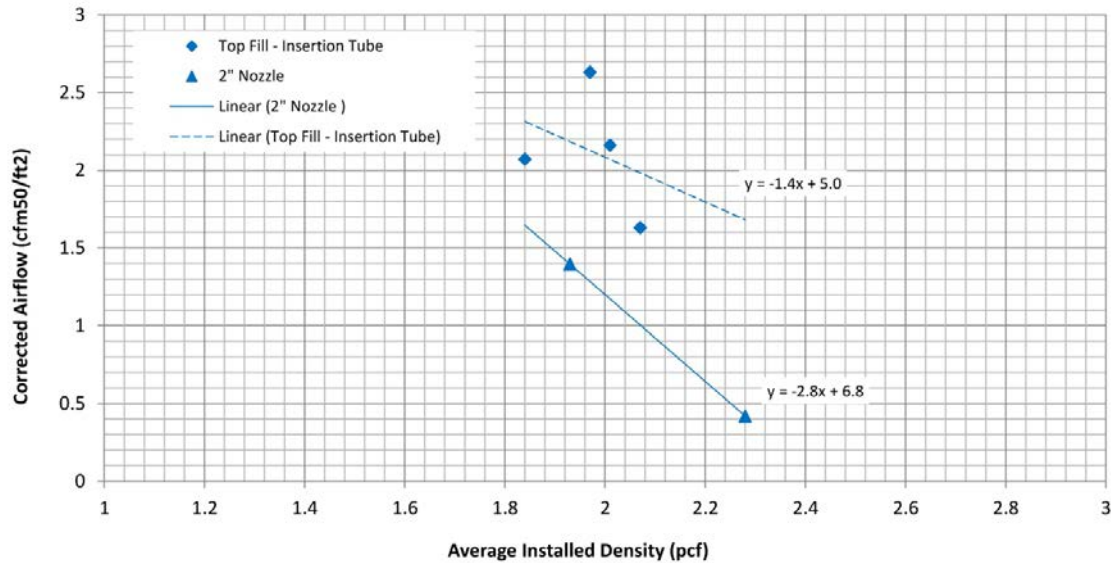
### 3.3 Influence of Material and Installation Method

This section discusses the individual airflow test results for the three fiberglass and one stone wool materials tested. The influences of material and installation method are addressed.

#### 3.3.1 Material O

Density box specimens for Material O were first prepared using the bottom fill installation method. However, BSC was unable to produce acceptable specimens with densities lower than 2.8–3.2 pcf. When lower test specimen densities were achieved using this method, the material was clearly not evenly distributed. For this reason, the team opted not to produce any full test wall specimens using the bottom fill method; but instead, sought to produce test wall specimens with densities of 1.8–2.5 pcf, using the top fill and 2-in. nozzle installation methods.

The long-path airflow data for the six Material O tests are presented in Figure 5. Four of the Material O airflow tests were performed on samples installed using the top fill installation method (i.e., using the 8-ft insertion tube through the top installation hole). The remaining two airflow tests were performed on samples installed using just the 2-in. nozzle method (i.e., installed through the lower, upper, and top access holes on the front of the test apparatus).



**Figure 5. Material O: long-path airflow rest results versus installed density and installation method**

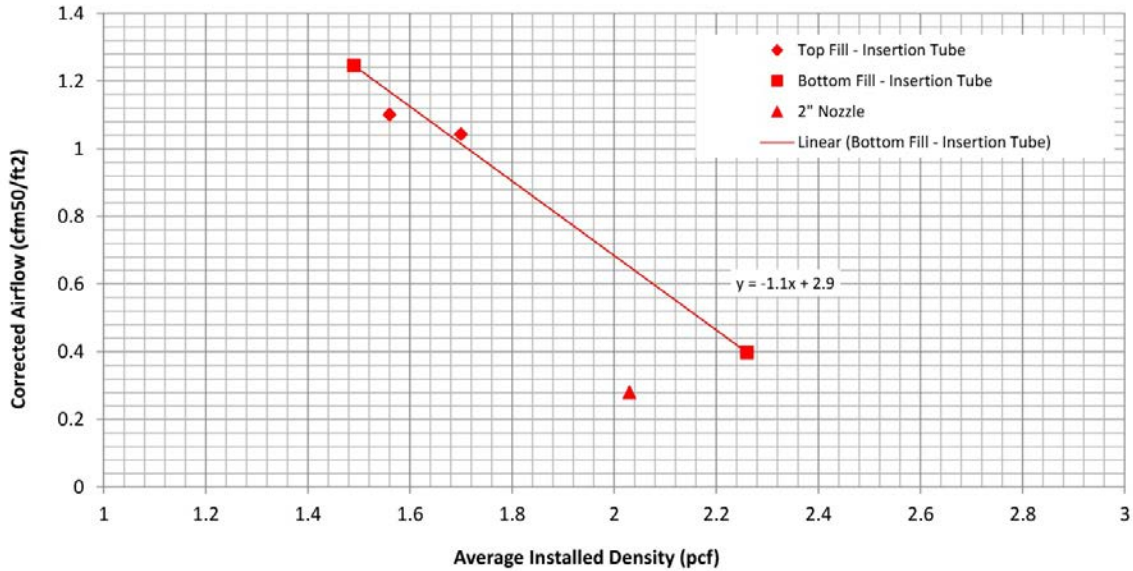
The data presented in Figure 5 indicate that a wide range of airflow rates are possible for densities of 1.8–2.1 pcf. The airflow data from the insertion tube installations (O-1 to O-4, represented by the diamond-shaped markers) suggest a low correlation between airflow rate and density. Pockets of higher and lower density were visible in the test wall assemblies installed using the insertion tube method. The same observations were made when the CFI test specimens were prepared in 2011; however, density variations are believed to have less impact on airflow because the overall installed density of the CFI specimens was higher (3.5 pcf for CFI versus 1.8–2.2 pcf for MFI). Lower airflow rates and tighter standard deviation might be achieved if MFI specimens were installed to higher densities using the insertion tube method (whether it is bottom fill or top fill).

The lowest airflow rates for Material O were achieved using the 2-in. nozzle to fill the cavity through all three installation ports.

The distribution of the insulation within the stud cavity was assessed by determining the difference between the long-path and short-path flow exponents. These flow exponents indicated that the 2-in. nozzle resulted in a more uniform density distribution. The average difference between the long- and short-path flow exponent values was 0.023 for the insertion tube and 0.003 for the 2-in. nozzle. The flow exponent data for each test are presented in Figure 3.

### 3.3.2 Material P

The long-path airflow data for the five Material P tests are presented in Figure 6. Four Material P test wall samples were prepared using the insertion tube methods (2 bottom fill and 2 top fill). The insulation for tests P-1 and P-2 (represented by the diamond-shaped markers) was installed using the top fill method while the bottom fill method was used for tests P-3 and P-4 (represented by the square markers). The insulation for the P-5 test was installed using the 2-in. nozzle method and all three installation holes (lower, upper, and top) on the front of the test apparatus.



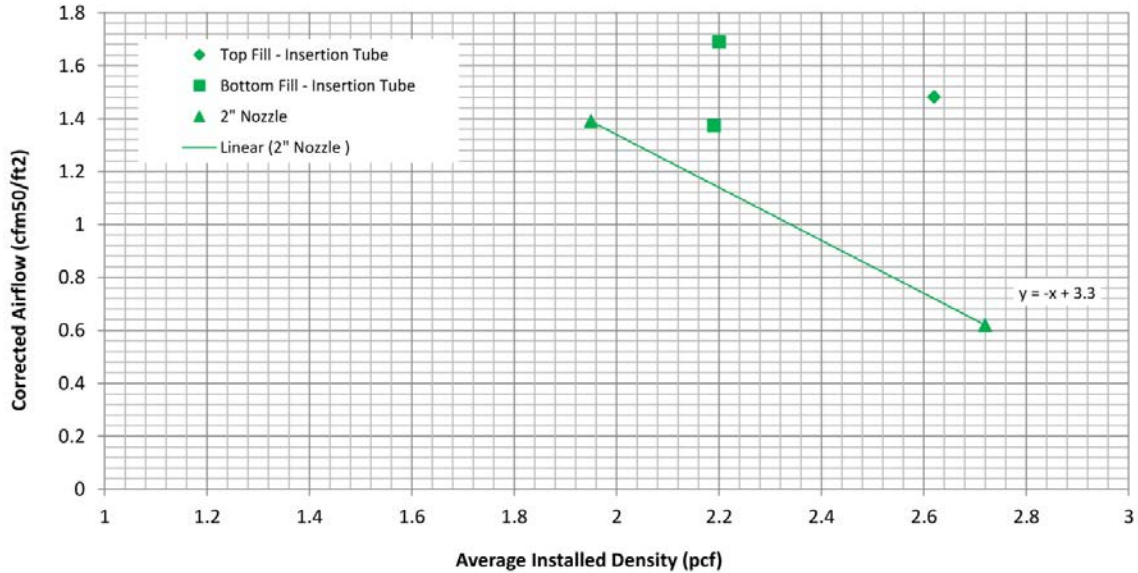
**Figure 6. Material P: long-path airflow rest results versus installed density and installation method**

The data presented in Figure 6 indicate a well-defined correlation between airflow and installed density for Material P. The regression analysis defines the relationship between airflow and density with a high degree of confidence for Material P. The slope of the regression line for the insertion tube installations was determined to be  $-1.1 \text{ cfm}_{50} \cdot \text{ft}/\text{lb}$  with an  $R^2$  of 0.99. Because there was a high degree of correlation between airflow and density, only one test was performed on Material P using the 2-in. nozzle installation, which yielded the lowest airflow performance for Material P. The air leakage test performed on the 2-in. nozzle installation determined the lowest measured long-path airflow rate ( $0.280 \text{ cfm}_{50}/\text{ft}^2$  at 2.03 pcf) of all the material data sets.

The difference between the long-path and short-path flow exponents varied between 0.001 and 0.065 for the insertion tube installations (0.021 on average) and 0.022 for the 2-in. nozzle. The data in Figure 3 show that with the exception of P-1, the insertion tube installations produced uniform density distributions within the stud cavity.

### 3.3.3 Material Q

Figure 7 presents the long-path airflow data for the five Material Q test wall specimens. Three of the Material Q airflow tests were performed on test wall specimens prepared using the 8-ft. insertion tube, one using the top fill method (Q-3) and two using the bottom fill method (Q-1, Q-2). The remaining two airflow tests were performed on specimens installed using the 2 in. nozzle (Q-4, Q-5). The average installed density for Material Q tended to be higher than for other fiberglass products using similar installation methods. Overall, the average installed density was 2.3 pcf for both the insertion tube and 2-in. nozzle methods. The lowest airflow rates were achieved using the 2-in. nozzle installation method.



**Figure 7. Material Q: long-path airflow rest results versus installed density and installation method**

The data presented in Figure 7 indicate a well-defined correlation between airflow and installed density for Material Q when installed using the 2-in. nozzle; no correlation was observed in the insertion tube data. Better airflow performance might be observed if higher install densities had been sought using the insertion tube method.

The regression analysis of the 2-in. nozzle data could not be defined with any degree of confidence because of the limited sample size (two); however, the slope of the regression line was determined to be  $-1.0 \text{ cfm}_{50} \cdot \text{ft}/\text{lb}$ , which compared well with the other data sets, as summarized in Table 4.

The difference between the long- and short-path flow exponents varied between 0.013 and 0.027 for the insertion tube installations and averaged 0.02 for the 2-in. nozzle. As shown by the flow exponents presented in Figure 3, the insulation density of the Material Q test cavities was moderately well distributed relative to the other Material types. The flow exponent data also indicate that the installation method had a limited effect on density distribution.

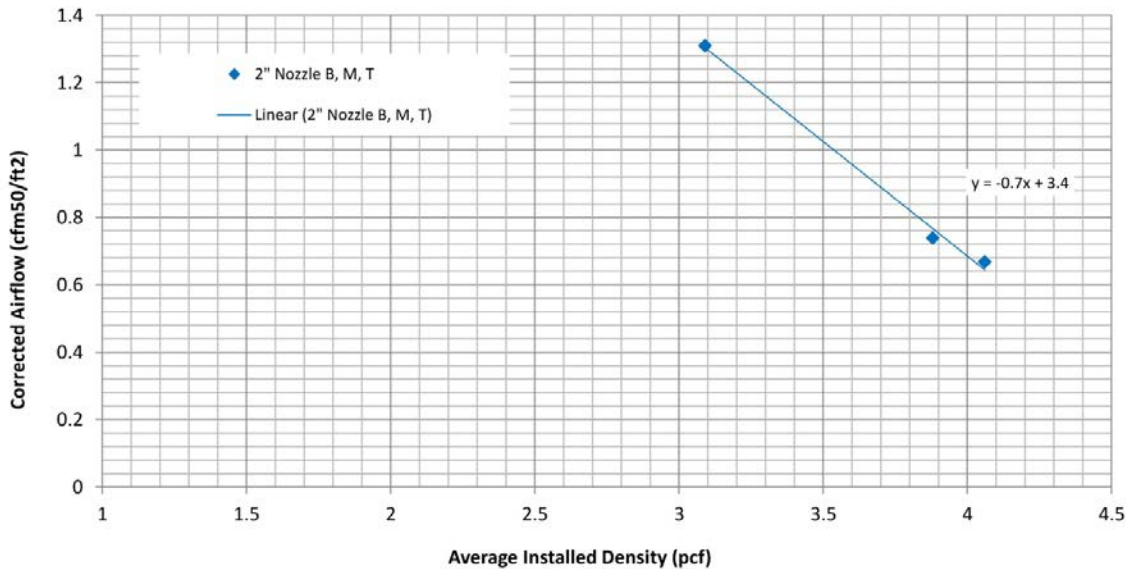
### 3.3.4 Material R

The stone wool product designated Material R was not specifically designed for dense-pack retrofit applications. Through the density box calibration work, BSC found it impossible to move the fiber nodules through the 1.25-in. ID insertion tube; the hose constantly plugged. As a result, BSC was only able to prepare test wall specimens using the 2-in. nozzle method. Further, the team was unable to produce test wall specimens with densities lower than approximately 3.0 pcf. As a result, the average installed densities for the stone wool test walls were considerably higher than those produced using any of the fiberglass materials included in this study.

Finally, the stone product contained a considerable amount of fine to coarse, non-fibrous material (i.e., “shot”) that BSC thought was too abrasive and likely to cause accelerated wear on



the fiber-moving equipment in dense-pack retrofit applications. The number of airflow tests performed on this sample was limited to three because this product is highly abrasive.



**Figure 8. Material R: long-path airflow rest results versus installed density and installation method**

Data from the airflow tests performed on this material demonstrated a consistent increase in airflow resistance with density; these data are presented in Figure 8. In light of the small data set, the slope of the regression line indicates that the airflow through this material changes at a rate of  $-0.7 \text{ cfm}_{50} \cdot \text{ft}/\text{lb}$ . This number compares well with the regression slopes observed in the fiberglass samples that were installed using the 2-in. nozzle; however, the densities are significantly higher. The lowest airflow rates for Material R were achieved with densities of 3.9 and 4.1 pcf. The corrected airflow rates associated with each of these densities were 0.74 and 0.67  $\text{cfm}_{50}/\text{ft}^2$ , respectively.

These results also indicate that the resistance to airflow increases more slowly with density than what was observed in the fiberglass samples. This relationship may change if testing was completed using a more refined mineral wool product without the non-fibrous material (i.e., various sizes of solidified blobs or balls of molten rock, referred to as *shot*).

### 3.3.5 Installation Methods

Based on manufacturers’ instructions on packaging and in other documentation, three installation methods were tested. The installation experience and airflow test results collected under laboratory conditions suggest that the 2-in. nozzle installation method results in more even material distribution and lower long- and short-path airflow rates (i.e., higher airflow resistance) than either of the insertion tube methods (i.e., top or bottom). Also, many installers are familiar with nozzle installation methods because they are commonly used for installing cellulose fiber or fiberglass insulation in netted-and-blown installations (e.g., Blown-In Batt System).

However, in netted-and-blown applications installers can easily *see* the “fill” of the cavity space through the netting and assess distribution and density by *touch* (i.e., by pushing on the netting). In netted-and-blown applications cavity spaces can be filled completely and to sufficient density

to minimize the potential for settling. In retrofit applications, loose-fill insulation materials are installed in existing cavities that are bounded by opaque, stiff materials (e.g., framing, sheathing, plaster, wall board) so the installer can neither see into the cavity space to assess fill nor touch the surface of the insulation to assess distribution and density. The insertion tube installation methods were (in part) developed to address these problems.

Weatherization contractors and dense-pack installers are trained to understand different framing methods and to site-assess framing conditions to identify obstructions (e.g., blocking) that might prevent all cavities from being completely filled with insulation. Insertion tubes are graduated (i.e., typically marked at 1-ft intervals). Installers are taught to use the insertion tube to “probe” the bounds of cavities to identify obstructions as they are installing. The insertion tube is pushed to the furthest reaches of the cavity to confirm that dimensions are as expected. The insertion tube is withdrawn only a few inches before starting to fill the cavity. This ensures that insulation is delivered to the far end of the cavity without catching on partial obstructions and creating an uninsulated space or pocket, as is possible when using a nozzle installation method.

Some installers use the nozzle installation method for dense-pack retrofit applications. This testing supports the belief that good airflow resistance can be achieved using the nozzle installation method. However, given the realities discussed in the previous paragraph, insertion tube installation methods should be considered a best practice for retrofit applications. If the only goal of an insulation retrofit is to fill cavities with insulation, insertion tube installation methods should be recommended and lower density installs can be accepted (assuming density is sufficient to prevent settling). However, if the goals are to fill cavities with insulation *and* to reduce airflow in and through assemblies, insertion tube installation methods should be accepted and install densities should be established to provide sufficient airflow resistance.

This research sought to evaluate test wall specimens installed to the manufacturer-recommended densities, using the methods identified in the various manufacturers’ literature. If the goal is to provide comparable airflow resistance to the benchmarks for historical dense-pack cellulose retrofits (i.e., long-path airflow of  $0.33 \text{ cfm}_{50}/\text{ft}^2$  and short-path airflow of  $1.0 \text{ cfm}_{50}/\text{ft}^2$ ), further testing is necessary to establish recommended install densities for insertion tube installation methods.

## 4 Conclusions and Recommendations

This report documents airflow resistance test results for dense-pack retrofit applications using MFI materials (i.e., glass fiber and stone wool). The test results are compared to previous airflow resistance tests for dense-pack retrofit applications using 10 different CFI materials.

Loose-fill MFI products (i.e., fiberglass and stone wool) have different fiber structures than CFI and, as a result, mineral fiber products are expected to require different installation densities than cellulose insulation products. However, the recommended installation methods and densities for fiberglass products are unclear. Only one of the five fiberglass materials collected had consistent instructions and recommended install densities between the packaging, dense-pack documentation and weatherization/retrofit documentation. In all other cases, the installer is faced with a range of instructions and install densities to work toward. Greater clarity and consistency are needed in the installation instructions and recommended install densities for fiberglass products used in dense-pack retrofit applications.

Airflow resistance varied significantly between loose-fill fiberglass products, even though all the compared products are marketed and supported for use in dense-pack retrofit applications. When these fiberglass products were installed at approximately 2.2 pcf, the variance was 0.33–1.73  $\text{cfm}_{50}/\text{ft}^2$ . The distribution of the installed material, and thus the airflow resistance, also depend on installation method. In this testing, BSC sought to qualitatively and quantitatively assess the three installation methods identified in the survey of instructions from packaging and information from dense-pack and weatherization/retrofit documentation: (1) bottom fill, using an insertion tube installed up through a hole at approximately 24 in. above the bottom plate; (2) top fill, using an insertion tube installed down through a hole at approximately 6 in. below the top plates; and (3) 2-in. nozzle, installed through two or three holes (e.g., at holes approximately 24 in., 72 in., and 90 in. above the bottom plate).

Two of the three loose-fill fiberglass products tested (installed at approximately 2.3 pcf) produced long-path flow rates of 0.28 and 0.42  $\text{cfm}_{50}/\text{ft}^2$  and short-path airflow rates of 0.76 and 1.1  $\text{cfm}_{50}/\text{ft}^2$ . These are comparable to the cellulose dense-pack retrofits benchmarks of 0.33 and 1.0  $\text{cfm}_{50}/\text{ft}^2$  for the long- and short-path airflow rates, respectively (CFI installed at 3.5 pcf as required by BPI). However, the fiberglass test walls were prepared using the 2-in. nozzle installation method, not the insertion tube methods recommended as best practice for retrofit applications. These results indicate that there is potential for dense-pack applications of MFI, but that more work needs to be done to develop appropriate standards for real-world installation needs. In particular, further testing should be conducted to establish recommended install densities for insertion tube installation methods.

Finally, none of the stone wool manufacturers support dense-pack retrofit applications using their products. Only one loose-fill stone wool insulation product was collected for testing. The stone wool fibers and nodules were too large to successfully install using either of the insertion tube techniques. Loose-fill stone wool is not recommended for dense-pack retrofit applications.

## References

BPI (2010). BPI-103 “Standard Test Method for Thermal Insulation Materials Used in Air Retarder Applications.” Malta, NY: Building Performance Institute.

EDU (1986). “Research Shows Increased Building Tightness with Cellulose Insulation.” *Energy Design Update*, vol. 5, no. 12, December 1986.

Schumacher, C. (2011). Building America Report 1109, *High Impact Project – Support of Standards Development: Dense-pack Airflow Resistance, Final Research Report*. Somerville, MA: Building Science Corporation.

## **Appendix A: Loose-Fill Fiberglass Insulation Products for Dense-Pack Retrofit Applications**

- Certaineed Optima
- Guardian CWI Plus
- Johns Manville Spider
- Knauf EcoFill-WX
- Owens Corning ProPink L77

Appendix A1.1:  
**Certainteed Optima**

**Documentation on Material Packaging**

# Loose Fill Fiber Glass Insulation for Closed Cavity Installation



**OPTIMA® Loose Fill Fiber Glass Insulation is designed for closed cavity applications installed behind OPTIMA fabric or equivalent. This product is not designed for attic open blow applications.**

- COMPLIANCES**
- Type 1, per ASTM C 764.
  - Noncombustible—meets ASTM E 136 criteria.
  - Surface Burning Classification as determined by ASTM E 84 for Fiber Glass only.
  - Flame Spread: 3. Smoke Developed: 3.
  - Thermal Vapor Sorption 5% or less by weight when tested in accordance with ASTM C 1104.
  - Formaldehyde values are determined in accordance with ASTM C 687 & C 518.
  - California Air Resources Board (CARB) Low VOC.
  - Contains no asbestos.
  - Tested for use under NYS LUPRC Article 15.
  - New York City—MEA 218-85M
  - California 1350

**PNEUMATIC APPLICATION**

This product is designed to be pneumatically installed by professional insulator contractors using blowing machines recommended by CertainTeed Corporation. The installer must have an effective air supply, a uniform compressor-lead section, and adequate air volume. To install properly, see the OPTIMA Installation System Instruction Manual (R30-24-223) and follow the instructions carefully.

**THERMAL PERFORMANCE**

To achieve the thermal performance listed below, OPTIMA® Loose Fill Insulation must be installed behind OPTIMA fabric or equivalent in closed cavities. Do not mix this product with other blown insulation. Such mixing would invalidate thermal claims. The stated R-Value (Thermal Performance) is achieved by installing the specified number of bags per 1,000 square feet at the stated cavity thickness. To achieve the desired cavity thickness per bag, the bags per 1,000 square feet must never be less than the minimum and coverage must not exceed the maximum as stated on the following coverage charts. Coverages are based on 28 lb. nominal bag weight.

**CertainTeed**  
 Manufactured by CertainTeed Corporation  
 P.O. Box 860, Valley Forge, Pa. 15462  
 A Saint-Gobain Company

For technical information or R-Value recommendations for your region, call 800-233-8999. Visit our Web Site at: <http://www.certainteed.com> • Fax on-Demand service: 800-947-0657

**Contains No Formaldehyde**

## COVER AGE CHARTS

**Sidewall, Cathedral Ceiling and Other Closed Cavities that are Compression Filled**

Thickness Inches (2-1/4)	R-Value (2-1/4)	Density Lbs. Per Cu. Ft.	Maximum Weight Lbs. Per Sq. Ft.	Minimum Weight Lbs. Per Sq. Ft.	Minimum R-Value (2-1/4)	Minimum R-Value (2-1/4) Coverage Per Bag
3 1/2	15	1.8	0.025	14.8	14.8	53.3
4 1/2	21	1.8	0.025	19.5	19.5	37.9
5 1/2	26	1.9	0.028	24.8	24.8	29.7
6 1/2	30	1.9	0.028	29.8	29.8	25.2
7 1/2	35	1.9	0.028	34.8	34.8	21.8
8 1/2	40	1.9	0.028	39.8	39.8	18.8
9 1/2	45	1.9	0.028	44.8	44.8	16.3
10 1/2	50	1.9	0.028	49.8	49.8	14.1

## Floored Attics—Closed Cavities That Are Not Compression Filled

Thickness Inches (2-1/4)	R-Value (2-1/4)	Density Lbs. Per Cu. Ft.	Maximum Weight Lbs. Per Sq. Ft.	Minimum Weight Lbs. Per Sq. Ft.	Minimum R-Value (2-1/4)	Minimum R-Value (2-1/4) Coverage Per Bag
3 1/2	15	1.8	0.020	15.4	15.4	60.0
4 1/2	21	1.8	0.020	21.4	21.4	44.4
5 1/2	26	1.9	0.022	27.4	27.4	34.0
6 1/2	30	1.9	0.022	33.4	33.4	29.3
7 1/2	35	1.9	0.022	39.4	39.4	25.3
8 1/2	40	1.9	0.022	45.4	45.4	22.3
9 1/2	45	1.9	0.022	51.4	51.4	19.8
10 1/2	50	1.9	0.022	57.4	57.4	17.3

## WARNINGS

Use this product only when the National Safety Council, Inc. is present. For more information on safety, visit [www.nsc.org](http://www.nsc.org). This product contains a chemical known to the State of California to cause cancer.

This fiber glass dust may cause temporary skin, eye, throat and upper respiratory irritation.

In 2001, the International Agency for Research on Cancer (IARC) classified glass wool as Group 1, not carcinogenic as to carcinogenicity to humans.

This fiber glass dust may cause skin, eye and respiratory irritation.

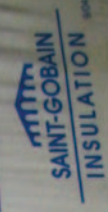
- Wear long sleeves, gloves and cap.
- Wear eye protection (goggles, safety glasses or face mask).
- Use a vacuum with an efficient HEPA or MERV 13 filter, such as 3M model HE210, HE511, HE233 or equivalent.

## DANGER

To prevent overheating of electrical wiring, do not install in or near electrical wiring. Do not install in or near any other electrical wiring. Do not install in or near any other electrical wiring. Do not install in or near any other electrical wiring. Do not install in or near any other electrical wiring.

## INSTALLATION STATEMENT

Insulation has been installed in accordance with manufacturer's recommendations. Insulation is not to be used in any other application. Insulation is not to be used in any other application.



**MINIMUM WEIGHT-27 LBS.  
 PRODUCT CODE 900329**

New York City—ME 210-830M  
California 1350

## **PNEUMATIC APPLICATION**

This product is designed to be pneumatically installed by professional insulation contractors using blowing machines recommended by CertainTeed Corporation. The machines must have an effective shredding section, a uniform controlled-feed section, and adequate air volume. To install properly, see the OPTIMA Installation System Instruction Manual (#30-24-223) and follow the instructions carefully.

## **THERMAL PERFORMANCE**

**IMPORTANT:** To achieve the thermal performance listed below, OPTIMA® Loose Fill Insulation must be installed behind OPTIMA fabric or equivalent in closed cavities. Do not mix this product with other blown insulation. Such mixing would invalidate thermal claims. The stated R-Value (Thermal Performance) is achieved by installing the specified number of bags per 1,000 square feet at the stated cavity thickness. To achieve the desired cavity thickness R-Value, the bags per 1,000 square feet must never be less than the minimum and coverage must never exceed the maximum as stated on the following coverage charts. Coverages are based on 28 lb. nominal bag weight.

# **CertainTeed**

**Manufactured by CertainTeed Corporation**

**P.O. Box 860, Valley Forge, PA 19482**

**800-233-8990**

**A Saint-Gobain Company**

1-800-233-8990



# Loose Fill Fiber Glass Insulation

## COVERAGE CHARTS

### Sidewall, Cathedral Ceiling and Other Closed Cavities that are Compression Filled

Thickness Inches	R-Value	Density Lbs. Per Cu. Ft.	Minimum Weight Lbs. Per Sq. Ft.	Bags Per 1,000 Sq. Ft.	Maximum Sq. Ft. Coverage Per Bag
3 1/2 (2 x 4)	15	1.8	0.525	18.8	53.3
5 1/2 (2 x 6)	23	1.8	0.825	29.5	33.9
7 1/4 (2 x 8)	30	1.8	1.088	38.8	25.7
9 1/4 (2 x 10)	39	1.8	1.388	49.6	20.2
11 1/4 (2 x 12)	47	1.8	1.688	60.3	16.6
13 1/4 (2 x 14)	56	1.8	1.988	71.0	14.1

### Floored Attics—Closed Cavities That Are Not Compression Filled

Thickness Inches	R-Value	Density Lbs. Per Cu. Ft.	Minimum Weight Lbs. Per Sq. Ft.	Bags Per 1,000 Sq. Ft.	Maximum Sq. Ft. Coverage Per Bag
3 1/2 (2 x 4)	12	1.0	0.292	10.4	96.0
3 1/2 (2 x 4)	13	1.2	0.350	12.5	80.0
3 1/2 (2 x 4)	14	1.4	0.408	14.6	68.6
3 1/2 (2 x 4)	14	1.6	0.467	16.7	60.0
5 1/2 (2 x 6)	19	1.0	0.458	16.4	61.1
5 1/2 (2 x 6)	21	1.2	0.550	19.6	50.9
5 1/2 (2 x 6)	22	1.4	0.642	22.9	43.6
5 1/2 (2 x 6)	22	1.6	0.733	26.2	38.2
7 1/4 (2 x 8)	26	1.0	0.604	21.6	46.3
7 1/4 (2 x 8)	27	1.2	0.725	25.9	38.6
7 1/4 (2 x 8)	29	1.4	0.846	30.2	33.1
7 1/4 (2 x 8)	30	1.6	0.967	34.5	29.0
9 1/4 (2 x 10)	33	1.0	0.771	27.5	36.3
9 1/4 (2 x 10)	35	1.2	0.925	33.0	30.3
9 1/4 (2 x 10)	36	1.4	1.079	38.5	25.9
9 1/4 (2 x 10)	38	1.6	1.233	44.0	22.7

## WARNING

Contains fibrous material. See the Safety Program, is

This product may irritate the skin and cause coughing.

This fiber glass insulation is not for use in upper respiratory areas.

In 2001, the U.S. Environmental Protection Agency reclassified this product as a known human carcinogen.

This fiber glass insulation is not for use in upper respiratory areas.

- Wear long sleeves and pants.
- Wear eye protection.
- Use a NIOSH-approved respirator with a 3M filter.

After handling, wash hands thoroughly.

- Bathe with soap and water.
- Wash clothes separately.

For additional information, call 1-800-233-9000.

## IMPORTANT

In order to ensure proper installation, use only the equivalent of 3.5 lbs. per cu. ft. of the following insulation: 3.5 lbs. per cu. ft. at 0.5" thickness. This is the minimum density required for the correct installation of fiber glass insulation. These are the minimum densities for PL 400 S & Construction Adhesive.

All loose fill fiber glass insulation should be kept in its original packaging until ready for use. It should be stored in a dry, well-ventilated area.

Appendix A1.2:  
**Certainteed Optima**

**Documentation for Dense-Packing**

Sell Sheet, “Certainteed Dense Packing Fiberglass Insulation”

# CertainTeed Dense Packing

## Fiber Glass Insulation

# InsulSafe<sup>®</sup> SP OPTIMA<sup>®</sup>



**InsulSafe<sup>®</sup> SP and OPTIMA<sup>®</sup> offer many additional benefits when compared to cellulose**

Historically, cellulose has been promoted as the only choice for dense pack applications. However, CertainTeed InsulSafe SP and OPTIMA loose-fill fiber glass insulation provides the same reductions in air permeance\* as cellulose while delivering a number of other significant benefits.

- Fewer packages needed — less labor, handling and jobsite trash
- Higher R-Value per inch — higher wall R-Values
- EPA and BPI approved for weatherization programs and retrofit applications
- GREENGUARD<sup>®</sup> Children and Schools Certified for indoor air quality
- High recycled glass content — exceeds EPA's Recovered Materials Advisory Notice
- Won't absorb moisture or support mold growth
- Naturally non-combustible; no fire-retardant chemicals added
- Doesn't settle
- Less dust

\* BPI-102, "Standard for Air Resistance of Thermal Insulation Used in Retrofit Cavity Applications — Material Specification," is BPI's approved technical standard for insulation used in air sealing, and requires that such products limit maximum air permeance to 3.5 cfm/ft<sup>2</sup> (as measured using ASTM C522). InsulSafe SP achieves this permeance rating at a density of 2.2 lbs/ft<sup>3</sup> and OPTIMA at 2.5 lbs/ft<sup>3</sup>. This compares to 3.5 lbs/ft<sup>3</sup> for cellulose.

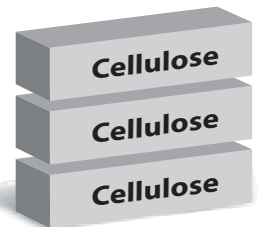
### InsulSafe<sup>®</sup> SP vs. Cellulose

**To insulate a 1,000 sq. ft. attic:  
15 packages vs. 46 packages**

**Fiber Glass:  
Less waste &  
easy to transport**



1 package of  
CertainTeed InsulSafe<sup>®</sup> SP  
at R-30 covers 67.1 sq. ft.



It can take up to 3 packages of  
cellulose to cover 65.1 sq. ft. at R-30  
**Based on 22 lb. package**

In wall applications, 1 bag of InsulSafe SP = approximately 2 bags of cellulose.  
In attic applications, 1 bag of InsulSafe SP = approximately 3 bags of cellulose.

**CertainTeed**  
SAINT-GOBAIN

# Dense Packing Installation Guidelines for InsulSafe SP® and OPTIMA®

CertainTeed Fiber Glass Insulation Dense Pack Coverage Charts											
INSULSAFE® SP						OPTIMA®					
Framing	Cavity Depth (inches)	R-Value	Coverage (max. ft <sup>2</sup> /pkg.)	Weight (min. lbs/ft <sup>2</sup> )	Packages (min. /1,000 ft <sup>2</sup> )	Framing	Cavity Depth (inches)	R-Value	Coverage (max. ft <sup>2</sup> /pkg.)	Weight (min. lbs/ft <sup>2</sup> )	Packages (min. /1,000 ft <sup>2</sup> )
2 x 4	3½	15	48.3	0.642	20.7	2 x 4	3½	15	38.4	0.729	26.0
2 x 4	3⅝	15	46.6	0.665	21.4	2 x 4	3⅝	15	37.1	0.755	27.0
2 x 4	4	17	42.3	0.733	23.7	2 x 4	4	17	33.6	0.833	29.8
2 x 6	5½	23	30.7	1.008	32.5	2 x 6	5½	23	24.4	1.146	40.9
2 x 8	7¼	30	23.3	1.329	42.9	2 x 8	7¼	30	18.5	1.510	53.9
2 x 10	9¼	39	18.3	1.696	54.7	2 x 10	9¼	39	14.5	1.927	68.8
Package Net Weight: 31 lbs. / Min. Density: 2.2 lbs/ft <sup>3</sup>						Package Net Weight: 28 lbs. / Min. Density: 2.5 lbs/ft <sup>3</sup>					

**Blowing Machine:** Required — Fiber agitation and conditioning with air pressure control

1. Machine speed — per manufacturer's recommendation
2. Slide gate — start with 1/3 to 1/2 open
3. Air pressure — 2.0 to 2.4 psi (55" to 66" of H<sub>2</sub>O) (machine back pressure end of insert tube)
4. Transmission (if applicable) — 2nd gear

**Blowing Hose:**

1. Internally corrugated hose required (except for wall insert tube)
2. Smooth transition reducers
3. 10' cavity insert tube:
  - a. 1¼" ID w/ 1/8" wall thickness clear vinyl/plastic tube
  - b. 1½" ID w/ 1/8" wall thickness for larger cavities (2 x 6 or larger)
  - c. 1½" or 2" blow hose inserted into floor/ceiling cavities or large sidewall cavities from the attic

Blowing Hose Assembly									
Machine Outlet Dia.	1st Section	Reduce to	2nd Section	Reduce to	3rd Section	Reduce to	4th Section	Reduce to	5th Section
4"	4" x 0 - 25' then reduce to 3" follow 3" machine outlet set up								
3½"	3½" x 0 - 25' then reduce to 3" follow 3" machine outlet set up								
3"	3" x 50' min.	2½"	2½" x 50'	2"	2" x 50'	1½"	1½" x 10 - 25'	Insert Tube	10'
2½"	2½" x 100' min.	2"	2" x 50'	1½"	1½" x 10 - 25'	Insert Tube	10'		

**Techniques:**

1. Preferred — 1 hole w/ tube inserted upwards
2. Alternative — 1 hole w/ tube inserted downwards or 2 holes with insert tube

**NOTE:** Please ensure you are in compliance with applicable OSHA and EPA regulations on all job sites.

[www.wapcertaininsuccess.com](http://www.wapcertaininsuccess.com)



**ASK ABOUT ALL OF OUR OTHER CERTAINTEED® PRODUCTS AND SYSTEMS:**

ROOFING • SIDING • TRIM • WINDOWS • DECKING • RAILING • FENCE  
INSULATION • GYPSUM • CEILINGS • FOUNDATIONS • PIPE

CertainTeed Corporation  
P.O. Box 860  
Valley Forge, PA 19482

Professional: 800-233-8990  
Consumer: 800-782-8777

[www.certainteed.com/insulation](http://www.certainteed.com/insulation)

© 3/11 CertainTeed Corporation  
30-24-325

Appendix A1.3:  
**Certainteed Optima**

**Documentation for Weatherization / Retrofit**

Specification Sheet, “Optima Fiber Glass Loose-Fill Insulation for Sidewall Reinsulation”

# OPTIMA® Fiber Glass Loose-Fill Insulation for Sidewall Reinsulation

## PRODUCT DESCRIPTION

**Basic Use:** OPTIMA® Fiber Glass Loose-Fill Insulation can be pneumatically installed into existing sidewalls and floored attics. OPTIMA can be used in residential and/or commercial construction as a thermal and acoustical insulation.

**Benefits:** This product is noncombustible, noncorrosive and odor free. In addition, OPTIMA won't settle, contains no chemicals to cause mildew and fungus growth, contains no formaldehyde, provides no sustenance for vermin, contains no asbestos, won't rot or decay and won't retain moisture.

**Composition and Materials:** OPTIMA is unbonded, white, virgin fiber glass insulation designed for pneumatic application.

**Limitations:** The product is designed for use at ambient temperatures in interior (weather protected) locations. Pneumatic equipment must have an effective shredding section, a uniform control feed system and adequate material/air capabilities. Product should be kept dry during shipping, storage and installation. Not to be used for open blow applications.

## INSTALLATION

Installation procedures and techniques must be as recommended by CertainTeed Corporation, using blowing machines approved for fiber glass insulation.

### Preparatory Work:

- Check structural soundness of wall facings. Facings can be damaged by blowing pressure if they are weak or loosely attached.
- Check for symptoms of moisture problems such as blistering paint, mildew, staining, odor, etc., on interior or exterior wall surfaces. Any such problem should be brought to the owner's attention.
- Check for fire stops. If present, they will be at mid-height and holes must be drilled above and below these obstructions.
- Note and mark all areas that must not be drilled (location of wall ducts, vents, recessed cabinets, service panels, etc.).
- Make certain all wall openings through which insulation could enter the house are sealed.

**Method(s):** Two basic methods are recommended for insulating sidewalls with OPTIMA: the directional nozzle method and the insert tube method.

### Method 1 – Directional Nozzle:

- Drill two 1½" or 1¾" diameter holes into each stud cavity, one hole 3' up from the base of the wall and one hole 2' down from the top plates. Don't blow more than 3' down or 2' up from any hole.
- Drill holes into cavities below windows and into cavities above windows when there is no solid header.
- Use 200' of internally corrugated hose stepped down in diameter to a 1¼" to 1½" I.D. nozzle (50' of 3" to 100' of 2½" to 50' of 2" hose). (The nozzle can be fabricated from a metal electrical conduit elbow.)



<b>Product Name</b>	OPTIMA® Fiber Glass Loose-Fill Insulation
<b>Manufacturer</b>	CertainTeed Corporation
<b>Address</b>	P.O. Box 860 Valley Forge, PA 19482-0105
<b>Phone</b>	610-341-7000 • 800-233-8990
<b>Fax</b>	610-341-7571
<b>Website</b>	<a href="http://www.certainteed.com/insulation">www.certainteed.com/insulation</a>

## TECHNICAL DATA

### Applicable Standards

- Model Building Codes – ICC
- New York City – MEA 218-85M
- NYS UFPBC Article 15
- ASTM C764, Type I
- Material Standards:
  - ASTM C764, Mineral Fiber Loose-Fill Thermal Insulation Type 1 – Pneumatic Application Properties:
    - Thermal resistance — ASTM C518 and C687
    - Critical radiant flux — ASTM E970
    - Combustion characteristics — ASTM E136
    - Water vapor sorption — ASTM C1104
    - Odor emission — ASTM C1304
    - Corrosiveness — ASTM C764
    - Fungi resistance — ASTM C1338
    - GREENGUARD Children & Schools Certified™

### Fire Resistance

- Surface Burning Characteristics: ASTM E84
  - Max. Flame Spread Index: 5
  - Max. Smoke Dev. Index: 5
- Noncombustible:
  - ASTM E136 / Meets requirements

### Thermal / Acoustical Properties

- Thermal Performance:
  - Based on 28 lb. bag weight, the following thermal performance is achieved, at a design density of 1.6 PCF, at the weights and coverages specified in the table on the other side. To compensate for framing, the net coverage per bag should be increased by 14% when framing is 16" O.C. or 11% when framing is 24" O.C. for opaque insulatable wall areas.
- Thermal Resistance:
  - In accordance with ASTM C687, the stated R-Values in the table are achieved at weights and coverages specified when insulation is installed with pneumatic equipment in accordance with CertainTeed recommendations.
- Sound Transmission Loss Ratings:
  - The same STC ratings obtained with fiber glass blanket insulation can be estimated for OPTIMA. Refer to CertainTeed's Sound Control Brochure (30-29-121).

### Quality Assurance

CertainTeed's commitment to quality and environmental management has ensured the registration of the Athens, Chowchilla and Kansas City plants to ISO 9001:2000 and ISO 14001:2004 standards.

- Insert nozzle in lower hole first and blow downward, filling cavity up to the level of the hole. Insert nozzle in upper hole and blow downward and then upward until the cavity is completely filled.

In both methods, air pressure must be reduced substantially compared to the open blow technique to ensure that no damage is done to the sidewall. The blowing machine should be equipped with an air relief valve.

The actual setting of the equipment will vary depending on the type of hose, equipment limitations and job conditions. When properly filled, wall cavities should have a nominal density of 1.6 lbs. per cubic foot.

**Method 2 – Insert Tube:**

- Drill a single 2" hole in each stud cavity at mid-height.
- Drill holes into cavities below windows and into cavities above windows when there is no solid header.
- Use 200' of internally corrugated hose (50' of 3" to 100' of 2½" to 50' of 2" hose). The 2" hose is connected to a reducer and then to a 4' length of 1¼" to 1½" I.D. semi-rigid insert tube.
- Push the insert tube downward through the access hole until the length of tube remaining indicates that the end of the tube is a few inches from the bottom of the cavity.
- Begin blowing OPTIMA, gradually withdrawing the insert tube when an increase in back pressure is felt in the tube. Fill the cavity to the level of the hole.

- Push the insert tube upward through the access hole and continue blowing and withdrawing the tube as above.

**Alternate:** Drill a single hole approximately 6" below the top plates in each cavity and use an 8' length of 1¼" to 1½" I.D. insert tube.

**AVAILABILITY AND COST**

Manufactured and sold throughout the United States. For availability and cost contact CertainTeed in Valley Forge, PA at 800-233-8990.

**WARRANTY**

Refer to CertainTeed's Limited Lifetime Insulation Warranty for Blowing Insulation (30-21-1344).

**MAINTENANCE**

No maintenance required.

**TECHNICAL SERVICES**

Technical assistance can be obtained either from the local CertainTeed sales representative, or by calling CertainTeed Sales Support Group at 800-233-8990.

R-Value	Bags Per 1000 sq. ft.	Maximum Net Coverage	Minimum Weight/sq. ft.	Minimum Thickness
To obtain a thermal resistance (R) of:	Bags per 1000 sq. ft. of net area	Contents of bag should not cover more than: (sq. ft.)	Weight per sq. ft. of installed insulation should not be less than: (lbs.)	Installed insulation should not be less than: (in.)
30	34.5	29	0.967	7-1/4
22	26.3	38	0.733	5-1/2
16	18.9	53	0.533	4
15	17.2	58	0.483	3-5/8
14	16.7	60	0.467	3-1/2

For dense packing walls to an air permeance of 3.5 cfm/ft<sup>2</sup> at 50 pascals pressure differential, use a minimum density of at least 2.25 pcf. For more information please see our Dense Packing Brochure (30-24-325).



**ASK ABOUT ALL OF OUR OTHER CERTAINTEED® PRODUCTS AND SYSTEMS:**

ROOFING • SIDING • TRIM • DECKING • RAILING • FENCE • FOUNDATIONS  
GYPSUM • CEILINGS • INSULATION • PIPE

[www.certainteed.com/insulation](http://www.certainteed.com/insulation)

CertainTeed Corporation  
P.O. Box 860  
Valley Forge, PA 19482

Professional: 800-233-8990  
Consumer: 800-782-8777

© 11/12 CertainTeed Corporation  
Code No. 30-24-225

Appendix A2.1:  
**Guardian CWI Plus**

**Documentation on Material Packing**

None available: proper packaging was not available at time of testing; material was provided in generic packaging.



Appendix A2.2:  
**Guardian CWI Plus**

**Documentation for Dense-Packing**

“CWI Plus Technical Installation Guide”

# CWI *Plus*

## Technical Installation Guide

### INTRODUCTION

**CWI Plus** is a premium fiberglass insulation wall injection system designed primarily for residential retrofit applications. The **CWI Plus** system utilizes virgin white no formaldehyde added loose-fill fiberglass insulation injected into existing residential studwall cavities that are either empty or partially filled with old insulation.

The **CWI Plus** system process is very simple: Fill the existing cavities with insulation to help bring the home in line with current residential energy codes. There is no product waste. Energy savings & total home comfort are benefits of installing **CWI Plus**.

In addition, your present loose-fill insulation blowing machine can be converted to the **CWI Plus** system with relative ease at a nominal cost. This conversion is primarily a hose configuration. Your machine can still be used for blowing attics.

This Operating Manual will describe all the aspects of the **CWI Plus** system, from the process and equipment to installation and troubleshooting. A list of approved **CWI Plus** insulation blowing machines & system components is contained in the **EQUIPMENT** section.

Regarding the use of non-electric machines (machines powered by gas, diesel, or PTO), the use of a mechanical blowing machine is not recommended for this type of retrofit wall insulation project. Appropriate equipment must be designed for fiberglass and have an effective shredding sections, a controlled feed section and sufficient air volume to achieve the desired results. Air blowers with no pressure cut-off can create positive displacement of air. **Pressure buildup in the wall cavity may occur causing serious problems.**

### EQUIPMENT

The **CWI Plus** System equipment consists of the following components:

- 1 ea. Fiberglass insulation blowing machine
- 1 ea. 2" => 1" **CWI Plus** Reducing Nozzle
- 150 ft. Ideal spray hose configuration: 3" => 2.5" => 2" (50ft of ea.)
- 1 ea. 2" => 1" metal or poly reducer
- 10 ft. 1" Flexible wall tubing

## Accessories

- Poly film, drop cloths, trash bags
- Duct tape
- Brooms or vacuum
- Extension cord - to power insulation machine & lights
- Hose couplers - to join hose lengths
- Hose reducers - to change hose sizes
- Drill & bit / hole saw
- Hammer drill & bit
- Screwdrivers, utility knife, nail pullers, pry bar
- Ladder / Scaffold
- Safety glasses, ear protection, gloves & dust mask
- Borescope – for observing inside cavities
- Stud Finder Instrument
- Wooden or foam plugs that match the hole saw size
- Patching compounds, adhesives, caulk, texturing materials and putty knives
- Masonry tools

## Approved Equipment List

<u>Insulation Blowing Machine</u>	<u>Source</u>
Stewart 1000, 750, 500 & 350 Series.....	Stewart Energy, Ltd.
InsulMaxx 5000, 4000 & 2000 .....	Spray Insulation Components
Force/2 Force/3, Wasp .....	Intec Corp.
Krendl 1000, 1300, 2000, 2300 .....	Krendl Machine Co.

Regarding the use of non-electric machines (machines powered by gas, diesel, or PTO), the use of a mechanical blowing machine is not recommended for this type of retrofit wall insulation project. Appropriate equipment must be designed for fiberglass and have an effective shredding sections, a controlled feed section and sufficient air volume to achieve the desired results. Air blowers with no pressure cut-off can create positive displacement of air. **Pressure buildup in the wall cavity may occur causing serious problems.**

## JOBSITE

### Carefully Survey the Jobsite

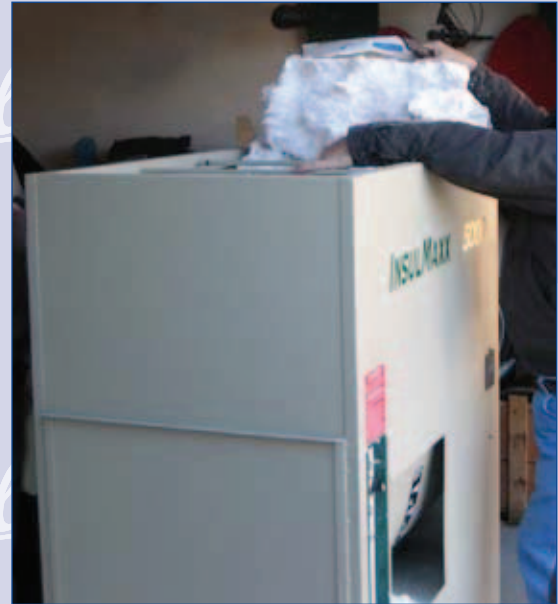
Survey inside and out. This cannot be over-emphasized; shortcuts or complacency in properly surveying the dwelling and the surrounding area can cause serious problems or damage to the residence.

1. Determine if walls are insulated: remove electric cover, dryer vent and / or drill hole in closet.
2. Accurately locate problem obstacles: wiring, plumbing, gas lines, tub enclosures, cold air returns, bulkheads, heat ducts, inset wall heaters & inset medicine cabinets. These are examples, but not all the items you can encounter in the studwalls. In the stud-chases look for structural support blocking & existing insulation.
3. Access considerations: under siding, basement floor plates, soffit, attic & interior.
4. Types of exterior finishes you will encounter: wooden clapboard, vinyl, stucco, brick / stone.

### Document

Create a detailed sketch of the home with locations of all internal utilities and exactly where to drill.

- Determine how to remove siding
- Calculate square footage to be insulated
- Determine material needs
- Identify walls that cannot be insulated, if any
- Calculate time to do entire project
- Calculate plugs required
- Offer interior insulation options to the customer
- Know how to approach all aspects of the project & time required



- Price project
- Photograph the project as it progresses & retain the photos

**With all the important surveying of the home that you need to do, in the end, it's a 'blind blow'. That is, you never see the insulation in the wall.**

Your best visual survey access here is a **Borescope** (a camera with a flexible probe) that can give you a glimpse into each stud cavity through the fill holes before insulating. It's a necessary tool for this work.

You must also consider that this process will place you in active contact with **the homeowner**. Some items to keep in mind:

- Company perception: workers' dress / appearance, truck appearance
- Must arrive on time to the project. May need to be flexible on the time of day this is done.
- Workers able to effectively answer homeowners' questions
- Provide references
- How much disruption is this going to cause the homeowner? Need access inside the home? Where? When? Noise expected?
- Consider a written firm quotation on form or letterhead
- Protect inside of customer's home – if doing an interior fill
- Keep jobsite clean at all times – no fiber blowing around yard
- Never use homeowner's electricity – you will need a generator
- Be sure the homeowner understands what is about to take place & keep him/her informed at all times throughout the insulating process
- Homeowner must make the project decisions – you determine whether you can abide by them before starting. Come to an agreement on how the project is to proceed.
- Do not over-state benefits / results

## SETUP

This section covers the basic equipment setup, job preparation and application of **CWI Plus**. For illustration purposes the application is described at 2.2 lb. / cubic foot density.

Setup approved insulation blowing machine according to manufacturer's specifications.

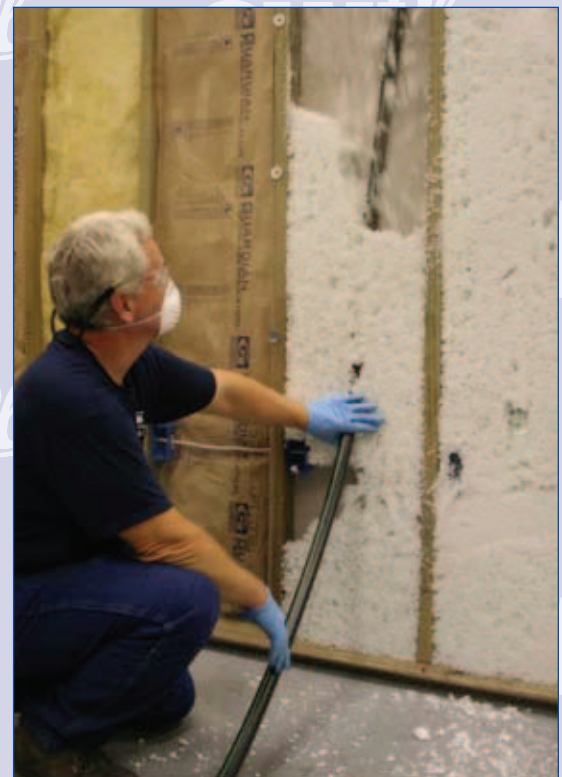
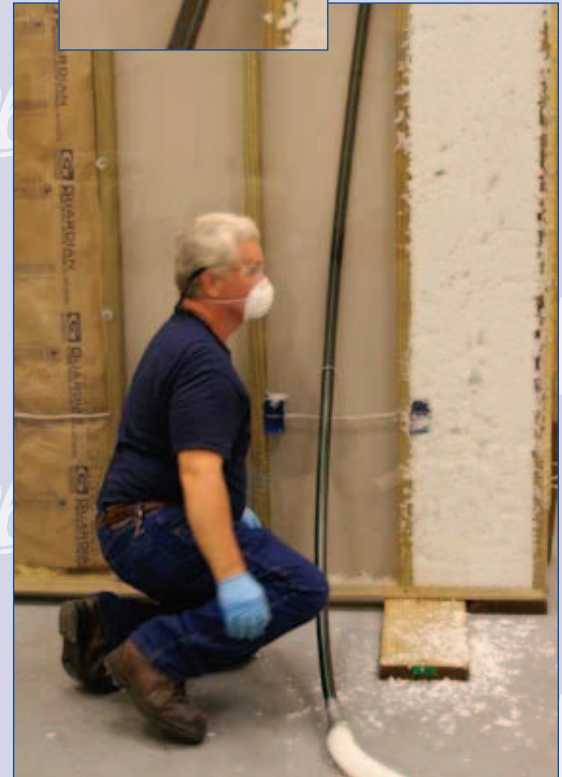
Setup blow hose as indicated below. Next, attach the **CWI Plus** injection nozzle to the end of the 2" blow hose. Be sure it is attached securely.

[Ideal spray hose configuration: 3" => 2.5" => 2" => 1" metal or poly reducer]

The blowing machine feed gate is set to approximately 75% of where it would be set for a typical attic job. On the InsulMaxx 4000 & 5000 machines, use the fiber conditioning card marked 'Reducing Nozzle'.

Hose configuration should be 3" => 2½" => 2" .....all in 50 ft. increments. A hose arrangement of 100 ft. total length is also possible with adequate transition length (10' min.) of each hose diameter listed above.

For tubing walls: Attach tubing, making sure tubing is long enough to reach the top of the wall from the drilled hole.



## BLOWING / INSTALLATION

Closed cavity applications can be difficult to judge material usage during installation since fiberglass is compression filled in the cavity.

It is recommended that material usage be monitored as the job progresses, so that the proper number of bags is being installed.

Material feed rate should be approximately 1 bag of **CWI Plus** every 5 min.

Be sure the fiberglass insulation blowing machine is adjusted to all the recommended settings for operation.

### TUBING: (1" ABS Plastic Irrigation Tubing)

#### Primary Installation Method

- Drill a 2.5" hole 25" from bottom of wall – typically above most wiring. Use wire to locate next stud. Repeat procedure around house.
- Insert Borescope scope & observe cavity interior
- Insert tube (1" plastic tubing) through 2.5" opening – pushing tube up to top plate. Mark this distance on the tube with duct tape. Spray paint last 2" of tube to indicate when it's nearly out of the hole.
- Hold tube against the wall to ensure you've reached the top. If you cannot reach the top, you must drill another hole higher up – above the obstruction.
- Insert tube through 2.5" hole – push it to the top – then back the hose out 6". This allows room for the insulation to flow from the hose.
- Turn machine on & watch material flow
- Filling cavity will take about 60 – 90 seconds
- Remove tube about 8" -10" as material flow slows
- Repeat until cavity is completely full

#### TUBING – From Top & Bottom Plates

##### Top Plate

- Drill a 1¼" hole in the top plate from attic
- Insert the tube down the cavity to the bottom – then retract 8" – 10"
- Slowly retract tube as cavity fills - until full

##### Bottom Plate

- Must have crawl space or basement access
- Drill a 1¼" hole in the bottom plate
- Insert the tube up the cavity to the top – then retract 8" – 10"
- Slowly retract tube as cavity fills - until full

#### DRILL & FILL (Straight Hole)

- This method will not work if there is some insulation already in the wall
- Use this method only if tubing is not feasible
- Drill minimum 3 equidistant holes per 8-ft. cavity
- Insert Borescope & observe cavity interior
- Again, watch for wall interior utilities

#### AFTER INSULATING – PATCHING & PLUGGING

- Use foam or wooden plugs to seal all fill holes
  - Tap into place with a hammer
  - Seal with caulk or patching compound
- Carefully replace siding on exterior applications
- Inspect project: outside, inside, attic & basement to identify any breaches



## CLEANUP

This is an important step that is sometimes overlooked or not given proper attention in various types of insulation applications. Proper presentation and complete clean-up gives a professional appearance to the job and focuses the attention of the homeowner on how good the **CWI Plus** project looks once it's installed. It helps reduce the possibility of a 'call-back'. Remember: Perception is reality.

- Sweep entire house and properly discard waste.
- Be sure all debris outside the home is gathered-up and disposed of properly. Do not use the homeowner's trash bins.
- Do a final walk-through to ensure the job looks good and is complete and that nothing has been overlooked or left behind.
- Notify the customer that the job is complete.

## CWI Plus Product & System Benefits

Product Benefits	System Benefits
• Class A fire rating	• 2-3 times more fiberglass in walls when compared to standard building insulation
• No formaldehyde added	• Improved thermal performance
• Excellent coverage per bag	• Excellent sound control properties
• Short fiber allows faster install	• Reduced air infiltration
• Virtually eliminates gaps and voids	
• Non-corrosive	
• Pest resistant	

CWI Plus complies with ASTM C 764 Type 1 requirements with includes the following test methods:

- |               |  |
|---------------|--|
| • ASTM C 518  | Thermal Performance                                  |
| • ASTM E 136  | Combustion Characteristics                           |
| • ASTM E 84   | Surface Burning, Flame Spread 0, Smoke Developed < 5 |
| • ASTM C 1104 | Water Vapor Sorption                                 |
| • ASTM C 1304 | Odor Emission  |
| • Sect 12.7   | Non-Corrosive  |
| • ASTM C 1338 | Fungi Resistance                                     |



## TROUBLESHOOTING

In this section we try to provide solutions to problems we've encountered in the development process of **CWI Plus**. We stay product-specific, working to solve difficulties exclusive to the application of **CWI Plus**. While we cover many aspects of the operation, we assume in this section that the owner and/or operator have knowledge of properly operating, maintaining, and troubleshooting an insulation blowing machine and all its typical components. In addition, we do not address troubleshooting the operation of the insulation equipment or power generator. Those respective equipment manufacturers should be consulted for that information.

### Problem: Difficulty installing tube into wall

**Cause:** Hole drilled too small

**Solution:** Drill larger hole.

**Cause:** Tubing end angle cut incorrectly

**Solution:** Cut end of tube to approximately 45° angle

**Cause:** Tubing kinked or bent as a result catching on wall interior obstructions

**Solution:** Replace tube & rotate tube as it is inserted into the wall

### Problem: Taking too much time to fill cavity

**Cause:** Breach in cavity & fiber flowing to an unwanted area

**Solution:** Locate & repair breach

**Cause:** Inadequate fiber flow through hose

**Solution:** Increase product gate opening on machine (in small increments)

### Problem: Interior or exterior wall bursts

**Cause:** Wall inadequately attached

**Solution:** Re-fasten wall with nails or screws

**Cause:** Using incorrect insulation machine with a positive-displacement air blower.

**Solution:** Use correct machine with an electric blower or backpressure cutoff (Stewart only)

**Cause:** Incorrect application (drill & fill nozzle vs. tubing)

**Solution:** Adjust accordingly

### Problem: Continually drilling into interior wall obstacles

**Cause:** Drilling pattern

**Solution:** Adjust drilling pattern (up, down or to the side)

### Problem: Material not moving in hose

**Cause:** Material plugged at end of tube

**Solution:** Remove tube & remove obstruction in tube

**Cause:** Excess material flow

**Solution:** Empty hose & close machine product feed gate

**Cause:** Air leakage

**Solution:** Empty hose & ensure no air is leaking from around all hose connections. (use hose clamps & duct tape)

**Cause:** Worn machine airlock seals

**Solution:** Replace seals

## APPENDIX

### Equipment Vendors

- Krendl Machine Co.  
1201 Spencerville Ave.  
Delphos, OH 45833  
Ph: 419.692.3060  
[www.krendlmachine.com](http://www.krendlmachine.com)
- Intec Corp.  
3771 Monarch St.,  
P.O. Box 579  
Frederick, CO 80530  
Ph: 303.466.1611  
[www.inteccorp.com](http://www.inteccorp.com)
- Stewart Energy Group  
Brackley Grange  
Halse Road  
Brackley, Northamptonshire  
NN13 6FA United Kingdom  
Ph. 011.44.1280.700.550  
[ian@stewart-energy.com](mailto:ian@stewart-energy.com)
- Spray Insulation Components  
8000 Wilshire Ct. Ste. G  
Oklahoma City, OK 73132  
Ph. 800.210.1311 / 405.722.9292  
[www.sprayinsulation.com](http://www.sprayinsulation.com)

Reducing Nozzle: Spray Insulation Components

Copyright© 2010 Guardian Building Products  
This document may not be reproduced either in whole or in part without written permission from Guardian Building Products



979 Batesville Rd, Greer, SC 29651  
800-569-4262 · 864-297-6101  
[www.guardianbp.com](http://www.guardianbp.com)



Appendix A2.3:  
**Guardian CWI Plus:**

**Documentation for Weatherization / Retrofit**

None found.

Appendix A3.1:  
**Johns Manville Spider**

**Documentation from Material Packaging**



# spider

CUSTOM INSULATION SYSTEM



## Spray Applied Blowing Wool

Nominal Net Weight 30 lbs.  
U.S. PATENTS PENDING



### Exterior Wall Coverage for Spray Applied and BIBS® Applications

Net Package Weight 30 lbs.  
**Area de recubrimiento para pared exterior, utilizando aplicaciones de rocío y de BIBS®**  
Peso neto por paquete 30 libras

Thermal Resistance R-value Resistencia al flujo calórico Valor R	Cavity Depth/ Installed Thickness Espesor instalado/ Espesor de la cavidad Pulgadas	Minimum Installed Density Densidad mínima instalada libras/ft³	Minimum Weight Per Unit Area Suav <sup>®</sup> Concentración mínima por área libras/ft²	Minimum Net Coverage Cobertura Área neta de recubrimiento ft²/cuadra	Bags Per 1000 ft²
13	3.5	1.0	0.29	102.9	3.7
20	3.5	1.4	0.41	65.9	15.3
14	3.5	1.8	0.53	46.8	19.8
22	5.5	1.0	0.29	102.9	3.7
15	5.5	1.4	0.41	65.9	15.3
23	5.5	1.8	0.53	46.8	19.8

\*BIBS® = Blow-In Blanket® System Sistema de Manta de Fibra de Vidrio al Sopleo

#### R-Value

R-value resistance to heat flow. The higher the R-value, the greater the insulating power. To get the marked R-value, it is essential that this insulation be installed properly. If you do it correctly, get maximum and better than expected performance. Do not cover with this package.

#### REGULATORY COMPLIANCE

- For residential applications:
  - ASTM F 703
  - ASTM F 703
  - International Code Council (ICC) International Residential Code (IRC) Section R-10
  - International Code Council (ICC) International Building Code (IBC) Section 703.5.1
  - International Code Council (ICC) International Energy Conservation Code (IECC) Section 703.5.1
- For commercial applications:
  - ASTM F 703
  - International Code Council (ICC) International Building Code (IBC) Section 703.5.1
  - International Code Council (ICC) International Energy Conservation Code (IECC) Section 703.5.1

#### WARNING

- **DO NOT BREATH!**
- Laminar flow blower used only for blowing. Do not touch.
- Do not touch insulation until it is at least 1 foot from the side of blower. Do not touch until it is at least 1 foot from the side of blower. Do not touch until it is at least 1 foot from the side of blower.
- Do not touch insulation until it is at least 1 foot from the side of blower. Do not touch until it is at least 1 foot from the side of blower.
- Do not touch insulation until it is at least 1 foot from the side of blower. Do not touch until it is at least 1 foot from the side of blower.

#### PRECAUTIONARY MEASURES

- Avoid breathing the glass dust and contact with skin or eyes. Use a NIOSH certified respirator or equivalent that requires airtight fit and proper use.
- When long-term, loose filling, blowing, blowing and eye protection.
- Avoid contact with eyes, nose, mouth, throat and skin. Use eye protection.
- Operate each air blowing blower, use and spraying eye protection.
- Avoid contact with eyes, nose, mouth, throat and skin. Use eye protection.
- Avoid contact with eyes, nose, mouth, throat and skin. Use eye protection.

For additional information regarding regulations, medical and scientific research on glass fibers, refer to other Blowing Wool Product Information Center or www.jm.com  
P.O. Box 5108, Denver, Colorado, 80211-5108  
U.S. or Canada 800-456-4566 or call collect 303-678-4866

**JM**  
Johns Manville  
© 2004 Building Insulation Division  
P.O. Box 5108  
Denver, CO 80217-5108

#### Valor-R

Impedancia conductiva al flujo calórico. Cuanto mayor sea el valor R, mayor será el poder de aislamiento. Para lograr el marcado valor R, es esencial que esta insulación sea instalada correctamente. Si la hace usted mismo, obtenga rendimiento y mejores resultados. No cubra con este paquete.

#### COMPLIANCE DE LAS CERTIFICACIONES

- Para aplicaciones residenciales:
  - ASTM F 703
  - ASTM F 703
  - International Code Council (ICC) International Residential Code (IRC) Section R-10
  - International Code Council (ICC) International Building Code (IBC) Section 703.5.1
  - International Code Council (ICC) International Energy Conservation Code (IECC) Section 703.5.1
- Para aplicaciones comerciales:
  - ASTM F 703
  - International Code Council (ICC) International Building Code (IBC) Section 703.5.1
  - International Code Council (ICC) International Energy Conservation Code (IECC) Section 703.5.1

#### ADVERTENCIA

- **¡NO RESPIRE!**
- Solo para el sopleo. No tocar.
- No tocar la insulación hasta que esté a al menos 1 pie del lado de la máquina. No tocar la insulación hasta que esté a al menos 1 pie del lado de la máquina.
- No tocar la insulación hasta que esté a al menos 1 pie del lado de la máquina. No tocar la insulación hasta que esté a al menos 1 pie del lado de la máquina.
- No tocar la insulación hasta que esté a al menos 1 pie del lado de la máquina. No tocar la insulación hasta que esté a al menos 1 pie del lado de la máquina.

#### MEASURAS DE SEGURIDAD DEL PRODUCTO

- Evitar respirar la fibra de vidrio y el contacto con la piel o los ojos. Use una máscara, respirador o equivalente certificado por NIOSH que requiera un ajuste perfecto y un uso adecuado.
- Evitar el contacto con los ojos, la nariz, la boca, la garganta y la piel. Use protección para los ojos.
- Evitar el contacto con los ojos, la nariz, la boca, la garganta y la piel. Use protección para los ojos.
- Evitar el contacto con los ojos, la nariz, la boca, la garganta y la piel. Use protección para los ojos.
- Evitar el contacto con los ojos, la nariz, la boca, la garganta y la piel. Use protección para los ojos.

#### PRECAUCIONES

- Evitar respirar la fibra de vidrio y el contacto con la piel o los ojos. Use una máscara, respirador o equivalente certificado por NIOSH que requiera un ajuste perfecto y un uso adecuado.
- Evitar el contacto con los ojos, la nariz, la boca, la garganta y la piel. Use protección para los ojos.
- Evitar el contacto con los ojos, la nariz, la boca, la garganta y la piel. Use protección para los ojos.
- Evitar el contacto con los ojos, la nariz, la boca, la garganta y la piel. Use protección para los ojos.
- Evitar el contacto con los ojos, la nariz, la boca, la garganta y la piel. Use protección para los ojos.

Para obtener información adicional sobre las regulaciones y los requisitos de instalación, consulte el Centro de Información de Productos de Blowing Wool o www.jm.com  
P.O. Box 5108, Denver, Colorado, 80211-5108  
U.S. or Canada 800-456-4566 or call collect 303-678-4866

Keep out of reach of children





# Spray Applied Blowing Wool

## Nominal Net Weight 30 lbs.

U.S. PATENTS PENDING



### Exterior Wall Coverage for Spray Applied and BIBS® Applications

Net Package Weight: 30 lbs.

### Area de recubrimiento para pared exterior, utilizando aplicaciones de rocío y de BIBS®

Peso neto por paquete: 30 libras

Thermal Resistance R-value Resistencia al flujo calórico Valor R	Cavity Depth/Installed Thickness Espesor instalado/Espacio de la cavidad Pulgadas	Minimum Installed Density Densidad mínima instalada libras/p <sup>3</sup>	Minimum Weight Per Unit Area Concentración mínima por área libras/p <sup>2</sup>	Maximum Net Coverage ft <sup>2</sup> /bag Area neta de recubrimiento p <sup>2</sup> /bolsa	Bags Per 1000 ft <sup>2</sup> Bolsas por cada 1000 p <sup>2</sup>
13	3.5	1.0	0.29	102.9	9.7
20	5.5	1.0	0.46	65.5	15.3
14	3.5	1.4	0.41	73.5	13.6
22	5.5	1.4	0.64	46.8	21.4
15	3.5	1.8	0.53	57.1	17.5
23	5.5	1.8	0.83	36.4	27.5

\* BIBS = Blow-In Blanket® System; Sistema de Manto de Fibra de Vidrio al Sopleo

FOR SHIPMENT STATUS  
GO TO WWW.JM.COM  
626-306530-7

R-Value

Valor-R

\*R means resistance to heat flow. The higher the R-value, the greater the insulation. Cuento más alto sea el valor-R, mayor será el poder

Appendix A3.2a:  
**Johns Manville Spider**

**Documentation for Dense-Packing**

Sell Sheet, "JM Spider Blown-In Fiber Glass"



## JM SPIDER<sup>®</sup> BLOW-IN FIBER GLASS

### “DENSE-PACK” APPLICATION

JM Spider insulation offers many big advantages over cellulose in drill-and-fill applications. Incredibly easy to install, it’s convenient and saves time, while offering superior thermal and acoustical performance.

JM Spider insulation also provides up to 30% better airflow resistance than cellulose when installed at recommended densities for site-built construction. Our unique design enables the fibers to more effectively fill tight spaces around pipes, wires and electrical boxes. For example, JM Spider insulation will fill 2x4 cavities up to an impressive R-15 thermal rating and 2x6 cavities up to R-24. In addition, since fiber glass is naturally mold resistant, it does not encourage the growth of mold or mildew.

### WHY JM SPIDER?

#### Small Fiber Diameter:

- Superior thermal and acoustical performance
- Provides higher airflow resistance vs. cellulose

#### Small Nodule Size:

- Allows insulation to easily flow around obstacles within a wall cavity
- Allows for complete and uniform cavity fill
- Allows for use of small-diameter application hoses and mortar tools
- Minimizes potential for equipment plugging
- Won’t lose R-value due to natural convection

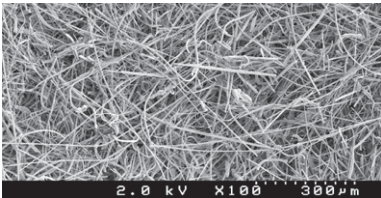
### PERFORMANCE ADVANTAGES

- Won’t support mold growth
- Won’t rot or decompose
- Noncorrosive
- Noncombustible
- Won’t hold moisture
- Won’t lose R-value with age
- Primarily composed of sand, a rapidly renewable resource
- Low dust, no itch, won’t burn skin or eyes
- Made without formaldehyde
- Works with most types of blowing machines designed to process fiber glass insulation
- High coverage per bag
- Dry installation (no binder required)
- Uniform dense-pack cavity fill
- Won’t settle
- Contains no plastic, cardboard or other noninsulating debris
- Minimal chemical additive content; contains no acidic fire-retardant chemicals
- Safe to use and install (contact JM for Fiber Glass Health Indemnity Agreement information)
- Contains at least 25% recycled glass (5% pre-consumer, 20% post-consumer)

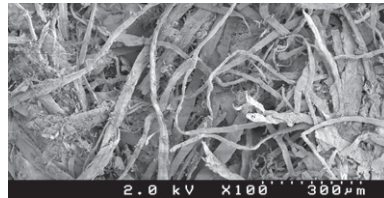
Specification Comparison	JM Spider	Cellulose		
Installed Density, pcf*	2.2	3.5	3.7	4.0
Bag Weight, lbs	30	30	30	30
Coverage @ 3.5", ft <sup>2</sup> /bag	47	29	28	26
Advertised R-value @ 3.5"	15	13	13	13
Tested R-value @ 3.5"	15.1	12	11.9	11.7
Airflow Resistance (lb/ft <sup>2</sup> )/(ft <sup>3</sup> /s)	46	22	26	33
Air Permeance, cfm/ft <sup>2</sup> @ 50 Pa	2.3	4.4	3.5	2.6

\*The recommended installed dense-pack density for JM Spider is 2.2 pcf for drill-and-fill application. Typical installed dense-pack densities for cellulose range from 3.0 to 3.5 pcf; some weatherization agencies recommend 4.0 pcf to improve airflow resistance.

## X100 SEM PHOTOMICROGRAPHS



JM Spider Fiber

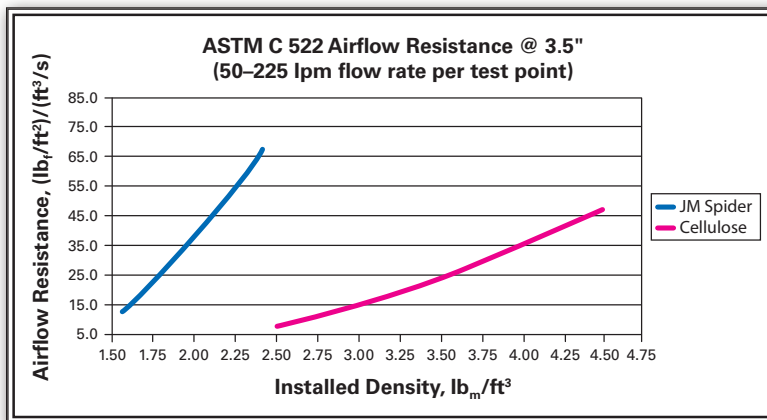


Cellulose Fiber

## FINER FIBER = BETTER AIRFLOW RESISTANCE, BETTER THERMAL PERFORMANCE

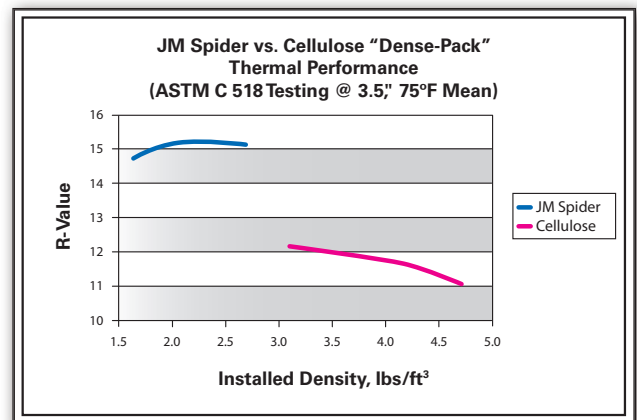
Fine-diameter JM Spider fiber creates a tortuous path for heat and airflow, resulting in high thermal and airflow resistance. JM Spider fiber is also very effective at scattering and absorbing IR radiation, which further improves R-value. Coarse-fiber cellulose has more direct airflow passages and poorer IR blocking capability, which results in less resistance to heat and airflow.

### ASTM C 522 AIRFLOW RESISTANCE @ 3.5" DENSE-PACK APPLICATION (50–225 lpm flow rate per test point)



JM Spider has higher airflow resistance than cellulose.

### JM SPIDER VS. DENSE-PACK CELLULOSE THERMAL PERFORMANCE (ASTM C 518 Testing @ 3.5", 75°F mean)



JM Spider provides 4.3 R-value per inch (R-15 @ 3.5").

## JM SPIDER FIBER GLASS COMPLIANCE

ASTM C764, ASTM E84, CAN/ULC S-702, CAN/ULC S-102, ULC S-129, ASTM C1149

## HOW TO GET STARTED

Visit [specJM.com/retrofit](http://specJM.com/retrofit) or call (800) 654-3103 to learn more about JM Spider products, applications, training opportunities and additional resources.

Distributed by:



**Johns Manville Insulation Systems**  
 717 17th Street (80202)  
 P.O. Box 5108  
 Denver, CO 80217-5108  
 (800) 654-3103  
 JM.com

BIC-697 04/10 © 2010 Johns Manville. Printed in USA.

Appendix A3.2b:  
**Johns Manville Spider**

**Documentation for Dense-Packing**

Spec Sheet, “Dense Pack JM Spider Insulation for Drill and Fill”





**JM FORMALDEHYDE-FREE™ FIBER GLASS INSULATION**

JM Formaldehyde-free™ fiber glass building insulation offers the thermal and acoustical performance you expect from fiber glass—and it improves indoor air quality because it’s made without formaldehyde. Why is that important? Because reducing overall formaldehyde levels in the home creates a healthier living environment, and choosing JM Formaldehyde-free™ insulation is one way of achieving that goal. JM offers a complete line of Formaldehyde-free™ fiber glass building insulation. Visit specJM.com or JMhomeowner.com for more information.

**PRODUCT DESCRIPTION**

JM Spider insulation offers many big advantages over cellulose in drill-and-fill applications. Incredibly easy to install, it’s convenient and saves time, while offering superior thermal and acoustical performance. JM Spider insulation also provides up to 30 percent better airflow resistance than cellulose when installed at recommended densities for site-built construction. Our unique design enables the fibers to more effectively fill tight spaces around pipes, wires and electrical boxes. For example, JM Spider insulation will fill 2x4 cavities up to an impressive R-15 thermal rating and 2x6 cavities up to R-24. In addition, because fiber glass is naturally mold resistant, it does not encourage the growth of mold or mildew.

**APPLICATIONS**

*Exterior Walls – Drill and fill through:*

- Lap wood and shipboard siding
- Wood-based sheet siding (particle board, plywood, etc.)
- Masonry (brick, stone or block)
- Vinyl of other non-wood siding (metal, etc.)
- Stucco

*Interior Walls – Drill and fill through:*

- Gypsum board
- Plaster/lath
- Stucco
- Tile/masonry

JM Spider insulation also works for weatherization of other exterior cavities such as bonus room floors, cantilevered areas and cathedral ceilings that do not require venting. For these closed cavities, follow the same installation procedures as walls. For open cavities such as floors over crawl spaces, dense pack JM Spider fiber behind netting. (For crawl space floors, be sure to consult the local code requirements for vapor retarders and contact BIBCA if you need information and training on dense packing JM Spider insulation behind netting.) It’s also a good idea to install JM Spider insulation in interior walls that contain supply plumbing and PVC waste drains to significantly reduce unwanted noise. Contact your local JM sales representative for availability of JM Spider insulation. Visit specJM.com for additional information, including information on installing.

**RECOMMENDED STORAGE AND TRANSPORT**

Store insulation indoors. Keep insulation clean and dry at all times. When transporting, cover completely with a waterproof tarpaulin as necessary.

**SPECIFICATION COMPLIANCE**

JM Spider insulation meets ASTM C764, “Standard Specification for Mineral Fiber Loose-Fill Thermal Insulation.” JM Spider system meets all building code fire test requirements for concealed and exposed insulation. (See following page for a complete list of test results.)

**PACKAGING**

JM Spider fiber glass insulation is available in 30-lb. bags.

**SHORT FORM SPECIFICATIONS**

All insulation shown on drawings or specified herein shall be Dense Packed JM Spider® Fiber as manufactured by Johns Manville. Thermal resistance “R” (RSI) values of the insulation shall be R (RSI) \_\_\_\_\_ in ceilings, R (RSI) \_\_\_\_\_ in walls and R (RSI) \_\_\_\_\_ in floors over unheated spaces.

**LIMITATIONS OF USE**

Check applicable building codes.

# Dense Pack JM Spider® Insulation

for Drill and Fill



**PERFORMANCE ADVANTAGES**

- Improves indoor air quality – because it’s made without formaldehyde.
- Energy efficient – provides superior resistance to heat transfer with R-values up to R-15 in a 2x4 cavity.
- Completely fills the cavity and does not settle—the small nodules of fiber glass are resilient and do not deteriorate or lose performance with time.
- Controls sound – reduces transmission of sound through exterior and interior walls and floor/ceiling assemblies. See the JM Spider insulation Acoustical Performance Advantages sheet (BID-0080) for details.
- Easy to install – installs at a rate per cavity similar to dense-packed cellulose with significantly less plugging and less dust.
- Mold and mildew resistant – fiber glass is naturally mold resistant.
- Fire resistant and noncombustible
- Noncorrosive – does not accelerate corrosion of pipes, wiring or metal studs.
- Durable – will not rot, mildew or otherwise deteriorate. JM Spider insulation will not hold moisture or permanently lose R-value.
- Small nodule or tuft size allows the product to easily flow around obstacles, such as wiring, and through small-diameter mortar tools.
- Higher installed R-value per inch vs. cellulose (typically more than 20 percent higher R value up to R-4.3 per inch).
- Works with most types of blowing machines designed to process fiber glass insulation.
- Provides significantly higher airflow resistance than cellulose (per ASTM C522 measurements).

# Dense Pack JM Spider® Insulation

for Drill and Fill

Visit us at [specJM.com](http://specJM.com)  
Or call: (800) 654-3103

## TEST DATA

Test Method	Results	Test Method	Results
ASTM E84 and CAN/ULC S102.2 <i>Surface Burning</i>	Flame spread less than 25, smoke developed less than 50	ASTM C764 <i>Corrosiveness</i>	No greater than sterile cotton for steel, copper, aluminum
ASTM E136 <i>Combustion Characteristics</i>	Pass, indicating noncombustible material	ASTM C518 <i>Thermal Performance – Heat Flow Meter</i>	See coverage chart for standard R-values
ASTM E970 <i>Critical Radiant Flux</i>	Greater than 0.12 w/sq cm, passing for exposed attic installation	ASTM C1104/C1104M <i>Water Vapor Sorption</i>	5% or less by weight
ASTM C1338 <i>Fungi Resistance of Insulation Materials</i>	Pass, with no growth	ASTM C1304 <i>Odor Emission</i>	No objectionable odor
ASTM G21 <i>Fungi Resistance of Synthetic Polymeric Materials</i>	Pass, with no growth	ES Section 01350 <i>VOC Emissions</i>	Pass, with no hazardous emissions

## JM SPIDER PREMIUM FIBER GLASS BLOWING WOOL INSULATION NOMINAL 30-LB. BAG COVERAGE CHART FOR CLOSED CAVITY APPLICATION

Thermal Resistance	Cavity Depth/ Insulation Thickness	Installed Density	Minimum Weight per Area	Number of Bags per 1,000 Sq. Ft.	Maximum Coverage per Bag
R-value	inches	lbs/ft <sup>3</sup>	lbs/ft <sup>2</sup>	bags	ft <sup>2</sup> /bag
14.8	3.50 <i>(normal 2x4)</i>	1.8	0.525	17.5	57.1
15.0		2.0	0.583	19.4	51.4
15.1		2.2	0.642	21.4	46.8
15.2		2.4	0.700	23.3	42.9
15.3		2.6	0.758	25.3	39.6
23.3	5.50 <i>(normal 2x6)</i>	1.8	0.825	27.5	36.4
23.6		2.0	0.917	30.6	32.7
23.8		2.2	1.008	33.6	29.8
23.9		2.4	1.100	36.7	27.3
24.1		2.6	1.192	39.7	25.2

The coverage per bag shown in the above chart is for the unframed area (cavities only) and does not account for the space taken up by wall studs, plates, headers, corners, window framing, etc. Depending on the construction details in a given structure, gross coverage for the overall wood-framed wall area may vary.

Technical specifications as shown in this literature are intended to be used as general guidelines only. The physical and chemical properties of JM Spider insulation listed here in represent typical, average values obtained in accordance with accepted test methods and are subject to normal manufacturing variations. They are supplied as a technical service and are subject to change without notice. Any references to numerical flame-spread or smoke-developed ratings are not intended to reflect hazards presented by these or any other materials under actual fire conditions. Check with the sales office nearest you for current information. All Johns Manville products are sold subject to Johns Manville's Limited Warranty and Limitation of Remedy. For a copy of the Johns Manville Limited Warranty and Limitation of Remedy or for information on other Johns Manville thermal and acoustical insulation and systems, call the 800 number or write to the address, both listed below.



5% Pre-consumer  
20% Post-consumer  
SCIENTIFIC CERTIFICATION SYSTEMS  
SCS-MC-01073



Distributed by:

**Johns Manville  
Insulation Systems**  
717 17th Street  
Denver, CO 80202  
(800)-654-3103  
[specJM.com](http://specJM.com)

Appendix A3.3:  
**Johns Manville Spider**

**Documentation for Weatherization / Retrofit**

None Found.

Appendix A4.1:  
**Knauf EcoFill Wx**

**Documentation from Packaging**

**KNAUF INSULATION**

**ECOFILL** *Wx*

**3384**

**OPEN ATTIC APPLICATION**

R-Value*	Height of Rafter Joist Spacing	Minimum Coverage	Maximum Weight	Insulated Thickness	Uninsulated Thickness
R-4.0	16.0"	10.5 SF	895 LB/S	20.00"	25.00"
R-4.0	24.0"	17.0 SF	791 LB/S	18.00"	18.00"
R-4.8	24.0"	17.0 SF	895 LB/S	15.00"	15.00"
R-4.8	16.0"	10.5 SF	791 LB/S	13.00"	13.00"
R-5.6	16.0"	10.5 SF	458 LB/S	8.00"	8.00"
R-5.6	24.0"	17.0 SF	384 LB/S	6.00"	6.00"
R-6.4	16.0"	10.5 SF	384 LB/S	7.00"	7.00"
R-6.4	24.0"	17.0 SF	384 LB/S	4.00"	4.00"
R-7.2	16.0"	10.5 SF	198 LB/S	4.00"	4.00"
R-7.2	24.0"	17.0 SF	198 LB/S	4.00"	4.00"

**CAUTION**  
Insulation should not be blown over "hot" generating fixtures. Above a recessed fluorescent or incandescent light fixture, use all Type C light fixtures.

**FRUIT AD**  
Do not use EcoFill in areas where it will be in contact with food or food preparation surfaces. Do not use EcoFill in areas where it will be in contact with food or food preparation surfaces.

**PRECAUTIONS**  
This product is not intended for use in areas where it will be in contact with food or food preparation surfaces. Do not use EcoFill in areas where it will be in contact with food or food preparation surfaces.

**COMPLIANCE**  
This product complies with the performance requirements of ASTM C 155, Type I, and Federal Specification 481-1008, Class B. The product is also compliant with the requirements of ASTM C 155, Type II, and Federal Specification 481-1008, Class B.

**EQUIPO NECESARIO**  
Este producto debe aplicarse con una máquina inyectora mecánica de alta presión. Se requiere un equipo de protección personal (EPP) que incluya: casco, guantes, gafas de seguridad y ropa protectora. No se debe aplicar en áreas donde se encuentre comida o superficies de preparación de alimentos.

**CUMPLIMIENTO DE LAS ESPECIFICACIONES**  
Este producto cumple con los requisitos de rendimiento de ASTM C 155, Tipo I, y Especificación Federal 481-1008, Clase B. El producto también cumple con los requisitos de ASTM C 155, Tipo II, y Especificación Federal 481-1008, Clase B.

**PRECAUCIONES**  
Este producto no debe aplicarse en áreas donde se encuentre comida o superficies de preparación de alimentos. No se debe aplicar en áreas donde se encuentre comida o superficies de preparación de alimentos.

**PRIMERS AUXILIOS**  
Este producto se aplica con una máquina inyectora mecánica de alta presión. Se requiere un equipo de protección personal (EPP) que incluya: casco, guantes, gafas de seguridad y ropa protectora. No se debe aplicar en áreas donde se encuentre comida o superficies de preparación de alimentos.

**PRECAUCIONES**  
Este producto no debe aplicarse en áreas donde se encuentre comida o superficies de preparación de alimentos. No se debe aplicar en áreas donde se encuentre comida o superficies de preparación de alimentos.

**LA FIBRA DE VIDRIO Y EL MOJGO**  
Este producto está hecho de fibra de vidrio y puede causar irritación en los ojos, la nariz y la garganta. Use un equipo de protección personal (EPP) que incluya: casco, guantes, gafas de seguridad y ropa protectora. No se debe aplicar en áreas donde se encuentre comida o superficies de preparación de alimentos.

**INGREDIENTES**  
Este producto está hecho de fibra de vidrio y otros materiales. No contiene asbestos o amianto. No se debe aplicar en áreas donde se encuentre comida o superficies de preparación de alimentos.

**CONTRACTOR'S STATEMENT**  
This insulation has been installed in accordance with the manufacturer's recommendations to provide R-value of \_\_\_\_\_ sq. ft. of insulation to cover \_\_\_\_\_ sq. ft. of area of a structure's exterior.

**CONTRACTOR'S STATEMENT**  
This insulation has been installed in accordance with the manufacturer's recommendations to provide R-value of \_\_\_\_\_ sq. ft. of insulation to cover \_\_\_\_\_ sq. ft. of area of a structure's exterior.

**CONTRACTOR'S STATEMENT**  
This insulation has been installed in accordance with the manufacturer's recommendations to provide R-value of \_\_\_\_\_ sq. ft. of insulation to cover \_\_\_\_\_ sq. ft. of area of a structure's exterior.

**CONTRACTOR'S STATEMENT**  
This insulation has been installed in accordance with the manufacturer's recommendations to provide R-value of \_\_\_\_\_ sq. ft. of insulation to cover \_\_\_\_\_ sq. ft. of area of a structure's exterior.

**CONTRACTOR'S STATEMENT**  
This insulation has been installed in accordance with the manufacturer's recommendations to provide R-value of \_\_\_\_\_ sq. ft. of insulation to cover \_\_\_\_\_ sq. ft. of area of a structure's exterior.

**CONTRACTOR'S STATEMENT**  
This insulation has been installed in accordance with the manufacturer's recommendations to provide R-value of \_\_\_\_\_ sq. ft. of insulation to cover \_\_\_\_\_ sq. ft. of area of a structure's exterior.

**CONTRACTOR'S STATEMENT**  
This insulation has been installed in accordance with the manufacturer's recommendations to provide R-value of \_\_\_\_\_ sq. ft. of insulation to cover \_\_\_\_\_ sq. ft. of area of a structure's exterior.

**CONTRACTOR'S STATEMENT**  
This insulation has been installed in accordance with the manufacturer's recommendations to provide R-value of \_\_\_\_\_ sq. ft. of insulation to cover \_\_\_\_\_ sq. ft. of area of a structure's exterior.

**CONTRACTOR'S STATEMENT**  
This insulation has been installed in accordance with the manufacturer's recommendations to provide R-value of \_\_\_\_\_ sq. ft. of insulation to cover \_\_\_\_\_ sq. ft. of area of a structure's exterior.

**CONTRACTOR'S STATEMENT**  
This insulation has been installed in accordance with the manufacturer's recommendations to provide R-value of \_\_\_\_\_ sq. ft. of insulation to cover \_\_\_\_\_ sq. ft. of area of a structure's exterior.

**CONTRACTOR'S STATEMENT**  
This insulation has been installed in accordance with the manufacturer's recommendations to provide R-value of \_\_\_\_\_ sq. ft. of insulation to cover \_\_\_\_\_ sq. ft. of area of a structure's exterior.

**CONTRACTOR'S STATEMENT**  
This insulation has been installed in accordance with the manufacturer's recommendations to provide R-value of \_\_\_\_\_ sq. ft. of insulation to cover \_\_\_\_\_ sq. ft. of area of a structure's exterior.

**CONTRACTOR'S STATEMENT**  
This insulation has been installed in accordance with the manufacturer's recommendations to provide R-value of \_\_\_\_\_ sq. ft. of insulation to cover \_\_\_\_\_ sq. ft. of area of a structure's exterior.

**CONTRACTOR'S STATEMENT**  
This insulation has been installed in accordance with the manufacturer's recommendations to provide R-value of \_\_\_\_\_ sq. ft. of insulation to cover \_\_\_\_\_ sq. ft. of area of a structure's exterior.

**CONTRACTOR'S STATEMENT**  
This insulation has been installed in accordance with the manufacturer's recommendations to provide R-value of \_\_\_\_\_ sq. ft. of insulation to cover \_\_\_\_\_ sq. ft. of area of a structure's exterior.

**CONTRACTOR'S STATEMENT**  
This insulation has been installed in accordance with the manufacturer's recommendations to provide R-value of \_\_\_\_\_ sq. ft. of insulation to cover \_\_\_\_\_ sq. ft. of area of a structure's exterior.

**CONTRACTOR'S STATEMENT**  
This insulation has been installed in accordance with the manufacturer's recommendations to provide R-value of \_\_\_\_\_ sq. ft. of insulation to cover \_\_\_\_\_ sq. ft. of area of a structure's exterior.

**CONTRACTOR'S STATEMENT**  
This insulation has been installed in accordance with the manufacturer's recommendations to provide R-value of \_\_\_\_\_ sq. ft. of insulation to cover \_\_\_\_\_ sq. ft. of area of a structure's exterior.

**CONTRACTOR'S STATEMENT**  
This insulation has been installed in accordance with the manufacturer's recommendations to provide R-value of \_\_\_\_\_ sq. ft. of insulation to cover \_\_\_\_\_ sq. ft. of area of a structure's exterior.

**CONTRACTOR'S STATEMENT**  
This insulation has been installed in accordance with the manufacturer's recommendations to provide R-value of \_\_\_\_\_ sq. ft. of insulation to cover \_\_\_\_\_ sq. ft. of area of a structure's exterior.

**CONTRACTOR'S STATEMENT**  
This insulation has been installed in accordance with the manufacturer's recommendations to provide R-value of \_\_\_\_\_ sq. ft. of insulation to cover \_\_\_\_\_ sq. ft. of area of a structure's exterior.

**CONTRACTOR'S STATEMENT**  
This insulation has been installed in accordance with the manufacturer's recommendations to provide R-value of \_\_\_\_\_ sq. ft. of insulation to cover \_\_\_\_\_ sq. ft. of area of a structure's exterior.

**CONTRACTOR'S STATEMENT**  
This insulation has been installed in accordance with the manufacturer's recommendations to provide R-value of \_\_\_\_\_ sq. ft. of insulation to cover \_\_\_\_\_ sq. ft. of area of a structure's exterior.

**CONTRACTOR'S STATEMENT**  
This insulation has been installed in accordance with the manufacturer's recommendations to provide R-value of \_\_\_\_\_ sq. ft. of insulation to cover \_\_\_\_\_ sq. ft. of area of a structure's exterior.

EcoFill™ Wx Glasswool Blowing Insulation is intended for closed cavity applications and attic open blow applications.

### THERMAL PERFORMANCE (Attic and Sidewall Application)

The stated thermal resistance (R-value) is provided by installing in accordance with the manufacturer's instructions. Failure to install the required number of bags per 1,000 square feet and exceeding the maximum square feet of coverage per bag as recommended by the label will result in lower installed R-values. In order to achieve the correct R-value in attic applications, the proper number of bags per 1000 square feet at the minimum thickness must be installed. Failure to install the required number of bags at the required minimum thickness will result in lower insulation R-values. Field blending of this product with other loose fill insulations may affect its thermal performance and is not recommended by the manufacturer.

### EQUIPMENT REQUIRED

This product must be applied with a pneumatic blowing machine using a corrugated hose with a minimum ¼" internal corrugation and a diameter of at least 3". In closed cavity applications, the lead hose may be reduced to a size applicable for the drilled openings in the wall. Lead hose should not be smaller than 1" O.D.

### SET UP GUIDE FOR DENSE PACKING ECOFILL Wx

Type of Machine	Machine Description	Approximate Pressure or Blower Settings	Approximate Damper Settings
Large Production	Volumatic III or equivalent	<2 psi	4 inches
Medium Sized Machine	Krendl 2300 or equivalent	2	4.5 inches
Small Sized Machine	Force II or Wasp or equivalent	Medium to High	4 inches

### SPECIFICATION COMPLIANCE

This product conforms to the performance requirements of ASTM C 764, Type I, and Federal Specification HH-I-1030B, Class B. The thermal insulation resistance values have been determined in accordance with ASTM C 687 and ASTM C 518. Non-combustibility is tested in accordance with ASTM E 136. Moisture absorption is 5% or less by weight when tested in accordance with ASTM C 1104. This material meets the Quality Standards of the State of California. For attic applications, this product conforms to the DOE standard and contains no asbestos. Label design density developed in accordance with the North American Insulation Manufacturer Association's (NAIMA) guidelines.

### CAUTION

Insulation should not be blown over heat generating devices. Allow a minimum clearance of three inches (3") except around all Type IC light fixtures.

### FIRST AID

EYE CONTACT: Flush eyes with flowing water to remove irritant. If symptoms persist, seek medical attention.

SKIN CONTACT: Wash with mild soap and cool running water to remove fibers.

### PRECAUTIONS

The blower or installer must always wear a NIOSH approved dust respirator (certified N95 or greater). Other exposed workers who are in the immediate area when this product is being applied to a cavity should wear a NIOSH approved respirator. If EcoFill Wx is being blown in attic, no workers, unless they are wearing a NIOSH certified dust respirator (certified N95 or greater), should be permitted in the attic during or immediately after the insulation application. The blower should not use a bare hand to direct the insulation stream as it emerges from the blowing hose. A gloved hand or deflector should be used instead.

To prevent irritation when handling glass fibers, Knauf Insulation recommends wearing loose fitting, long-sleeved, long-legged clothing; gloves; safety glasses with side shields, goggles, or face shields; and a cap when working with material overhead. Wash work clothes separately and rinse washer thoroughly.

### GLASSWOOL AND MOLD

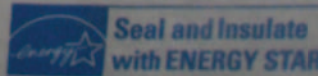
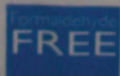
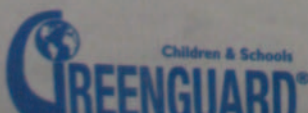
Glasswool insulation will not sustain mold growth. However, mold can grow on almost any material when it becomes wet and contaminated. Carefully inspect any insulation that has been exposed to water. If it shows any sign of mold it must be discarded. If the material is wet but shows no evidence of mold, it should be dried rapidly and thoroughly. If it shows signs of facing degradation from wetting, it should be replaced. Air handling insulation used in the air stream must be discarded if exposed to water.

### INGREDIENTS

Fibrous Glass CAS #65997-17-3

For additional information, refer to the Material Safety Data Sheet (MSDS) or contact:

Knauf Insulation GmbH, One Knauf Drive, Shelbyville, IN USA 46176, (317) 398-4434 [www.knaufinsulation.us](http://www.knaufinsulation.us) 04/10



Wx

## OPEN ATTIC APPLICATION

R-Value*	Bags/1,000 SF	Maximum Coverage	Minimum Weight	Initial Installed Thickness	Minimum Settled Thickness**
To obtain an insulation resistance (R-value) of:	The number of bags/1,000 SF of net area should not be less than:	Contents of this bag should not cover more than:	The weight/SF of installed insulation should not be less than:	Installed insulation should not be less than:	Installed insulation should not be less than:
R-60	33.2	30.1 SF	.995 LBS	20.000"	20.000"
R-48	26.4	37.9 SF	.791 LBS	16.625"	16.625"
R-44	23.3	43.0 SF	.698 LBS	15.000"	15.000"
R-38	19.8	50.5 SF	.595 LBS	13.125"	13.125"
R-30	15.3	65.5 SF	.458 LBS	10.500"	10.500"
R-26	13.2	75.8 SF	.396 LBS	9.250"	9.250"
R-22	11.0	91.0 SF	.330 LBS	7.875"	7.875"
R-19	9.4	105.8 SF	.283 LBS	6.875"	6.875"
R-13	6.3	158.5 SF	.189 LBS	4.750"	4.750"
R-11	5.2	190.5 SF	.157 LBS	4.000"	4.000"

Bag Net Weight — Nominal 30 lbs., Minimum 29 lbs.

Coverage and installation data were determined using a Volu-Matic® II blowing machine in 3rd gear with 13" gate opening, 2.0 psi air pressure, and 150' of 3" diameter internally-corrugated hose.

\* "R" means resistance to heat flow. The higher the R-value, the greater the insulating power. To get the marked R-value, it is essential that this insulation be installed properly. If you do it yourself, get instructions and follow them carefully. Instructions do not come with this package.

\*\*Based on a Third Party 2-year settling study, the predicted settlement over a 20-year period would be 1 percent or less. This amount of settling is thermally insignificant. Therefore, the installed and settled thickness is affectively the same.

Volu-Matic® II is a registered trademark of Unisul.

## CAVITY WALL APPLICATION

Framing	Cavity Depth	R-Value*	Density	Bags per 1000 SF		Net Minimum Weight per SF
				The number of bags per 1000 square feet of net area should not be less than:	Maximum Coverage per Bag	
		To obtain an insulation resistance of			Contents of this bag should not cover more than:	The weight per square feet of installed insulation should not be less than:
2" x 4"	3.50"	R-15	2.2 lbs./cu. ft.	21.4 bags	46.8 sq. ft.	0.64 lbs.
2" x 6"	5.50"	R-23	2.2 lbs./cu. ft.	33.6 bags	29.8 sq. ft.	1.01 lbs.
2" x 8"	7.25"	R-31	2.2 lbs./cu. ft.	44.3 bags	22.6 sq. ft.	1.33 lbs.
2" x 10"	9.25"	R-39	2.2 lbs./cu. ft.	56.6 bags	17.7 sq. ft.	1.70 lbs.

Bag Net Weight — Nominal 30 lbs., Minimum 29 lbs.

\* "R" means resistance to heat flow. The higher the R-value, the greater the insulating power. To get the marked R-value, it is essential that this insulation be installed properly. If you do it yourself, get instructions and follow them carefully. Instructions do not come with this package.

## CONTRACTOR'S STATEMENT

This insulation has been installed in conformance with the manufacturer's recommendations to provide R-values of:

R-\_\_\_\_\_ using \_\_\_\_\_ bags of insulation to cover \_\_\_\_\_ square feet of area at a minimum thickness \_\_\_\_\_

Appendix A4.2:  
**Knauf EcoFill Wx**

**Documentation for Dense-Packing**

Fact Sheet, “Knauf EcoFill Wx Blowing Insulation”



# Knauf EcoFill™ Wx Blowing Insulation

## Fact Sheet



### This is Fiber Glass Blowing Insulation. Read this before you buy.

#### What you should know about R-Values.

The chart shows the R-value of this insulation. "R" means resistance to heat flow. The higher the R-value, the greater the insulating power. Compare insulation R-values before you buy. There are other factors to consider. The amount of insulation you need depends mainly on the climate you live in. Also, your fuel savings from insulation will depend upon the climate, the type and size of your house, the amount of insulation already in your house, and your fuel use patterns

and family size. If you buy too much insulation, it will cost you more than what you'll save on fuel. To get the marked R-value, it is essential that this insulation be installed properly.

**Sidewall Installation:** EcoFill™ Wx Blow-in-Blanket System has been designed to be dense-packed to a density of 2.2 PCF in sidewalls of existing structures and should be installed by professionals.

**Note:** The chemical and physical properties of EcoFill™ Wx Fiber Glass Blowing Insulation represent average values determined in accordance with accepted test methods. The data is subject to normal manufacturing and testing variations. The data is supplied as a technical service and is subject to change without notice.

Check with your Knauf Insulation sales representative to ensure information is current.

Open Attic Application					
R-Value*	Bags/1,000 SF	Maximum Coverage	Minimum Weight	Initial Installed Thickness	Minimum Settled Thickness**
To obtain an insulation resistance (R-value) of:	The number of bags/1,000 SF of net area should not be less than:	Contents of this bags should not cover more than:	The weight/SF of installed insulation should not be less than:	Installed insulation should not be less than:	Installed insulation should not be less than:
R-60	33.2	30.1 SF	.995 lbs.	20.000"	20.000"
R-49	26.4	37.9 SF	.791 lbs.	16.625"	16.625"
R-44	23.3	43.0 SF	.698 lbs.	15.000"	15.000"
R-38	19.8	50.5 SF	.595 lbs.	13.125"	13.125"
R-30	15.3	65.5 SF	.458 lbs.	10.500"	10.500"
R-26	13.2	75.8 SF	.396 lbs.	9.250"	9.250"
R-22	11.0	91.0 SF	.330 lbs.	7.875"	7.875"
R-19	9.4	105.8 SF	.283 lbs.	6.875"	6.875"
R-13	6.3	158.5 SF	.189 lbs.	4.750"	4.750"
R-11	5.2	190.5 SF	.157 lbs.	4.000"	4.000"

Bag Net Weight - Nominal 30 lbs., Minimum 29 lbs.  
Coverage and installation data were determined using a Volu-Matic® II blowing machine in 3rd gear with 13" gate opening, 2.0 psi air pressure, 150' of 3" diameter internally-corrugated hose.

\* "R" means resistance to heat flow. The higher the R-value, the greater the insulating power. To get the marked R-value, it is essential that this insulation be installed properly. If you do it yourself, get instructions and follow them carefully. Instructions do not come with this package.

\*\*Based on a third party 2-year settling study, the predicted settlement over a 20-year period would be 1 percent or less. This amount of settling is thermally insignificant. Therefore, the installed and settled thicknesses are effectively the same.  
Volu-Matic® II is a registered trademark of Unisul.

Cavity Wall Applications						
Framing (in inches)	Cavity Depth (in inches)	R-Value* To obtain an insulation resistance of:	Density (cu. ft.)	Bags Per 1000 SF The number of bags per 1000 square feet of net area should not be less than:	Maximum Coverage Per Bag Contents of this bag should not cover more than:	Net Minimum Weight per SF The weight per square feet of installed insulation should not be less than:
2 x 4	3.50	R-15	2.2 lbs.	21.4 bags	46.8 sq. ft.	0.64 lbs.
2 x 6	5.50	R-23	2.2 lbs.	33.6 bags	29.8 sq. ft.	1.01 lbs.
2 x 8	7.25	R-31	2.2 lbs.	44.3 bags	22.6 sq. ft.	1.33 lbs.
2 x 10	9.25	R-39	2.2 lbs.	56.6 bags	17.7 sq. ft.	1.70 lbs.



Knauf EcoFill® Wx Blowing Insulation is certified for indoor air quality as a low emitting product by The GREENGUARD Environmental Institute™ to both the GREENGUARD Certification Program™ and the more stringent GREENGUARD For Children and Schools™ standard. [www.greenguard.org](http://www.greenguard.org)

Appendix A4.3:  
**Knauf EcoFill Wx**

**Documentation for Weatherization / Retrofit**

Data Sheet, “EcoFill Wx Glasswool Blowing Insulation for Weatherizing Attics and Sidewalls”



Data Sheet

BW-DS-08 03-12

# ECOFILL<sup>®</sup>

Glasswool Blowing  
Insulation for  
Weatherizing Attics and Sidewalls



# EcoFill® Wx Glasswool Insulation for Weatherizing Attics and Sidewalls

## Description

Knauf Insulation EcoFill® Wx Glasswool Blowing Insulation is an unbonded, virgin fibrous glass blowing insulation having a high degree of post-consumer recycled content, designed for weatherizing and retrofitting existing housing.

## Application

Knauf Insulation EcoFill Wx Glasswool Blowing Insulation is used to dense-pack sidewalls using the drill and fill technique common in retrofitting homes or in home weatherization activities. EcoFill Wx is also excellent for doing open blows in attics. This means that only one product is needed to complete an insulation retrofit/weatherization project.

## Features and Benefits

### Excellent Thermal Properties for Sidewalls:

- Fills all gaps and voids in wall cavities, creating a thermal barrier against outside air and better temperature control.
- Has greater resistance to air infiltration than cellulosic materials.
- Resists heat flow with an R-value of R-15 in 2 x 4 construction.
- Resists heat flow with an R-value of R-23 in 2 x 6 construction.
- Absolutely will not settle in walls.

### And Attics:

- Will not change from its intended R-value over its lifetime.

### Saves Warehouse Space

- EcoFill Wx requires about one-half of the warehouse space of competing cellulosic products.
- Twice as many jobs can be loaded on a truck when EcoFill Wx is used instead of cellulosic products.

## Better Coverage than Cellulose

- More than 2x the coverage per bag

## Sustainability

- 60% recycled post-consumer glass content and ULE verification every 6 months.
- Each bag contains the equivalent of 30 recycled bottles.

## Improves Crew Productivity

- With EcoFill Wx, installers spend less time handling bags.
- In a 2000 square foot home, about 46 bags of EcoFill Wx are required, compared to 145 bags of cellulosic material.
- Installs cleaner than cellulose, virtually dust-free. Blows clean and smooth and does not require stabilizing.

## Strong Poly Bag Packaging

- EcoFill Wx is packaged in a very strong poly bag that prevents bag breakage and jobsite spillage. The bags stack well and have a coefficient of friction sufficient to reduce slippage.

## Indoor Air Quality

- Certified for indoor air quality as a low emitting product by The GREENGUARD Environmental Institute to both the GREENGUARD Indoor Air Quality Certification Program<sup>SM</sup> and the more stringent GREENGUARD Children & Schools standard and is verified to be formaldehyde free.

## Non-combustible

- Glass fiber is naturally non-combustible and remains so for the life of the product. Unlike cellulose EcoFill Wx requires no additional fire-retardant chemical treatments. Unfaced fiber glass insulation is recognized by building code groups as an acceptable fire stop in residential wood frame walls.

## Resists Microbial Growth

- Does not promote the growth of fungi or bacteria.
- Will not rot or sustain vermin, rodents or insects.

## Specification Compliance

- ASTM C 764; Type I
- HH-I-1030B; Class B
- GREENGUARD Indoor Air Quality Certified<sup>®</sup>
- GREENGUARD Children and Schools Certified<sup>SM</sup>
- Knauf Insulation EcoFill Wx Glasswool Blowing Insulation is manufactured with a minimum of 60% post-consumer recycled glass.
- Meets the Quality Standards of the State of California.

## Technical Data

### Air Infiltration Resistance

- When tested against three cellulose products using ASTM C 522, EcoFill Wx showed 20 to 100% better air flow resistance than three leading brands. (See Table, right)

### Noise Reduction

- Improves Sound Transmission Class (STC) ratings by 4 to 10 points.
- A 3 point STC change is a noticeable improvement.

### Surface Burning Characteristics

- Does not exceed 25 Flame Spread, 50 Smoke Developed when tested in accordance with ASTM E 84 and CAN/ULC S102-M88.

### Critical Radiant Flux (ASTM E 970)

- Greater than 0.12 W/cm<sup>2</sup>.

### Moisture Vapor Sorption (ASTM C 1104)

- 5% maximum by weight.

### Corrosion (ASTM C 764)

- No greater than sterile cotton.
- Will not accelerate corrosion of aluminum, steel or copper.

### Microbial Growth (ASTM C 1338)

- Does not support microbial growth.

### Non-Combustibility (ASTM E 136)

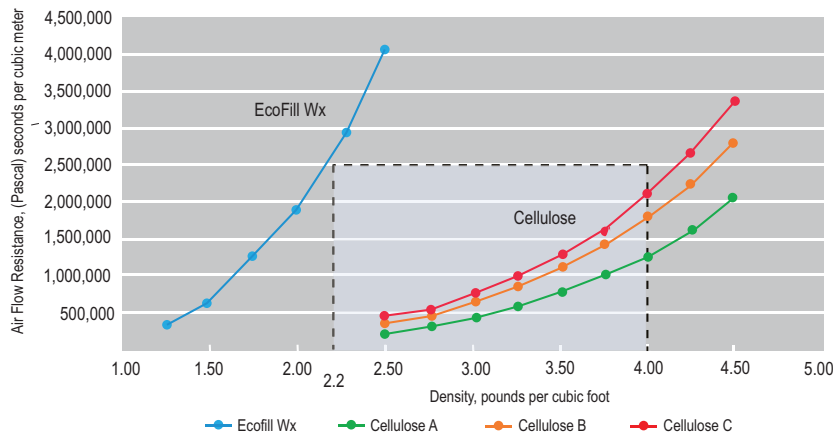
- No temperature rise above 54° F (30° C).

## Thermal Performance

The stated thermal performance of EcoFill Wx Blowing Insulation requires installation in accordance with the manufacturer's instructions. Failure to install the material properly will impact the performance of this product. This product must be installed according to the



## Air Flow Resistance vs. Density



In attic applications, EcoFill Wx blows smooth and fast, providing superior coverage.

coverage charts provided

### Equipment Required

To achieve labeled R-value, this product must be applied with a pneumatic blowing machine and a corrugated hose with a minimum ¼" internal corrugation, a minimum length of 150'. Coils in the hose should not be less than 36" in diameter. Acceptable material feed rate is 5-35 lbs./minute. The recommended feed rate is 15-35 lbs./minute.

### Glasswool and Mold

Glasswool insulation will not sustain mold growth. However, mold can grow on almost any material when it becomes wet and contaminated. Carefully inspect any insulation that has been exposed to water. If it shows any sign of mold it must be discarded. If the material is wet but shows no evidence of mold, it should be dried rapidly and thoroughly.

### Notes

The chemical and physical properties of Knauf Insulation EcoFill Wx Blowing Insulation represent typical average values determined in accordance with accepted test methods. The data is subject to normal manufacturing variations. The data is supplied as a technical service and is subject to change without notice. References to numerical flame spread ratings are not intended to reflect hazards presented by these or any other materials under actual fire conditions. Check with your Knauf Insulation sales representative to assure information is current.

## Open Attic Application

R-Value*	Bags/1,000 SF	Maximum Coverage	Minimum Weight	Initial Installed Thickness	Minimum Settled Thickness**
To obtain an insulation resistance (R-value) of:	The number of bags/1,000 SF of net area should not be less than:	Contents of this bags should not cover more than:	The weight/SF of installed insulation should not be less than:	Installed insulation should not be less than:	Installed insulation should not be less than:
R-60	33.2	30.1 SF	.995 lbs.	20.000"	20.000"
R-49	26.4	37.9 SF	.791 lbs.	16.625"	16.625"
R-44	23.3	43.0 SF	.698 lbs.	15.000"	15.000"
R-38	19.8	50.5 SF	.595 lbs.	13.125"	13.125"
R-30	15.3	65.5 SF	.458 lbs.	10.500"	10.500"
R-26	13.2	75.8 SF	.396 lbs.	9.250"	9.250"
R-22	11.0	91.0 SF	.330 lbs.	7.875"	7.875"
R-19	9.4	105.8 SF	.283 lbs.	6.875"	6.875"
R-13	6.3	158.5 SF	.189 lbs.	4.750"	4.750"
R-11	5.2	190.5 SF	.157 lbs.	4.000"	4.000"

Bag Net Weight - Nominal 30 lbs., Minimum 29 lbs.

Coverage and installation data were determined using a Volu-Matic® II blowing machine in third gear with 13" gate opening, 2.0 psi air pressure, 150' of 3" diameter internally-corrugated hose.

\* "R" means resistance to heat flow. The higher the R-value, the greater the insulating power. To get the marked R-value, it is essential that this insulation be installed properly. If you do it yourself, get instructions and follow them carefully. Instructions do not come with this package.

\*\*Based on Third Party 2-year settling study, the predicted settlement over a 20-year period would be 1 percent or less. This amount of settling is thermally insignificant. Therefore, the installed and settled thicknesses are effectively the same.

Volu-Matic® II is a registered trademark of Unisu.

See back page for Cavity Wall Applications

For more information call (800) 825-4434 ext. 8300

or visit us online at [www.knaufinsulation.us](http://www.knaufinsulation.us)



Knauf Insulation GmbH  
One Knauf Drive  
Shelbyville, IN 46176

Sales and Marketing 1-(800) 825-4434, ext. 8300

Technical Support 1-(800) 825-4434, ext. 8212

Fax 1-(317) 398-3675

Information info.us@knaufinsulation.com

World Wide Web www.knaufinsulation.us

©2012 Knauf Insulation GmbH.

## Cavity Wall Application

Framing	Cavity Depth	R-Value* To obtain an insulation resistance of:	Density	Bags per 1000 SF The number of bags per 1,000 square feet of net area should not be less than:	Maximum Coverage per Bag Contents of this bag should not cover more than:	Net Minimum Weight per SF The weight per square feet of installed insulation should not be less than:
2" x 4"	3.50"	R-15	2.2 lbs./cu. ft.	21.4 bags	46.8 sq. ft.	0.64 lbs.
2" x 6"	5.50"	R-23	2.2 lbs./cu. ft.	33.6 bags	29.8 sq. ft.	1.01 lbs.
2" x 8"	7.25"	R-31	2.2 lbs./cu. ft.	44.3 bags	22.6 sq. ft.	1.33 lbs.
2" x 10"	9.25"	R-39	2.2 lbs./cu. ft.	56.5 bags	17.7 sq. ft.	1.70 lbs.



Knauf EcoFill® Wx Glasswool Blowing Insulation is certified for indoor air quality as a low emitting product by The GREENGUARD Environmental Institute to both the GREENGUARD Indoor Air Quality Certification Program<sup>SM</sup> and the more stringent GREENGUARD Children & Schools standard and is verified to be formaldehyde free.

[www.greenguard.org](http://www.greenguard.org)



### LEED Eligible Product

Use of this product may help building projects meet green building standards as set by the Leadership in Energy and Environmental Design (LEED) Green Building Rating System. Credit 4.1 - 4.2 Recycled Content Credit 5.1 - 5.2 Regional Materials



This product has been tested and is certified to meet the EUCEB requirements.



Appendix A5.1:  
**Owens Corning ProPink L77**

**Documentation on Material Packaging**







Appendix A5.2a:  
**Owens Corning ProPink L77**

**Documentation for Dense-Packing**

Brochure, “Introducing ProPink L77 Loosefill Insulation”

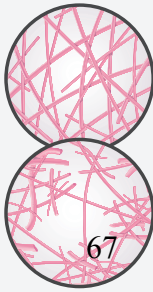
## INTRODUCING

### PROPINK® L77 LOOSEFILL INSULATION

Leave it to Owens Corning, the pioneer of fiberglass, to create a new fiber, loosefill product and manufacturing process that is so efficient and versatile, it is revolutionizing the industry. No other loosefill insulation measures up to its coverage, performance and energy-efficiency. **PROPINK® L77 Loosefill Insulation leads the industry in thermal performance and yield.**

#### HIGH PERFORMANCE FIBERIZING TECHNOLOGY

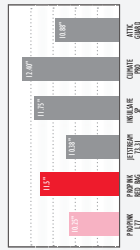
Owens Corning developed a new fiber which when blown creates a effectively distributed network of thermal reservoirs to resist heat transfer. This High Performance Fiberizing Technology produces a fiber construction that achieves a higher thermal performance in blown applications.



#### OLDER FIBERS

A new High Performance Fiberizing Technology, boasts a flexibly distributed thermal reservoir (see above) to achieve and maintain industry standard thermal requirements with less glass content (see below).

#### INCHES OF INSULATION TO ACHIEVE R-30



PROPINK® L77 Loosefill Insulation exhibits superior flexibility for installation, flexibility, performance, and productivity.

**PROPINK® L77 LOOSEFILL INSULATION blows faster, is more energy-efficient, covers more square footage per bag, and can be used for multiple applications.**



#### PROPRIETARY MANUFACTURING PROCESS

To produce PROPINK® L77 Loosefill Insulation, Owens Corning developed a proprietary manufacturing process specifically for loosefill products. This new process resulted in a yield improvement of 18% in terms of product performance.

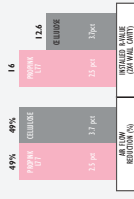
#### VERSATILE MULTI-USE APPLICATION

PROPINK® L77 Loosefill Insulation has been designed for use in walls, attics, cathedral ceilings and floors.

#### AIR INFILTRATION IN WALLS

PROPINK® L77 Loosefill Insulation also offers exceptional performance for air-infiltration control and thermal protection.

- Easily installed in walls and improved nesting for compactness
- Can now be "dense packed" into walls at an installed density of up to 2.50 pounds per cubic foot.
- Achieves an airflow reduction equal to cellulose, while providing R-Value greater than cellulose\*.



PROPINK® L77 Loosefill Insulation exhibits superior flexibility for installation, flexibility, performance, and productivity.

## WHY PINK IS GREEN™

By delivering solutions that conserve energy and protect the environment, Owens Corning is helping make the world a better place, one community at a time. We manufacture building materials that save energy, reduce reliance on fossil fuels and decrease greenhouse gas emissions around the world.



PROPINK® L77 loosefill insulation carries the GREENGUARD and GREENGUARD Gold certification. This means that the products are free of volatile organic compounds (VOCs) and formaldehyde, helping to improve indoor air quality for the most sensitive people in your home or office.



Owens Corning is the first insulation and masonry veneer manufacturer to receive NAHB Research Center's GreenSource certification. This certification recognizes Owens Corning's commitment to green building practices and our commitment to providing high-quality products that meet specific green building goals.



Owens Corning glass fiber and foam products made in North America are certified for their recycled content. Our products use an average of 50% recycled glass content and our rigid foam insulation uses an average of 25% recycled content. This helps reduce the carbon footprint of our products and the process instead of going to landfill.



Owens Corning is an ENERGY STAR Partner. We are committed to helping you save energy and protect the environment. Our products are designed to help you save energy and protect the environment. Our products are designed to help you save energy and protect the environment.



GREENGLASS is a new product line from Owens Corning that is made from 100% recycled glass. It is a high-performance insulation product that is designed to help you save energy and protect the environment.

## PROPINK® L77 INSULATION APPLICATION CHARTS

(Nominal R-Value Weight 31.8lb)

### ATTICS

R-VALUE	BAGS PER 100 SQ. FT.	MAX. NET COVERAGE (SQ. FT.)	MIN. NET THICKNESS (IN.)	MINIMUM R-VALUE PER BAG
R-13	5.5	182.9	0.189	4.75
R-19	8.1	124.2	0.266	6.75
R-22	9.4	108.3	0.311	7.75
R-23	10.0	100.0	0.333	8.25
R-30	13.0	77.0	0.428	10.25
R-38	16.8	59.5	0.555	12.75
R-44	20.1	49.8	0.662	14.75
R-48	22.5	44.4	0.740	16.50

### FLOORS

R-VALUE	MINIMUM THICKNESS (IN.)	MAXIMUM BAGS PER 100 SQ. FT.	MINIMUM BAGS PER 100 SQ. FT.
R-31	2.98	14.1	25.6
R-39	24.10	1.4	30.6
R-48	24.12	1.5	23.5

### WALLS

R-VALUE	MINIMUM THICKNESS (IN.)	MAXIMUM THICKNESS (IN.)	MAXIMUM BAGS PER 100 SQ. FT.	MINIMUM BAGS PER 100 SQ. FT.
R-13	3.5 (200)	1.1	87.0	1.5
R-19	4.5 (200)	1.3	67.0	1.75
R-21	5.5 (200)	1.3	55.4	1.81
R-24	5.5 (200)	1.8	40.0	25.0

### CATHEDRAL CEILING

R-VALUE	MINIMUM THICKNESS (IN.)	MAXIMUM THICKNESS (IN.)	MAXIMUM BAGS PER 100 SQ. FT.	MINIMUM BAGS PER 100 SQ. FT.
R-38	3.08	0.17	43.0	33.8
R-36	24.00	1.3	32.9	30.4
R-44	24.02	1.3	27.1	30.9

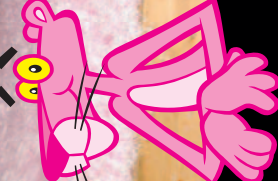
The maximum thickness for walls with the GreenGlaze™ fiberglass insulation and energy applications, GreenGlaze™ fiberglass insulation was used to determine the coverage information above. The machine was set up in 300 gsm with a 2 1/2" spigot and a 2" spigot. Following the test run in a 10' x 6' x 6'.



INTRODUCING  
**PROPINK® L77**

LOOSEFILL INSULATION  
MULTIPLE APPLICATIONS  
PERFECT FOR WALLS, ATTICS,  
CATHEDRAL CEILING  
AND FLOORS

18% YIELD  
IMPROVEMENT  
IN COVERAGE  
IN THE INDUSTRY



PROPINK L77 LOOSEFILL INSULATION

INSULATION THAT WORKS AS HARD AS YOU DO  
THE HIGHEST COVERAGE IN THE INDUSTRY THROUGH YIELD IMPROVEMENT

OWENS CORNING INSULATING SYSTEMS, LLC  
ONE OWENS CORNING PARKWAY  
SPRINGFIELD, OH 45502-0910, USA-6059  
www.owenscorning.com



As used in U.S.A. May, 2011. THE PINK PANTHER & © 1966-2011. Marked Owens Corning Insulating Systems, Inc. Energy Star and the Energy Star logo are registered trademarks of the Environmental Protection Agency. The GREENGUARD INDOOR AIR QUALITY CERTIFIED Mark is a registered certification mark used under license through GREENGUARD Environmental Institute. Fibers is pending.

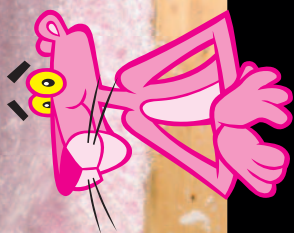




INTRODUCING  
**PROPIK® L77**

LOOSEFILL INSULATION  
MULTIPLE APPLICATIONS  
PERFECT FOR WALLS, ATTICS,  
CATHEDRAL CEILINGS  
AND FLOORS

**18% YIELD  
IMPROVEMENT  
IN COST PER  
CUBIC FOOT  
IN THE INDUSTRY**



PROPIK® L77 LOOSEFILL INSULATION

**INSULATION THAT WORKS AS HARD AS YOU DO**  
THE HIGHEST COVERAGE IN THE INDUSTRY THROUGH YIELD IMPROVEMENT

**WHY PINK IS GREEN™**

By delivering solutions that conserve energy and protect the environment, Owens Corning is helping make the world a better place, one community at a time. We manufacture building materials that save energy, reduce reliance on fossil fuels and decrease greenhouse gas emissions around the world.



PROPIK® L77 loosefill insulation carries the GREENGUARD Gold certification, a leading program for low emitting products and materials. In fact, Owens Corning is proud to be a member of the GreenGuard Gold program, the highest GREENGUARD Gold certification available for the building materials industry.

Owens Corning is the first insulation and masonry veneer manufacturer to receive NAHB Research Center's GreenSource certification, which recognizes manufacturers who design and produce products that meet specific green building standards.

Owens Corning glass fiber and foam products made in North America are certified for their recycled content. Our products use an average of 50% recycled glass content and our rigid foam insulation uses an average of 90% recycled content. This helps reduce the carbon footprint of our products and the amount of waste that ends up in landfills.

PROPIK® L77 loosefill insulation carries the GREENGUARD Gold certification, a leading program for low emitting products and materials. In fact, Owens Corning is proud to be a member of the GreenGuard Gold program, the highest GREENGUARD Gold certification available for the building materials industry.

Owens Corning is the first insulation and masonry veneer manufacturer to receive NAHB Research Center's GreenSource certification, which recognizes manufacturers who design and produce products that meet specific green building standards.

Owens Corning glass fiber and foam products made in North America are certified for their recycled content. Our products use an average of 50% recycled glass content and our rigid foam insulation uses an average of 90% recycled content. This helps reduce the carbon footprint of our products and the amount of waste that ends up in landfills.

**PROPIK® L77 INSULATION APPLICATION CHARTS**

(BASED ON 15% WEIGHT LOSS)

**ATTICS**

R-VALUE	MINIMUM THICKNESS (IN.)	MINIMUM DENSITY (PCF)	MINIMUM THERMAL RESISTANCE (HRS·FT <sup>2</sup> ·°F/IN.)	MINIMUM YIELD (CU FT PER 100 SQ FT)	MAX NET COVERAGE (SQ FT PER 100 SQ FT)
R-13	5.5	18.9	0.189	4.75	4.75
R-19	8.1	12.4	0.266	6.75	6.75
R-22	9.4	10.3	0.311	7.75	7.75
R-30	13.0	7.0	0.428	10.25	10.25
R-38	16.8	5.9	0.555	12.75	12.75
R-44	20.1	4.9	0.662	14.75	14.75
R-49	22.5	3.8	0.940	19.50	19.50

**FLOORS**

R-VALUE	MINIMUM THICKNESS (IN.)	MINIMUM DENSITY (PCF)	MINIMUM THERMAL RESISTANCE (HRS·FT <sup>2</sup> ·°F/IN.)	MINIMUM YIELD (CU FT PER 100 SQ FT)	MAX NET COVERAGE (SQ FT PER 100 SQ FT)
R-31	29.8	1.4	39.0	25.6	0.846
R-39	24.0	1.4	30.6	32.7	1.079
R-48	24.2	1.5	23.5	42.6	1.406

**WALLS**

R-VALUE	MINIMUM THICKNESS (IN.)	MINIMUM DENSITY (PCF)	MINIMUM THERMAL RESISTANCE (HRS·FT <sup>2</sup> ·°F/IN.)	MINIMUM YIELD (CU FT PER 100 SQ FT)	MAX NET COVERAGE (SQ FT PER 100 SQ FT)
R-13	5.5 (200)	1.3	87.0	1.5	0.379
R-19	8.1 (200)	1.3	67.0	1.5	0.519
R-22	9.4 (200)	1.3	55.4	1.8	0.596
R-24	5.5 (200)	1.8	40.0	25.0	0.823

The maximum thickness for walls with 2x4 studs is 5.5 inches. The maximum thickness for walls with 2x6 studs is 8.1 inches. The maximum thickness for walls with 2x8 studs is 9.4 inches. The maximum thickness for walls with 2x10 studs is 13.0 inches. The maximum thickness for walls with 2x12 studs is 16.8 inches. The maximum thickness for walls with 2x14 studs is 20.1 inches. The maximum thickness for walls with 2x16 studs is 22.5 inches.

**INTRODUCING  
PROPIK® L77 LOOSEFILL INSULATION**

Leave it to Owens Corning, the pioneer of fiberglass, to create a new fiber, loosefill product and manufacturing process that is so efficient and versatile, it is revolutionizing the industry. No other loosefill insulation measures up to its coverage, performance and energy efficiency. **PROPIK® L77 Loosefill Insulation leads the industry in thermal performance and yield.**

**HIGH PERFORMANCE FIBERIZING TECHNOLOGY**

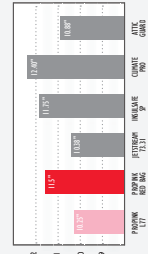
Owens Corning developed a new fiber which when blown creates a effectively distributed network of thermal reservoirs to resist heat transfer. This High Performance Fiberizing Technology produces a fiber construction that achieves a higher thermal performance in blown applications.



**OLDER FIBERS**

A new High Performance Fiberizing Technology, boasts a flexibly distributed thermal reservoir (see above) to achieve and maintain industry standard thermal requirements with less glass material (see below).

**INCHES OF INSULATION TO ACHIEVE R-30**



**PROPIK® L77 Loosefill Insulation exhibits superior performance for installation, flexibility, performance, and productivity.**

**PROPIK® L77 LOOSEFILL INSULATION blows faster, is more energy-efficient, covers more square footage per bag, and can be used for multiple applications.**



OWENS CORNING INSULATING SYSTEMS, LLC  
ONE OWENS CORNING PARKWAY  
CORNING, NY 14860-0001  
www.owenscorning.com

As used in U.S.A. May 2011. THE PINK PIG™ and © 1996-2011. Marked Owens Corning Insulating Systems, Inc. Energy Star and the Energy Star logo are registered trademarks of the Environmental Protection Agency. The GREENGUARD INDOOR AIR QUALITY CERTIFIED Mark is a registered certification mark used under license through GREENGUARD Environmental Institute. Fibers is pending.



INTRODUCING  
**PROPIK® L77**  
LOOSEFILL INSULATION  
MULTI-USE, HIGH-RETURN  
PRODUCT FOR WALLS, ATTIC,  
CEILING, FLOORS,  
AND FLOORS  
**18% YIELD  
IMPROVEMENT  
HIGHEST COVERAGE  
IN THE INDUSTRY**

# PERFORMANCE. PRODUCTIVITY. PROFITABILITY.

## PERFORMANCE

PROPIK® L77 LooseFill Insulation provides the highest yield of any loosefill insulation currently on the market.

Use less insulation for each job with increased thermal performance.

### BETTER COVERAGE

- A single 33-pound bag provides 77 square feet of coverage at R-30 in attic applications.
- That's a coverage increase of nearly 18% over PROPIK® Unbonded Loosefill Insulation (red bag).



## PRODUCTIVITY

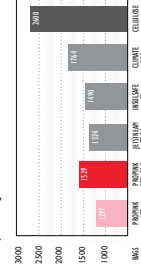
PROPIK® L77 LooseFill Insulation is certified for use in multiple applications, including walls, attics, cathedral ceilings and floors in new construction and retrofit applications.

Recognize better productivity in your warehouse and on your blow trucks—use PROPIK® L77 LooseFill Insulation across multiple applications.

### WAREHOUSE PRODUCTIVITY

- With the coverage increase, you'll use less—reducing space allocation in your warehouse for inventory.
- Multiple applications mean the inventory you carry turns faster.

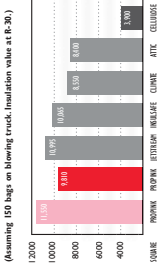
### BAGS OF LOOSEFILL INSULATION REQUIRED FOR 100,000 SQFT OF ATTIC COVERAGE AT R-30



### BLOW TRUCK PRODUCTIVITY

- When a blow truck leaves the shop with PROPIK® L77 Insulation, it provides 18% more coverage—saving fuel costs and improving labor productivity.

### BLOW TRUCK CAPACITY (assuming 100 bags on blowing truck, insulation value at R-30)



### Complete energy performance for the life of the home.

- Non-combustible and non-corrosive
- Non-conductive to moisture retention
- Material design integrity that doesn't settle, preserving its thermal properties
- Formaldehyde Free
- Resistant to fungus and mold growth
- Third party certified 50% recycled content—the highest percentage in the industry.

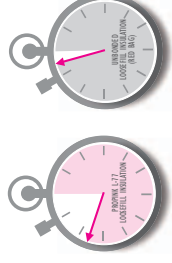
## PROFITABILITY

PROPIK® L77 LooseFill Insulation saves you time on every job because you need 13% less product to insulate the same area (compared to red bag).

Improve crew productivity with increased thermal performance and consistent quality.

### BLOW TIME

- Blowing time is reduced by 15% depending on blow rates used for each product to insulate the same area (compared to red bag).



### MACHINE SETTING

- Owens Corning provides recommended machine settings specific to PROPIK® L77 LooseFill Insulation to ensure quick and easy installation.
- The product's consistent quality requires only minor blowing machine changes during installation, as opposed to complete recalibration.

For appropriate machine settings, call 1-800-GEOPINK for more information.

**PUT PROPIK® L77 LOOSEFILL INSULATION TO WORK FOR YOU**  
PROPIK® L77 LooseFill Insulation isn't just a better product, it's a better product whose performance directly impacts your productivity and profitability. **PROPIK® L77 LOOSEFILL INSULATION DOES MORE THAN WORK—IT WORKS FOR YOU!**

## ADVANTAGES

- Highest coverage—use less product to achieve the same R-Value
- Save space in your warehouse
- Save space on your truck
- Improve labor productivity—unload trucks faster, spend less time managing inventory
- Use one product for many applications
- Optimize inventory on hand—improving your inventory turns
- Save time during installation & help eliminate builder call backs
- Maximize one of your most valued assets—your blow truck

**HIGHER PRODUCTIVITY AND BETTER PROFITABILITY FOR YOU, YOUR CREW AND YOUR BUSINESS.**

Owens Corning has been the leader in producing high-quality building materials for over 70 years. Almost every major technological innovation in glass fiber technology has been the result of our meeting the needs of our customers. That's why our insulating products are rated Number One in Builder Magazine Brand Use Study\* for the last 16 years.

Our partnership with professional installers across the country has resulted in a new loosefill formulation that's so versatile, it's changing the way installers work, reducing the amount of time on each job. With products—like PROPIK® L77 LooseFill Insulation—you increase your productivity on each and every job because of enhanced coverage, thermal performance and more consistent quality. PROPIK® L77 Insulation will make your crews more productive, while supplying an exceptional product to your customers. After all, only Owens Corning could perfect insulation so that it works as hard as you do.

FOR INSULATION THAT WORKS AS HARD AS YOU DO, CHECK OUT PROPIK® L77 LOOSEFILL INSULATION. WANT TO KNOW MORE? CALL YOUR SALES REP OR VISIT [WWW.OWENSCORNING.COM](http://WWW.OWENSCORNING.COM).

\* Henley/Wood, 2010



INTRODUCING  
**PROPIK® L77**  
LOOSEFILL INSULATION  
MULTI-USE, HIGH-RETURN  
PRODUCT FOR WALLS, ATTIC,  
CEILING, FLOORS,  
AND FLOORS  
**18% YIELD  
IMPROVEMENT  
HIGHEST COVERAGE  
IN THE INDUSTRY**

# PERFORMANCE. PRODUCTIVITY. PROFITABILITY.

## PERFORMANCE

PROPIK® L77 LooseFill Insulation provides the highest yield of any loosefill insulation currently on the market.

Use less insulation for each job with increased thermal performance.

### BETTER COVERAGE

- A single 33-pound bag provides 77 square feet of coverage at R-30 in attic applications.
- That's a coverage increase of nearly 18% over PROPIK® Unbonded Loosefill Insulation (red bag).



## PRODUCTIVITY

PROPIK® L77 LooseFill Insulation is certified for use in multiple applications, including walls, attics, cathedral ceilings and floors in new construction and retrofit applications.

Recognize better productivity in your warehouse and on your blow trucks—use PROPIK® L77 LooseFill Insulation across multiple applications.

### WAREHOUSE PRODUCTIVITY

- With the coverage increase, you'll use less—reducing space allocation in your warehouse for inventory.
- Multiple applications mean the inventory you carry turns faster.

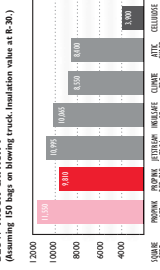
### BAGS OF LOOSEFILL INSULATION REQUIRED FOR 100,000 SQFT OF ATTIC COVERAGE AT R-30



### BLOW TRUCK PRODUCTIVITY

- When a blow truck leaves the shop with PROPIK® L77 Insulation, it provides 18% more coverage—saving fuel costs and improving labor productivity.

### BLOW TRUCK CAPACITY



### Complete energy performance for the life of the home.

- Non-combustible and non-corrosive
- Non-conductive to moisture retention
- Material design integrity that doesn't settle, preserving its thermal properties
- Formaldehyde Free
- Resistant to fungus and mold growth
- Third party certified 50% recycled content—the highest percentage in the industry.

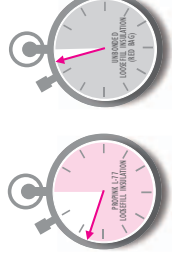
## PROFITABILITY

PROPIK® L77 LooseFill Insulation saves you time on every job because you need 13% less product to insulate the same area (compared to red bag).

Improve crew productivity with increased thermal performance and consistent quality.

### BLOW TIME

- Blowing time is reduced by 15% depending on blow rates used for each product to insulate the same area (compared to red bag).



### MACHINE SETTING

- Owens Corning provides recommended machine settings specific to PROPIK® L77 LooseFill Insulation to ensure quick and easy installation.
- The product's consistent quality requires only minor blowing machine changes during installation, as opposed to complete recalibration.

For appropriate machine settings, call 1-800-GEOPINK for more information.

**PUT PROPIK® L77 LOOSEFILL INSULATION TO WORK FOR YOU**  
PROPIK® L77 LooseFill Insulation isn't just a better product, it's a better product whose performance directly impacts your productivity and profitability. **PROPIK® L77 LOOSEFILL INSULATION DOES MORE THAN WORK—IT WORKS FOR YOU!**

## ADVANTAGES

- Highest coverage—use less product to achieve the same R-Value
- Save space in your warehouse
- Save space on your truck
- Improve labor productivity—unload trucks faster, spend less time managing inventory
- Use one product for many applications
- Optimize inventory on hand—improving your inventory turns
- Save time during installation & help eliminate builder call backs
- Maximize one of your most valued assets—your blow truck

**HIGHER PRODUCTIVITY AND BETTER PROFITABILITY FOR YOU, YOUR CREW AND YOUR BUSINESS.**

Owens Corning has been the leader in producing high-quality building materials for over 70 years. Almost every major technological innovation in glass fiber technology has been the result of our meeting the needs of our customers. That's why our insulating products are rated Number One in Builder Magazine Brand Use Study\* for the last 16 years.

Our partnership with professional installers across the country has resulted in a new loosefill formulation that's so versatile, it's changing the way installers work, reducing the amount of time on each job. With products like PROPIK® L77 LooseFill Insulation—you increase your productivity on each and every job because of enhanced coverage, thermal performance and more consistent quality. PROPIK® L77 Insulation will make your crews more productive, while supplying an exceptional product to your customers. After all, only Owens Corning could perfect insulation so that it works as hard as you do.

FOR INSULATION THAT WORKS AS HARD AS YOU DO, CHECK OUT PROPIK® L77 LOOSEFILL INSULATION. WANT TO KNOW MORE? CALL YOUR SALES REP OR VISIT WWW.OWENSCORNING.COM.

\* Henley/Wood, 2010



INTRODUCING  
**PROFINK L77**  
LOOSEFILL INSULATION  
MULTI-USE, EASY INSTALLATION  
PERFECT FOR WALLS, ATTICS,  
CEILING, FLOORS AND FLOORS

**18% YIELD  
IMPROVEMENT  
HIGHEST COVERAGE  
IN THE INDUSTRY**



# PERFORMANCE. PRODUCTIVITY. PROFITABILITY.

## PERFORMANCE

PROFINK® L77 LooseFill Insulation provides the highest yield of any loosefill insulation currently on the market.

**Use less insulation for each job with increased thermal performance.**

### BETTER COVERAGE

- A single 33-pound bag provides 77 square feet of coverage at R-30 in attic applications.
- That's a coverage increase of nearly 18% over PROFINK® Unbonded Loosefill Insulation (red bag).

## PRODUCTIVITY

PROFINK® L77 LooseFill Insulation is certified for use in multiple applications, including walls, attics, cathedral ceilings and floors in new construction and retrofit applications.

**Recognize better productivity in your warehouse and on your blow trucks—use PROFINK® L77 LooseFill Insulation across multiple applications.**

### WAREHOUSE PRODUCTIVITY

- With the coverage increase, you'll use less—reducing space allocation in your warehouse for inventory.
- Multiple applications mean the inventory you carry turns faster.

## PROFITABILITY

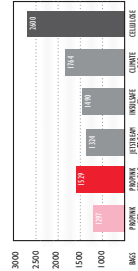
PROFINK® L77 LooseFill Insulation saves you time on every job because you need 13% less product to insulate the same area (compared to red bag).

**Improve crew productivity with increased thermal performance and consistent quality.**

### BLOW TIME

- Blowing time is reduced by 15% depending on blow rates used for each product to insulate the same area (compared to red bag).

## BAGS OF LOOSEFILL INSULATION REQUIRED FOR 100,000 SQFT OF ATTIC COVERAGE AT R-30



### BLOW TRUCK PRODUCTIVITY

- When a blow truck leaves the shop with PROFINK® L77 Insulation, it provides 18% more coverage—saving fuel costs and improving labor productivity.

### BLOW TRUCK CAPACITY

(Assuming 100 bags on blowing truck, insulation value at R-30.)



## Complete energy performance for the life of the home.

- Non-combustible and non-corrosive
- Non-conductive to moisture retention
- Material design integrity that doesn't settle, preserving its thermal properties
- Formaldehyde Free
- Resistant to fungus and mold growth
- Third party certified 50% recycled content—the highest percentage in the industry.

## ADVANTAGES

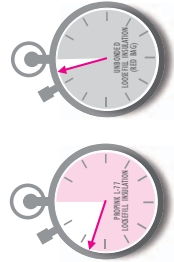
- Highest coverage—use less product to achieve the same R-Value
- Save space in your warehouse
- Save space on your truck
- Improve labor productivity—unload trucks faster, spend less time managing inventory
- Use one product for many applications
- Optimize inventory on hand—improving your inventory turns
- Save time during installation & help eliminate builder call backs
- Maximize one of your most valued assets—your blow truck

**HIGHER PRODUCTIVITY  
AND BETTER PROFITABILITY  
FOR YOU, YOUR CREW AND  
YOUR BUSINESS.**

INNOVATION IN VERSATILITY

Owens Corning has been the leader in producing high-quality building materials for over 70 years. Almost every major technological innovation in glass fiber technology has been the result of our meeting the needs of our customers. That's why our insulating products are rated Number One in Builder Magazine Brand Use Study\* for the last 16 years.

Our partnership with professional installers across the country has resulted in a new loosefill formulation that's so versatile, it's changing the way installers work, reducing the amount of time on each job. With products like PROFINK® L77 LooseFill Insulation—you increase your productivity on each and every job because of enhanced coverage, thermal performance and more consistent quality. PROFINK® L77 Insulation will make your crews more productive, while supplying an exceptional product to your customers. After all, only Owens Corning could perfect insulation so that it works as hard as you do.



### MACHINE SETTING

- Owens Corning provides recommended machine settings specific to PROFINK® L77 LooseFill Insulation to ensure quick and easy installation.
- The product's consistent quality requires only minor blowing machine changes during installation, as opposed to complete recalibration.

For appropriate machine settings, call 1-800-GEOPINK for more information.

FOR INSULATION THAT WORKS AS HARD AS YOU DO, CHECK OUT PROFINK® L77 LOOSEFILL INSULATION. WANT TO KNOW MORE? CALL YOUR SALES REP OR VISIT [WWW.OWENSCORNING.COM](http://WWW.OWENSCORNING.COM).

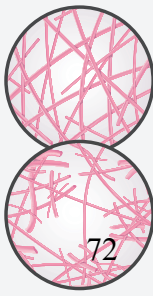
\* Henley/Wood, 2010

## INTRODUCING PROPIK® L77 LOOSEFILL INSULATION

Leave it to Owens Corning, the pioneer of fiberglass, to create a new fiber, loosefill product and manufacturing process that is so efficient and versatile, it is revolutionizing the industry. No other loosefill insulation measures up to its coverage, performance and energy-efficiency. **PROPIK® L77 Loosefill Insulation leads the industry in thermal performance and yield.**

### HIGH PERFORMANCE FIBERIZING TECHNOLOGY

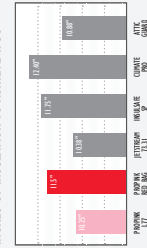
Owens Corning developed a new fiber which when blown creates an effectively distributed network of thermal reservoirs to resist heat transfer. This High Performance Fiberizing Technology produces a fiber construction that achieves a higher thermal performance in blown applications.



### OLDER FIBERS

A new High Performance Fiberizing Technology, boasts a flexibly distributed thermal reservoir (see above) to absorb and maintain industry standard thermal requirements with less glass material (see below).

### INCHES OF INSULATION TO ACHIEVE R-30



PROPIK® L77 Loosefill Insulation exhibits superior performance for installation, flexibility, performance, and productivity.

**PROPIK® L77 LOOSEFILL INSULATION blows faster, is more energy-efficient, covers more square footage per bag, and can be used for multiple applications.**



### PROPRIETARY MANUFACTURING PROCESS

To produce PROPIK® L77 Loosefill insulation, Owens Corning developed a proprietary manufacturing process specifically for loosefill products. **This new process resulted in a yield improvement of 18% in terms of product performance.**

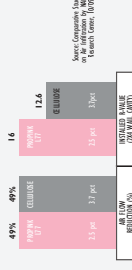
### VERSATILE MULTI-USE APPLICATION

PROPIK® L77 Loosefill Insulation has been designed for use in walls, attics, cathedral ceilings and floors.

### AIR INFILTRATION IN WALLS

PROPIK® L77 Loosefill Insulation also offers exceptional performance for air-infiltration control and thermal protection.

- Easily installed in walls and improved nesting for compactness
- Can now be "dense packed" into walls at an installed density of up to 2.50 pounds per cubic foot.
- Achieves an airflow reduction equal to cellulose, while providing R-Value greater than cellulose\*.



## WHY PINK IS GREEN™

By delivering solutions that conserve energy and protect the environment, Owens Corning is helping make the world a better place, one community at a time. We manufacture building materials that save energy, reduce reliance on fossil fuels and decrease greenhouse gas emissions around the world.



PROPIK® L77 Loosefill Insulation carries the GREENGUARD Environmental Certification Program for low emitting products and materials. In fact, Owens Corning is the only manufacturer of loosefill insulation qualified for the stringent GREENGUARD® Product Emission Standard for Children and Schools.

Owens Corning is the first insulation and masonry veneer manufacturer to receive NAHB Research Center's GreenSource Environmental Certification. This practice and our commitment to environmental design select products that meet specific green building standards.

Owens Corning glass fiber and foam products made in North America are certified for their recycled content. Our loosefill insulation products use an average of 50% recycled glass fiber and 10% recycled foam. This helps reduce waste back into the process instead of going to landfill.



Owens Corning is an ENERGY STAR® Partner. We are committed to helping our customers reduce energy consumption and improve indoor air quality. Our products are designed to help reduce energy use in all new construction and existing buildings.

"HEAT, CRACKLE-TO-CRACKLE CERTIFIED™" PROPIK® L77 Loosefill Insulation is a high-performance product that offers superior thermal performance, sound absorption and the enjoyment of healthy, green building strategies.

## PROPIK® L77 INSULATION APPLICATION CHARTS

(NORMAL 15.5 WEIGHT 31 LB)

WALLS	R-VALUE	MAX NET COVERAGE (100 SQ FT)	MIN VOLUME (CU FT)	MINIMUM THICKNESS (IN)	MINIMUM FREQUENCY (CYCLES PER BAG)	MINIMUM YIELD (CU FT PER BAG)
R-13	5.5	182.9	0.189	4.75	6.75	6.75
R-19	8.1	124.2	0.266	6.75	6.75	6.75
R-22	9.4	108.3	0.311	7.75	7.75	7.75
R-24	13.0	77.0	0.428	10.25	10.25	10.25
R-30	16.8	59.5	0.555	12.75	12.75	12.75
R-44	26.1	40.8	0.662	14.75	14.75	14.75
R-48	28.5	36.1	0.940	19.50	19.50	19.50

FLOORS	R-VALUE	MIN-PLU THICKNESS	MAXIMUM THICKNESS	INSTALLED LB PER SQ FT	MINIMUM THICKNESS	MINIMUM YIELD (SQ FT PER BAG)
R-31	29.8	1.4	39.0	25.6	0.846	0.846
R-39	24.0	1.4	30.6	32.7	1.079	1.079
R-48	24.2	1.5	23.5	42.6	1.606	1.606

WALLS	R-VALUE	MINIMUM THICKNESS	INSTALLED LB PER CU FT	MAXIMUM COVERAGE (100 SQ FT PER BAG)	MINIMUM YIELD (CU FT PER BAG)
R-13	5.5 (200)	1.3	87.0	15.1	15.1
R-19	8.1 (200)	1.3	67.0	18.1	18.1
R-21	5.5 (200)	1.3	55.4	18.1	18.1
R-24	5.5 (200)	1.8	40.0	25.0	25.0

CATHEDRAL CEILING	R-VALUE	MINIMUM THICKNESS	INSTALLED LB PER SQ FT	MAXIMUM COVERAGE (100 SQ FT PER BAG)	MINIMUM YIELD (SQ FT PER BAG)
R-38	20.0	1.3	43.0	24.8	24.8
R-36	24.0	1.3	32.9	30.4	30.4
R-44	24.2	1.3	27.1	36.9	36.9

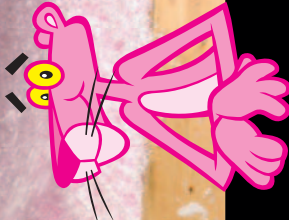
The maximum coverage chart is for walls. The maximum coverage for floors and cathedral ceilings is based on the maximum thickness of the insulation and the minimum thickness of the substrate. The maximum coverage for walls is based on the maximum thickness of the insulation and the minimum thickness of the substrate. The maximum coverage for floors and cathedral ceilings is based on the maximum thickness of the insulation and the minimum thickness of the substrate.



## INTRODUCING PROPIK® L77

**LOOSEFILL INSULATION MULTIPLE APPLICATIONS PERFECT FOR WALLS, ATTICS, CATHEDRAL CEILING AND FLOORS**

**18% YIELD IMPROVEMENT FOR COVERING MORE SQUARE FOOTAGE IN THE INDUSTRY**



## PROPIK® L77 LOOSEFILL INSULATION

**INSULATION THAT WORKS AS HARD AS YOU DO**  
THE HIGHEST COVERAGE IN THE INDUSTRY THROUGH YIELD IMPROVEMENT



OWENS CORNING INSULATING SYSTEMS, LLC  
ONE OWENS CORNING PARKWAY  
SPRINGFIELD, OH 45504-0001  
www.owenscorning.com



As of the 46287 H. P. Road in U.S.A. May 2011, THE PINK PIG CARTOON IS A TRADEMARK OF Owens Corning Fiberglas, Inc. The GREENGUARD Environmental Certification Program is a registered trademark of the Environmental Product Institute. The GREENGUARD Environmental Certification Program is a registered trademark of the Environmental Product Institute. The GREENGUARD Environmental Certification Program is a registered trademark of the Environmental Product Institute.



Appendix A5.2b:  
**Owens Corning ProPink L77**

**Documentation for Dense-Packing**

Sell Sheet, "A New Standard for Insulation & Air Infiltration"



## Owens Corning™ PROPINK® L77 PINK Fiberglas™ Loosefill Insulation

# A NEW STANDARD FOR INSULATION & AIR INFILTRATION.

### The Ultimate In Air Infiltration and Thermal Performance.

When it comes to choosing insulation for weatherization projects in existing homes, many factors – including thermal performance and air infiltration – come into consideration. Many people assume cellulose is the best choice. But there is a better choice – Owens Corning™ PROPINK® L77 PINK Fiberglas™ Loosefill Insulation delivers exceptional performance for air-infiltration control and thermal protection compared to cellulose insulation.

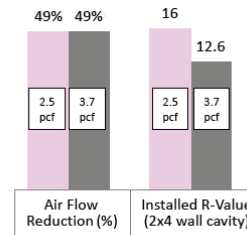
### New Formulation. New Dense-Packing Capabilities. New Standard In Performance.

Owens Corning™ PINK Fiberglas Loosefill Insulation has been reformulated to make it more effective for use in wall applications.

- Easily installed in walls and improved nesting for compaction
- Can now be “dense packed” into walls at an installed density of up to 2.50 pounds per cubic foot\*
- Achieves an airflow reduction equal to cellulose, while providing R-value greater than cellulose\*\*

■ Owens Corning™ PROPINK® L77 PINK Fiberglas™ Loosefill Insulation  
■ Cellulose

Source: Comparative Study on Air Infiltration by NAHB Research Center, 10/09†



### Easy Installation.

- Easily flows around obstacles within a wall cavity, allowing for complete and uniform cavity fill, especially for “drill and fill” applications
- Dense packing of PINK Fiberglas Loosefill Insulation can be achieved by professional installers using most machines that are currently used to blow either fiberglass or cellulose insulation into existing wall cavities

### Most tested. Most trusted.

At Owens Corning, we apply over 70 years of building science expertise and rigorous testing to every product we make. Our PINK Fiberglas Loosefill Insulation products won’t settle or deteriorate with age, so there’s no danger of losing R-value over time. It’s noncombustible, meeting all model building codes for non combustibility. It won’t absorb moisture or support mold growth.† Simply put, it’s safe and one of the most effective insulation products you can use in a home.

\* Ensure that the wall system can withstand the additional forces before dense packing any insulation material.

\*\* R-value means resistance to heat flow. The higher the R-value, the greater the insulating power. Ask your seller for the fact sheet on R-values. To get the marked R-value, it is essential that insulation be installed properly.

† PROPINK® L77 PINK Fiberglas™ Loosefill Insulation was tested using the Volumatic II. Results may vary based on equipment used.

‡ As manufactured, fiber glass insulation is resistant to mold growth (tested per ASTM C 1338). However, mold growth can occur on building materials, including insulation, when it becomes contaminated with organic material and when water is present. To avoid mold growth on fiber glass insulation, remove any water that has accumulated and correct or repair the source of that water as soon as possible. Insulation that has become wet should be inspected for evidence of residual moisture and contamination, and any insulation that is contaminated should be promptly removed and replaced.

Pub. No. 10011629. Printed in U.S.A. November 2009. The color PINK is a registered trademark of Owens Corning. ©2009 Owens Corning.

Appendix A5.3:  
**Owens Corning ProPink L77**

**Documentation for Weatherization / Retrofit**

Fact Sheet, “ProPink L77 Pink Fiberglas Unbonded Loosefill  
Insulation”



# PROPINK® L77 PINK® Fiberglas™ Unbonded Loosefill Insulation

## Manufacturers Fact Sheet

This fact sheet contains important details about Owens Corning's™ **PROPINK® L77 PINK® Fiberglas™ Unbonded Loosefill Insulation**. Read it carefully.

Owens Corning will accept no responsibility when the product is not installed in accordance with the product label. Stated R-value is provided by installing the required number of bags at a thickness not less than the label minimum thickness. Installation of the required number of bags may yield more than the specified minimum thickness. Failure by the installer to provide both the required bags and at least the minimum thickness will result in lower insulation R-value.

### Open Cavity Application (Attics) Nominal Bag Weight 33 lb.

R-value	Bags Per 1,000 Sq. Ft.	Maximum Net Coverage	Minimum Weight/Sq. Ft.	Minimum Thickness (in)	Minimum Settled Thickness <sup>1</sup>
R-13	5.5	182.9	0.180	4.75	4.75
R-19	8.1	124.2	0.266	6.75	6.75
R-22	9.4	106.3	0.311	7.75	7.75
R-26	11.2	89.6	0.368	9.00	9.00
R-30	13.0	77.0	0.428	10.25	10.25
R-38	16.8	59.5	0.555	12.75	12.75
R-44	20.1	49.8	0.662	14.75	14.75
R-49	22.6	44.2	0.747	16.25	16.25
R-60	28.5	35.1	0.940	19.50	19.50

### Closed Cavity Application (Walls)

R-value	Minimum Thickness	Installed Density Lbs. Per Cu. Ft.	Maximum Coverage Per Bag	Bags Per 1,000 Sq. Ft.	Minimum weight Lbs. Per Sq. Ft.
13	3.5 (2x4)	1.3	87.0	11.5	0.379
15	3.5 (2x4)	1.5	75.4	13.3	0.438
21	5.5 (2x6)	1.3	55.4	18.1	0.596
24	5.5 (2x6)	1.8	40.0	25.0	0.825

### Closed Cavity Application (Floors and Cathedral Ceilings)

R-value	Minimum Thickness	Installed Density Lbs. Per Cu. Ft.	Maximum Coverage Per Bag	Bags Per 1,000 Sq. Ft.	Minimum weight Lbs. Per Sq. Ft.
31	7.25 (2x8)	1.4	39.0	25.6	0.846
39	9.25 (2x10)	1.4	30.6	32.7	1.079
48	11.25 (2x12)	1.5	23.5	42.6	1.406

<sup>1</sup> This product shows negligible settling, with no impact on thermal performance. Unisol Volu-Matic III machine was used to determine the coverage information above. The machine was set up in 3rd gear, with a 75% open gate and a 3" hose, blowing the wool out in a 10 ft. arc.

### Read This Before You Buy

#### What you should know about R-Values:

The chart shows the R-values of this insulation. "R" means resistance to heat flow. The higher the R-value, the greater the insulating power. Compare insulation R-values before you buy.

There are other factors to consider. The amount of insulation you need depends mainly on the climate you live in. Also, your fuel savings from insulation will depend on the climate, the type and size of house, the amount of insulation already in your house, and your fuel-use patterns and family size. If you buy too much insulation, it will cost you more than what you'll save on fuel.

To get the marked R-value, it is essential that this insulation be installed properly.

Please contact 419-248-6557 for additional information. Email: [gettech@owenscorning.com](mailto:gettech@owenscorning.com)

#### Disclaimer of Liability

Technical information contained herein is furnished without charge or obligation and is given and accepted at recipient's sole risk. Because conditions of use may vary and are beyond our control, Owens Corning makes no representation about, and is not responsible or liable for the accuracy or reliability of data associated with particular uses of any product described herein.



INNOVATIONS FOR LIVING™

**OWENS CORNING INSULATING SYSTEMS, LLC**  
ONE OWENS CORNING PARKWAY  
TOLEDO, OHIO, USA 43659

**1-800-GET-PINK®**  
[www.owenscorning.com](http://www.owenscorning.com)

Pub. No. 22676-I. Printed in U.S.A. December 2012. THE PINK PANTHER™ & ©1964–2012 Metro-Goldwyn-Mayer Studios Inc. All Rights Reserved. The color PINK is a registered trademark of Owens Corning. ©2012 Owens Corning. All Rights Reserved.



## **Appendix B: Loose-Fill Stone Wool Insulation Products (Not Intended for Dense-Pack Retrofit Applications)**

- Amerrock RockWool Premium Plus
- Rolan Fibra Mineral Nodular
- Roxul Rockfill
- Thermafiber Spray Wool

Appendix B1:  
**Amerrock RockWool Premium Plus**

# RockWool Premium Plus™

Triple Protection Insulation



## One Product with 5 Extraordinary Benefits...

- Green - 60% Recycled, 45% Sustainable
- Inorganic - Resists, Mold, Mildew, & Fungus
- Fireproof - Listed by UL as NON-Combustible
- Thermal Performance - R-Values of 4.1 per Inch!
- Sound Control - STC Ratings as high as 69

**Amerrock Products**  
manufacturer of premium rockwool products

Submittal Approval:

Job Name:

Contractor:

Date:

**DESCRIPTION:** Rock Wool Premium Plus™ Insulation is a high quality mineral fiber manufactured in a granular form. This product is noncombustible, moisture-resistant, non-corrosive, non-deteriorating, mildew-proof and vermin-proof. With the addition of Rock-Tight™ Adhesive, Rock Wool Premium Plus™ Insulation can be sprayed overhead which allows the design professional greater flexibility with their designs.

**INSTALLATION:** Caulk all framing abutments, windows, and door placements. Where required, fill with acceptable fire-stopping material any areas that cannot be adequately reached with pneumatic fill of Rock Wool Premium Plus™ Insulation. Install the insulation into the area to be filled using specified pneumatic equipment. If using Rock-Tight™ adhesive the equipment must be fitted with an auxiliary liquid high pressure line designed to uniformly add adhesive to the Rock Wool Premium Plus™ Insulation. The moisture content should not exceed 10% - 15% maximum. The insulation must be sprayed using only approved materials and equipment in accordance with the current installation instructions. **For complete installation instruction visit our website at [www.amerrock.com](http://www.amerrock.com)**

**Design Considerations:** Rock Wool Premium Plus™ Insulation must be installed in conditions that enable activation of the adhesive. Sprayed cavities must be dry before enclosing with gypsum wallboard. Generally 3-½" fills will be dry in 24 hours or less. 5-½" and greater will take longer depending on weather conditions. Allow extra time for low temperatures or high humid conditions. Consult your Amerrock Sales Representative for installation practices below 40°F.

**Product Data:** Rock Wool Premium Plus™ Insulation is packaged in 30 lb. bags and should be stored under roof and in a dry location. Rotate stock. Do not stack more than 11 bags high.

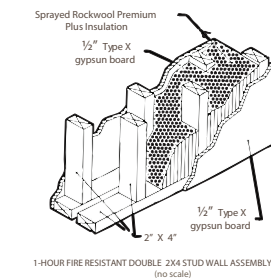
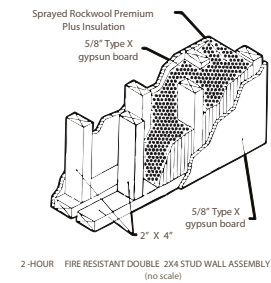
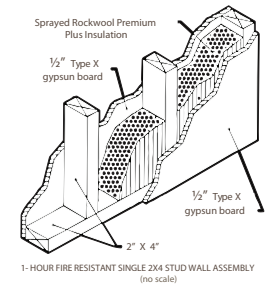
**Technical Data:**

Thickness	Nominal Density	Tested to ASTM C 518	Tested to ASTM E 84	
		R-Value	Flame Spread	Smoke Development
3.5"	4 pcf	R-15	5	0
5.5"		R-23.5		
8.8"	1.7 pcf	R-30		
11.2"		R-38		
14.4"		R-49		

**Standard Compliance:**

- |                     |  |
|---------------------|--|
| ASTM E 136          | Non-Combustible  |
| ASTM E 119-83       | 1 - Hour Fire Wall   |
| ASTM E 119-88       | 2 - Hour Load Bearing Fire Wall (1250 lbs.)                  |
| ASTM E 119-00       | Std Test Methods for Fire Tests of Bldg. Const. & Mat'ls     |
| ASTM E 283-04       | Rate of Air Flow (1.83 cfm/sf @ 50 Pa & 3.68 cfm/sf @ 75 Pa) |
| ASTM E 413          | Sound Isolation Rating (various assemblies up to STC 69)     |
| ASTM E 605          | Standard Test Methods for Thickness and Density              |
| ASTM C 1014         | Standard Specification for Spray Applied Mineral Fiber       |
| ASTM C 739          | Smoldering Combustion (Pass)                                 |
| ASTM C 553          | Moisture Absorption (Pass)                                   |
| ASTM C 665          | Non Corrosive (Pass)   |
| ASTM C 1338         | Mold & Fungus Resistance (Pass)                              |
| ICC-ES Report 9551A | Fire Resistive Construction                                  |

UL Classified per Follow-up R14191  
Approved by the New York City Board of Standards and Appeals under MEA #352-98-M  
\*Test was conducted using Amerrock Products Rock-Tight Adhesive



Building with Energy and Sustainability Today with the Focus on the **Future.**

**60% Recycled Content**

- Energy Atmosphere
- Material & Resources
- Indoor Environmental Quality
- Innovation in Design

Up to 31 LEED Credits in 4 Categories  
Consult your LEED Professional regarding credit qualification.



Appendix B2:  
**Rolan Fibra Mineral Nodular**

# Fibra Mineral Nodular Rolan\*

## Descripción

La **Fibra Mineral Nodular Rolan\*** es un termoaislante nodulizado compuesto por fibras minerales de roca de alta calidad, resistentes a la alta temperatura y contiene resina termofija como aglutinante que le da flexibilidad y baja densidad instalada.

A temperatura ambiente, la densidad debe ser entre 40 y 48 kg/m<sup>3</sup> (2.5 a 3 lb/ft<sup>3</sup>). En aplicaciones hasta 250 °C, la densidad instalada debe ser de 64 kg/m<sup>3</sup> (4 lb/ft<sup>3</sup>) y arriba de 250 °C no debe ser menor a 96 kg/m<sup>3</sup> (6 lb/ft<sup>3</sup>).

## Presentación

Se suministra en sacos de polietileno de 14 kg.



## Aplicaciones

La **Fibra Mineral Nodular Rolan\*** es apropiada para usarse en un amplio rango de temperaturas. Se instala en cavidades y espacios en los que no puede aplicarse una placa, rollo o cualquier producto preformado.

Los espacios en los que se instala la fibra deben poder soportar sin deformarse, la presión interna ejercida por la compresión necesaria para lograr la compactación de la fibra.

Puede ser aplicada manualmente o con equipo neumático; se compacta solo en forma manual.

## Beneficios

- Alta eficiencia térmica.
- Ahorra costos energéticos y de instalación.
- Amplio rango de temperaturas.
- Versatilidad de ajustar la densidad.
- Fácil de instalar.

## Cumplimiento de normas

**NOM-009 ENER** Eficiencia energética en aislamientos térmicos industriales.

**ASTM C-764** Fibras granulas.

**ASTM C-519** Densidad de fibras minerales.

**ASTM C-356** Encogimiento lineal.

**ASTM C-411** Comportamiento sobre la superficie caliente.

## Datos técnicos

**Temperatura de uso:** Desde -49°C hasta 650 °C.

**Asbesto:** No contiene.

**Absorción de humedad:** < 1.0% en volumen.

**Alcalinidad:** pH entre 7.5 y 10.

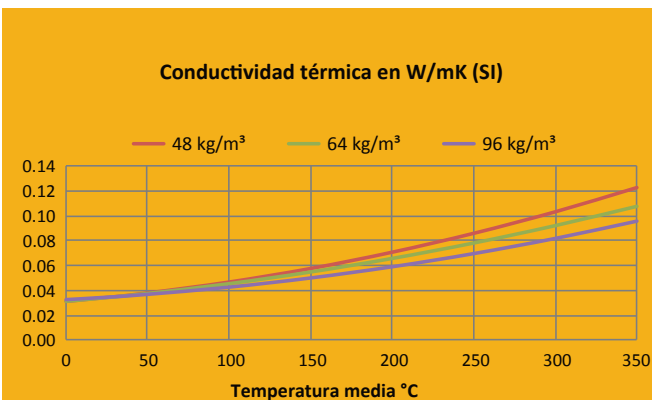
**Comportamiento al fuego:** Según ASTM E-84.

• Propagación de flama: 0

• Generación de humo: 0

**Corrosividad:** Nula.

**Resistente a bacterias y hongos.**



Conversiones de SI a Sist. Inglés:  
W/m.k x 6.935 = BTU.in/ft<sup>2</sup>.h°F  
(°C x 1.8)+32 = °F

Appendix B3:  
**Roxul Rockfill**



**General Product Information:**

ROXUL<sup>®</sup> products are stone wool fiber insulations made from basalt rock and slag. This combination results in a non-combustible product with a melting point of approximately 2150°F (1177°C), which gives it excellent fire resistance properties. ROXUL stone wool is a water repellent yet vapour permeable material.

**Description & Common Applications:**

ROXUL ROCKFILL<sup>™</sup> is a loose fill stone wool insulation for use in residential construction and attic renovations. ROCKFILL is designed to be easily aerated and spread out by hand, filling gaps in hard-to-reach places without requiring a blowing machine. The special characteristics of stone wool result in a light weight, water repellent, fire resistant and sound absorbing insulation that will not grow mold or mildew. ROCKFILL does not move or settle over time, maintaining expected R-value.

**Compliance and Performance:**

CAN/ULC-S702	Mineral Fibre Thermal Insulation for Buildings	Type 4, Complies
CAN/ULC-S114	Test for Non-Combustibility	Non-Combustible
CAN/ULC S102	Surface Burning Characteristics	Flame Spread = 0
		Smoke Developed = 0
CAN/ULC-S129	Smoulder Resistance	Mass Loss <0.03%
NBC 1995, Article 9.25.2.2	Insulation Materials	Conforms

**Thermal Resistance:**

ASTM C 518 (C 177)	R-value/inch @ 75°F	2.9 hr.ft <sup>2</sup> .F/Btu***
	RSI value/25.4 mm @ 24°C	0.52 m <sup>2</sup> K/W

**Installation:**

Installation in 3 easy steps

- |                              |                         |                   |
|------------------------------|-------------------------|-------------------|
| 1) OPEN                      | 2) AERATE               | 3) SPREAD         |
| Cut open and remove from bag | Fluff product to aerate | Spread out evenly |

Cover exposed skin. When working un ventilated areas, wear a disposable mask. Clean the area using vacuum equipment. Dispose of waste according to local regulations. Rinse hands in cold water before washing. Ventilate working area if possible. Wear goggles when working overhead.

This product has been specifically designed to meet your needs for attic insulation.

### Key Application Qualifiers:

- Easy to install
- No blowing machine required
- Stays in place for even comfort
- Fills gaps in hard-to-reach areas
- Non-combustible
- Excellent sound absorbency
- Chemically inert
- Does not rot or sustain vermin
- Does not promote growth of fungi or mildew
- Low moisture sorption
- Water resistant
- CFC- and HCFC- free product and process
- Made from natural & recycled materials

Desired R-Value	Thickness Needed (inches)	Number of Bags Required at Various Square Footages				Coverage per single bag (Sq ft)
		500	750	1000	1500	
R-12	4.25	8	12	16	24	63.50
R-20	7	14	20	27	40	38.09
R-24	8.5	16	24	32	48	31.74
R-28	9.75	19	28	37	56	27.21
R-32	11	21	32	42	63	23.81
R-36	12.5	24	36	48	71	21.16
R-40	13.75	27	40	53	79	19.04
R-50	17.25	33	50	66	99	15.23



### Other ROXUL Products:

Please consult ROXUL for all your insulation needs. We have an extensive range of products for all applications from pipe insulation to commercial products to residential batts. ROXUL invites all inquiries and will act promptly to service all of your requirements.

**Note:**

As ROXUL Inc. has no control over installation design and workmanship, accessory materials or application conditions, ROXUL Inc. does not warranty the performance or results of any installation containing ROXUL Inc's. products. ROXUL Inc's. overall liability and the remedies available are limited by the general terms and conditions of sale. This warranty is in lieu of all other warranties and conditions expressed or implied, including the warranties of merchantability and fitness for a particular purpose.

**ROXUL INC.**  
www.roxul.com

**Milton, Ontario Tel: 905-878-8474**  
**Tel: 1-800-265-6878**

**Fax: 905-878-8077**  
**Fax: 1-800-991-0110**  
Revised: September 24th, 2013  
Supersedes: September 14th, 2012

Appendix B4:  
**Thermafiber Spray Wool**

(Document covers many of Thermafiber's Granulated Products)



Made in the USA



**Industrial Bulk Wool:** General use product where thermal and acoustical properties are the main concerns. End user is typically not concerned with color, shot, coatings, or nodule size.



### Packing Wool

- Purpose: Thermal Efficiency, Acoustical Performance.
- Characteristics: Mineral Wool formed into medium or regular sized nodules.
- Granulated – **Poured** in at a density of 4.0 pcf has an 800° F continuous operating temperature rating.
- Granulated – **Packed** in at a density of 8.0 pcf has a 1,200° F continuous operating temperature rating.



### Spray Wool – Pneumatically applied

- Same product as Industrial Bulk Wool except is white in color.
- Typical uses include applications where spray applying bulk wool is less labor intensive than hand packing.
- Can be blown loose or with an adhesive.



### High Performance (HP) Wool – Packing

- Purpose: Higher temperature applications above 1,200° F up to 1,900° F continuous operating temperature. Must be installed (packed) at a density of 14.0 pcf for application at 1,900° F.
- Characteristics: Darker wool due to higher iron content, less shrinkage, better thermal conductivity.
- Typical uses for higher temperature applications where service temperatures are expected above 1,200° F to 1,900° F max.
- Also used as imitation (glowing) embers in gas fireplaces.



### Industrial #10 Granulated Wool – Packing

- Purpose: Same as Industrial Bulk Wool however, material is identified as Industrial #10 Granulated Wool for approved use in U.S. Coast Guard Specification 164.009/169/0.

# Thermafiber® Filler/Reinforcement Wool (FRF)



**FRF Wool:** FRF is a granulated product where characteristics such as nodule size, color, chemistries, coatings, and shot contents are important to the application. This type of loose fiber was entered into the market with a numbering system to easily identify the unlimited combinations of different custom features this type of product has to offer.

## Examples of Features:

- Color – white, off white, and dark color.
- Nodule size – Milled to large.
- Treatments – Silicone & Surfactant coatings to repel or absorb moisture/water.
- Oil content – Low (0.2%) to high (1.0%).
- Shot content – FRF contains a maximum of 50% shot content or non-fibrous solids on 325 screen. Shot content varies by product.

## Determining which FRF Product to use is based upon the following criteria:

- Where will it go?
- How is the FRF going to be installed? – Packed, sprayed, added to another product?
- Are there temperature requirements in the application?
- What nodule size is needed? – Nodule size as small as a BB, or as large as a cotton ball?
- Is the color important?



## Typical applications for Thermafiber FRF:

- **FRF 502:** Typical application: Mineral wool fibers provided to brake manufactures for replacement of asbestos in brake formulations.
- **FRF 511 or FRF 512:** Typically used as a filler in wet slurry applications such as vacuum forming, ceiling tile production or coatings.
- **FRF 514:** Made with smaller nodule size (BB size) to pour into small openings typically 1 - 1½" wide. it can be used for blending into batch of slurry applications where fiber dispersement is critical.
- **FRF 114:** A further refined nodule that provides a non-fibrous content of less than 5%.

### Notice:

THERMAFIBER, Inc. shall not be liable for incidental and consequential damages, directly or indirectly sustained, nor for any loss caused by application of these goods not in accordance with current printed instructions or for other than the intended use. THERMAFIBER liability is expressly limited to replacement of defective goods. Any claim shall be deemed waived unless made in writing within thirty (30) days from date it was or reasonably should have been discovered. LEED® is a registered trademark of the US Green Building Council

For Further Information:

For more information on Thermafiber Industrial Bulk Wool or FRF products contact Thermafiber's Technical Services Department at 1-888-834-2371 or visit our website [www.thermafiber.com](http://www.thermafiber.com).

Minimum  
**70%**  
Recycled  
Content



## **Appendix C: Example of Dense-Packing Instructions From a Cellulose Insulation Manufacturer**

## Retrofitting Existing Sidewalls with GreenFiber Insulation Contractor Work Instructions



Distributed by: US GreenFiber, LLC

2500 Distribution Street, Suite 200  
Charlotte, NC 28203  
(800) 228-0024  
Fax (704) 379-0685

[www.greenfiber.com](http://www.greenfiber.com)

# Retrofitting Existing Sidewalls with GreenFiber Insulation – Contractor Work Instructions



The following instructions are for contractors for the purpose of retrofitting existing sidewalls with GreenFiber Insulation. These instructions are designed for use with GreenFiber's INS770LD, INS765LD, INS745, INS735, or INS515LD products for installation in sidewall cavities. Follow the sidewall coverage charts on the bags to assure that the proper amount of insulation is installed.

## Before Installation

Retrofitting any part of a home's envelope will cause changes in air, heat and moisture flow. Contractors must understand how this installation will impact the house, i.e., ventilation and combustion air requirements. Examine both the inside and outside of a home to determine areas that are inappropriate for installation. For example:

- Do not insulate any home that has active knob and tube wiring.
- Where moisture related problems are evident, the source of the problems must be determined and corrected before proceeding.
- Do not install insulation in stud runs where heat-producing devices such as an unprotected chimney, a fireplace, etc. might cause severe overheating.
- Building assembly details such as balloon framing, fire blocking, pocket door connections, dry wall gaps or other leak points must be taken into consideration when blowing GreenFiber Insulation into a house.
- GreenFiber's Material Data Safety Sheet (MSDS) requires the use of safety eyewear when installing this product. The insulation contractor is responsible for managing housekeeping and engineering controls below nuisance dust levels. Follow all OSHA guidelines for safety requirements including 29 CFR 1926.501 Duty to Have Fall Protection. Various other local, state and federal rules and guidelines may apply.

## Application

There are two basic techniques (Two-Hole or Double-Blow Method and One-Hole Tube Fill Method) used to fill existing, enclosed sidewall cavities. These techniques can be performed from either the exterior or interior of a home.

Installation through the interior wall is very difficult and is not detailed here. While it can be done, there is a wide range of other considerations related to someone currently occupying the home that present challenges to interior wall installation.

## Required Equipment:

- Insulation blowing machine capable of at least 2.9 psi at the end of the hose
- Not all insulation blowing machines meet this requirement; please check with GreenFiber Customer Service – 800.228.0024 – for verification.
- ¼-inch fiberglass rod
- Hose clamps
- Utility knife
- Filter (such as sponge)
- Wood, plastic, cork or Styrofoam plugs
- Drill and a 2 to 3-inch hole saw / Forstner bit
- 50-100 ft. of 3-6 inch inside diameter ribbed hose
- 1 to 1½ -inch reducer nozzle
- 12 ft., 1 1/8 to 1 ¼-inch inside diameter tube
  - Best practice: 1 1/8 to 1 ¼ - inch tube will match sturdiness of a thin wall irrigation hose
- Note: When connecting hoses, a gradual reduction from the outlet to the 1 1/8 - 1 ¼ inch hose will yield the best results.

## One-Hole Tube Fill Method

The one-hole tube fill method is recommended by state Weatherization Assistance Programs for the retrofit of sidewalls, and is the GreenFiber preferred method for retrofitting existing sidewalls. When performing Weatherization Assistance Program work, follow the instructions below.

## Density Check

GreenFiber requires the use of either a core sampling method or a bag count and volume method to assess the installed density of its products when using the Dry Dense-Pack method. GreenFiber specifications call for a minimum density of 3.5 pcf (pounds per cubic foot) in 2x4 and 2x6 cavities. These two methods are described below.

### Instructions for One-Hole Tube Fill Method

1. Remove a section of exterior siding and drill a single 2 ½-inch diameter hole through the sheathing approximately one foot from the bottom plate of the wall.



2. Using a hose clamp, attach the 1 to 1½ - inch reducer nozzle to the insulation blowing machine hose.
3. Using a hose clamp, attach the 12 ft., 1 1/8 or 1 ¼ - inch inside diameter tube to the end of the reducer nozzle.
4. Using the utility knife, cut the end of tube on a diagonal to facilitate snaking behind wiring and plumbing.
5. Suggested beginning settings for Insulation blowing machine:
  - a. Material gate set to 25% of total opening.
  - b. Air setting at 60% of capacity.

NOTE: These settings are given as a starting point. Adjustment will be needed based on machine type and condition.



6. Insert cut end of the tube through the filter into the 2 ½-inch drilled hole and feed to within 6-inches of the top of the stud cavity. Note any fire stops or other obstructions. Drill additional holes as needed if obstructions are present.
7. Turn on insulation blowing machine (Hold tube in place 6-inches from top). As material begins to flow, the cavity will fill bottom to top.
8. When you feel resistance from the tube, the cavity is full - DO NOT STOP BLOWING. You will now begin the Dry Dense-Pack Procedure. Dry Dense-Packing is required to achieve the minimum requirement of 3.5 pcf in wall cavities.
9. Dry Dense-Packing means you will begin compressing the material in the cavity and excess air will be forced out the entry hole. Move tube up and down 4 inches until material threatens to plug tube. Then retract the tube 8-10 inches.
10. Repeat Dry Dense-Packing procedures until within 6 inches of the entry hole.
11. When within 6 inches of entry hole quickly redirect tube downward to Dry Dense-Pack bottom of cavity.
12. Repeat Dry Dense-Packing procedures in bottom of cavity.
13. Retract tube to entry hole, jab forward 3 to 4 times to finish Dry Dense-Packing entry area.
14. Turn insulation blowing machine off. Keep tube in hole for 3 to 4 seconds before fully removing from cavity.

## Two-Hole or Double-Blow Method

The two-hole or double-blow method is the most frequently used procedure for installing loose-fill insulation in sidewalls of existing homes. This method allows air pressure to escape from the upper hole while filling the cavity from the lower hole.

### Instructions for Two-Hole or Double-Blow

1. Remove exterior siding to drill holes wherever possible to avoid potential damage/appearance defects to the exterior of the house.
2. Drill a hole between two studs approximately 2.5 to 3 feet up from the bottom plate. Drill a second hole approximately one foot below the top plate in the same stud run. On a multi-story home, repeat this process on each floor.
3. Drill holes approximately 2-inches in diameter through sheathing if siding is removed. A 2-inch diameter hole enables directional application.
4. Using a hose clamp, attach a 1-inch reducer nozzle to the insulation blowing machine hose.
5. Adjust air pressure to accommodate wall installation and nozzle size. This will ensure proper compacting of insulation and prevent settling in the cavity.
  - a. Air pressure adjustment will vary depending on machine type and condition. More air pressure is required for sidewall installation than attic installation. Contact the machine manufacturer for the correct settings.
6. Insert the nozzle into the bottom hole first and turn on the blowing machine. An increase in back pressure causes the blower to strain and alerts the installer that the cavity is filled and ready for compaction.

7. When material is no longer flowing through the hose, visually ensure the cavity is completely filled. Move the nozzle to the next hole in the stud cavity. Continue this process until each stud run in the wall is filled.
8. Fill the holes using wood, plastic, cork or Styrofoam plugs. Replace the siding if removed. If siding was not removed, use exterior-grade spackle to cover the plugs.

**Contact your GreenFiber technical representative if you have questions regarding coverage, equipment or application at 800.228.0024.**

US GreenFiber (USGF) does not provide architectural, inspection, engineering or building science services and disclaims any responsibility with respect thereto. USGF does not guarantee, warrant or attempt to determine whether a building structure, design or the use of material therein complies with any applicable Codes, standards, guidelines or standards of workmanship. Adding insulation to any part of a home's envelope will cause changes in air, heat and moisture flow. The user must understand how the use of insulation will change the performance of a dwelling prior to installation. The user maintains the full and complete responsibility to comply with all Codes, laws and regulations applicable to the safe and proper use, handling and installation of the product and should consult with an architect, engineer, building scientist, and/or a rater/energy specialist for all construction, design and performance related questions. The information contained herein is believed to be accurate as of the time of preparation. However, USGF makes no warranty concerning the accuracy of this information. USGF will not be liable for claims relating to the use of information contained herein, regardless of whether it is claimed that the information or recommendations are inaccurate, incomplete or incorrect.



Distributed by: US GreenFiber, LLC

2500 Distribution Street, Suite 200  
Charlotte, NC 28203  
(800) 228-0024  
Fax (704) 379-0685

[www.greenfiber.com](http://www.greenfiber.com)

*buildingamerica.gov*

U.S. DEPARTMENT OF  
**ENERGY** | Energy Efficiency &  
Renewable Energy

DOE/GO-102015-4531 • February 2015