

## HEV Fleet Testing

# Advanced Vehicle Testing Activities



**2006  
Lexus RX400h**  
VIN #  
JTJHW31U160002575

### A Strong Energy Portfolio for a Strong America

Energy efficiency and clean, renewable energy will mean a stronger economy, a cleaner environment, and greater energy independence for America. Working with a wide array of state, community, industry, and university partners, the U.S. Department of Energy's Office of Energy Efficiency and Renewable Energy invests in a diverse portfolio of energy technologies.

## Fleet Performance

### Description:

This vehicle is operated throughout the valley of Phoenix, Arizona by an ETA employee. It is used for commuting and errands.

### Major Operations & Maintenance Events:

Replaced power switch on rear door @ 27,641 Cost: warranty  
Replaced auxiliary battery @ 29,275 Cost: warranty

### Operating Cost:

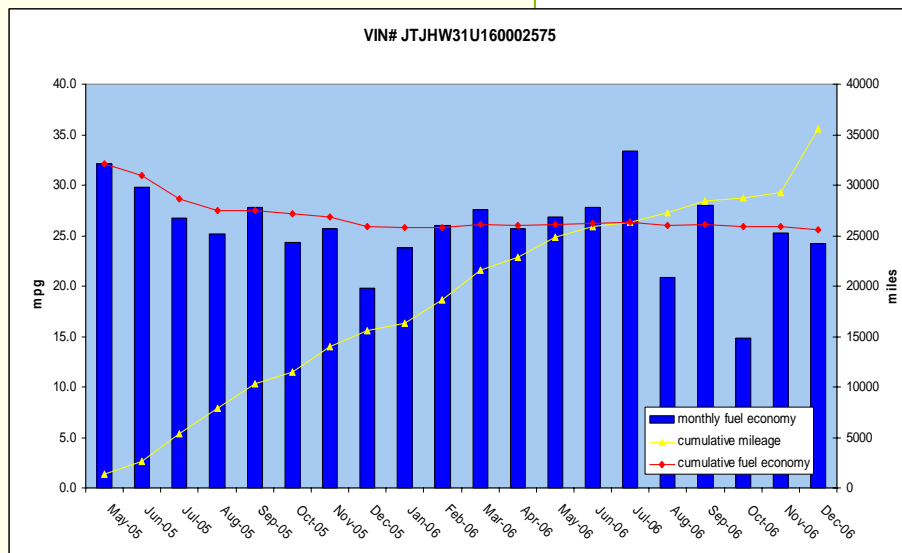
Purchase Cost: \$55,320 (5/05)\*  
Kelly Used Vehicle Price: \$36,090 (1/07)  
Sale Price: In Operation  
Maintenance Cost: \$0.008/mile  
Operating Cost: \$0.25/mile  
Total Ownership Cost: \$0.80/mile

### Operating Performance:

Total miles driven: 35,566  
Cumulative MPG: 26.1

## Vehicle Specifications

**Engine:** 3.3L V6 24 valve  
**Electric Motors:** Front - 120kW  
Rear - 50kW permanent magnet AC synchronous  
**Battery:** Nickel metal hydride  
**Seatbelt Positions:** Five  
**Payload:** 925 lbs  
**Features:** Dual electric drive, regenerative braking, CVT transmission, four wheel drive



\*Purchase includes dealer price with options plus taxes. It does not include title, license, registration, extended warranty or delivery fee costs. Gas figured at \$2.45/gallon.

For more information contact:  
EERE Information Center  
1-877-EERE-INF (1-877-337-3463)  
[www.eere.energy.gov](http://www.eere.energy.gov)

