

HEV Fleet Testing

Advanced Vehicle Testing Activities



2004 Toyota Prius

VIN#
JTDKKB20U740012721

A Strong Energy Portfolio for a Strong America

Energy efficiency and clean, renewable energy will mean a stronger economy, a cleaner environment, and greater energy independence for America. Working with a wide array of state, community, industry, and university partners, the U.S. Department of Energy's Office of Energy Efficiency and Renewable Energy invests in a diverse portfolio of energy technologies.

Fleet Performance

Description:

This vehicle is operated throughout the valley of Phoenix, Arizona by JP Morgan Chase Bank of Arizona's courier fleet. It is operated six days a week, transferring documents between branches and a central processing center on city streets and urban freeways.

Major Operations & Maintenance Events:
None

Operating Cost:

Purchase Cost: \$23,725 (10/03)*
 Kelly Used Vehicle Price: \$13,800 (1/07)
 Sale Price: In Operation
 Maintenance Cost: \$0.02/mile
 Operating Cost: \$0.10/mile
 Total Ownership Cost: \$0.20/mile

Operating Performance:

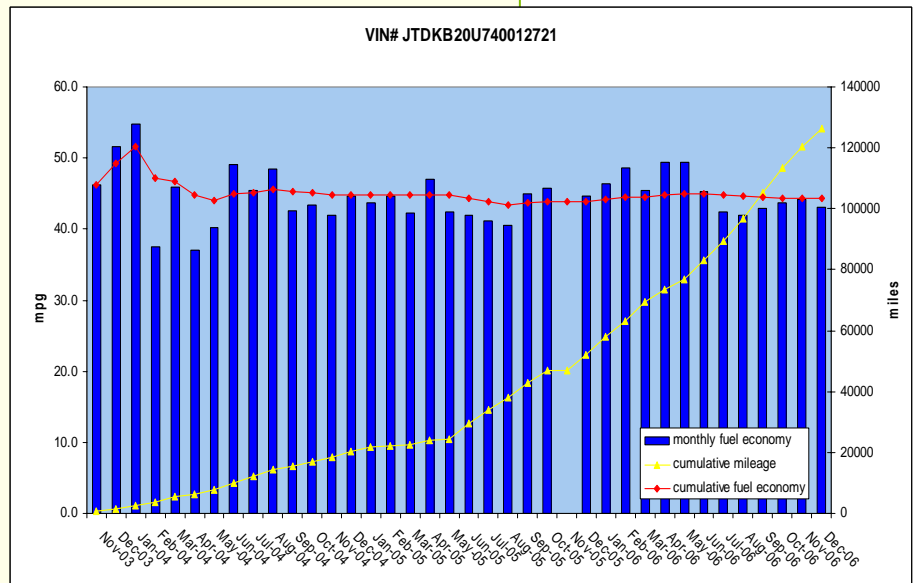
Total miles driven: 126,185
 Cumulative MPG: 44.6

* Purchase includes dealer price with options plus taxes. It does not include title, license, registration, extended warranty or delivery fee costs. Gas figured at \$2.45/gallon.

Vehicle Specifications

Engine: 4-cylinder, 57 kW @ 5000 rpm
Electric Motor: 50 kW
Battery: Nickel metal hydride
Seatbelt Positions: Five
Payload: 905 lbs
Features: Regenerative braking, CVT transmission

See HEVAmerica Baseline Performance Fact Sheet for more information.



For more information contact:
 EERE Information Center
 1-877-EERE-INF (1-877-337-3463)
www.eere.energy.gov

