



Vehicle Technologies Program

North American PHEV Demonstration

Fleet Summary Report - Hybrids Plus Escape (K2 pack)

Number of vehicles: 2

Reporting Period: Feb 09 - Jun 09

Date range of data received:

2/18/2009 to 6/30/2009

Number of days the vehicles were driven: 107

All Trips Combined

Overall gasoline fuel economy (mpg)	37
Total number of trips	2037
Total distance traveled (mi)	8543

Trips in Charge Depleting (CD) mode *

Gasoline fuel economy (mpg)	40
Number of trips	1153
Percent of trips city / highway	87.9% / 12.1%
Distance traveled (mi)	5503
Percent of total distance traveled	64.4%

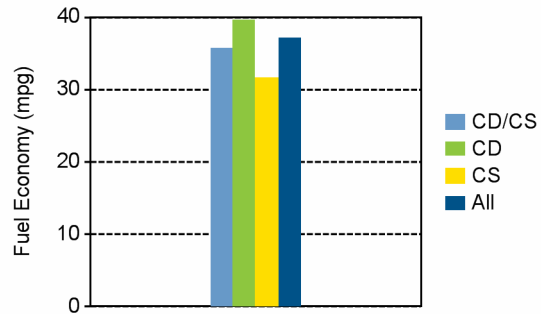
Trips in combined Charge Depleting and Charge Sustaining (CD/CS) modes**

Gasoline fuel economy (mpg)	36
Number of trips	382
Percent of trips city / highway	94.5% / 5.5%
Distance traveled (mi)	1495
Percent of total distance traveled	17.5%

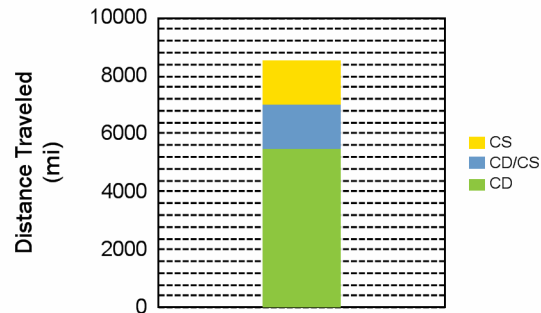
Trips in Charge Sustaining (CS) mode***

Gasoline fuel economy (mpg)	31
Number of trips	502
Percent of trips city / highway	93.4% / 6.6%
Distance traveled (mi)	1545
Percent of total distance traveled	18.1%

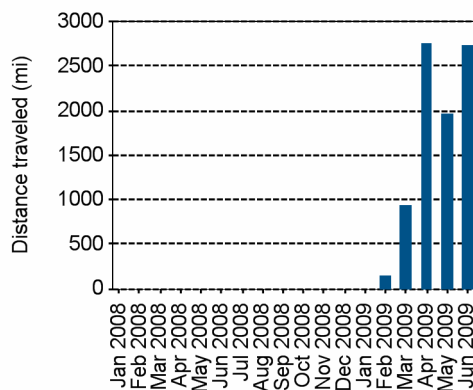
Gasoline Fuel Economy By Trip Type



Distance Traveled By Trip Type



Miles Logged by Month This Year



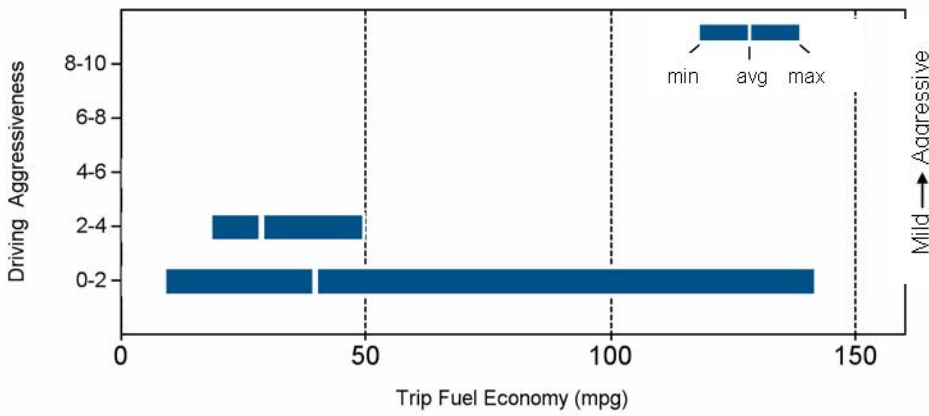
* Trips when the plug-in battery pack charge is depleted to propel the vehicle throughout entire trip

** Trips when the plug-in battery pack is depleted to propel the vehicle for a portion of the trip, but is fully depleted prior to the end of the trip

*** Trips when the plug-in battery pack is not used to propel the vehicle - either the plug-in battery is fully depleted before the beginning of the trip, or the plug-in battery pack is turned off

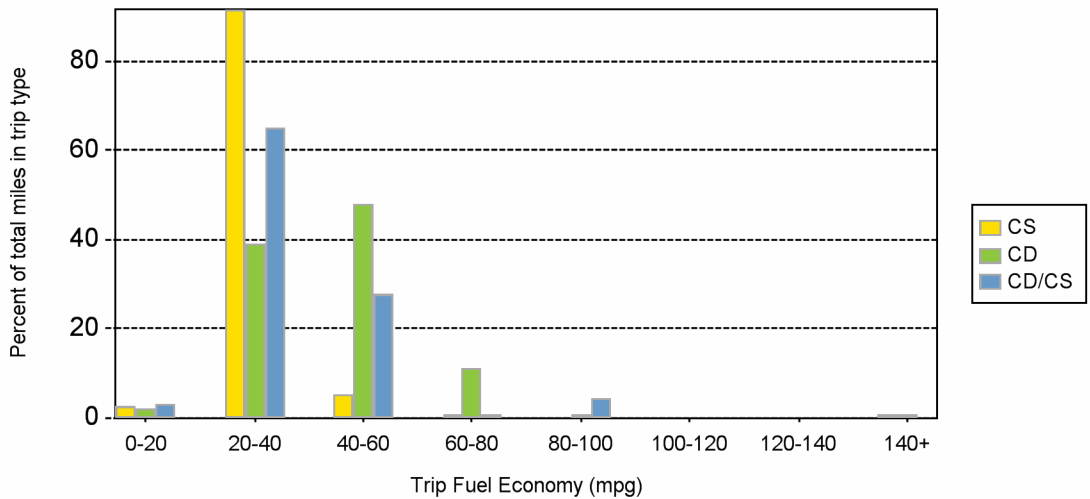
Trips in Charge Depleting (CD) mode		
	City	Highway
Gasoline fuel economy (mpg)	36	47
Percent of miles in electric-only mode	14.0%	4.0%
Average trip aggressiveness (on scale 0 - 10)	0.4	0.7
Average trip distance (mi)	3.2	16.1
Trips in combined Charge Depleting and Charge Sustaining (CD/CS) modes		
Gasoline fuel economy (mpg)	26	39
Percent of miles in electric-only mode	13.0%	1.0%
Average trip aggressiveness (on scale 0 - 10)	0.4	0.9
Average trip distance (mi)	0.6	60.2
Trips in Charge Sustaining (CS) mode		
Gasoline fuel economy (mpg)	24	33
Percent of miles in electric-only mode	14.0%	2.0%
Average trip aggressiveness (on scale 0 - 10)	0.3	1.0
Average trip distance (mi)	0.4	41.2

Effect Of Driving Aggressiveness on Fuel Economy This Year



Aggressiveness factor is based on accelerator pedal position. The more time spent during a trip at higher accelerator pedal position, the higher the trip aggressiveness.

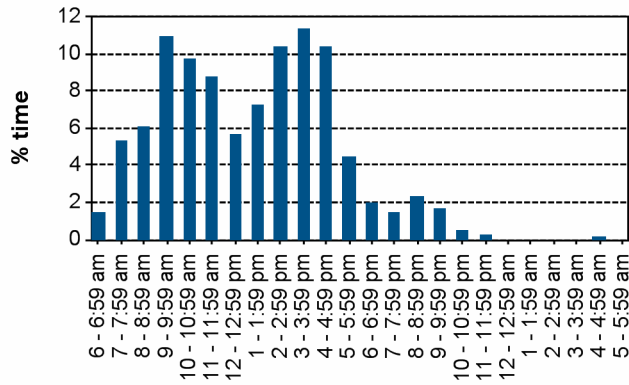
Trip Fuel Economy Distribution By Trip Type



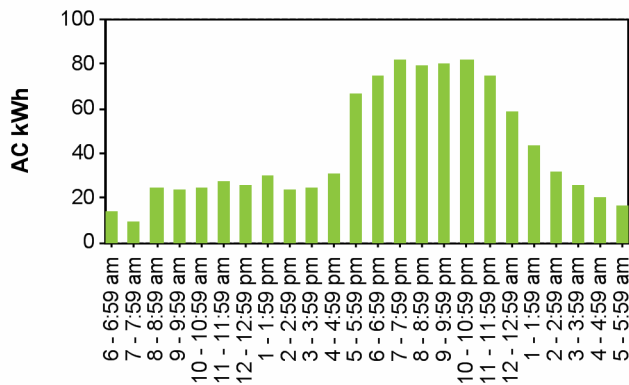
Plug-in charging

Average number of charging events per vehicle per month when driven	25
Average number of charging events per vehicle per day when vehicle driven	1.3
Average distance between charging events	42.1
Average number of trips between charging events	10.0
Average duration of charging event (hr) *	13.8
Average energy per charging event (AC kWh)	4.9
Average charging energy per vehicle per month (AC kWh)	124.4
Total number of charging events	203
Total charging energy (AC kWh)	995

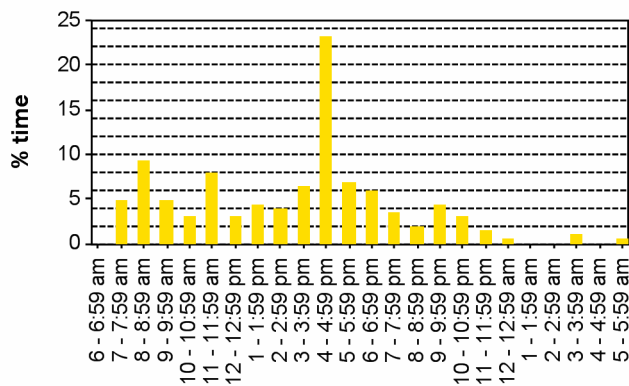
Time of Day When Driving



Time of Day When Charging



Time at the Start of Charging Events



*Average duration of charging event is the average length of time per charging event when the vehicle was plugged into the electrical grid. Electrical energy was not necessarily drawn during the entire period when the vehicle was plugged in.