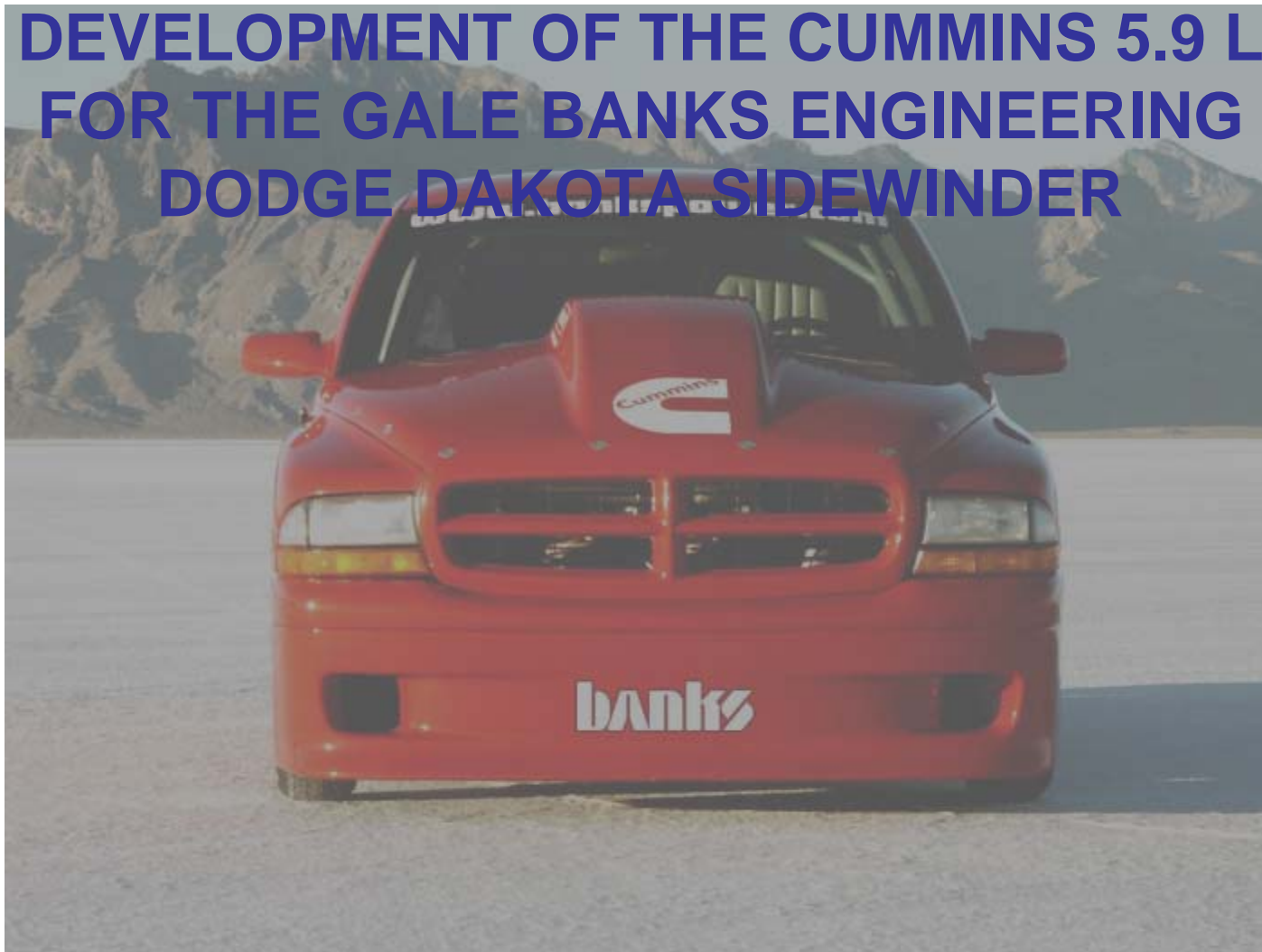




**DEVELOPMENT OF THE CUMMINS 5.9 L
FOR THE GALE BANKS ENGINEERING
DODGE DAKOTA SIDEWINDER**



2003 DEER - Newport, RI



Introduction

- Two year collaboration between Gale Banks Engineering and Cummins Inc, to showcase diesel power in a “sporting light”.

Major Contributors



Systems integration, VGT controls, Cylinder head Mods, Vehicle Engineering



Engine system performance
Engine management system



Fuel Injection Equipment



Turbocharging Equipment



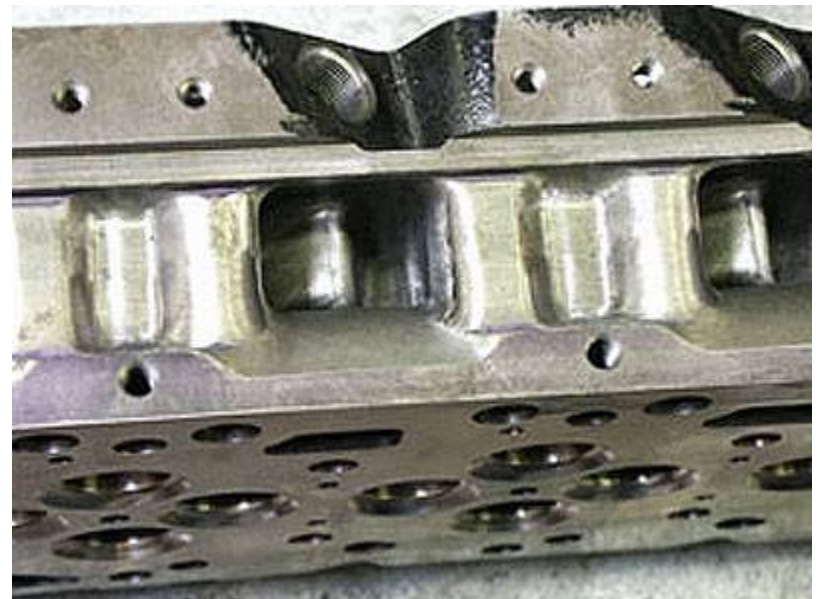
Project Goals - Power to the Fifth

- Street legal sport pickup truck with all the creature comforts of a production vehicle (air conditioning, stereo, power accessories).
- Advanced technology (HPCR and Electronically controlled VGT).
- 600+ HP and 1000+ ft-lb of torque.
- Fuel economy greater than 20 mpg.
- Capable of towing race equipment to events.
- Quiet and low visible emissions.
- Power to the fifth: *Gale Banks*
- Street legal
- Street legal + 200 mph capable
- Street legal + 200 mph capable + Land Speed Record holder
- Street legal + 200 mph capable + Land Speed Record holder + Tow Capable
- Street legal + 200 mph capable + Land Speed Record holder + Tow Capable + **DIESEL POWER**

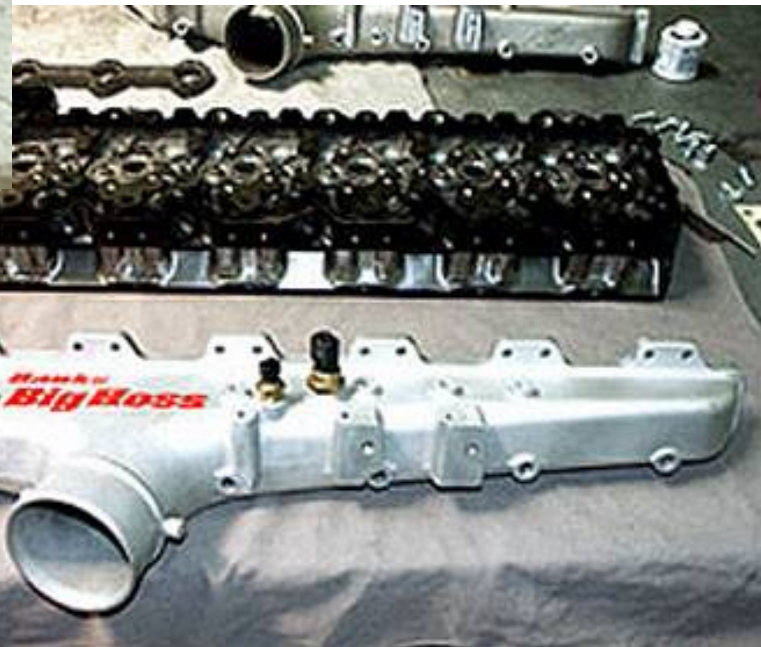


2003 DEER - Newport, RI

Engine Modifications



Engine Modifications



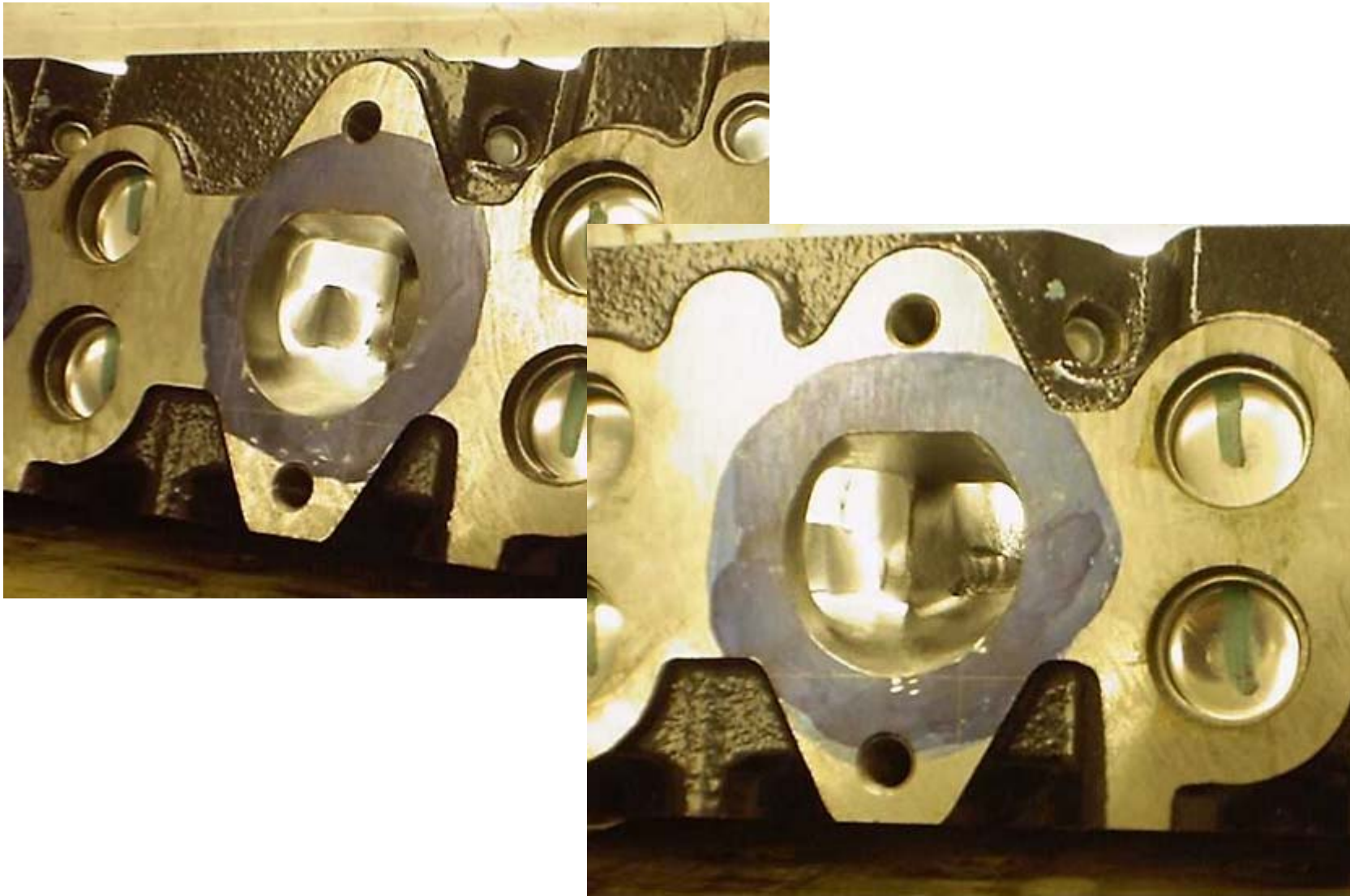
2003 DEER - Newport, RI

Engine Modifications



2003 DEER - Newport, RI

Engine Modifications



2003 DEER - Newport, RI

Engine Modifications



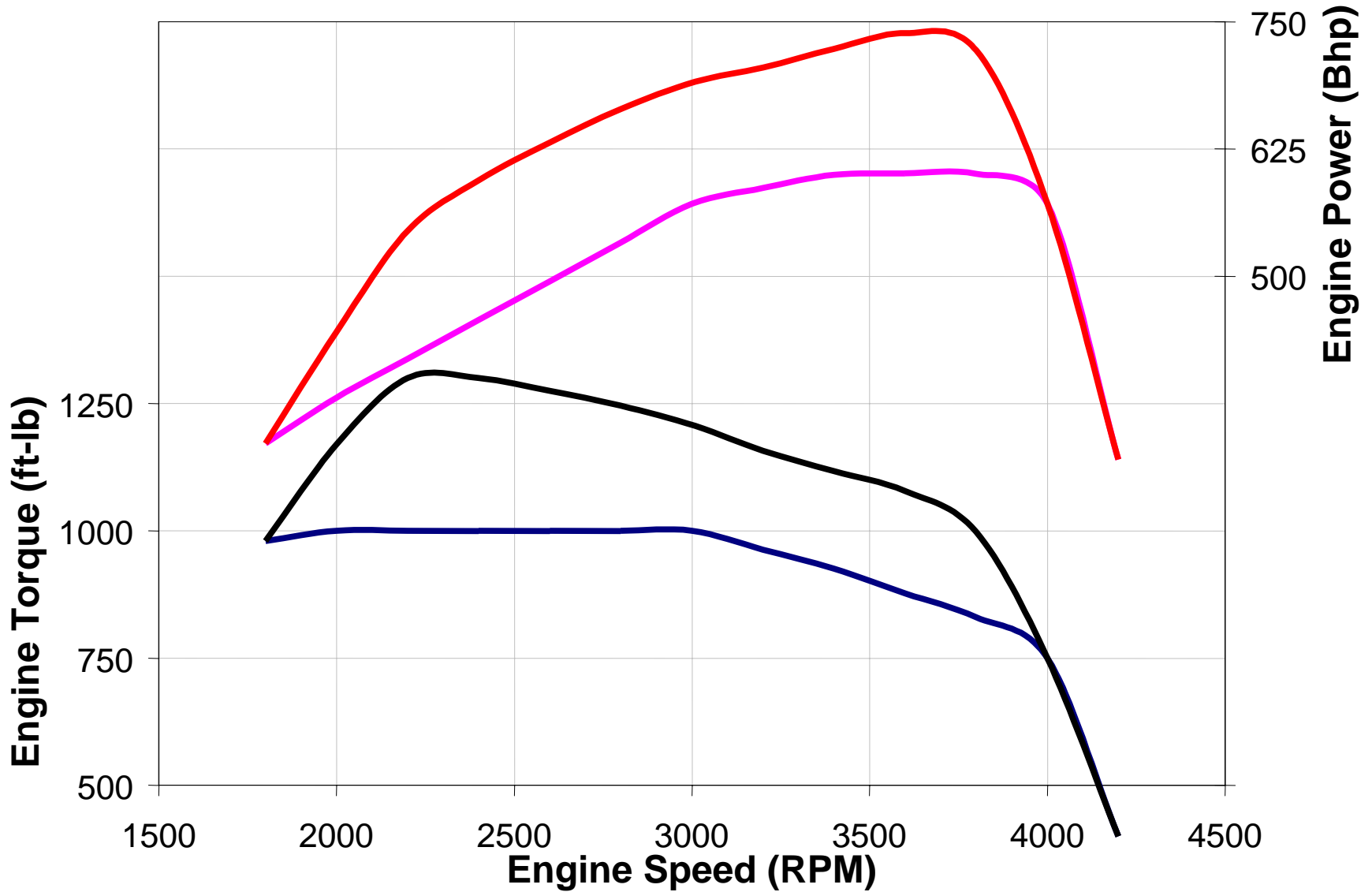
2003 DEER - Newport, RI

Engine Specifications



	Baseline DCX MY03	Sidewinder (street/race)
Rated (HP @ RPM)	305 @ 2900	600 @ 3800 / 730 @ 3800
Torque Peak (HP @ RPM)	555 @ 1400	1000 @ 1800 / 1300 @ 2200
Compression Ratio	17.2:1	15:1
Maximum Fueling (mm³/st)	120	220 / 280
Injection Nozzle flow (cc @ 100 bar/30 s)	500	600 / 750
Maximum injection pressure (bar)	1600	1800
Fuel Economy (combined – mpg)	21	21

Demonstrated Power



2003 DEER - Newport, RI

Vehicle Systems



	Street	Race
Charge air Cooling	Air – Air	Iced Water – Air
Engine Cooling	Air – Coolant, Electric Fan	Air – Coolant
Turbocharger Control	Pneumatic – Electronic, PRc feedback	Pneumatic – Electronic, PRc feedback
Final Drive	3.30 : 1	1.97 : 1
Tires	Yokohama 295 / 45 R 20	Eagle Speed 800x820x15

Vehicle Installation



2003 DEER - Newport, RI

Vehicle Class and Competition



October 2002 Entry

Banks Sidewinder:	Entry #212
BNI Class:	C/Diesel Truck (C/DT)
BNI C/DT Record:	159.647 MPH
BNI Record (any pickup):	205.208 MPH (Banks Cyclone)
FIA Class:	Category B (Production Vehicle) Group 3 (Diesel, Supercharged) Class 17 (Engine Size: 5.5–6.0L)
FIA Record:	Open

Records



	Mile (MPH)	Kilo (KPH)	Exit (MPH)
Friday, October 18: (7-mile course)			
Run 1 (limited to 175 MPH maximum)	172.617	278.517	—
Run 2 (limited to 200 MPH maximum)	192.608	309.584	—
Record Set: 4 (FIA Mile & Kilo + BNI Int'l. Mile & Kilo)	182.613	294.050	
Saturday, October 19: (7-mile course)			
Run 1	216.034	347.843	—
Run 2	218.593	350.877	—
Record Set: 4 (FIA Mile & Kilo + BNI Int'l. Mile & Kilo)	217.314	350.012	
Saturday, October 19: (5-mile course)			
Run 1 (clocks malfunctioned)	—	—	220.422
Run 2	217.212	—	222.139
Sunday, October 20: (5-mile course)			
Run 1 (pinion failure)	209.954	—	—
Record Set: 1 (SCTA/BNI Nat'l.)	213.583		

Totals: 7 runs, 9 records

2003 DEER - Newport, RI

Comparison with Ferrari Enzo



Ferrari Enzo



Banks Sidewinder

Country of origin	Italy	USA
Type	2-door, 2-pass. coupe	Two-door, two-pass. sport truck
Introduction	2002 Paris Motor show	2002 Bonneville World Finals
Engine		
Displacement	6.0 liter (366 cid)	5.9 liter (359 cid)
No. of cylinders	12	6
Fuel system	Bosch fuel injection	Bosch common rail direct injection
Induction	Naturally aspirated	Holset VGT with Banks controller
Valvetrain	4 valves/cyl, DOHC	4 valves/cyl, cam-in-block
Comp. ratio	11.2:1	15.1:1
Horsepower (Bhp)	660	735
Torque (ft-lb)	485	1300
Max RPM	8200	4000
Transmission	6-speed manual	6-speed manual
Specific output	110 hp/liter (1.8 hp/in3)	125 hp/liter (2.0 hp/in3)

2003 DEER - Newport, RI

Comparison with Ferrari Enzo



Ferrari Enzo



Banks Sidewinder

Performance

Top speed 217.5 mph (estimated)

222.139 mph (measured)

Fuel economy 8-12 MPG

21.2 MPG

Standard Equipment

Air conditioning Yes

Yes

Stereo No

Yes

Trailer hitch No

Yes

Automatic trans. No

Optional

Available colors Red, yellow

Red

Pricing and Availability

Price \$650,000

Priceless

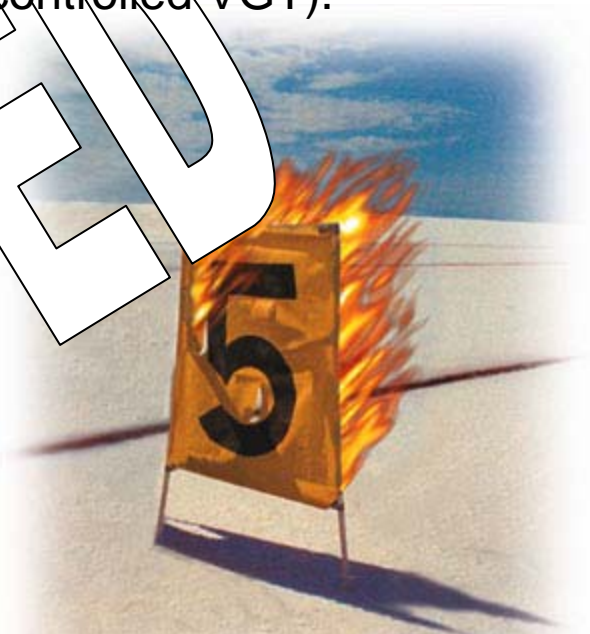
Availability Sold out

Sold out



Project Goals - Power to the Fifth

- Street legal sport pickup truck with all the creature comforts of a production vehicle (air conditioning, stereo, power accessories).
- Advanced technology (HPCR and Electronically controlled VGT).
- 600+ HP and 1000+ ft-lb of torque.
- Fuel economy greater than 20 mpg.
- Capable of towing race equipment to events.
- Quiet and low visible emissions.
- Power to the fifth: *Gale Banks*
- Street legal
- Street legal + 200 mph capable
- Street legal + 200 mph capable + Land Speed Record holder
- Street legal + 200 mph capable + Land Speed Record holder + Tow Capable
- Street legal + 200 mph capable + Land Speed Record holder + Tow Capable + **DIESEL POWER**



2003 DEER - Newport, RI

PM Emissions



2003 DEER - Newport, RI

PM Emissions



2003 DEER - Newport, RI

Thanks



Cummins:

**Rob Smith, Lyle Kocher, Ken King, Matt Meek, Will Harvey
Greg Franks, Jason Mackey, and John Stang**

Gale Banks Engineering

**Gale Banks, John Espino, Sheldon Tackett, and
Andy Johnston**