
AIR SEALING GUIDE

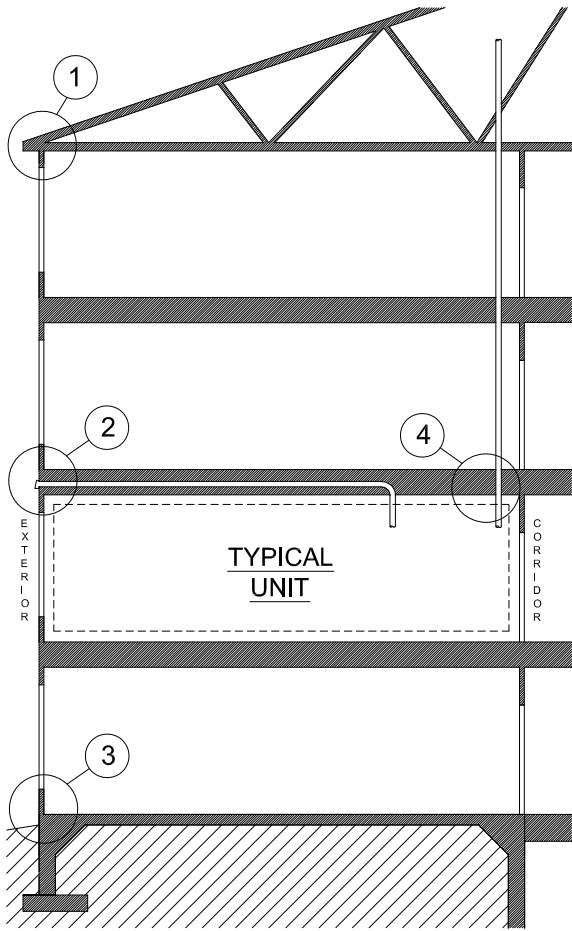
MULTIFAMILY CONSTRUCTION

Steven Winter Associates, Inc. www.swinter.com

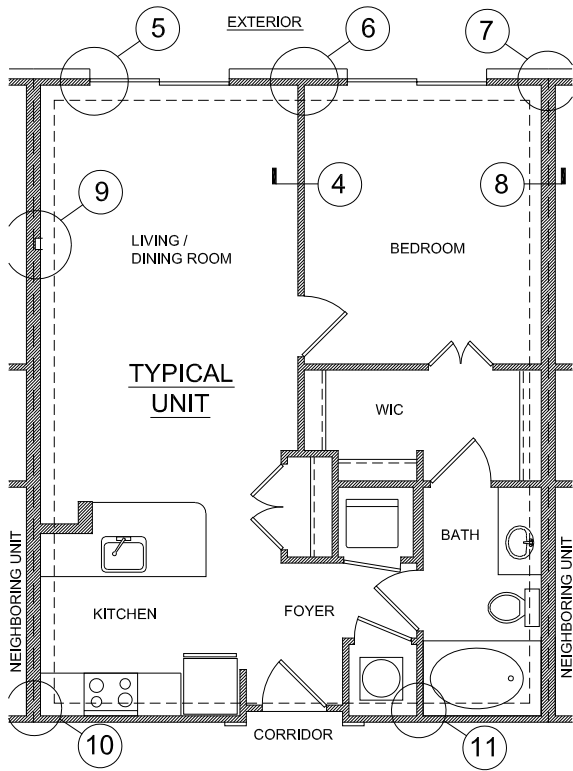
50 Washington Street, Norwalk, Connecticut 06854
307 7th Avenue, Suite 1701, New York, NY 10001
1112 16th Street NW, Suite 240, Washington, D.C. 20036

tel 203-857-0200 fax 203-852-0741
tel 212-564-5800 fax 212-741-8673
tel 202-628-6100 fax 202-393-5043

Steven Winter Associates, Inc. makes no representations about the suitability of this document for all situations. The accuracy and completeness of the information provided by the author and the opinions stated herein are not guaranteed or warranted to produce any particular results and the advice and strategies contained herein may not be suitable for all applications. This document is provided "as is" without express or implied warranty. Steven Winter Associates, Inc. shall not be liable in any event for incidental or consequential damages in connection with, or arising out of, the furnishing, performance, or use of this documentation. The information presented in this article is for use with care by professionals.

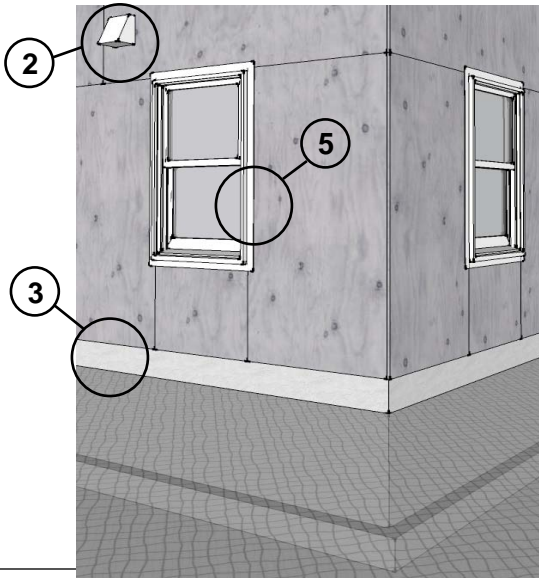


SECTION KEY
TYPICAL MULTIFAMILY BUILDING

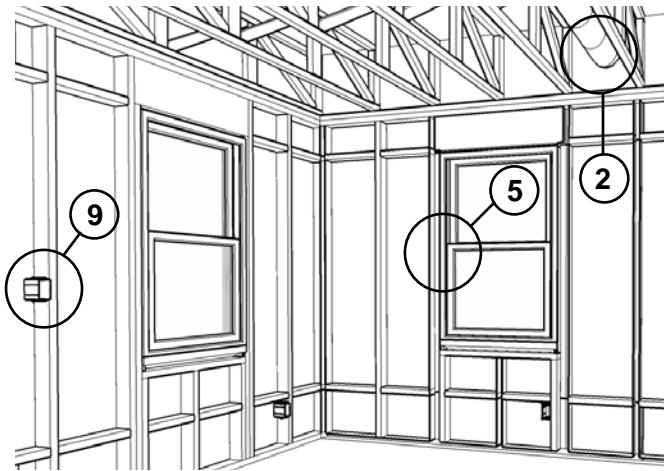


PLAN KEY
TYPICAL UNIT PLAN

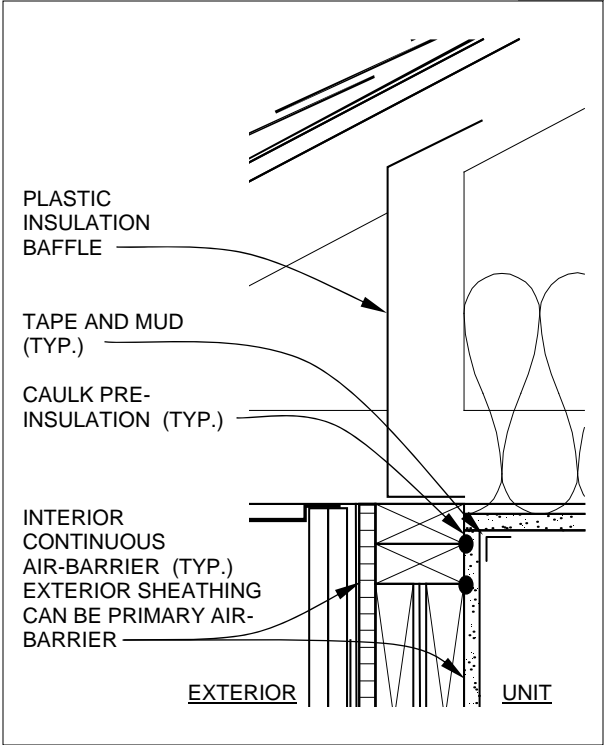
ELEVATION KEY
TYPICAL WOOD FRAME BUILDING



INTERIOR FRAMING KEY
TYPICAL WOOD FRAME BUILDING

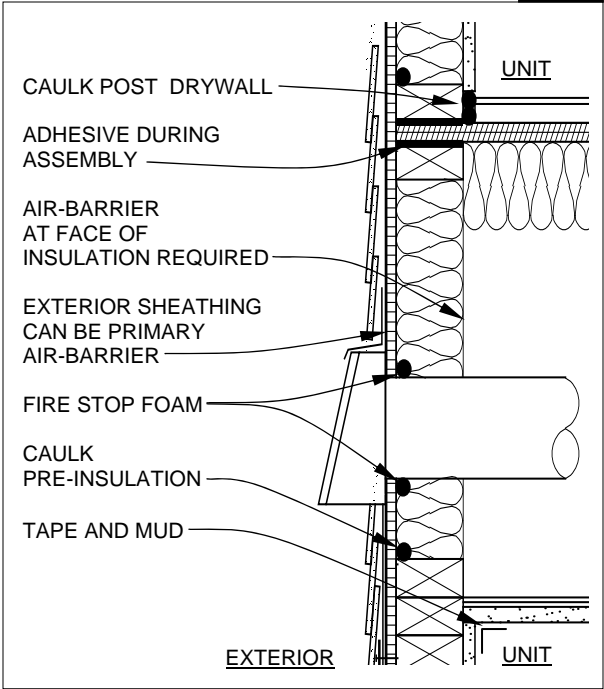


1 SOFFIT DETAIL



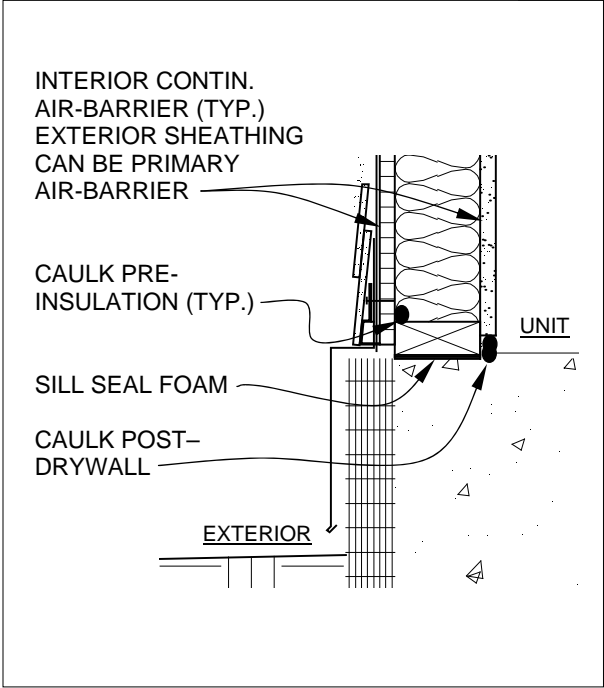
Comments:

2 VENT PENETRATION AND FLOOR TRUSS CONDITION



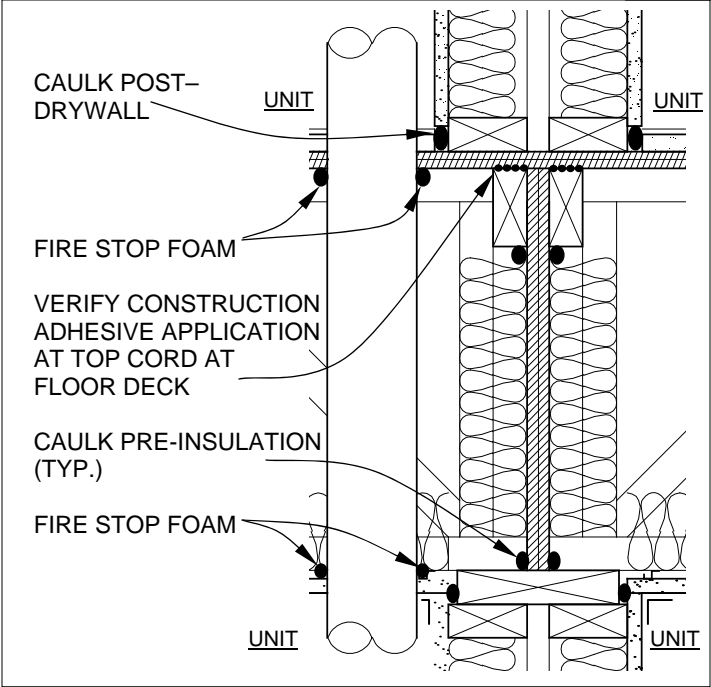
Comments:

3 FRAMING WALL TO SLAB DETAIL



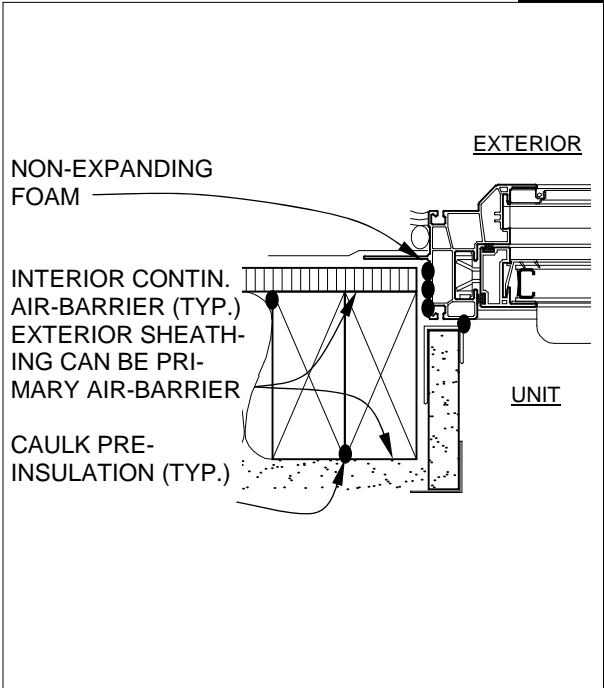
Comments:

4 VERTICAL PIPE AND TENANT SEPARATION WALL DETAIL



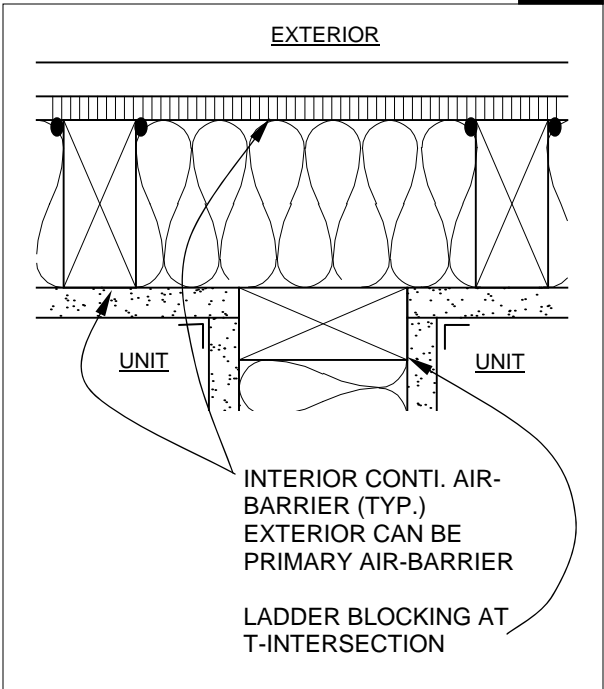
Comments:

5 WINDOW JAMB DETAIL
(HEAD AND SILL SIMILAR)



Comments:

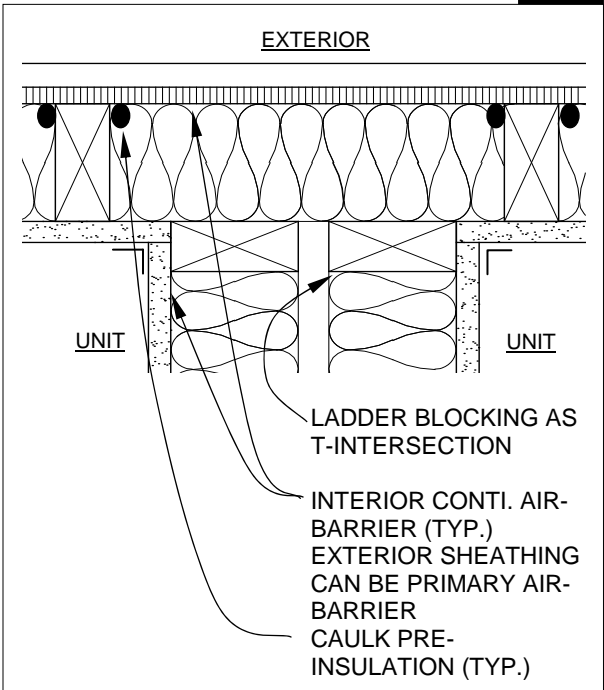
6 PARTITION WALL DETAIL



Comments:

7

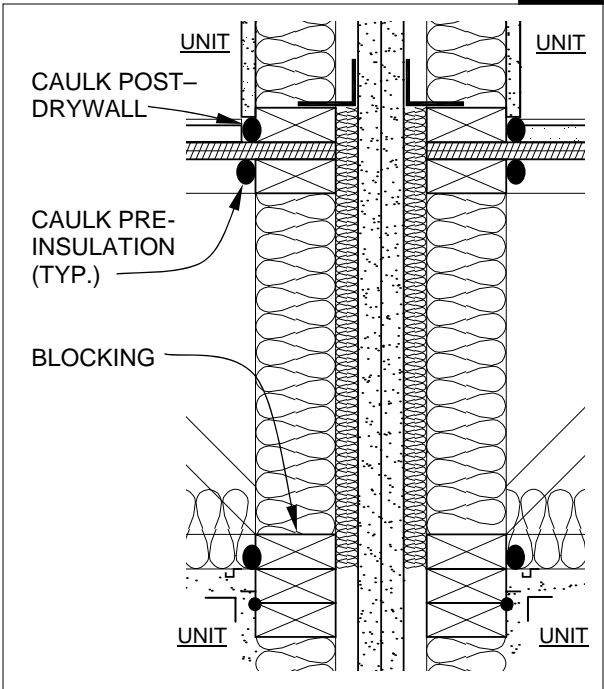
TENANT SEPARATION WALL DETAIL



Comments:

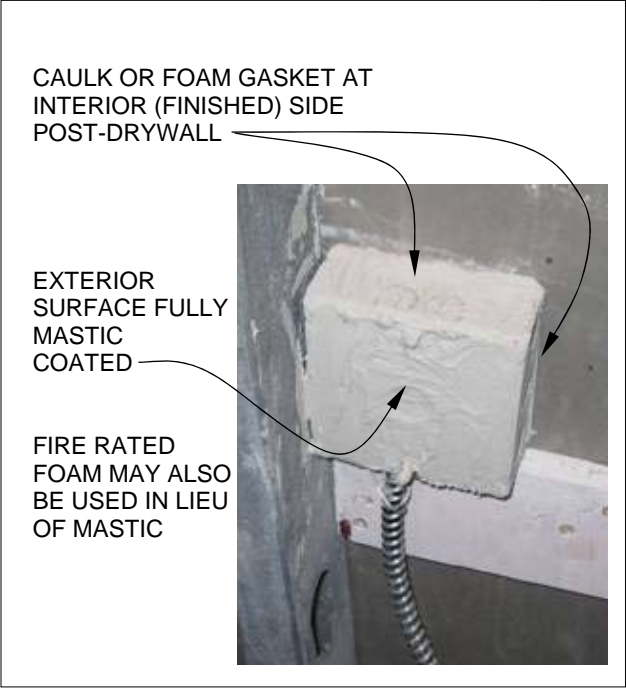
8

2-hr SEPARATION WALL DETAIL



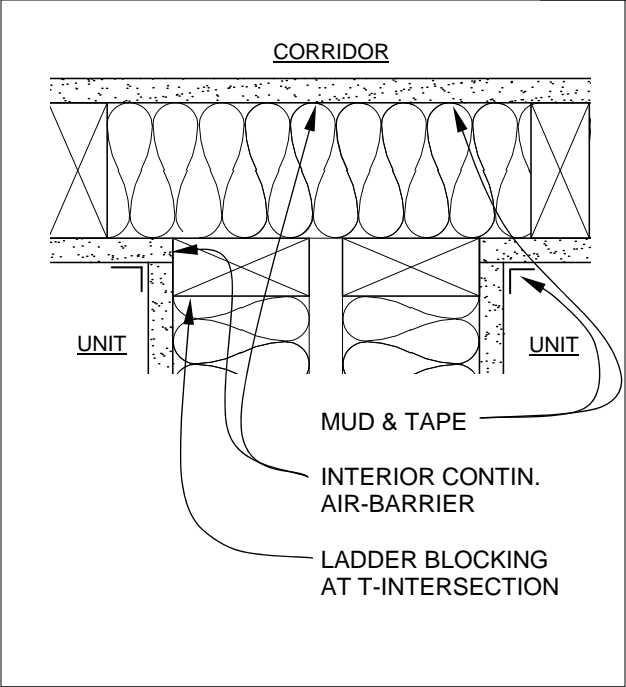
Comments:

9 TYPICAL RECESSED ELECTRICAL BOX (WALL AND CEILING SIMILAR)



Comments:

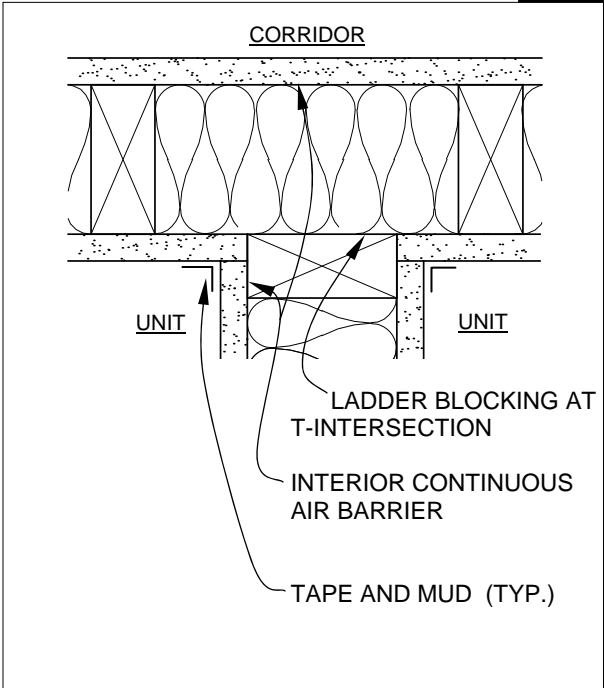
10 TENANT SEPARATION AND CORRIDOR WALL DETAIL



Comments:

11

PARTITION AND CORRIDOR WALL DETAIL



Comments: