

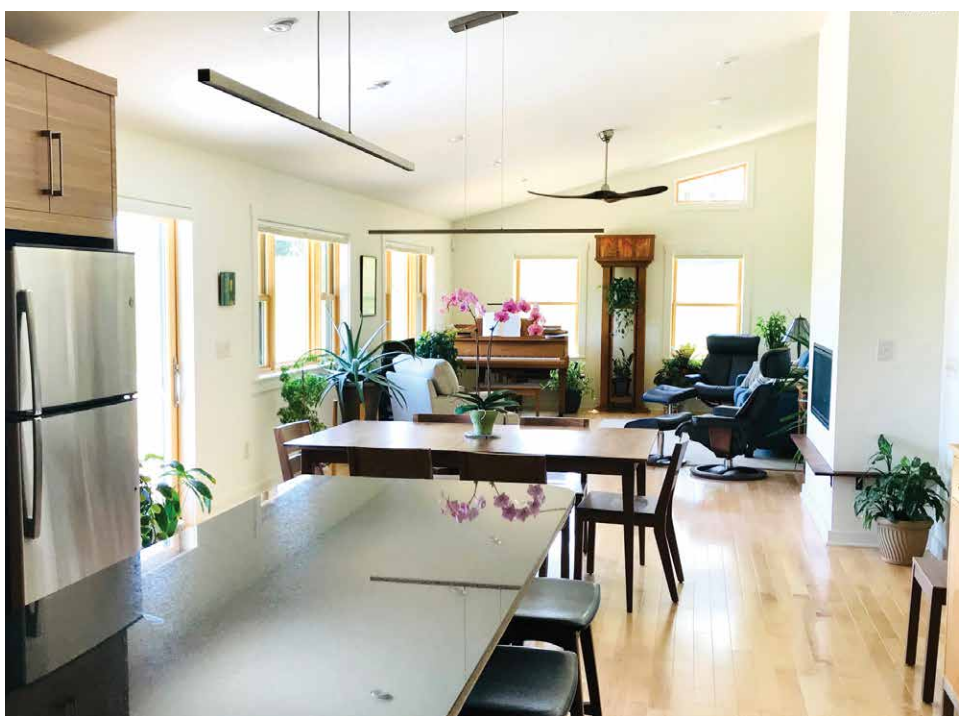


Deltec Homes

Bluegate Horizon | Mills River, NC | DeltecHomes.com



"We have absolutely loved this home...just walking through the house every day is a joy." A Deltec home owner



PROJECT DATA

- **Layout:** 3 bdrm, 2 bath, 1 fl, 1,759 ft²
- **Climate:** IECC 4A, mixed-humid
- **Completed:** February 2019
- **Category:** custom for buyer

MODELED PERFORMANCE DATA

- **HERS Index:** without PV 45; with PV 0
- **Annual Energy Costs:** without PV \$1,000; with PV \$190
- **Annual Energy Cost Savings:** (vs typical new homes) without PV \$900; with PV \$1,750
- **Annual Energy Savings:** without PV 9,200 kWh; with PV 17,450 kWh
- **Savings in the First 30 Years:** \$74,500

CONTACT

Leigha Dickens
828-253-0483
ldickens@deltechomes.com

KEY FEATURES

- **Walls:** 2x6 24" o.c. advanced framing, R-24 total: 5/8" drywall, 5.5" unfaced fiberglass batt, 5/8" plywood sheathing, 1" R-5 XPS, rigid foam, draining house wrap, fiber cement lap siding; wall panels built in factory powered by renewable energy.
- **Roof:** Vaulted asymmetrical roof with clerestory windows, 5/8" drywall, open web trusses at 24" o.c., 5/8" plywood sheathing, polyolefin underlayment, ENERGY STAR Cool Roof.
- **Attic:** Unvented, vaulted ceilings; 8" R-30 open-cell spray foam under roof decking.
- **Foundation:** Slab on grade; 2" R-10 XPS at slab edge; termite inspection gap.
- **Windows:** Double-pane, argon-filled, low-e3, fiberglass double-hung, U=0.27, SHGC=0.21.
- **Air Sealing:** 1.44 ACH 50.
- **Ventilation:** Independently ducted HRV, also exhausts guest bath.
- **HVAC:** Combination ducted ductless mini-split heat pump, 10.7 HSPF, 17.45 SEER, 2 indoor air handlers; electric baseboard back-up. MERV 8 filters at return grills in bedrooms.
- **Hot Water:** Heat pump water heater, 3.69 EF, 50-gal.; push button recirculation pump.
- **Lighting:** 100% LED, daylighting.
- **Appliances:** ENERGY STAR refrigerator, dishwasher, clothes washer, and ceiling fans.
- **Solar:** 6.5-kW PV system.
- **Water Conservation:** EPA WaterSense fixtures and toilets; two 50-gal. rain barrels.
- **Energy Management System:** Wi-Fi-enabled thermostat remotely controls mini-splits, heat pump water heater, dishwasher, and range; PV monitoring system.
- **Other:** No-step entries, 3-ft doors. Zero-VOC interior paints and primers, Green Seal-labeled carpet, KCMA-certified cabinetry, Green Guard-labeled flooring.



Energy Efficiency &
Renewable Energy



For more information on the **DOE Zero Energy Ready Home** program, go to <http://energy.gov/eere/buildings/zero-energy-ready-home> or scan the QR code.



PNNL-SA-147410 September 2019