

LED TOUR

DOE SSL R&D Workshop—Guided Bus Tour

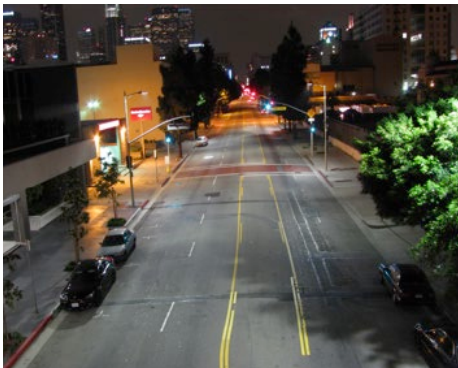
Los Angeles, CA • January 29, 2013

The city of Los Angeles has the largest LED street lighting retrofit project in the U.S., if not the world, with more than 110,000 luminaires replaced to date. Guided by Senior Street Lighting Engineer Orlando E. Nova, the tour will visit selected outdoor installations, learn about the city's aggressive efforts to integrate remote monitoring systems and adaptive lighting and controls, and stop at the street lighting field operations yard and museum. (Registration required; \$20 transportation fee. Check at registration for seat availability.)



A Long Beach Hilton
701 West Ocean Blvd.
7:00 p.m.
Meet in the hotel lobby at 6:45. Bus will depart promptly at 7:00.

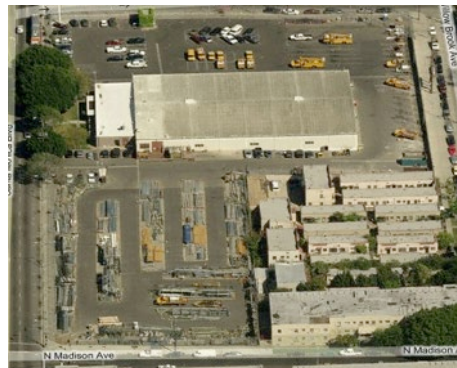
B Hill Street
Between 11th and 12th Streets • 7:30 p.m.



The first stop, near the Los Angeles Bureau of Street Lighting offices, will feature a remote dimming demonstration of Leotek 120 LED Generation C lighting with Dimming Control Modules (DCM) installed. Hill Street is a major, 60'-wide city street with luminaires

staggered with an average spacing of 160'. The luminaires are mounted at 31' with 4' arms. These units can be dimmed from 277 to 30 watts by remote control using the city's ROAM monitoring system.

C Bureau of Street Lighting Field Operations Yard
4550 Santa Monica Blvd. • 8:00 p.m.



The second stop is the Los Angeles Bureau of Street Lighting's field operations yard and street lighting museum. The yard is LA's base for its fleet of 60 trucks and 120 employees, with two long-term LED test installations. One site compares a Beta LED 40 with a Leotek

40 luminaire 24/7, the other compares a Beta 60 Gen D with an induction luminaire from dusk until dawn. The Field Operations Division is responsible for 210,000 street lights in Los Angeles; to date, more than half have been converted from HID to LED. In addition, the museum features about 275 fixtures from the City of Los Angeles's 145-year history of lighting its streets, including a 1915 overhead electric lamp and modern equipment.